



SERVICE PARTS LIST

BULLETIN NO.
54-42-5510

SPECIFY CATALOG NO. AND SERIAL NO. WHEN ORDERING PARTS		REVISED BULLETIN 54-42-5509	DATE Dec. '93
POSITIVE CLUTCH REV. SCREWDRIVER			
CATALOG NO. 6798-1	STARTING SERIAL NO. 450B	WIRING INSTRUCTION 58-01-0023	

EXAMPLE:



Component Parts (Small #)
Are Included When Ordering
The Assembly (Large #).

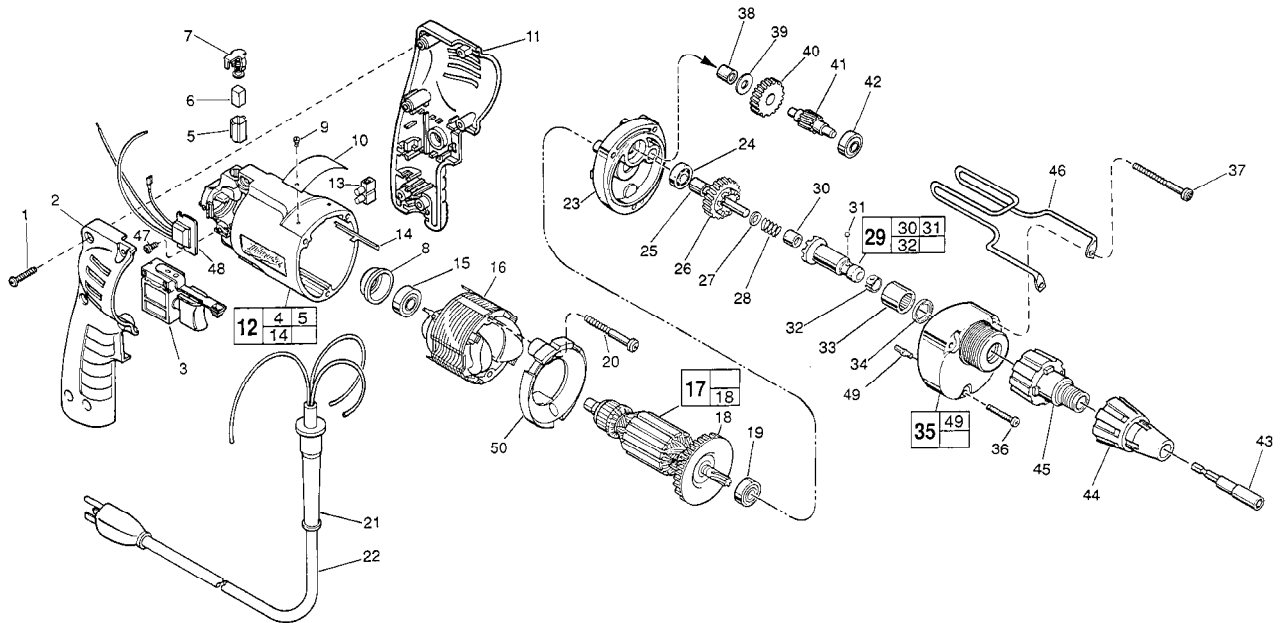


FIG. PART NO.	DESCRIPTION OF PART	NO. REQ.
1	06-82-7284	8-16 x 3/4" Pan Hd. Slit. Plast. T-20 (6)
2	31-44-1745	Right Handle Half (1)
3	23-66-2145	Speed Control Switch (1)
4	23-94-6225	Ground Wire Assembly (Not Shown) (1)
5	22-20-0830	Brush Tube (2)
6	22-16-0275	Carbon Brush (2)
7	23-52-1560	Brush Spring Assembly (2)
8	22-72-0100	Bearing Cup (1)
9	06-85-0200	Nameplate Screw (2)
10	12-99-0850	Service Nameplate (1)
11	31-44-1740	Left Handle Half (1)
12	14-38-0600	Motor Housing Assembly (1)
13	22-56-0456	Terminal Block (1)
14	44-60-0530	Ground Pin (1)
15	02-04-0645	Ball Bearing (1)
16	18-11-0150	120 Volt Field (1)
★ 17	16-10-0690	120 Volt Armature (1)
★ 18	22-84-0880	Fan Assembly (1)
19	02-04-0848	Ball Bearing (1)
★ 20	06-82-7203	7-18 x 2-1/8" Pan Hd. Slit. Plast. T-20 (2)
21	44-76-0210	Cord Protector (1)
22	22-64-1120	Cord Set (1)
23	28-28-1960	Diaphragm (1)
24	02-04-0645	Ball Bearing (1)
25	45-36-1280	Spacer (1)
26	32-10-4045	Clutch Gear Assembly (1)
27	45-88-0712	Thrust Washer (1)
28	40-50-6600	Separator Spring (1)
29	42-66-0766	Clutch Chuck Assembly (1)
30	02-50-2400	Needle Bearing (1)
31	02-02-0130	Steel Ball (1)
32	40-50-0510	Bit Retaining Spring (1)
33	02-50-4220	Needle Roller Bearing (1)
34	45-06-0106	Oil Seal (1)

FIG. PART NO.	DESCRIPTION OF PART	NO. REQ.
35	14-30-0600	Gear Case Assembly (1)
36	06-82-7344	7-18 x 1-1/2" Pan Hd. Slit. Plast. T-20 (1)
37	06-82-7464	7-18 x 2-3/4" Pan Hd. Slit. Plast. T-20 (2)
38	02-50-2410	Needle Bearing (1)
39	45-88-7990	Thrust Washer (1)
40	32-40-1612	Intermediate Gear (1)
41	36-66-4101	Intermediate Pinion Shaft (1)
42	02-04-0640	Ball Bearing (1)
43	49-66-3016	5/16" Hex Socket (1)
44	49-26-0250	Locator 1/4" Hex Socket (1)
	49-26-0312	Locator 5/16" Hex Socket (1)
	49-26-0375	Locator 3/8" Hex Socket (1)
45	48-32-2500	Bit Housing (1)
46	42-70-5080	Belt Clip (1)
47	06-82-7212	4-20 x 1/4" Pan Hd. Slit. Plast. T-10 (1)
48	14-20-0650	Remote Electronic Assembly (1)
49	06-65-0825	1/8 x 1/2 Groove Pin 5 (1)
★ 50	42-14-0380	Baffle (1)

FIG. LUBRICATION

35 1-1/2 Oz. Type "E" Grease, No. 49-08-4122.
Place Near Intermediate Shaft Ball Bearing In Gear Case.

FIG. NOTES

- 1 Torque to 18-22 In./Lbs.
- 20,36,37 Torque to 15-20 In./Lbs.
- 47 Torque to 3-5 In./Lbs.
- 8 Place in motor housing before inserting armature.
- 30,33 Press only on end with manufacturer ID.
- 33,38 Press flush to casting surface.
- 34 Lip towards front of gear case.
- 15,19,24 Seal towards armature.
- 30 Press 11/64" from clutch face.