



# SERVICE PARTS LIST

**BULLETIN NO.  
55-42-5508**

SPECIFY CATALOG NO. AND SERIAL NO. WHEN ORDERING PARTS		REVISED BULLETIN	DATE
<b>POSITIVE CLUTCH REV. SCREWDRIVER</b>		55-42-5507	Oct. '93
CATALOG NO. <b>6798-3</b>	STARTING SERIAL NO. <b>450A</b>	WIRING INSTRUCTION <b>58-03-0023</b>	

**EXAMPLE:**  
Component Parts ( Small #)  
Are Included When Ordering  
The Assembly (Large #).

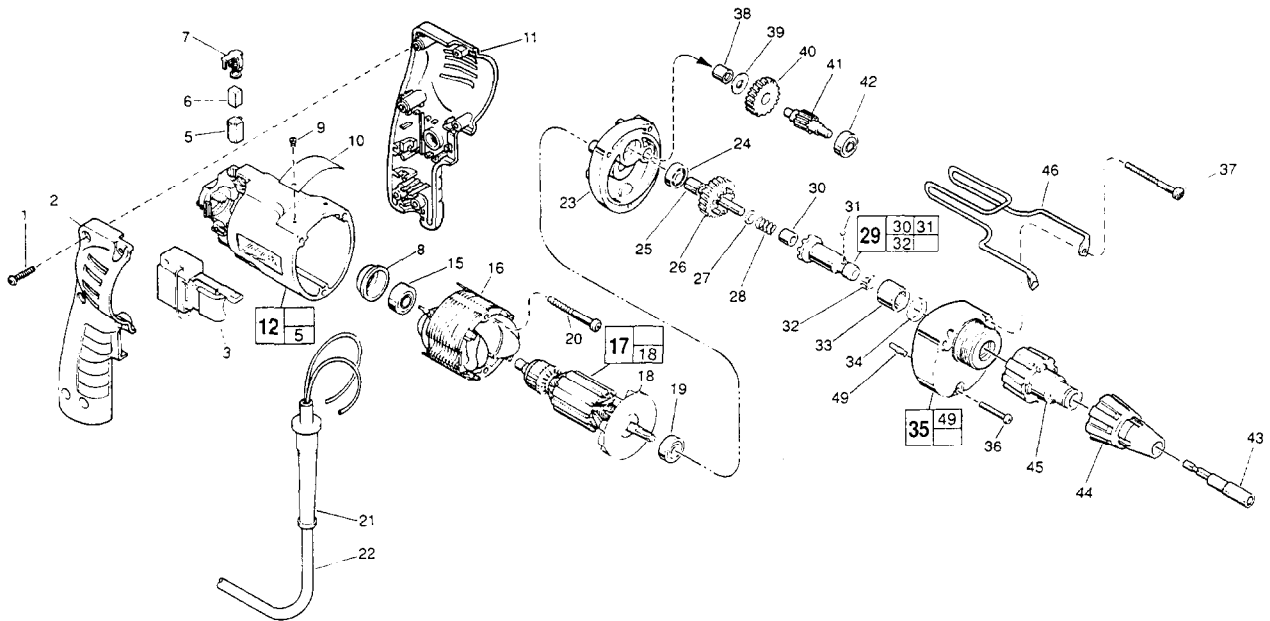


FIG. PART NO.	DESCRIPTION	NO. REQ.	FIG. PART NO.	DESCRIPTION	NO. REQ.
★ 1 06-82-7284	8-16 x 3/4" Pan Hd. Sit. Plast. T-20	(6)	35 14-30-0600	Gear Case Assembly	(1)
★ 2 31-44-1745	Right Handle Half	(1)	36 06-82-7344	7-18 x 1-1/2" Pan Hd. Sit. Plast. T-20	(1)
★ 3 23-66-2075	Speed Control Switch	(1)	★ 37 06-82-7464	7-18 x 2-3/4" Pan Hd. Sit. Plast. T-20	(2)
★ 5 22-20-0830	Brush Tube	(2)	38 02-50-2410	Needle Bearing	(1)
6 22-16-0375	Carbon Brush	(2)	39 45-88-7990	Thrust Washer	(1)
★ 7 23-52-1570	Brush Spring Assembly	(2)	40 32-40-1612	Intermediate Gear	(1)
★ 8 22-72-0100	Bearing Cup	(1)	41 36-66-4101	Intermediate Pinion Shaft	(1)
9 06-85-0200	Nameplate Screw	(2)	42 02-04-0640	Ball Bearing	(1)
10 12-99-0570	Service Nameplate	(1)	43 49-66-3016	5/16" Hex Socket	(1)
★ 11 31-44-1740	Left Handle Half	(1)	44 49-26-0250	Locator 1/4" Hex Socket	(1)
★ 12 14-38-0590	Motor Housing Assembly	(1)	49-26-0312	Locator 5/16" Hex Socket	(1)
15 02-04-0645	Ball Bearing	(1)	49-26-0375	Locator 3/8" Hex Socket	(1)
★ 16 18-12-0150	Field	(1)	45 48-32-2500	Bit Housing	(1)
★ 17 16-14-0592	Armature	(1)	★ 46 42-70-5080	Belt Clip	(1)
18 22-84-0830	Fan Assembly	(1)	49 06-65-0825	1/8 x 1/2 Groove Pin 5	(1)
19 02-04-0848	Ball Bearing	(1)			
20 06-82-7393	7-18 x 2" Pan Hd. Sit. Plast. T-20	(2)			
21 44-76-0210	Cord Protector	(1)			
22 22-64-4480	Cord Set	(1)			
★ 23 28-28-1960	Diaphragm	(1)			
24 02-04-0645	Ball Bearing	(1)			
25 45-36-1280	Spacer	(1)			
26 32-10-4045	Clutch Gear Assembly	(1)			
27 45-88-0712	Thrust Washer	(1)			
28 40-50-6600	Separator Spring	(1)			
29 42-66-0766	Clutch Chuck Assembly	(1)			
30 02-50-2400	Needle Bearing	(1)			
31 02-02-0130	Steel Ball	(1)			
32 40-50-0510	Bit Retaining Spring	(1)			
33 02-50-4220	Needle Roller Bearing	(1)			
34 45-06-0106	Oil Seal	(1)			

**FIG. LUBRICATION**  
35 1-1/2 Oz. Type "E" Grease, No. 49-08-4122.  
Place Near Intermediate Shaft Ball Bearing In Gear Case.

**FIG. NOTES**  
1 Torque to 18-22 In./Lbs.  
20,36,37 Torque to 15-20 In./Lbs.  
8 Place in motor housing before inserting armature.  
30,33 Press only on end with manufacturer ID.  
33,38 Press flush to casting surface.  
34 Lip towards front of gear case.  
15,19,24 Seal towards armature.  
30 Press 11/64" from clutch face.