



# SERVICE PARTS LIST

BULLETIN NO.  
55-27-0640

SPECIFY CATALOG NO. AND SERIAL NO. WHEN ORDERING PARTS		REVISED BULLETIN	DATE
16 GAUGE NIBBLER			May '91
CATALOG NO. 6890-2	STARTING SERIAL NO. 734-1001	WIRING INSTRUCTION 58-01-0306	

EXAMPLE:  
Component Parts ( Small #)  
Are Included When Ordering  
The Assembly (Large #).

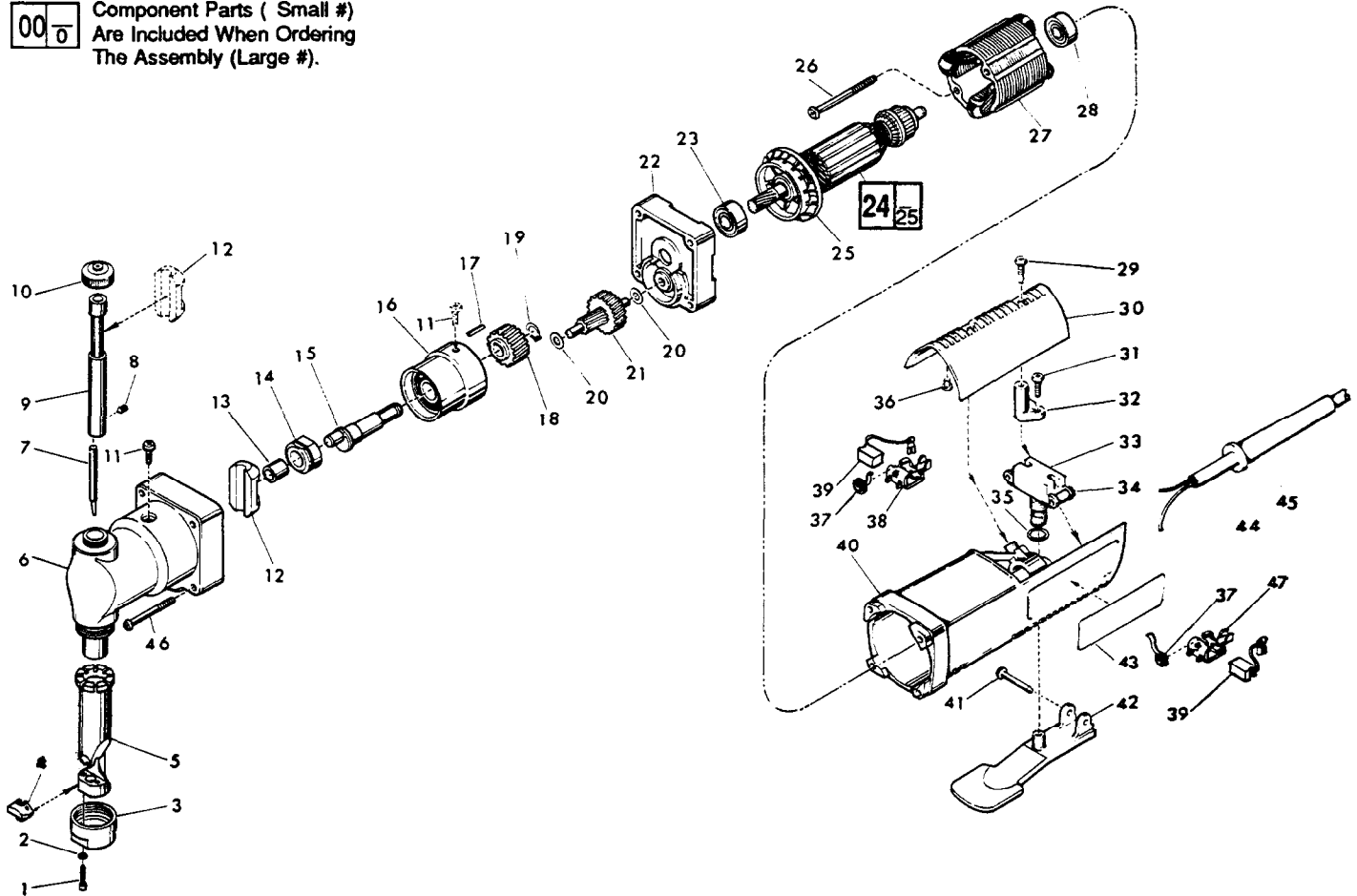


FIG. PART NO.	DESCRIPTION OF PART	NO. REQ.
1 05-74-0300	Socket Head Cap Screw	(2)
2 05-90-0003	Lockwasher	(2)
3 44-86-0450	Retainer	(1)
4 48-44-0270	Die	(1)
5 43-72-0150	Die Holder	(1)
6 28-14-1860	Gear Case	(1)
7 48-44-0260	Punch	(1)
8 05-86-0508	Socket Set Screw	(1)
9 44-62-0170	Piston	(1)
10 42-52-0310	Metal Cap	(1)
11 05-81-0720	Screw	(1)
12 42-50-0190	Cam Guide	(1)
13 02-50-2460	Needle Bearing	(1)
14 42-50-0200	Cam Holder	(1)
15 43-16-0190	Eccentric	(1)
16 43-72-0140	Bearing Holder - Complete	(1)
17 43-96-0140	Square Key	(1)
18 32-30-0050	Drive Gear	(1)
19 34-60-2355	External Snap Ring	(1)
20 45-88-7925	Thrust Washer	(2)
21 32-40-1960	Intermediate Gear & Shaft Assembly	(1)
22 28-28-1790	Diaphragm With Bushing	(1)
23 02-04-0847	Ball Bearing	(1)
24 16-06-0036	240 Volt Armature	(1)
25 22-84-0680	Fan	(1)
26 06-82-7410	8-16 x 1-7/8" Torx Plastite Screw	(2)
27 18-06-0035	240 Volt Field	(1)
28 02-04-0850	Ball Bearing	(1)
29 06-82-7270	8-16 x 5/8" Torx Plastite Screw	(2)

FIG. PART NO.	DESCRIPTION OF PART	NO. REQ.
30 31-15-0140	Cover	(1)
31 06-82-7270	8-16 x 5/8" Torx Plastite Screw	(2)
32 31-17-0120	Cord Clamp	(1)
33 23-66-1170	Switch	(1)
34 06-95-0125	Switch Terminal Screw	(2)
35 34-40-4015	O-Ring	(1)
36 42-38-0181	Rubber Bumper	(2)
37 23-52-0240	Brush Spring	(2)
38 22-20-0692	Right Brush Holder	(1)
39 22-18-0750	Carbon Brush Assembly	(2)
40 31-50-0310	Motor Housing	(1)
41 06-72-0810	Tapered Rivet	(1)
42 31-92-0225	Trigger Paddle	(1)
43 12-79-5111	Nameplate Blank	(1)
44 22-64-0235	Cord Set	(1)
45 44-76-0110	Cord Protector	(1)
46 06-82-7395	8-16 x 1-3/4" Torx Taptite Screw	(4)
47 22-20-0691	Left Brush Holder	(1)
49-96-4725	Plate Wrench	(1)
49-96-0330	2.5 MM Allen Wrench	(1)

**FIG. NOTES**

46 Torque to 20-25 in./lbs.

**FIG. LUBRICATION**

6 3/4 Oz. Type "G" Grease, No. 49-08-4140.

MILWAUKEE ELECTRIC TOOL CORPORATION  
13135 W. LISBON RD., BROOKFIELD, WI 53005