



Operating Instructions and Parts Manual AFS-1000C Air Filtration System



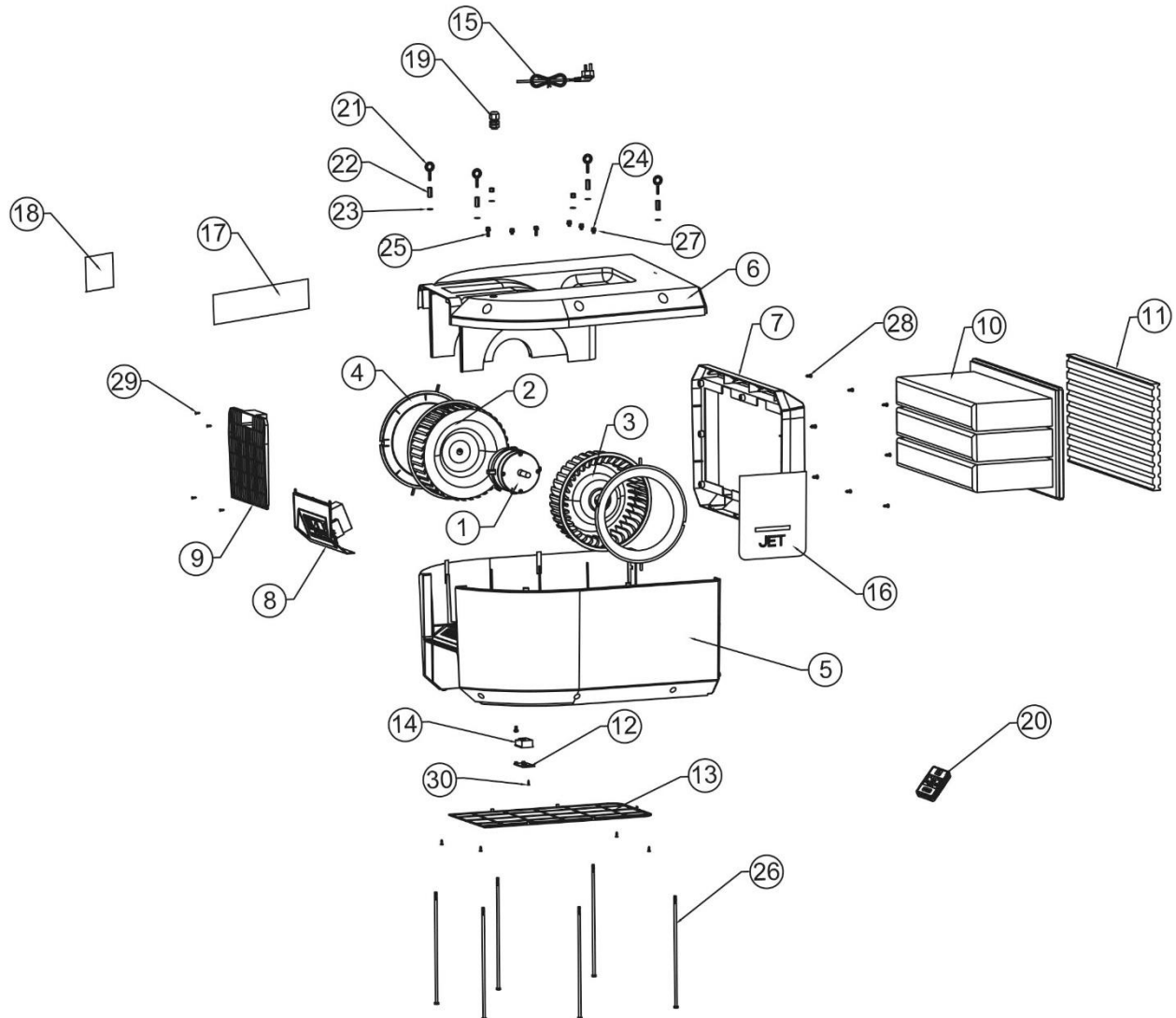
JET
427 New Sanford Road
LaVergne, Tennessee 37086
Ph.: 800-274-6848
www.jettools.com

Part No. M-713000
Edition 3 01/2022
Copyright © 2022 JET

12.0 Replacement Parts

Replacement parts are listed on the following pages. To order parts or reach our service department, call 1-800-274-6848 Monday through Friday, 8:00 a.m. to 5:00 p.m. CST. Having the Model Number and Serial Number of your machine available when you call will allow us to serve you quickly and accurately.

12.1.1 AFS Unit – Exploded View



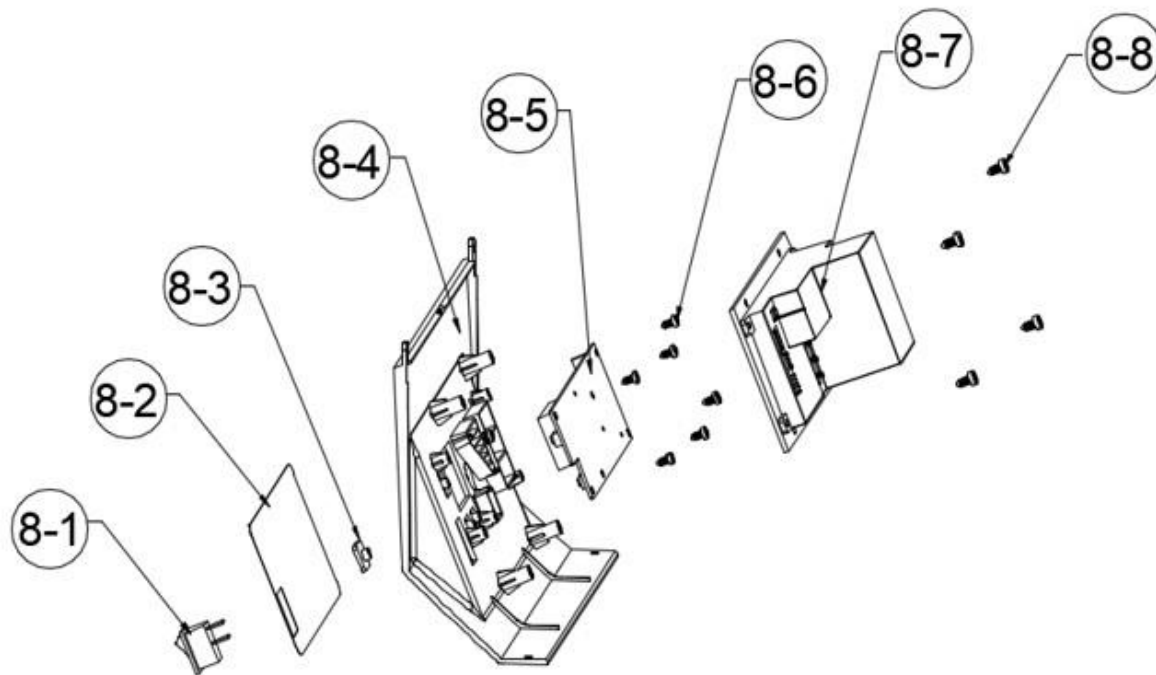
12.1.2 AFS Unit – Parts List

Index No	Part No	Description	Size	Qty
1	AFS1000C-001	Motor		1
2	AFS1000C-002	Fan blade (Right)		1
3	AFS1000C-003	Fan blade (Left)		1
4	AFS1000C-004	Deflector		2
5	AFS1000C-005	Air filter lower case		1
6	AFS1000C-006	Air filter upper case		1
7	AFS1000C-007	Air filter bezel		1
8		Display Module Assembly (SEE 12.2.1 for detail)		1
9	AFS1000C-009	Nets		1
10	708733	Inner three-pocket filter		1
11	708731	Electrostatic outer filter		1
12	AFS1000C-012	Dust sensor cover		1
13	AFS1000C-013	Bottom cover		1
14	AFS1000C-014	Dust sensor		1
15	AFS1000C-015	Power cord		1
16	JET-79B	JET Stripe (7.67"X9.05")		1
17	AFS1000C-MD	Model Decal 1000C		1
18	AFS1000C-018	Warning label		1
19	AFS1000C-019	Cable glands		1
20		Remote Control Assembly (SEE 12.3.1 for detail)		1
21	AFS1000C-021	Eye bolt	M6X20	4
22	AFS1000C-022	Standoff	M6X25	4
23	TS-1550041	Flat washer	M6	6
24	AFS-1000C-032	Screw, Flanged Hex Head, Phillips	M6X10	5
25	AFS-1000C-033	Screw, Flanged Hex Head, Phillips	M6X20	2
26	AFS1000C-023	Hex head bolt	M6X300	6
27	TS-1551041	Spring washer	M6	7
28	AFS1000C-024	Screw, Pan Head, Phillips (Tapping screw)	M5X12	8
29	AFS1000C-025	Flat head screw (Tapping screw)	M4X10	8
30	AFS1000C-026	Flat head screw (Tapping screw)	M3X10	1
31	AFS1000C-027	Motor Label (not shown)		1
32	AFS1000C-028	ID Label (not shown)		1
33	AFS1000C-029	Energy star Label (not shown)		1
34	AFS1000C-030	Display cable (not shown)		1
35	AFS1000C-031	Dust sensor cable (not shown)		1
36	AFS1000C-HK	Hardware kit includes 4x item 21 (eye bolts) and item 20 (remote control assembly)		1

Replacement Filters:

..... 708731 Electrostatic Outer Filter
..... 708732 Washable Electrostatic Outer Filter
..... 708733 Inner Three-Pocket Filter
..... 708734 Charcoal Filter

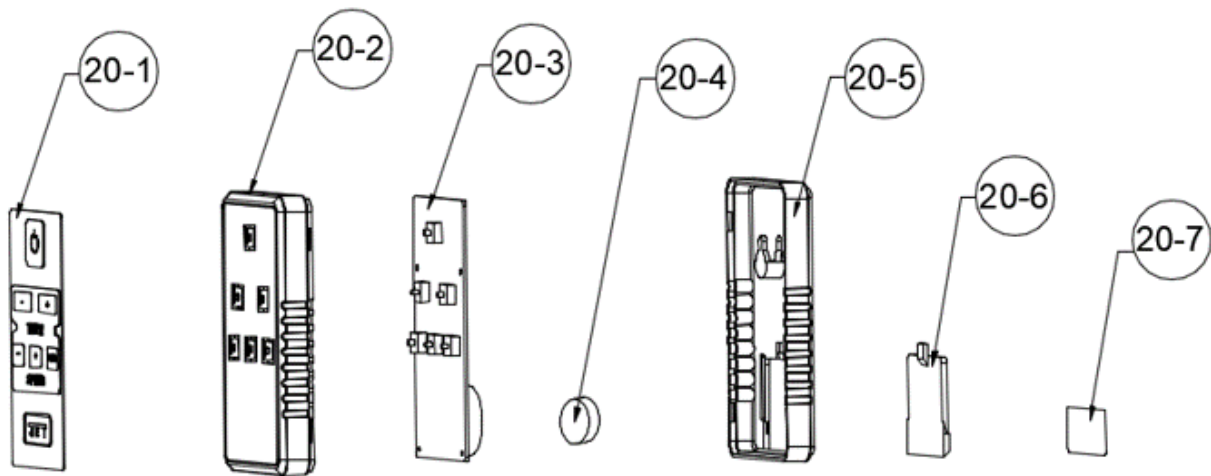
12.2.1 Display Module Assembly – Exploded View



12.2.2 Display Module Assembly – Parts List

Index No	Part No	Description	Size	Qty
8	AFS1000C-DMA	Display Module Assembly		1
8-1	AFS1000C-DM1	AC power switch		1
8-2	AFS1000C-DM2	Display label		1
8-3	AFS1000C-DM3	Auto button		1
8-4	AFS1000C-DM4	Display cover		1
8-5	AFS1000C-DM5	Display PCB		1
8-6	AFS1000C-DM6	Screw, Pan Head, Phillips (Tapping screw)	M3X6	6
8-7	AFS1000C-DM7	Control module		1
8-8	AFS1000C-DM8	Screw, Pan Head, Phillips (Tapping screw)	M4X10	4

12.3.1 Remote Control Assembly – Exploded View



12.3.2 Remote Control Assembly – Parts List

Index No	Part No	Description	Size	Qty
20	AFS1000C-RCA	Remote Control Assembly		1
20-1	AFS1000C-RC1	Remote label		1
20-2	AFS1000C-RC2	Remote front case		1
20-3	AFS1000C-RC3	Remote PCB		1
20-4	AFS1000C-RC4	Button cell	CR2032	1
20-5	AFS1000C-RC5	Remote rear case		1
20-6	AFS1000C-RC6	Battery cover		1
20-7	AFS1000C-RC7	Remote FCC label		1