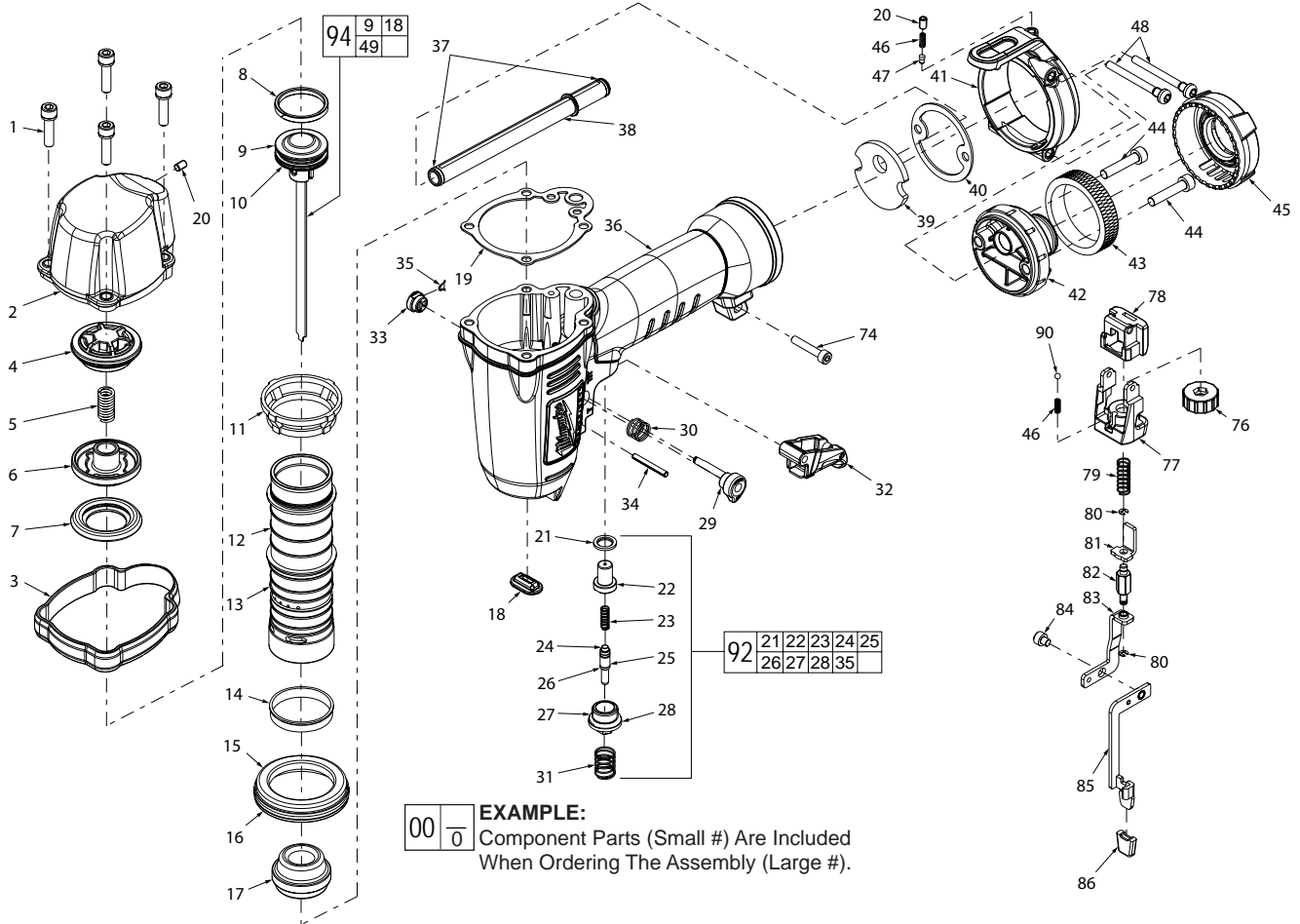




# SERVICE PARTS LIST

SPECIFY CATALOG NO. AND SERIAL NO. WHEN ORDERING PARTS		REVISED BULLETIN	DATE
<b>BRAD NAILER</b>			Mar. 2008
<b>CATALOG NO. 7150-21</b>	STARTING SERIAL NUMBER	<b>A90B</b>	
		WIRING INSTRUCTION	



**EXAMPLE:**  
 Component Parts (Small #) Are Included  
 When Ordering The Assembly (Large #).

FIG.	PART NO.	DESCRIPTION OF PART	NO. REQ.	FIG.	PART NO.	DESCRIPTION OF PART	NO. REQ.
1	05-84-0835	Bolt Assembly	4	34	06-65-1435	Spring Pin, 3 mm x 25 mm	1
2	42-92-1440	Top Cap	1	35	44-90-0825	Ring	1
3	42-38-0385	Bumper Band	1	36	28-50-0820	Tool Body	1
4	42-76-0820	Valve Collar	1	37	34-40-3155	O-Ring	2
5	40-50-3105	Upper Valve Spring	1	38	44-94-0565	Link Rod	1
6	44-62-0270	Head Valve Piston	1	39	43-31-0380	Filter	1
7	45-06-0935	Seal	1	40	43-44-1250	End Cap Gasket	1
8	44-90-0815	Piston Ring	1	41	42-70-0410	Spring Retainer (Belt Clip)	1
9	43-12-0266	Driver Assembly	1	42	42-92-1370	End Cap	1
10	34-40-3210	O-Ring, 23 mm x 2 mm	1	43	43-31-0365	Muffler	1
11	42-76-0810	Valve Collar	1	44	05-84-0975	Bolt, M5 x 0.8-25	1
12	42-98-0365	Cylinder	1	45	31-05-0415	Deflector	1
13	34-40-3215	O-Ring, 32 mm x 2 mm	1	46	40-50-3020	Spring	1
14	44-90-0725	Cylinder Ring	1	47	45-08-0460	Positioning Shaft	1
15	45-36-1650	Cylinder Spacer	1	48	05-83-0535	Round Head Philips Bolt	2
16	34-40-3185	O-Ring, 47.5 mm x 2 mm	1	62	44-90-0780	E-Ring	1
17	42-38-0305	Bumper	1	76	43-98-0765	Adjustment Knob	1
18	43-56-0851	Driver Guide	1	77	43-56-0885	Work Contact Element Guide	1
19	45-06-0905	Top Cap Seal	1	78	43-78-0450	Work Contact Element Spring Hub	1
20	05-84-0950	Set Screw M4 x 0.7-6	1	79	40-50-3045	Work Contact Element Spring	1
21	45-06-0955	Seal	1	80	44-90-0760	E-Ring	1
22	43-64-0145	Trigger Valve Head	1	81	42-36-1990	Work Contact Element	1
23	40-50-3190	Trigger Valve Spring	1	82	44-94-0590	Adjustment Rod Assembly	1
24	44-70-0260	Trigger Valve Plunger	1	83	42-36-2025	Work Contact Bracket B	1
25	34-40-3290	O-Ring	1	84	05-84-0875	Bolt M4 x 0.7-4	1
26	34-40-3160	O-Ring, 2.5 mm x 1.5 mm	1	85	42-36-1965	Work Contact Element A	1
27	34-40-3305	O-Ring	1	86	42-38-0340	No Mar Pad	1
28	42-52-0415	Trigger Valve Plunger Cap	1	90	02-02-2100	Ball	1
29	44-10-0660	Selector	1	94	43-12-0267	Driver Assembly Kit	1
30	40-50-3210	Selection Spring	1				
31	40-50-3155	Spring	1				
32	31-92-0205	Trigger Assembly Retainer	1				
33	44-86-0710		1				

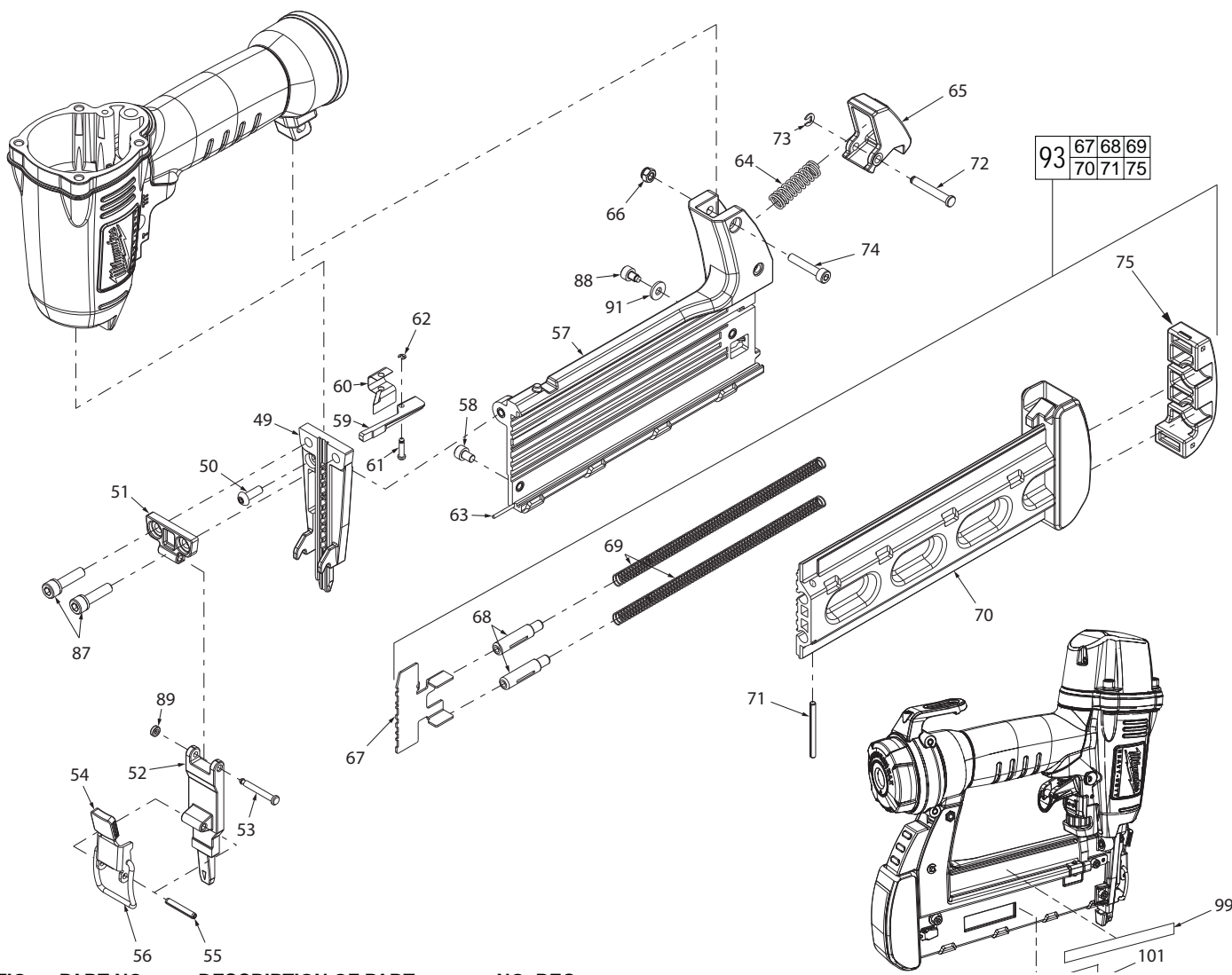


FIG.	PART NO.	DESCRIPTION OF PART	NO. REQ.
49	43-56-0861	Driver Guide	1
50	05-83-0505	Half Round Hex Bolt (M4 x 0.7-12)	1
51	42-92-1405	Cover, Driver Guide B	1
52	42-92-1390	Cover, Driver Guide A	1
53	44-60-1865	Fixed Pin	1
54	45-88-1705	Lock Handle Grip	1
55	06-65-1450	Spring Pin	1
56	44-20-0855	Lock Handle Assembly	1
57	43-40-0465	Magazine A	1
58	05-84-0880	Bolt, SHC, M4 x 0.7-6	1
59	42-36-2045	Work Contact Element Stop Bracket	1
60	40-50-3090	Work Contact Element Stop Pin	1
61	44-60-1880	Work Contact Element Stopper Pin	1
63	42-18-0300	Magazine Bar	1
64	40-50-3215	Magazine Latch Spring	1
65	44-20-0865	Latch	1
66	05-59-2040	Lock Nut, M4 x 0.7	1
67	43-72-0375	Pusher	1
68	45-08-0465	Pusher Spring Shaft	2
69	40-50-3125	Pusher Spring	2
70	43-40-0500	Magazine B	1

FIG.	PART NO.	DESCRIPTION OF PART	NO. REQ.
71	06-65-1445	Spring Pin	1
72	44-50-0200	Latch Pin	1
73	44-90-0765	E-Ring	1
74	05-84-0890	Bolt M4 x 0.7-22	1
75	42-92-1470	Protecting Hood Cover	1
87	05-84-0840	Bolt Assembly	2
88	05-84-0810	Bolt M4 x 0.7-6	1
89	44-86-0700	Retainer	1
91	45-88-1730	Flat Washer	1
92	31-94-0105	Trigger Valve Assembly	1
93	45-24-0035	Magazine Assembly	1
99	12-98-0320	Service Nameplate	1
101	10-20-3310	Warning Label	1
	14-70-0130	Overhaul Kit (Not Shown)	
	14-70-0195	Driver Maintenance Kit (Not Shown)	

**Lubrication:**

Type I Grease 49-08-7100

Clean all parts with a dry, clean cloth.

- 2, 4, 5, 6, 7                    Place a thin coating of grease into internal bore of top cap (2). Coat parts (4 – 7) and reassemble in order shown.
- 8, 9, 10                        Coat o-ring (10) and piston ring (8) prior to installing into groove of driver assembly (9).
- 18, 20, 23, 24                Coat o-ring (13), cylinder spacer (15), o-ring (16) and cylinder ring (14) prior to installing onto cylinder (12).
- 21, 22 23, 24, 25, 26 27, 28    Coat individual parts of the trigger valve assembly (21-27).  
Note: Plunger cover (28) does not require lubrication.

**Disassembly:**

- 1, 2 Remove hex bolts (1) from top cap (2) using a 4mm hex key.
- 2, 4, 5, 6, 7 Remove valve assembly 4, 5, 6, and 7 from top cap (2) using a flat blade screwdriver.
- 11, 12 Remove press ring (11) from top of cylinder (12) prior to removing driver/cylinder assemblies.
- 8, 9, 10, 12, 13, 14, 15, 16, 17, 36 Remove driver assembly (8, 9, 10), and cylinder assembly (12, 13, 14, and 17), from tool body (36) at the same time by placing two flat blade screwdrivers under ring of cylinder (12) 180° apart, and gently prying the cylinder from the tool body.  
Note: Valve bumper (17) may stay in cylinder (12) or remain in tool body (36).
- 15, 16, 36 Remove cylinder spacer (15) and o-ring (16) from tool body (36) by placing a flat blade screwdriver under spacer (15) and gently lifting spacer assembly out of the tool body (36).
- 57, 70, 88, 91 Remove magazine B (70) from magazine A (57) by removing screw/washer (88, 91).
- 29, 30, 31, 32, 33, 35, 36, Remove selector assembly (29, 30, 33, 35), and trigger assembly (31,32) from tool body (36) by placing a 3/32 in. (2.5 mm) punch inside half-moon slot of retainer (33) and gently tapping shaft of selector (29) to separate retainer (33) from shaft (29). Remove spring (30), retainer (33) ring (35), spring, (31) and trigger (32) from tool body.
- 21, 22 23, 24, 25, 26, 27, 28, 36 Remove trigger valve plunger cap (28) from tool body (36) using an 8 mm wrench, and remove remaining trigger valve components (21-27).
- 20, 41, 42, 48 Remove belt clip (41) from end cap (42) by removing bolts (48) and loosening set screw (20) only a few turns counterclockwise.
- 42, 45 Remove deflector (45) from end cap (42) using a flat blade screwdriver. Note: Using excessive force will damage or destroy deflector.

**Re-Assembly:**

- 21, 22, 23, 24, 25, 26, 27, 28, 36 Reinstall trigger valve assembly components (21-28) into tool body (36) in order shown. Thread assembly into tool body (36) by hand a couple of turns to insure external threads on trigger valve plunger cap (28) properly engage with internal threads inside tool body (36). Secure assembly using an 8 mm wrench.
- 24, 29, 30, 31, 32, 33, 35, Reinstall selection lever assembly (29, 30, 33, 35) and trigger assembly (31 and 32) by doing the following.
  - Place spring (30) onto shaft of selection lever (29).
  - Position spring (31) and trigger (32) over plunger of trigger valve assembly (24).
  - Insert selection lever assembly (29 and 30) into tool body (36) and align half-moon slot of retainer (33) with half-moon shaft of selection lever (29) and snap retainer assembly (33 and 35) onto the shaft.
- 9, 36 Install flat side of driver guide (9) towards front of tool body (36).
- 12, 14 Reinstall cylinder ring (14) onto cylinder (12) with large flanged end facing the top of cylinder (12).
- 8, 9, 10, 12, 13, 14, 15, 16, 17, 36 Reassemble driver assembly (8, 9, 10), and cylinder assembly (12, 13, and 14) and combine the two together. Set aside. Install cylinder spacer assembly (15, 16) and valve bumper (17) into tool body (36). Install assembly into tool body.  
Note: Flat side of driver assembly (9) must face front of tool body (36).
- 6, 14, 19 Reinstall press ring (11) onto top of cylinder (12) with wide edge facing toward top cap (2).
- 2, 4, 5, 6, 7 Reinstall valve collar (4) into internal bore of top cap (2). Place upper valve spring (5) into center of valve collar (4) and push head valve piston assembly (6 and 7) into top cap, applying sufficient pressure to insure seal and collar fit into position inside top cap (2).
- 1, 2, 3, 36 Reinstall top cap assembly (2, 3, 4, 5, 6, and 7) onto tool body (36) using hex bolts (1).  
Note: To properly seat top cap, tighten the screws at alternating corners a few turns at a time until all screws are secure.
- 57, 70, 88, 91 Reinstall magazine B (70) into magazine A (57) and install screw/washer (88, 91)
- 39, 42 Install smooth side of filter (39) toward end cap (42).
- 20, 41, 42, 48 Reassemble belt clip (41) onto end cap (42) and tighten set screw (20) until flush with the top thread of the clip. Install bolts (48).  
  
Apply Blue Loctite® 242 to fastener threads (1), (44), (50), (58), (84) and (87).

