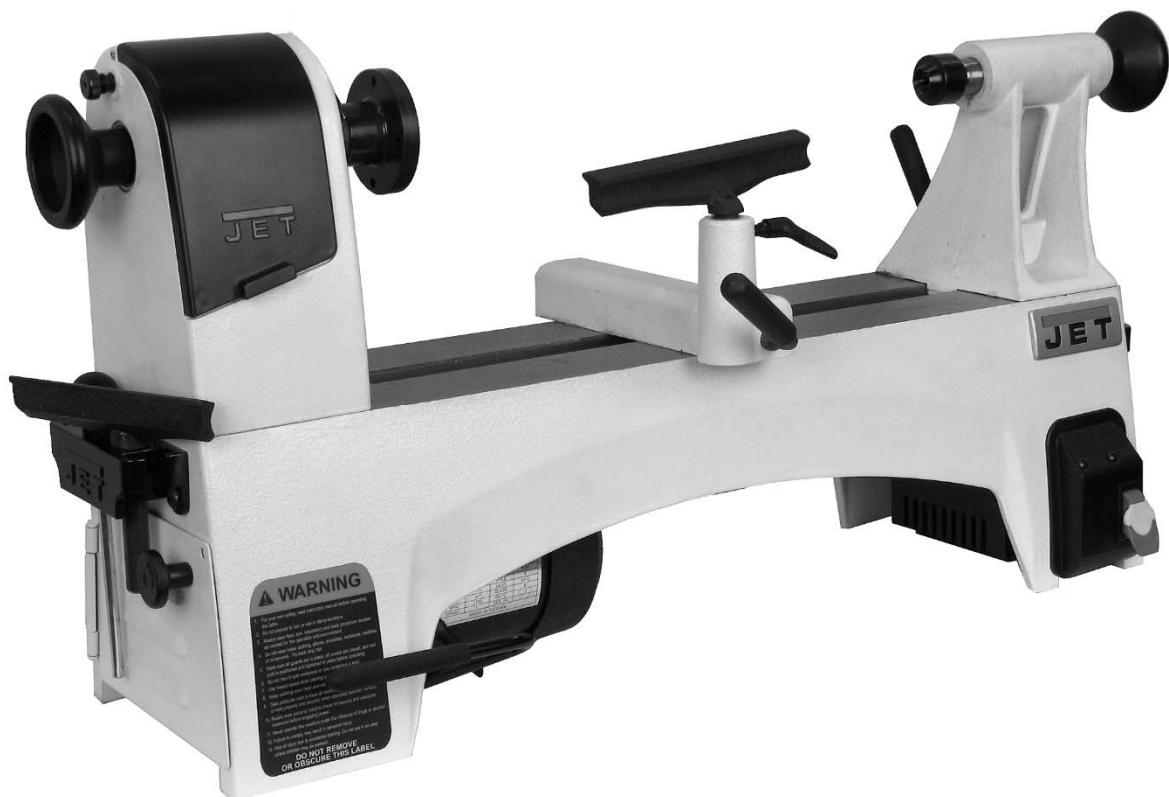




# Operating Instructions and Parts Manual

## 12 x 21-inch, 6-Speed Wood Lathe

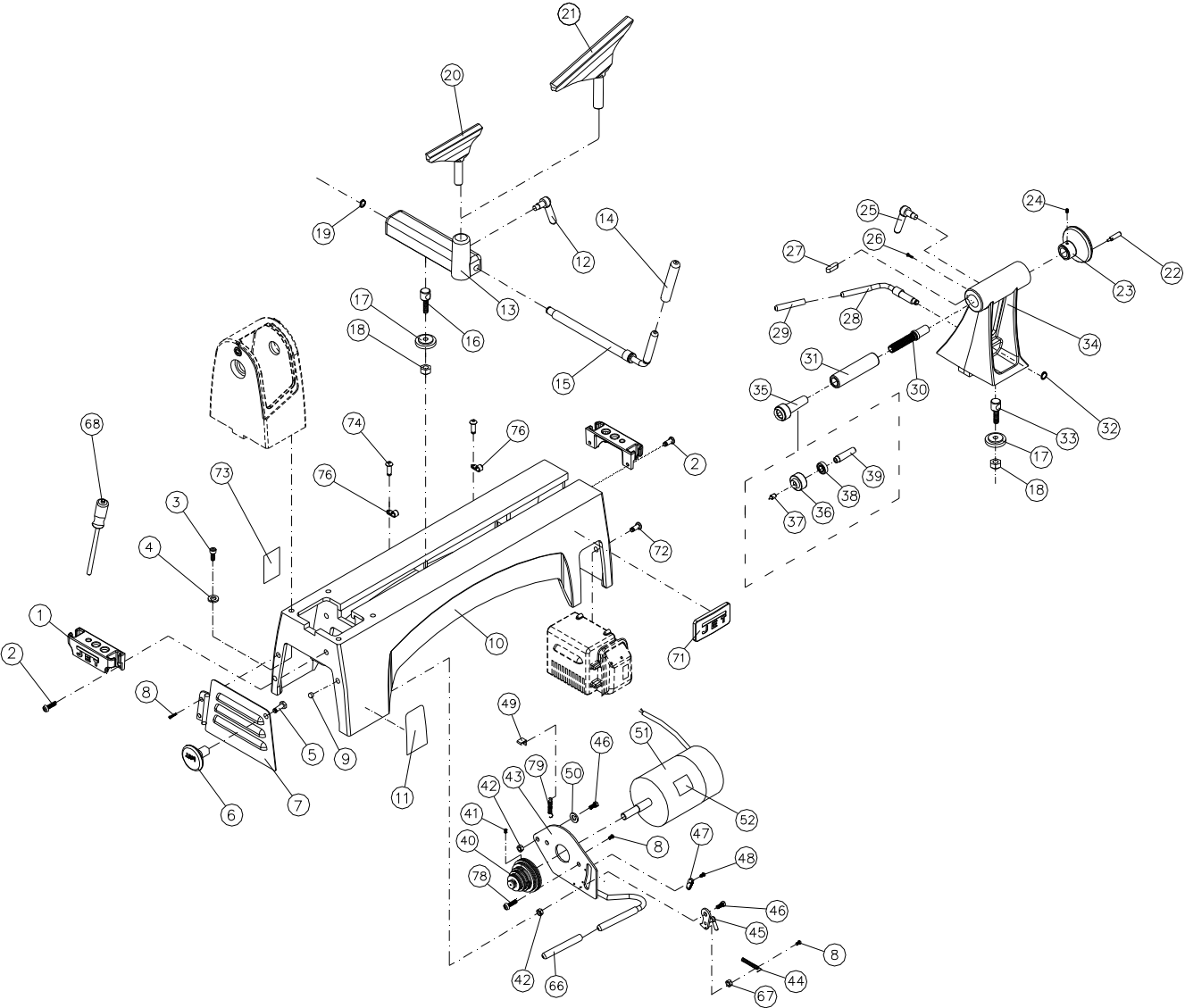
Model JWL-1221SP



**JET**  
427 New Sanford Road  
LaVergne, Tennessee 37086  
Ph.: 800-274-6848  
www.jettools.com

**Part No. M-719115**  
Edition 1 06/2018  
Copyright © 2018 JET

15.1.1 JWL-1221SP Bed Assembly – Exploded View

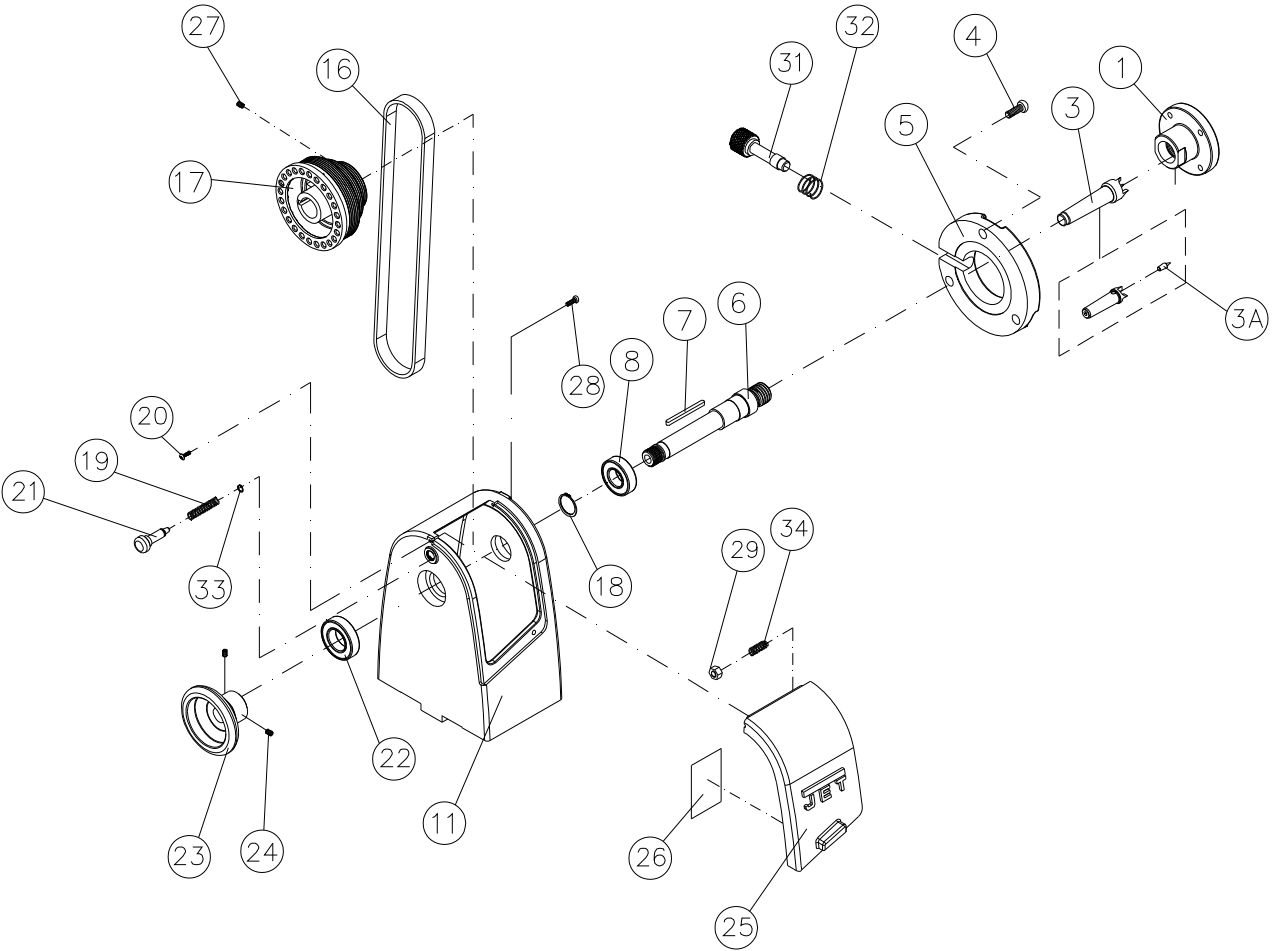


## 15.1.2 JWL-1221SP Bed Assembly – Parts List

Index No	Part No	Description	Size	Qty
1	JWL1221VS-201	Tool Caddy		2
2	TS-0255021	Socket Head Button Screw	5/16"-18x1/2"	4
3	TS-0207071	Socket Head Cap Screw	1/4"-20x1-1/4"	4
4	TS-0720071	Lock Washer	1/4"	4
5	TS-1490021	Hex Cap Screw	M8x16	1
6	6295717	Knob		1
7	JWL1221VS-207	Motor Pulley Access Door		1
8	TS-081C022	Pan Head Screw	#10-24X3/8"	3
9	JWL1221VS-209	Magnet		1
10	JWL1221VS-210	Bed		1
11	JWL1221VS-211	Warning Label		1
	JWL1221VS-TBA	Toolrest Base Assembly (includes #12 thru #19)		1
12	JML-59A	Lock Handle Assembly	5/16"-18x5/8"	1
13	JWL1221VS-213	Toolrest Base		1
14	JWL1221VS-214	Rubber Cover		1
15	JWL1221VS-215	Eccentric Rod		1
16	JWL1221VS-216	Toolrest Clamp Bolt		1
17	JML-44	Clamp		2
18	JML-81	Hex Nut		2
19	JML-49	C-Ring	STW-12	1
20	JWL1220-142	Toolrest	6"	1
21	JWL1220-142A	Toolrest	10"	1
	JWL1221VS-TA	Tailstock Assembly (includes # 17, 18, 22 thru #34)		1
	JWL1221VS-THA	Tailstock Handwheel Assembly (includes #22 thru #24)		1
22	JWL1221VS-222	Handle		1
23	JWL1221VS-223	Handwheel		1
24	TS-0267021	Set Screw	1/4"-20x1/4"	2
25	JML-45A	Lock Handle Assembly, Tailstock	5/16"-18x3/4"	1
26	JWL1221VS-115	Socket Head Button Screw	#10-32x5/8"	1
27	JWL1221VS-227	Key		1
28	JML-58	Eccentric Rod, Tailstock		1
29	JWL1221VS-229	Rubber Cover		1
30	JWL1221VS-230	Lead Screw		1
31	JWL1221VS-231	Quill		1
32	JML-63	C-Ring	STW-10	1
33	JWL1221VS-233	Tailstock Clamp Bolt		1
34	JWL1221VS-234	Tailstock		1
35	708331	Live Center Assembly (includes #36 thru #39)		1
36	JML-52	Live Center Head		1
37	JML-52A	Center Point for Live Center		1
38	BB-6002ZZ	Ball Bearing	6002ZZ	1
39	JML-54	Live Center Shaft		1
40	JWL1221SP-240	Motor Pulley	6-step	1
41	6295796	Nylon Insert Socket Set Screw	1/4"-20x3/8"	2
42	TS-0640081	Nylon Nut	5/16"-18	2
43	JWL1221SP-243	Motor Plate		1
44	JWL1221VS-244	Spring	69L	1
45	JWL1221VS-245	Ratchet Key		1
46	TS-0051061	Hex Cap Screw	5/16"-18x1-1/4"	2
47	JWL1221VS-247	Rack		1
48	TS-081C011	Pan Head Screw	#10-24x1/4"	2
49	JWL1221VS-249	Hook		1
50	TS-0680031	Flat Washer	5/16"	1
51	JWL1221SP-251	Motor	3/4HP 1PH 115V	1
52	JWL1221SP-252	Motor Label		1
	JWL1221SP-251MF	Motor Fan		1
	JWL1221SP-251MFC	Motor Fan Cover		1
	JWL1221SP-251RC	Running Capacitor	40mF 250VAC	1
	JWL1221SP-251RCC	Running Capacitor Cover		1

Index No	Part No	Description	Size	Qty
66	JWL1221VS-266	Rubber Cover		1
67	TS-0560071	Hex Nut	#10-24	1
68	JML-11	Knockout Rod		1
71	JET-92	JET Logo with 3M Adhesive	92x38mm	1
72	TS-081C072	Pan Head Screw	#10-24x1-14"	2
73	JWL1221SP-273	ID Label		1
74	TS-0253031	Socket Head Button Screw	#10-24x1/2"	2
76	JWL1221VS-276	Clamp	1/2"	2
78	TS-0254021	Socket Head Button Screw	1/4-20 x 1/2"	2
79	JWL1221SP-279	Spring	48L	1

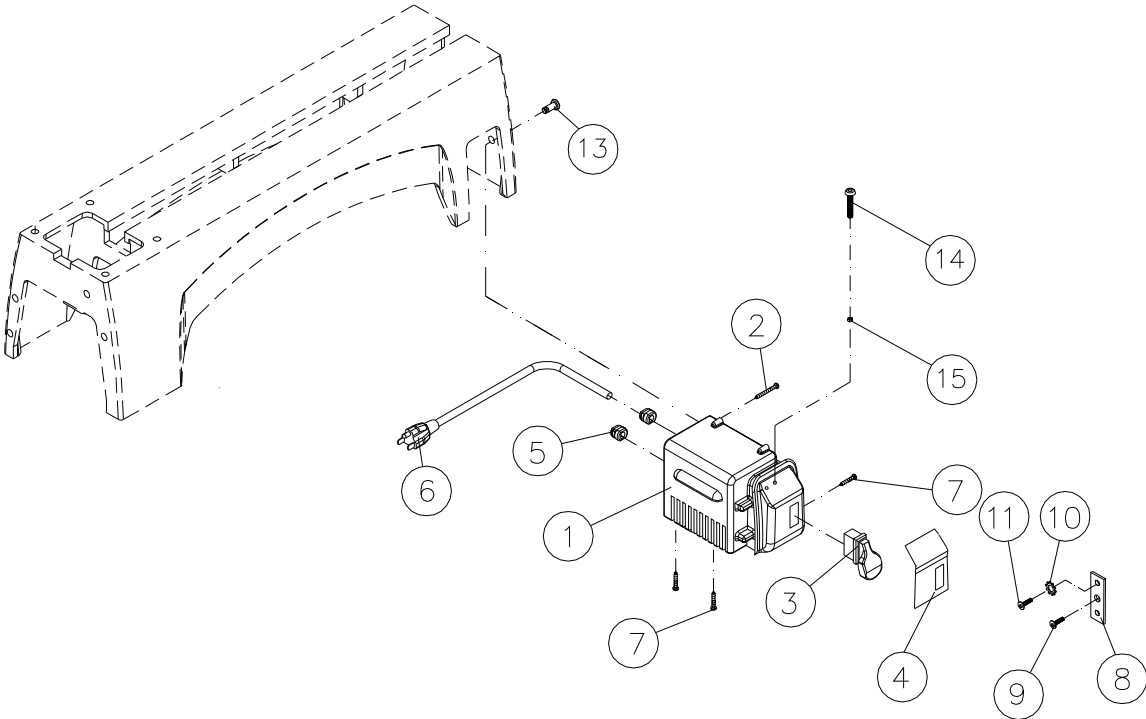
15.2.1 JWL-1221SP Headstock Assembly – Exploded View



## 15.2.2 JWL-1221SP Headstock Assembly – Parts List

Index No	Part No	Description	Size	Qty
	JWL1221SP-HA	Headstock Assembly ( <i>includes #4 thru #34</i> )		1
1	JML-2	Faceplate	3"	1
3	JML-3	Spur Center	MT2	1
3A	JML-3A	Center Point for Spur Center		1
4	TS-0253031	Socket Head Button Screw	#10-24X1/2"	3
5	JWL1221VS-105A	Cover		1
6	JWL1221VS-106A	Spindle	1"-8TPI	1
7	JML-5	Key	5x5x25mm	1
8	BB-6005VV	Ball Bearing	6005VV	1
11	JWL1221VS-111	Headstock Casting		1
16	JWL1221SP-116	V-Belt	310J-4	1
17	JWL1221SP-117	Spindle Pulley	6-step	1
18	6295710	C-ring	S-25	1
19	JML1014-188	Spring		1
20	JWL1221VS-120	Pan Head Screw	M3x35	1
21	JML1014-189	Index Pin		1
22	BB-6004VV	Ball Bearing	6004VV	1
23	JWL1221VS-123	Handwheel		1
24	TS-0267021	Set Screw	1/4"-20x1/4"	2
25	JWL1221VS-125	Pulley Access Door		1
26	JWL1221SP-126	Speed Label		1
27	TS-0267041	Set Screw	1/4"-20x3/8"	2
28	JWL1221VS-128	Pan Head Screw	M3x50	1
29	4224B-179	Nylon Nut	M3	2
31	JWL1221VS-131A	Spindle Lock Pin		1
32	JWL1221VS-132	Spring		1
33	JML1014-187	C-Ring	STW-9	1
34	JWL1221VS-134	Spring		1

### 15.3.1 JWL-1221SP Switch Box Assembly – Exploded View



### 15.3.2 JWL-1221SP Switch Box Assembly – Parts List

Index No	Part No	Description	Size	Qty
.....	JWL1221SP-SBA.....	Switch Box Assembly (includes #1 thru #15)	.....	1
1	JWL1221SP-301	Switch Box (includes #1, 4, 14, 15)	.....	1
2	JWL1221VS-302	Tapping Screw	M3x19mm	2
3	JML-65	Main Switch	.....	1
4	JWL1221SP-304	Control Panel Label	.....	1
5	JWL1221VS-320	Strain Relief	6P-4	2
6	JWL1015-170	Power Cable	.....	1
7	JWL1221SP-307	Phillips Pan Hd Tapping Screw	M3.5x 8mm	4
8	JWL1015-171	Ground Plate	.....	1
9	JWL1015-163	Tapping Screw	M3.5x6mm	1
10	TS-073304	External Tooth Lock Washer	1/4"	2
11	TS-1533032	Pan Head Screw	M5x10	2
12	JWL1221SP-312	Dust Sheet (not shown)	.....	2
13	TS-081C072	Pan Head Screw	#10-24x1-14"	2
14	F009669	Socket Head Button Screw	#10-24x3/8"	2
15	TS-0560071	Hex Nut	#10-24	2