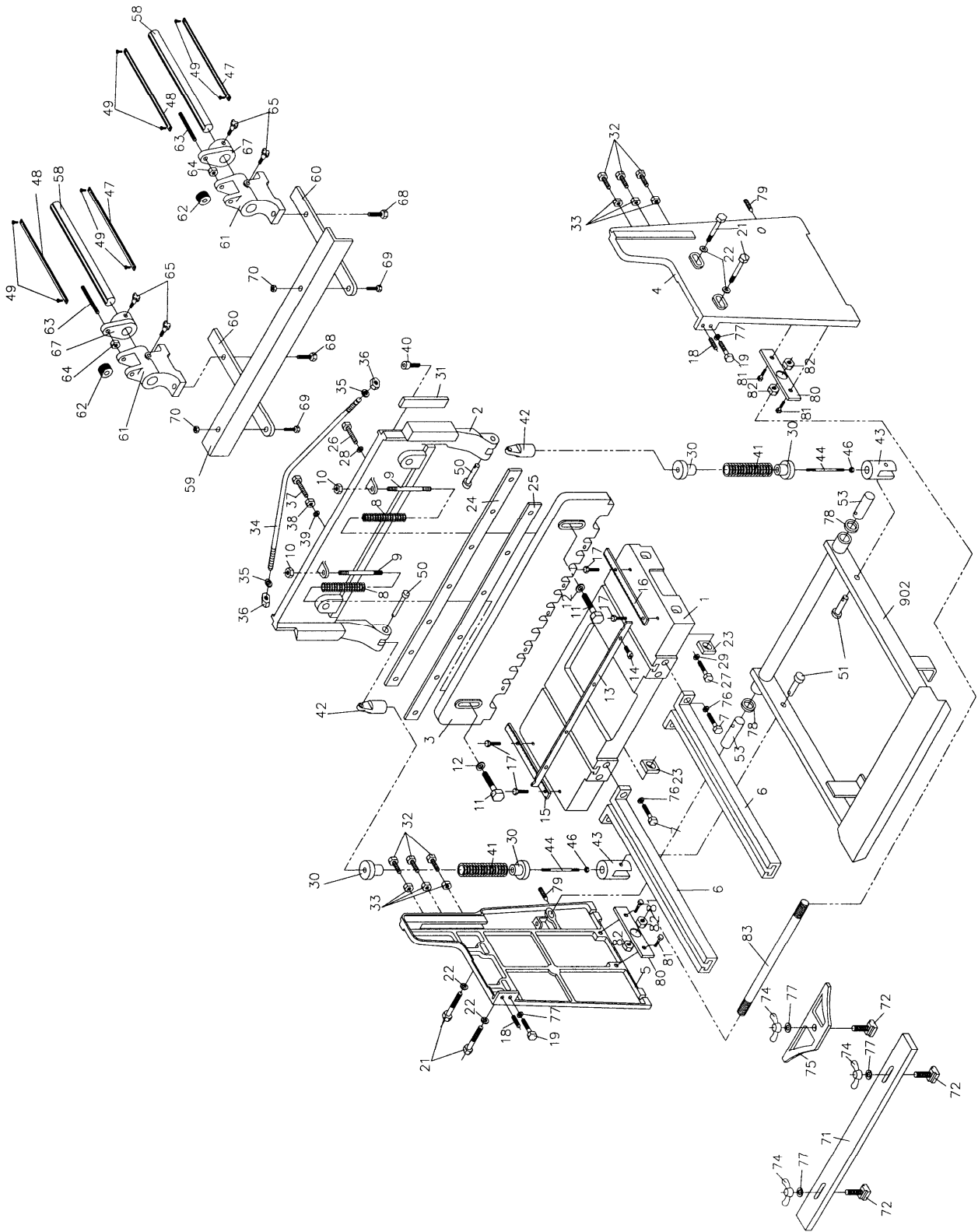


Breakdown for FS-1636H & FS-1652H Foot Shear



Parts List for the FS-1636H & FS-1652H Foot Shear

Index No.	Part No.	Description	Size	Qty
1	FS1636N-1	Table		1
	FS1652N-1	Table		1
2	FS1636N-2	Cutter Bar		1
	FS1652N-2	Cutter Bar		1
3	FS1636N-3	Hold Down		1
	FS1652N-3	Hold Down		1
4	FS1636N-4	R.H. Side Panel		1
5	FS1636N-5	L.H. Side Panel		1
6	FS1636N-6	Front Arm Extension		2
7	FS1636N-7	Screw	M12x45	4
8	FS1636N-8	Spring		2
9	FS1636N-9	Stud		2
10	FS1636N-10	Nut	M12	2
11	FS1636N-11	Screw	M12x80	2
12	FS1636N-12	Washer		2
13	FS1636N-13	Finger Guard		1
	FS1652N-13	Finger Guard		1
14	FS1636N-14	Screw	M6x12	4
15	FS1636N-15	Table Scale (L.H.)		1
16	FS1636N-16	Table Scale (R.H.)		1
17	FS1636N-17	Screw	M8x20	4
18	FS1636N-18	Set Screw	M10x45	2
19	FS1636N-19	Screw	M10x50	2
21	FS1636N-21	Bolt	M16x115	4
22	FS1636N-22	Washer	M16	4
23	FS1636N-23	Nut	M16	4
24	FS1636N-24	Upper Knife		1
	FS1652N-24	Upper Knife		1
25	FS1636N-25	Lower Knife		1
	FS1652N-25	Lower Knife		1
26	FS1636N-26	Screw	M10x40	7
27	FS1636N-27	Screw	M10x45	6
28	FS1636N-28	Washer		7
29	FS1636N-29	Washer		6
30	FS1636N-30	Spring Cap		4
31	FS1636N-31	Gib		2
32	FS1636N-32	Screw	M10x55	6
33	FS1636N-33	Nut	M10	6
34	FS1636N-34	Rod		1
	FS1652N-34	Rod		1
35	FS1636N-35	Washer	M16	2
36	FS1636N-36	Nut	M16	2
37	FS1636N-37	Screw	M16x80	1
38	FS1636N-38	Nut	M16	1
39	FS1636N-39	Washer	M16	1
40	FS1636N-40	Hex Socket Cap Screw	M10x30	2
41	FS1636N-41	Spring		2
42	FS1636N-42	Swivel Top		2
43	FS1636N-43	Swivel Bottom		2
44	FS1636N-44	Stud		2
46	FS1636N-46	Nut	M16	2
47	FS1636N-47	Scale (metric)		2
48	FS1636N-48	Scale (inches)		2
49	FS1636N-49	Screw	M4x8	4
50	FS1636N-50	Pin	Ø12x70	2
51	FS1636N-51	Pin	Ø12x45	2

53.....	FS1636N-53	Brake Pin	2	
58.....	FS1636N-58	Rod	2	
59.....	FS1636N-59	Stop	1	
.....	FS1652N-59	Stop	1	
60.....	FS1636N-60	Extension Bar.....	2	
61.....	FS1636N-61	Adjusting Block.....	2	
62.....	FS1636N-62	Adjusting Dial	2	
63.....	FS1636N-63	Adjusting Screw.....	2	
64.....	FS1636N-64	Nut	M10..... 2	
65.....	FS1636N-65	Knob	4	
67.....	FS1636N-67	Adjusting Bracket.....	2	
68.....	FS1636N-68	Screw	M10x25	4
69.....	FS1636N-69	Bolt.....	M10x25	2
70.....	FS1636N-70	Nut	M10.....	2
71.....	FS1636N-71	Stop	1	
.....	FS1652N-71	Stop	1	
72.....	FS1636N-72	"T" Nut.....	3	
74.....	FS1636N-74	Wing Nut	M10.....	3
75.....	FS1636N-75	Bevel Gauge	1	
76.....	FS1636N-76	Washer.....	4	
77.....	FS1636N-77	Washer.....	M10.....	5
78.....	FS1636N-78	Washer.....	2	
79.....	FS1636N-79	Set Screw.....	M10x50	2
80.....	FS1636N-80	Plate.....	2	
81.....	FS1636N-81	Screw	M12x35	4
82.....	FS1636N-82	Nut	M16.....	4
83.....	FS1636N-83	Connection Bar.....	Ø16x1081mm.....	1
.....	FS1652N-83	Connection Bar.....	Ø16x1463mm.....	1
902.....	FS1636N-902	Pedal Assembly.....	1	
.....	FS1652N-902	Pedal Assembly.....	1	
.....	FS1636N-ID.....	ID Label (not shown).....	1	
.....	FS1652N-ID.....	ID Label (not shown).....	1	
.....	FS1636N-W.....	Warning Label (not shown)	1	
.....	FS1636N-J	JET Label (not shown).....	1	

Ordering Replacement Parts

To order parts or reach our service department, call 1-800-274-6848 between 7:00 a.m. and 6:00 p.m. (CST), Monday through Friday. Having the Model Number and Serial Number of your machine available when you call will allow us to serve you quickly and accurately.



WALTER MEIER (Manufacturing) Inc.

427 New Sanford Road
 LaVergne, Tennessee 37086
 Phone: 800-274-6848
www.waltermeier.com