



Operating Instructions and Parts Manual

16-Gauge Foot-Operated Corner Notcher

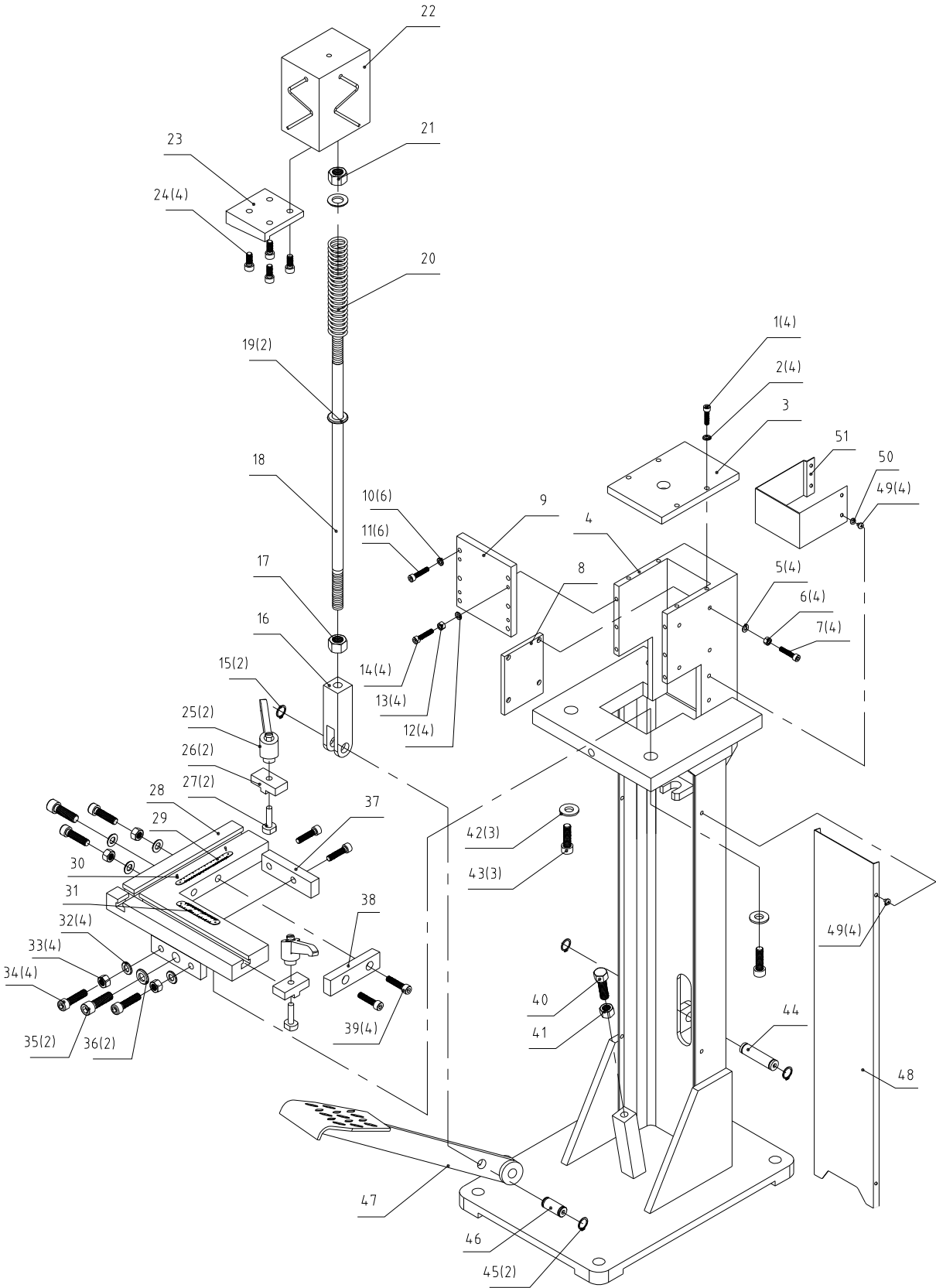
Model FN-16



JET
427 New Sanford Road
LaVergne, Tennessee 37086
Ph.: 800-274-6848
www.jettools.com

Part No. M-755017
Edition 3 08/2018
Copyright © 2017 JET

10.1.1 FN-16 Corner Notcher – Exploded View



10.1.2 FN-16 Corner Notcher – Parts List

Index No	Part No	Description	Size	Qty
1	TS-1503051	Socket HD Cap Screw	M6-1.0x20	4
2	TS-1550041	Flat Washer	M6	4
3	FN16-3	Top Plate		1
4	FN16-4	Stand		1
5	TS-1550041	Flat Washer	M6	4
6	TS-1540041	Hex Nut, Full	M6-1.0	6
7	TS-1503061	Socket HD Cap Screw	M6-1.0x25	6
8	FN16-8	Side Plate		1
9	FN16-9	Front Plate		1
10	TS-1540041	Flat Washer	M6	6
11	TS-1503061	Socket HD Cap Screw	M6-1.0x25	6
12	TS-1540041	Flat Washer	M6	4
13	TS-1540041	Hex Nut, Full	M6-1.0	4
14	TS-1503071	Socket HD Cap Screw	M6-1.0x30	4
15	F006044	C-Retaining Ring, Ext	16mm	2
16	FN16-16	Yoke		1
17	TS-154009	Hex Nut, Full	M14-2.0	1
18	FN16-18	Pull Rod		1
19	TS-155009	Flat Washer	M14	2
20	FN16-20	Spring	D3.5x175mm	1
21	TS-154009	Hex Nut, Full	M14-2.0	1
22	FN16-22	Ram		1
23	FN16-23	Upper Blade		1
24	TS-1504041	Socket HD Cap Screw	M8-1.25x20	4
25	FN16-25	Adjustable Handle	M8	2
26	FN16-26	T-Block		2
27	FN16-27	T-Bolt		2
28	FN16-28	Work Table		1
29	FN16-29	Scale LH	in/mm	1
30	FS1652J-79	Rivet	2x5mm	4
31	FN16-31	Scale RH	in/mm	1
32	TS-1550071	Flat Washer	M10	4
33	TS-1540071	Hex Nut, Full	M10-1.5	4
34	TS-1505051	Socket HD Cap Screw	M10-1.5x35	4
35	TS-1506051	Socket HD Cap Screw	M12-1.75x40	2
36	TS-2360121	Flat Washer	M12	2
37	FN16-37	Lower Blade-2	4-1/8 L	1
38	FN16-38	Lower Blade-1	3-1/2 L	1
39	TS-1504041	Socket HD Cap Screw	M8-1.25x20	4
40	CS315-77	Hex Cap Screw	M12-1.75x55	1
41	TS-1540081	Hex Nut, Full	M12-1.75	1
42	TS-2360121	Flat Washer	M12	3
43	TS-1506051	Socket HD Cap Screw	M12-1.75x40	3
44	FN16-44	Long Pin		1
45	F006044	C-Retaining Ring, Ext	16mm	2
46	FN16-46	Short Pin		1
47	FN16-47	Pedal		1
48	FN16-48	Front Cover		1
49	6286494	Mach Screw, Pan Hd, Phillips	M5-0.8x6	8
50	TS-1550031	Flat Washer	M5	4
51	FN16-51	Blade Guard		1
52	TS-152707	Hex Wrench (not shown)	6mm	1
53	TS-227D081	Hex Wrench (not shown)	8mm	1
54	315900	Hex Wrench (not shown)	10mm	1
55	FN16-55	Open-End Wrench (not shown)	13/16mm	1
56	JET-92	JET Logo (not shown)	92x38mm	1
57	LM000294	ID Label, FN-16 (not shown)		1
58	LM000295	Warning Label, FN-16 (not shown)		1