



# Operating Instructions and Parts Manual Dual Station Abrasive Notcher

Models: DSAN4-1, DSAN4-3



**JET**  
427 New Sanford Road  
LaVergne, Tennessee 37086  
Ph.: 800-274-6848  
[www.jettools.com](http://www.jettools.com)

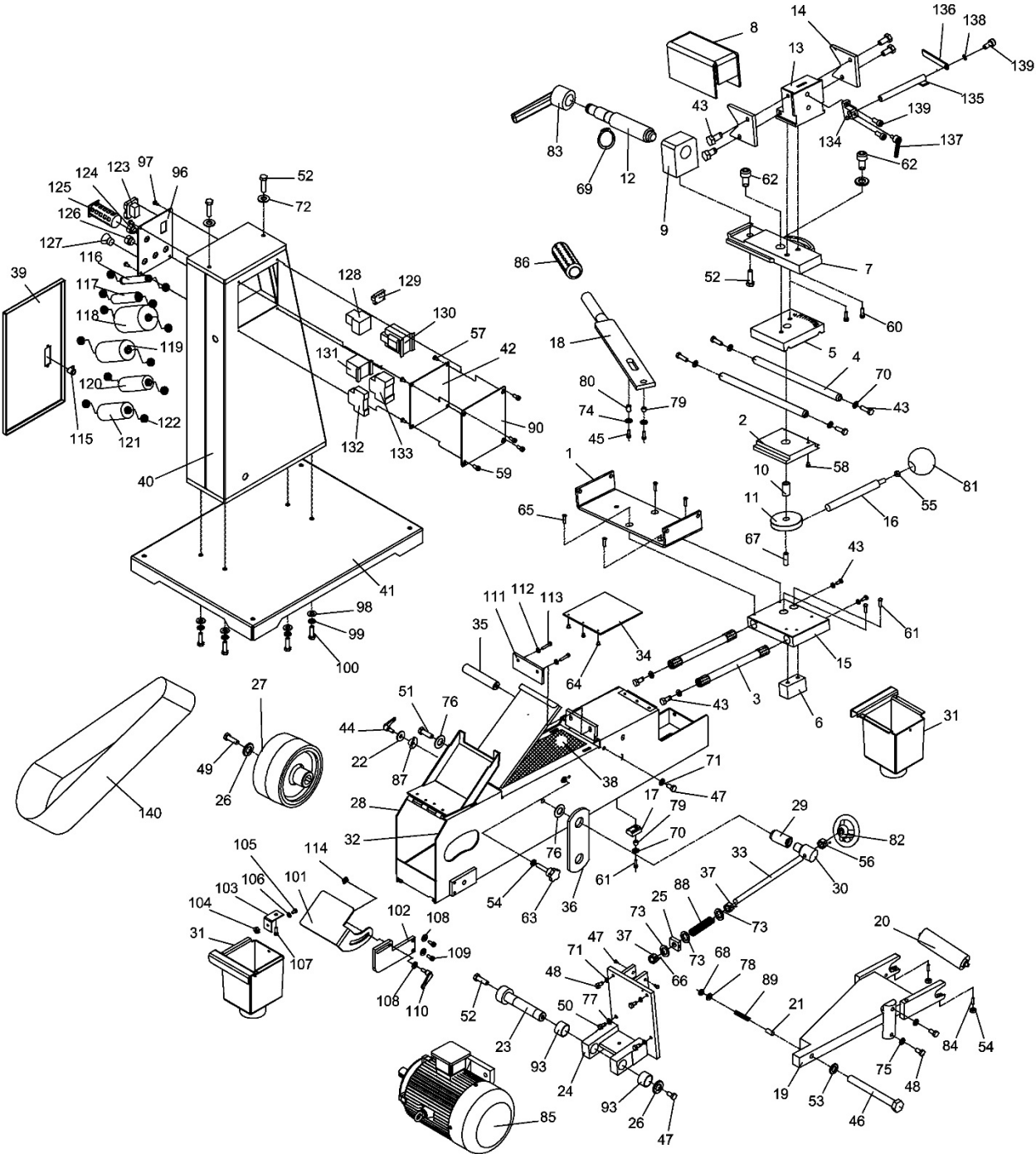
**Part No. M-756180**  
Edition 3 08/2018  
Copyright © 2017 JET

# 11.0 Replacement Parts

To order parts or reach our service department, call 1-800-274-6848 Monday through Friday, 8:00 a.m. to 5:00 p.m. CST. Having the Model Number and Serial Number of your machine available when you call will allow us to serve you quickly and accurately.

Non-proprietary parts, such as fasteners, can be found at local hardware stores, or may be ordered from JET. Some parts are shown for reference only, and may not be available individually.

## 11.1.1 DSAN4-1,-3 Dual Station Notchers – Exploded View



### 11.1.2 DSAN4-1,-3 Dual Station Abrasive Notchers – Parts List

Index No.	Part No.	Description	Size	Qty
1	DSAN4-1-1	Guide Seat		1
2	DSAN4-1-2	Sliding Plate		1
3	DSAN4-1-3	Short Guide Shaft	6-5/8"L	2
4	DSAN4-1-4	Long Guide Shaft	10"L	2
5	DSAN4-1-5	Upper Sliding Block		1
6	DSAN4-1-6	Small Sliding Block		1
7	DSAN4-1-7	Swivel Base		1
8	DSAN4-1-8	Jaw Box		1
9	DSAN4-1-9	Nut Block		1
10	DSAN4-1-10	Lock Screw		1
11	DSAN4-1-11	Locking Disc		1
12	DSAN4-1-12	Lead Screw		1
13	DSAN4-1-13	Fixed Jaw		1
14	DSAN4-1-14	Clamping Plate		2
15	DSAN4-1-15	Bottom Sliding Block		1
16	DSAN4-1-16	Locking Screw		1
17	DSAN4-1-17	Block		1
18	DSAN4-1-18	Feeding Handle with Grip (includes #86)		1
19	DSAN4-1-19	Roller Bracket		1
20	DSAN4-1-20	1" Roller	Ø1"x4-1/2" L	1
21	DSAN4-1-21	Support Sleeve		1
22	TS-1550071	Flat Washer	M10	1
23	DSAN4-1-23	Fixed Shaft		1
24	DSAN4-1-24	Motor Bracket		1
25	DSAN4-1-25	Tension Block		1
26	DSAN4-1-26	Washer		2
27	DSAN4-1-27	Driving Wheel		1
28	DSAN4-1-28	Side Cover		1
29	DSAN4-1-29	Bottom Fixed Pin		1
30	DSAN4-1-30	Upper Fixed Pin		1
31	DSAN4-1-31	Chip Box		2
32	DSAN4-1-32	Upper Frame		1
33	DSAN4-1-33	Long Lead Screw		1
34	DSAN4-1-34	Guard		1
35	DSAN4-1-35	Belt Guiding Shaft		1
36	DSAN4-1-36	Lifting Plate		1
37	DSAN4-1-37	Hex Nut with Set Screw (includes #66)	M16-2.0	3
38	DSAN4-1-38	Graphite Platen		1
39	DSAN4-1-39	Storage Door		1
40	DSAN4-1-40	Column		1
41	DSAN4-1-41	Base		1
42	DSAN4-1-42	Plate		1
43	TS-1490031	Hex Cap Screw	M8-1.25x20	12
44	DSAN4-1-44	Adjustable Handle	M10-1.5x25	1
45	TS-1504041	Socket HD Cap Screw	M8-1.25x20	2
46	JEB-137	Hex Cap Screw	M8-1.25x100	1
47	F009489	Hex Cap Screw BO	M10-1.5x20	4
48	TS-1491031	Hex Cap Screw	M10-1.5x25	5
49	TS-1491031	Hex Cap Screw	M10-1.5x25	1
50	TS-2210451	Hex Cap Screw	M10-1.5x45	1
51	TS-1492041	Hex Cap Screw	M12-1.75x40	1
52	TS-1492021	Hex Cap Screw	M12-1.75x30	4
53	TS-1550061	Flat Washer	M8	1
54	TS-1540071	Hex Nut	M10-1.5	4
55	TS-1540081	Hex Nut	M12-1.75	1
56	TS-154010	Hex Nut	M16-2.0	1
57	DSAN4-1-57	Bolt	M4-0.7x10	4
58	TS-1503021	Socket HD Cap Screw	M6-1.0x10	1
59	TS-1503041	Socket HD Cap Screw	M6-1.0x16	4

Index No.	Part No.	Description	Size	Qty
60	TS-1504041	Socket HD Cap Screw	M8-1.25x20	2
61	TS-1504051	Socket HD Cap Screw	M8-1.25x25	2
62	TS-1505021	Socket HD Cap Screw	M10-1.5x20	3
63	DSAN4-1-63	Tracking Knob	M10-1.5x50	1
64	TS-1532032	Mach Screw, Pan HD, Phillips	M4-0.7x10	3
65	TS-1514021	Socket HD Flat Screw	M6-1.0x16	4
66	TS-1523021	Socket Set Screw	M6-1.0x8	3
67	TS-1523041	Socket Set Screw	M6-1.0x12	1
68	TS-1540061	Hex Nut	M8-1.25	2
69	F006048	C-Retaining Ring, Ext	22mm	1
70	TS-1550061	Flat Washer	M8	8
71	TS-1550071	Flat Washer	M10	5
72	TS-2360121	Flat Washer	M12	2
73	TS-155010	Flat Washer	M16	3
74	TS-1550061	Flat Washer	M8	3
75	TS-1550071	Flat Washer	M10	3
76	DSAN4-1-76	Big Washer	12	2
77	DSAN4-1-77	Locking Washer	M10	1
78	DSAN4-1-78	Flat Washer	M8	1
79	DSAN4-1-79	Short Sleeve		2
80	DSAN4-1-80	Long Sleeve		1
81	DSAN4-1-81	Handle Knob	M12	1
82	DSAN4-1-82	Handwheel Assembly	12x100mm	1
83	DSAN4-1-83	Adjustable Handle	M12	1
84	DSAN4-1-84	Spring Plunger	M10x17	2
85	DSAN4-1-85	Motor	4HP, 230V, 1PH	1
	DSAN4-1-85SC	Starting Capacitor (Not Shown)	CD60 300µF 300VAC	1
	DSAN4-1-85RC	Running Capacitor (Not Shown)	CBB60 60µF 450VAC	1
	DSAN4-1-85CF	Cooling Fan (Not Shown)	for 1PH motor	1
	DSAN4-1-85CS	Centrifugal Switch (Not Shown)		1
	DSAN4-1-85FC	Fan Cover (Not Shown)	for 3PH motor	1
	DSAN4-3-85	Motor	4HP, 230/460V, 3PH	1
	DSAN4-3-85CF	Cooling Fan (Not Shown)	for 3PH motor	1
	DSAN4-3-85FC	Fan Cover (Not Shown)	for 3PH motor	1
86	DSAN4-1-86	Handle Grip	22mm	1
87	DSAN4-1-87	Locking Block		1
88	DSAN4-1-88	Spring	D3x104mm	1
89	DSAN4-1-89	Spring	D3x38mm	1
90	DSAN4-1-90	Back Cover Plate		1
93	DSAN4-1-93	Bushing		2
96	DSAN4-1-96	Control Panel		1
97	TS-1534052	Mach Screw, Pan HD, Phillips	M6-1.0x16	4
98	TS-1550071	Flat Washer	M10	5
99	TS-2361101	Lock Washer	M10	4
100	TS-1491031	Hex Cap Screw	M10-1.5x25	4
101	DSAN4-1-101	Work Table		1
102	DSAN4-1-102	Connection Plate		1
103	DSAN4-1-103	Fixed Plate		1
104	TS-1540041	Hex Nut	M6-1.0	1
105	TS-1482031	Socket HD Cap Screw	M6-1.0x16	4
106	TS-1550041	Flat Washer	M6	1
107	TS-1504031	Socket HD Cap Screw	M8-1.25x16	1
108	TS-1550061	Flat Washer	M8	3
109	TS-1504051	Socket HD Cap Screw	M8x25	2
110	DSAN4-1-44	Adjustable Handle	M10-1.5x25	1
111	DSAN4-1-111	Baffle		1
112	TS-1550071	Flat Washer	M10	2
113	TS-1505021	Socket HD Cap Screw	M10-1.5x20	2
114	DSAN4-1-114	Nut		1
115	MPR10HV-59	Door Latch	MS720-2	1
116	DSAN4-1-116	1/2" Roller	Ø1/2"x4-1/2" L	1
117	DSAN4-1-117	3/4" Roller	Ø3/4"x4-1/2" L	1

Index No.	Part No.	Description	Size	Qty
118	DSAN4-1-118	2-1/2" Roller	Ø2-1/2"x4-1/2" L	1
119	DSAN4-1-119	2" Roller	Ø2"x 4-1/2" L	1
120	DSAN4-1-120	1-1/4" Roller	Ø1-1/4"x 4-1/2" L	1
121	DSAN4-1-121	1-1/2" Roller	Ø1-1/2"x 4-1/2" L	1
122	BB-608ZZ	Ball Bearing	.8x22x7mm w/2 shields	12
123	DSAN4-1-123	On/Off Switch	ZH-HD-2, 25A	1
124	DSAN4-1-124	Start Button	XB2-EA41	1
125	DSAN4-1-125	Select Switch	ZH-HC, UL(UL508) 1PH	1
	DSAN4-3-125	Select Switch	ZH-HC, UL(UL508) 3PH	1
126	DSAN4-1-126	Stop Button	XB2-EA42	1
127	DSAN4-1-127	Emergency Stop Button	XB2-ES542	1
128	DSAN4-1-128-1	Thermal Relay	RHN-10,15-20A/Set 15.2A	1
	DSAN4-3-128-230	Thermal Relay	RHN-10,9-12A/Set 10.5A	1
	DSAN4-3-128-460	Thermal Relay	RHN-10,4.5-6.3A/Set 5.5A	1
129	DSAN4-1-129	Grounding Terminal		1
130	DSAN4-1-130	Transformer	JCY-63 460 230/24V 50/60HZ 63VA	1
131	DSAN4-1-131	AC Contactor	CU-16 AC24V	1
132	DSAN4-1-132	1P Breaker	NB1-63 1P 1A (270VAC)	1
133	DSAN4-1-133-230	2P Breaker	NB1-63 2P 25A (270VAC)	1
	DSAN4-3-133	3P Breaker	NB1-63 3P 16A (480VAC)	1
134	DSAN4-1-134	Seat		1
135	DSAN4-1-135	Sliding Rod		1
136	DSAN4-1-136	Stop Plate		1
137	DSAN4-1-137	Adjustable Handle	M8x16	1
138	TS-1550061	Flat Washer	M8	5
139	TS-1504031	Socket HD Cap Screw	M8-1.25x16	6
140	755180	Abrasive Belt, set of 3	36/60/80 Grit	1
	JET-165	JET Logo (not shown)	165x68 mm	1
	LM000289	ID Label, DSAN4 (not shown)		1
	LM000296	Warning Label, DSAN4 (not shown)		1
	590800	Open-end wrench (not shown)	22/24mm	1
	TS-152705	Hex wrench (not shown)	4mm	1
	TS-152707	Hex wrench (not shown)	6mm	1
	TS-227D081	Hex wrench (not shown)	8mm	1