



SERVICE PARTS LIST

BULLETIN NO.
54-05-0800

SPECIFY CATALOG NO. AND SERIAL NO. WHEN ORDERING PARTS		REVISED BULLETIN	DATE
3 - STAGE HEAT GUN			Dec. 2000
CATALOG NO. 8986-20	STARTING SERIAL NUMBER 193A - 1001	WIRING INSTRUCTION See Reverse Side	

EXAMPLE:

00	0
----	---

 Component Parts (Small #) Are Included
 When Ordering The Assembly (Large #).

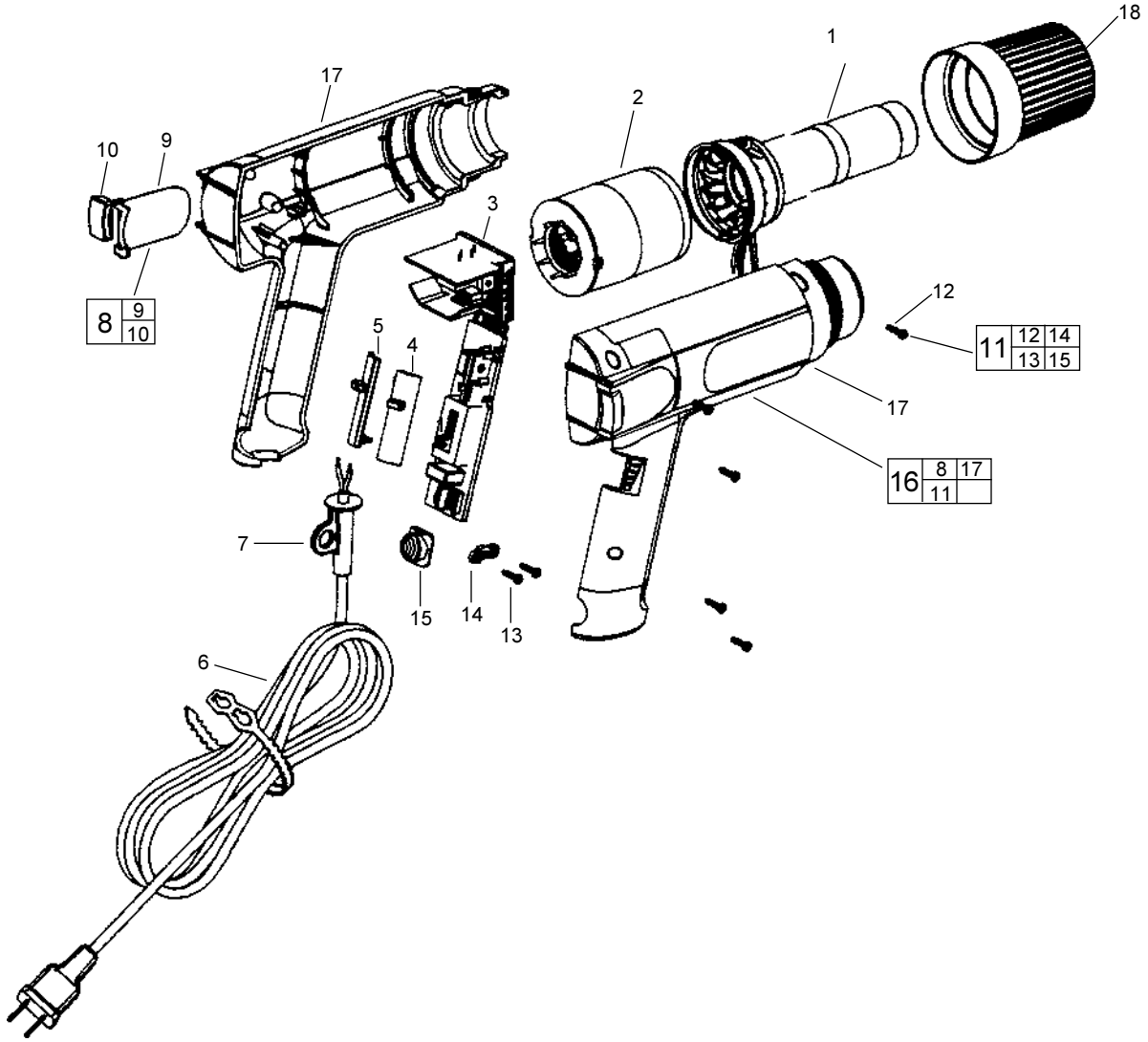
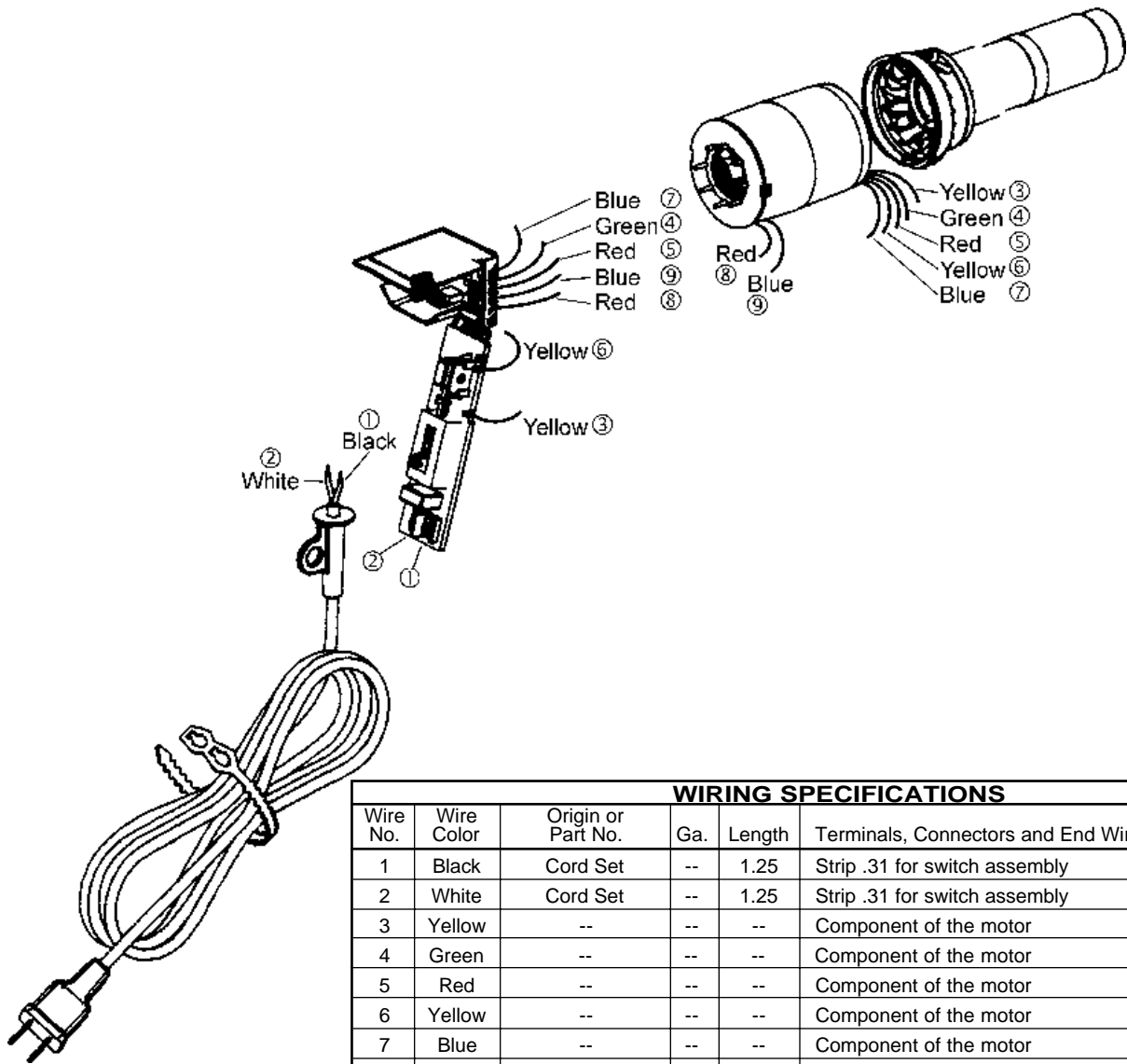


FIG.	PART NO.	DESCRIPTION OF PART	QTY.
1	14-20-0465	Heating Element	(1)
2	14-50-0635	Motor	(1)
3	23-66-2045	Switch Assembly	(1)
4	31-84-0010	Switch Cap - Temperature (Red)	(1)
5	31-84-0015	Switch Cap - Power (Blue)	(1)
6	22-64-0830	Cord	(1)
7	44-76-0165	Strain Relief	(1)
8	14-46-8988	Air Filter Kit	(1)
9	-----	Air Filter	(2)
10	-----	Rubber Pad	(2)

FIG.	PART NO.	DESCRIPTION OF PART	QTY.
11	14-46-8986	Repair Kit	(1)
12	-----	Housing Screws	(5)
13	-----	Cord Screws	(2)
14	-----	Cord Clamp	(1)
15	-----	Rubber Support	(1)
16	14-38-0565	Housing Kit	(1)
17	-----	Housing Halves	(2)
18	31-55-0165	Nose Guard	(1)
--	12-20-8986	Service Nameplate Kit (not shown)	(1)
--	-----	Milwaukee Label (not shown)	(1)
--	-----	Caution Label (not shown)	(1)
--	-----	Nameplate (not shown)	(1)



WIRING SPECIFICATIONS					
Wire No.	Wire Color	Origin or Part No.	Ga.	Length	Terminals, Connectors and End Wire Preparation
1	Black	Cord Set	--	1.25	Strip .31 for switch assembly
2	White	Cord Set	--	1.25	Strip .31 for switch assembly
3	Yellow	--	--	--	Component of the motor
4	Green	--	--	--	Component of the motor
5	Red	--	--	--	Component of the motor
6	Yellow	--	--	--	Component of the motor
7	Blue	--	--	--	Component of the motor
8	Red	--	--	--	Component of the motor
9	Blue	--	--	--	Component of the motor

BULK LEAD WIRE - BULLETIN 58-01-0003

