



SERVICE PARTS LIST

BULLETIN NO.
54-02-0550

SPECIFY CATALOG NO. AND SERIAL NO. WHEN ORDERING PARTS		REVISED BULLETIN	DATE
5 TON HAND CHAIN HOISTS			Oct. '90
CATALOG NO.	9518, 9519	DATE CODE	AC
		WIRING INSTRUCTION	None

00/0

EXAMPLE:
Component Parts (Small #) Are Included
When Ordering The Assembly (Large #).

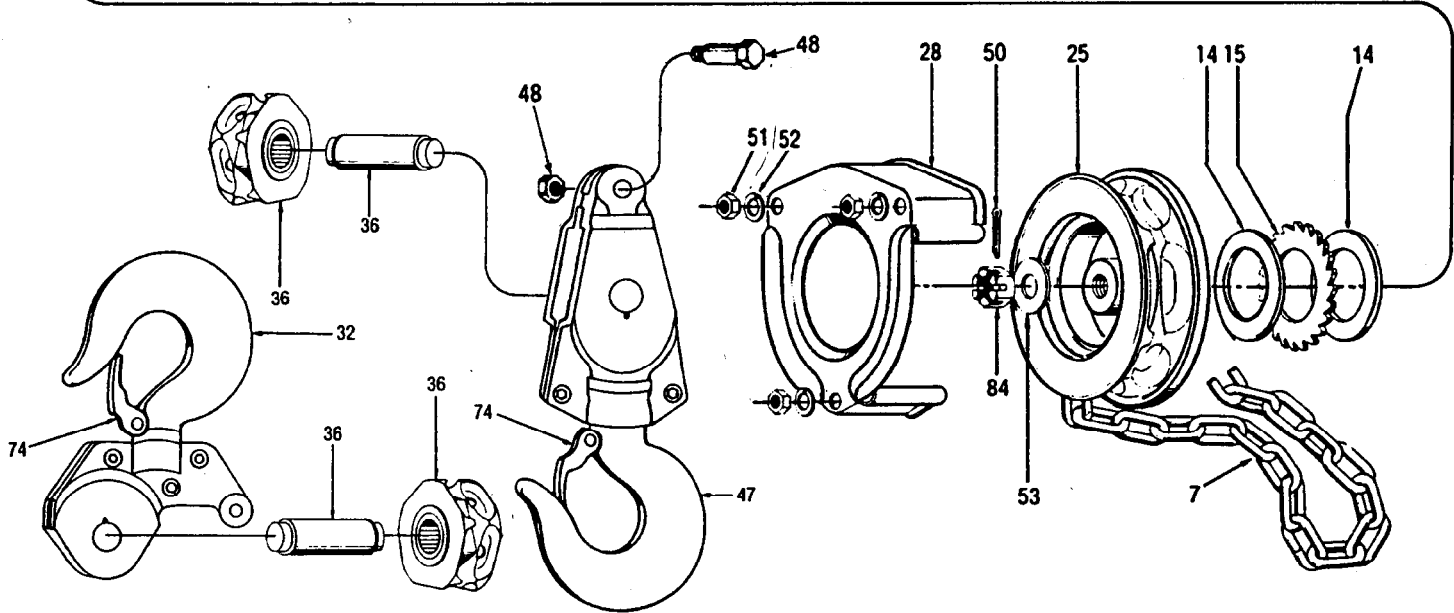
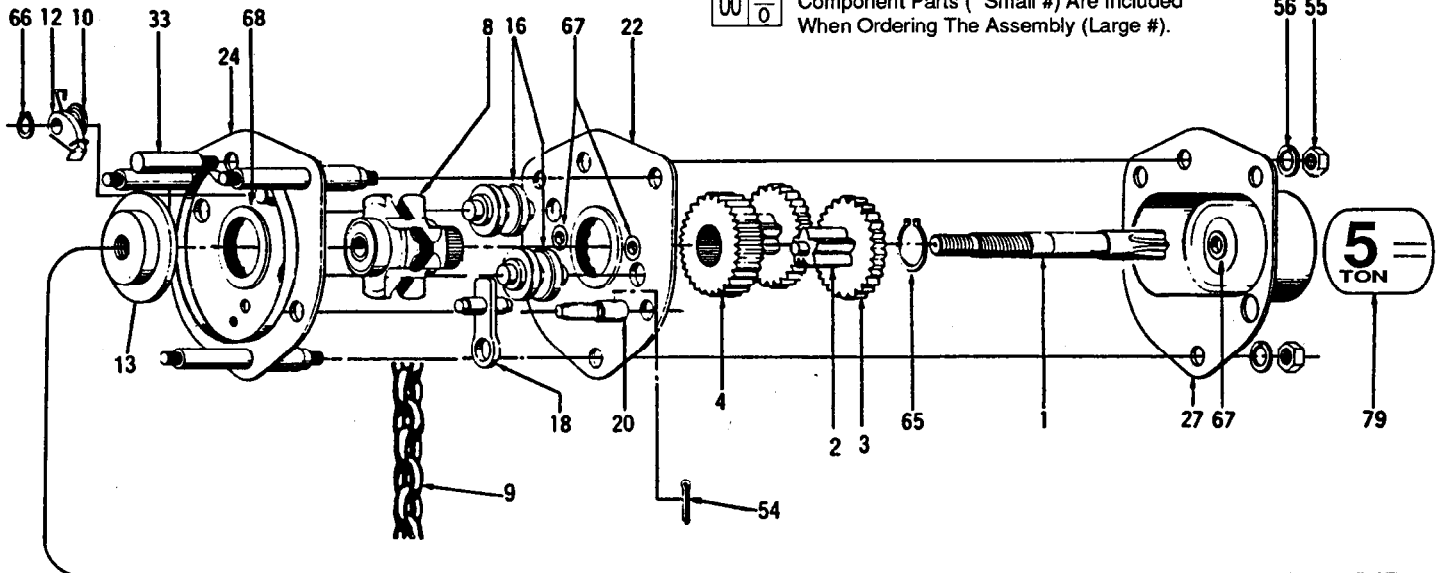


FIG.	PART NO.	DESCRIPTION OF PART	QTY.	FIG.	PART NO.	DESCRIPTION OF PART	QTY.
1	36-66-4580	Pinion Shaft	(1)	50,51,52,53,54,	14-47-0740	Hoist Fastening Repair Kit	(1)
2,3	32-60-2450	Pinion Gear	(2)	55,56,65,84	42-24-0470	Pinion Bearing	(4)
4	32-60-2500	Load Gear	(1)	67	42-24-0520	Sheave Bearing	(2)
7	42-60-0540	17' Hand Chain (9518)	(1)	74	14-47-0790	Hoist Latch Kit	(1)
	42-60-0560	38' Hand Chain (9519)	(1)	16,18,20	14-47-0840	Chain Guide Kit	(1)
8	45-11-0170	Load Sheave	(1)	22	44-66-5810	Gear Side Plate	(1)
9	42-60-0520	32' 9" Load Chain (9518)	(1)	24	44-66-5860	Wheel Side Plate	(1)
	42-60-0530	62' 3" Load Chain (9519)	(1)	25	45-94-0355	Handwheel	(1)
10,12,66	14-47-0650	Pawl Kit	(1)	27	42-92-0880	Gear Cover	(1)
13	43-78-0425	Disc Hub	(1)	33	44-60-1240	Yoke Pin	(1)
14	43-06-0620	Friction Disc	(2)	79		Nameplate	(1)
15	44-84-0290	Ratchet	(1)	36	14-76-0030	Idle Sheave Assembly	(2)
28	42-92-0830	Handwheel Cover	(1)				
32,74	43-74-0185	Top Hook	(1)				
47,48,74	14-36-0240	Bottom Hook Assembly	(1)				
48	14-03-0130	Chain Fastening Bolt Assembly	(1)				

MILWAUKEE ELECTRIC TOOL CORPORATION
13135 W. LISBON RD., BROOKFIELD, WI 53005