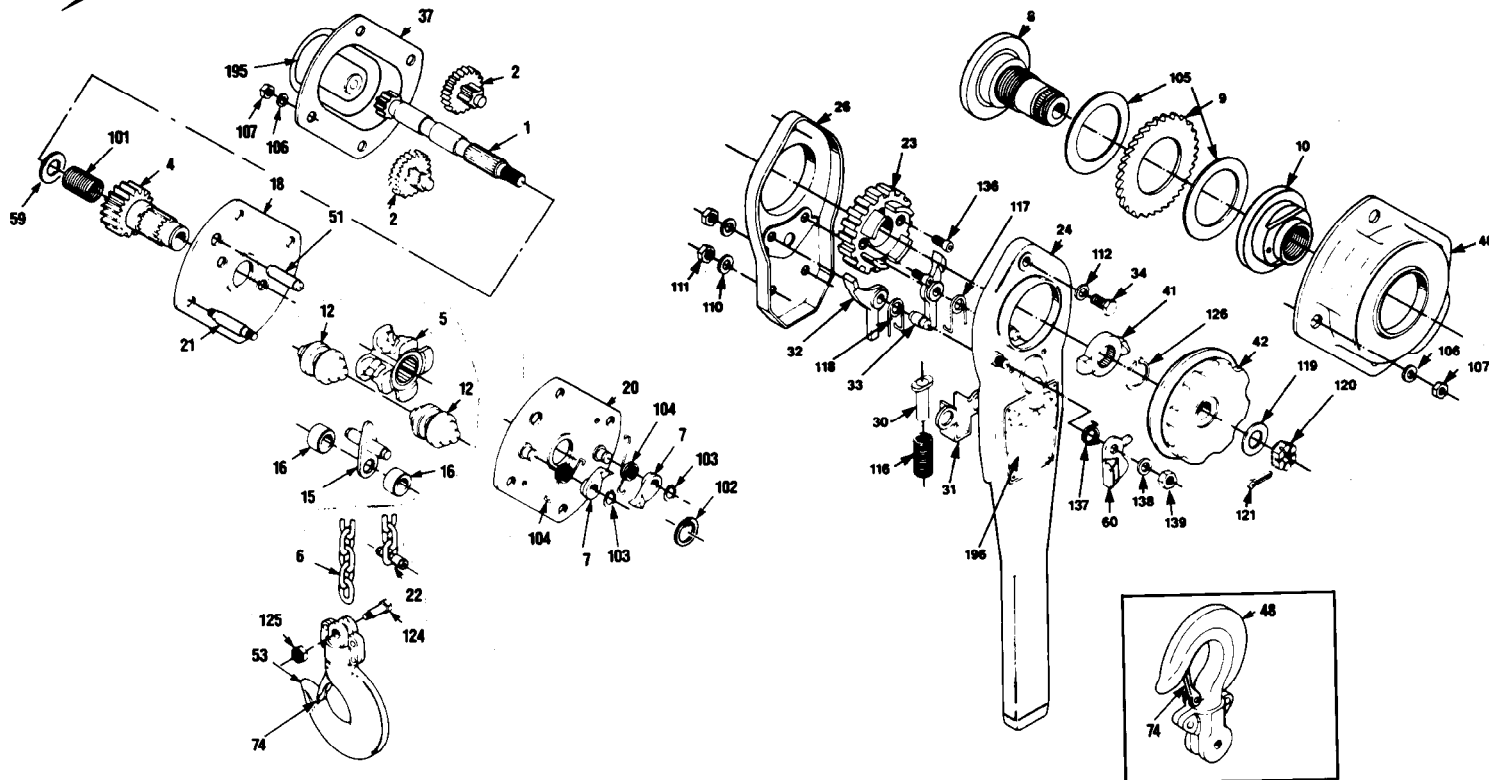




SERVICE PARTS LIST

**BULLETIN NO.
54-02-0800**

| | | | |
|--|-----------------------|-----------------------------------|----------|
| SPECIFY CATALOG NO. AND SERIAL NO. WHEN ORDERING PARTS | | REVISED BULLETIN | DATE |
| 3 TON LEVER HOIST | | | Oct. '86 |
| CATALOG NO. 9545, 9546, 9547 | DATE CODE 4-86 | WIRING INSTRUCTION NONE | |



| FIG. | PART NO. | DESCRIPTION OF PART | NO. REQ. |
|------|------------|--|----------|
| 1 | 14-47-0480 | Pinion Shaft (Incl. Fig. 59, 101) | (1) |
| 2 | 32-60-2285 | Pinion Gear | (2) |
| 4 | 14-47-0230 | Output Gear Kit (Incl. Fig. 102) | (1) |
| 5 | 45-11-0080 | Load Sheave | (1) |
| 7 | 14-47-0310 | Pawl Kit (Incl. Fig. 9, 103) | (1) |
| 8 | 43-78-0375 | Disc Hub | (1) |
| 10 | 45-88-8065 | Disc Nut Washer | (1) |
| 12 | 14-47-0510 | Chain Guide Kit | (1) |
| 15 | 14-47-0580 | Chain Stripper Assembly (Incl. Fig. 16) | (1) |
| 18 | 44-66-5630 | Gear Side Plate | (1) |
| 20 | 44-66-5645 | Handle Side Plate | (1) |
| 21 | 14-47-0560 | Stay Bolt Kit (Incl. Fig. 106, 107) | (4) |
| 22 | 45-52-2060 | Stop | (1) |
| 23 | 14-47-0390 | Disc Nut Kit (Incl. Fig. 136) | (1) |
| 24 | 14-47-0440 | Operating Handle Kit (Incl. Fig. No. 26, 110, 111, 112, 196, 34) | (1) |
| 31 | 14-47-0400 | Spring Shaft Kit (Incl. Fig. 30, 116) | (1) |
| 33 | 14-47-0380 | Handle Pawl Kit (Incl. Fig. 32, 117, 118) | (1) |
| 37 | 42-92-0635 | Gear Cover | (1) |
| 40 | 42-92-0650 | Ratchet Cover | (1) |
| 41 | 14-47-0370 | Parts Kit (Incl. Fig. 119, 120, 121, 126) | (1) |
| 42 | 43-98-0335 | Free Chain Knob | (1) |
| 48 | 14-36-0080 | Top Hook Assembly (Incl. Fig. 74) | (1) |
| 51 | 44-60-0960 | Yoke Pin | (1) |
| 53 | 14-36-0120 | Bottom Hook Assembly (Incl. Fig. 74, 124, 125) | (1) |
| 60 | 14-47-0410 | Free Chain Lever Kit (Incl. Fig. 137, 138, 139) | (1) |
| 74 | 14-47-0260 | Latch Kit | (2) |
| 105 | 14-47-0340 | Brake Kit (Incl. Fig. 103, 104) | (1) |
| 124 | 14-03-0080 | Chain Fastening Bolt Assembly (Incl. Fig. 125) | (1) |
| 195 | 10-37-0010 | Caution Label | (1) |

| FIG. | PART NO. | DESCRIPTION OF PART | NO. REQ. |
|------|------------|-------------------------|----------|
| | | (For Catalog No. 9545) | |
| 196 | 12-40-0110 | Nameplate | (1) |
| 6 | 42-60-0310 | 3 Ton 5 Ft. Lift Chain | (1) |
| | | (For Catalog No. 9546) | |
| 196 | 12-40-0115 | Nameplate | (1) |
| 6 | 42-60-0315 | 3 Ton 10 Ft. Lift Chain | (1) |
| | | (For Catalog No. 9547) | |
| 196 | 12-40-0120 | Nameplate | (1) |
| 6 | 42-60-0320 | 3 Ton 20 Ft. Lift Chain | (1) |