



# SERVICE PARTS LIST

**BULLETIN NO.**  
**54-02-1000**

SPECIFY CATALOG NO. AND SERIAL NO. WHEN ORDERING PARTS		REVISED BULLETIN	DATE
<b>500 LB. ELECTRIC CHAIN HOIST</b>			Oct. '90
CATALOG NO.	9550	SERIAL NUMBER	4-86
		WIRING INSTRUCTION	58-01-0975

00 0

**EXAMPLE:**  
Component Parts (Small #) Are Included  
When Ordering The Assembly (Large #).

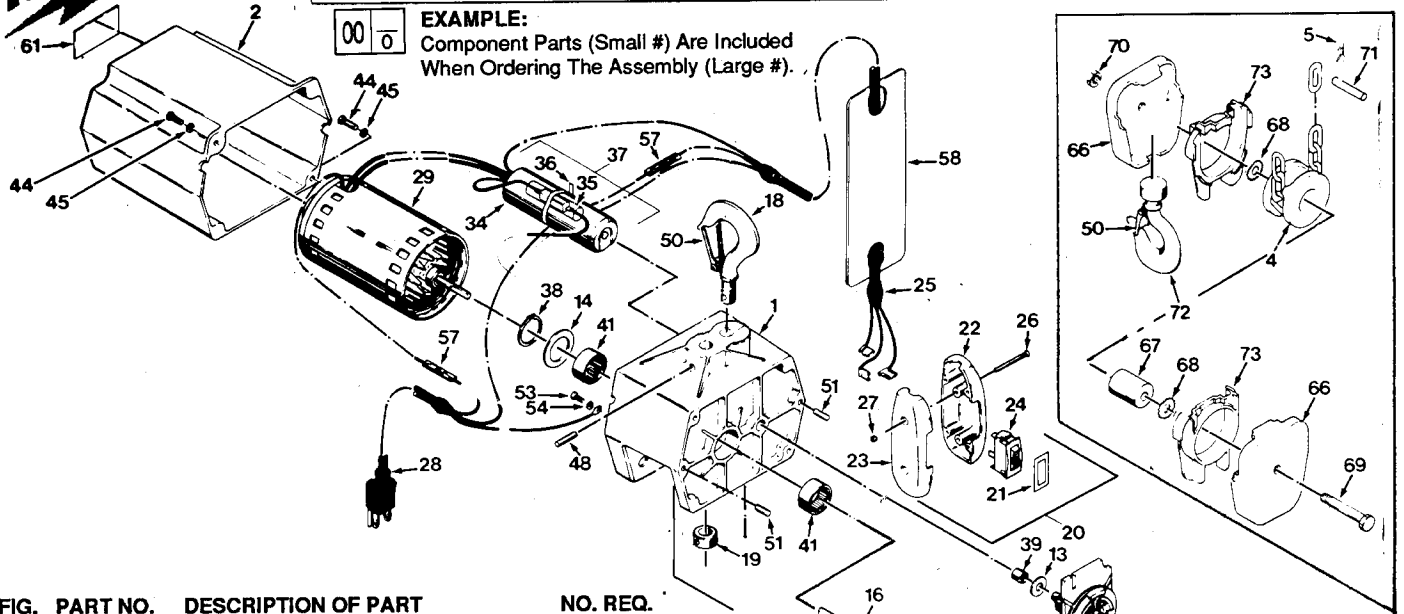


FIG.	PART NO.	DESCRIPTION OF PART	NO. REQ.
1	43-40-0210	Suspension Frame	(1)
2	42-92-0655	Control Cover	(1)
3	42-92-0660	Transmission Cover	(1)
4	45-11-0090	Sheave	(1)
5	42-70-0240	Clip	(1)
6	40-50-8080	Spring	(2)
7	32-60-2290	High Speed Pinion Gear	(1)
8	32-60-2295	High Speed Cluster Gear	(1)
9	32-60-2300	Intermediate Cluster Gear	(1)
10	32-06-0010	Load Brake Gear	(1)
11	14-04-0010	Brake Assembly	(1)
12	32-60-2305	Output Gear	(1)
13	45-88-8070	Thrust Washer	(4)
14	45-88-8075	Thrust Washer	(6)
15	36-74-0010	Sheave Shaft	(1)
16	42-90-0230	Drive Coupling	(1)
17	42-60-0335	Chain	(1)
18	14-36-0150	Hook with Latch (Incl. Fig. 50)	(2)
19	42-76-0420	Hook Collar	(1)
20	23-37-0130	Pushbutton Station Assembly (Incl. 21, 22, 23, 24, 25, 26, 27)	(1)
21	10-37-0020	Up-Down Label	(1)
22	22-12-0210	Pushbutton Enclosure	(1)
23	22-12-0220	Pushbutton Enclosure	(1)
24	23-66-1530	Rocker Switch	(1)
25	22-60-2910	Pushbutton Cord Assembly	(1)
26	06-81-3350	#4-48 x 1-1/4 Oval Head Screw	(2)
27	06-57-1000	Flex Lock Nut #4-48 Locknut	(2)
28	22-64-2840	Power Cord Assembly	(1)
29	23-30-0200	Motor	(1)
30	43-56-0420	Chain Guide	(1)
31	06-81-9130	10 x 24 x 1-1/4 Round Head Screw	(4)
32	23-66-1535	Load Switch	(1)
33	31-92-0250	Load Switch Paddle	(1)
34	22-33-0310	Capacitor	(1)
35	22-89-0200	Thermal Fuse	(1)
36	45-56-0220	Tie Strap	(1)
37	22-33-0315	Capacitor & Thermal Assy. (Incl. 34, 35, 36)	(1)
38	34-60-2460	Retaining Ring	(2)
39	42-24-0405	Bearing	(4)
41	02-04-5070	Load Bearing	(2)
42	06-42-3755	Woodruff Key	(2)
43	06-42-3760	Woodruff Key	(1)
44	06-81-5695	10-24 x 5/8 Pan Head Screw	(4)
45	06-97-3500	#10 Split Ring Lockwasher	(4)
48	44-60-0980	Hook Pin	(2)
49	44-60-0990	Roll Pin	(1)
50	14-47-0570	Latch Kit	(2)
51	06-65-3625	3/16 x 1/2 Dowel Pin	(2)
52	42-52-0360	Cap	(2)
53	06-81-4570	8-32 x 3/8 Phillips Round Hd. Screw	(1)
54	45-88-8080	#8 Flat Washer	(1)
56	22-56-0550	Pigtail Connector	(2)
57	22-56-0545	Connector	(2)

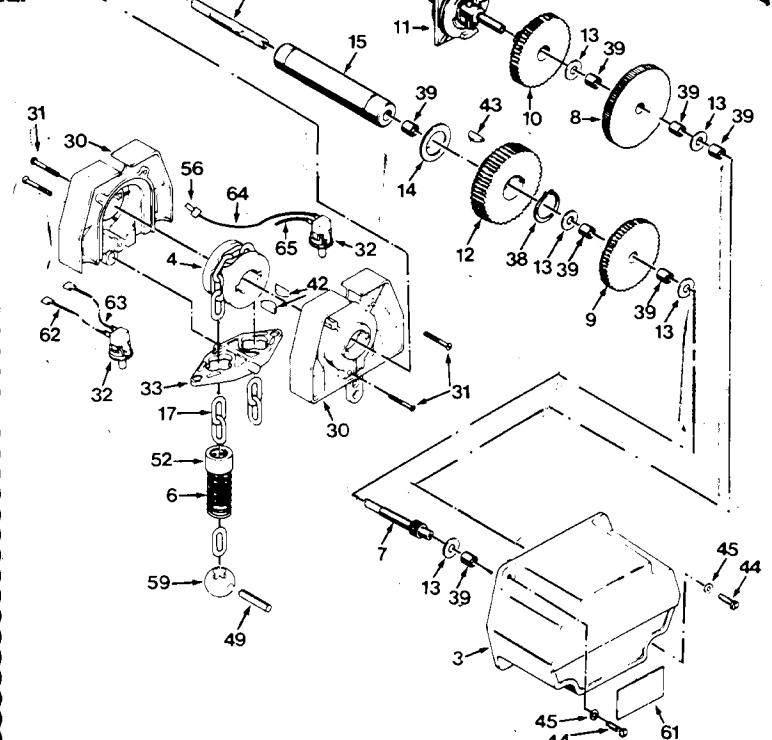


FIG.	PART NO.	DESCRIPTION OF PART	NO. REQ.
58	10-98-6570	Warning Label	(1)
59	02-02-2010	End Ball	(1)
61	10-37-0030	Capacity Label	(2)
62	23-94-5810	Jumper Wire Black	(1)
63	23-94-5815	Jumper Wire Orange	(1)
64	23-94-5820	Jumper Wire White	(1)
65	23-94-5825	Jumper Wire Blue	(1)
66	42-28-0270	Bottom Block	(2)
67	45-08-0270	Idler Shaft	(1)
68	06-97-1020	5/16 Star Washer	(2)
69	06-75-0350	5/16-24 x 2 Hex Hd. Cap Screw	(1)
70	06-57-5050	5/16-24 Locknut	(1)
71	44-60-1020	5/16-24 Grooved Pin	(1)
72	14-36-0160	Hook with Latch (Incl. 50)	(1)
73	43-56-0430	Idler Guide	(2)

**MILWAUKEE ELECTRIC TOOL CORPORATION**  
13135 W. LISBON RD., BROOKFIELD, WI 53005