



MODEL 96-110

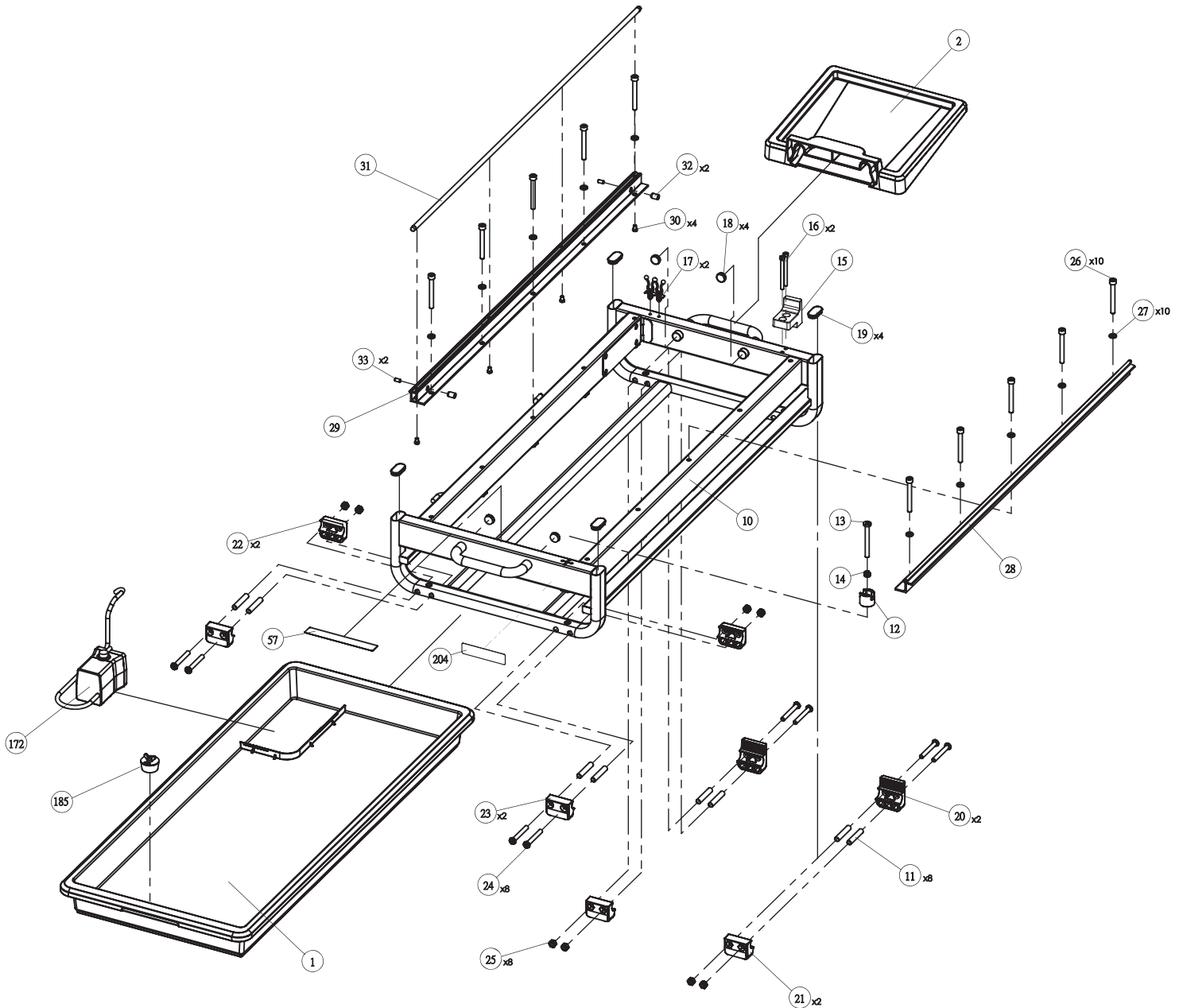
10 IN TILE SAW

WTS-9

PART #:DPEC005561

DATE: 09-09-2019

REVISED: 10-25-2019

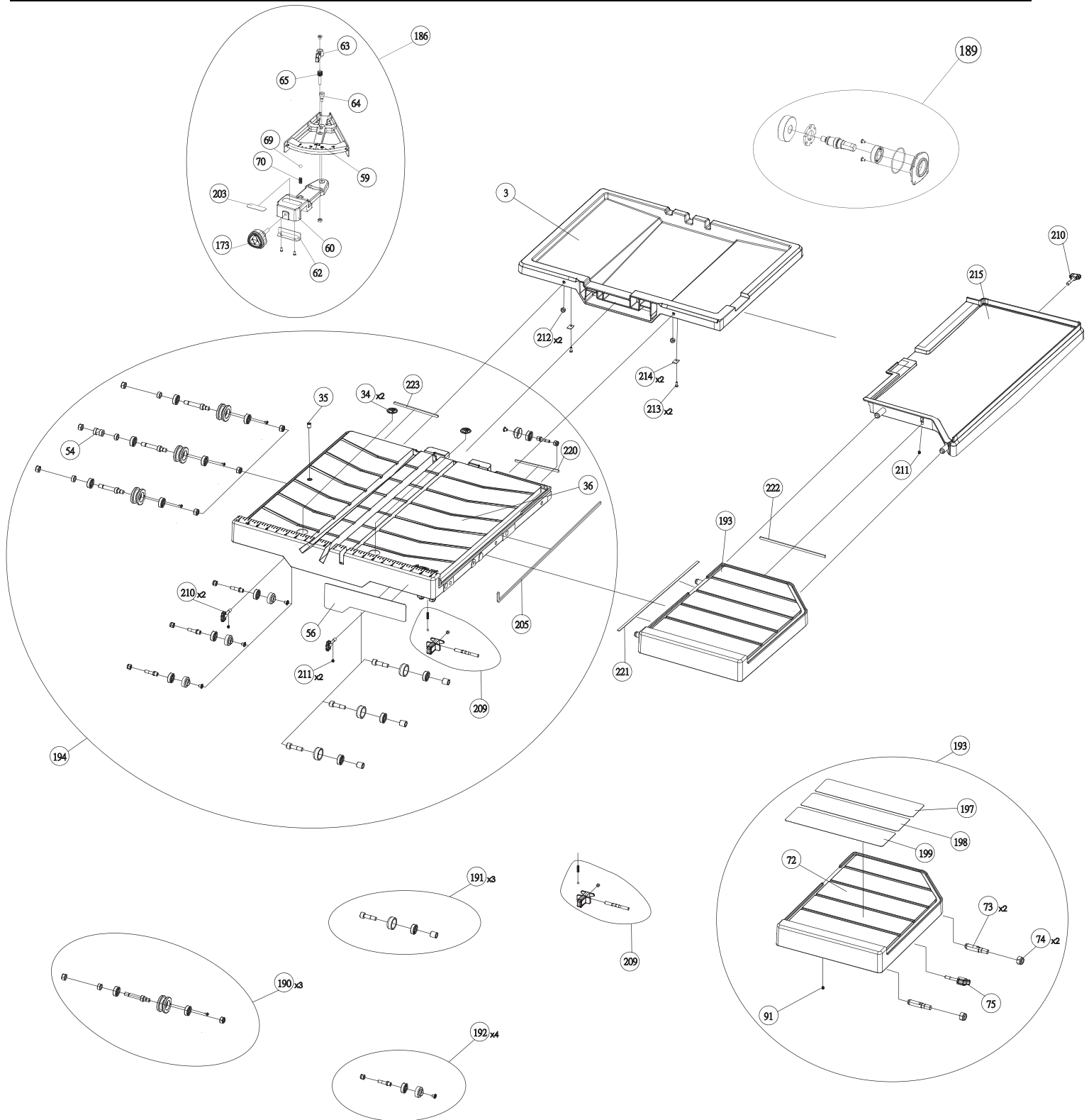




**WTS-9**  
PART #: DPEC005561  
DATE: 09-09-2019  
REVISED: 10-25-2019

# MODEL 96-110

# 10 IN TILE SAW

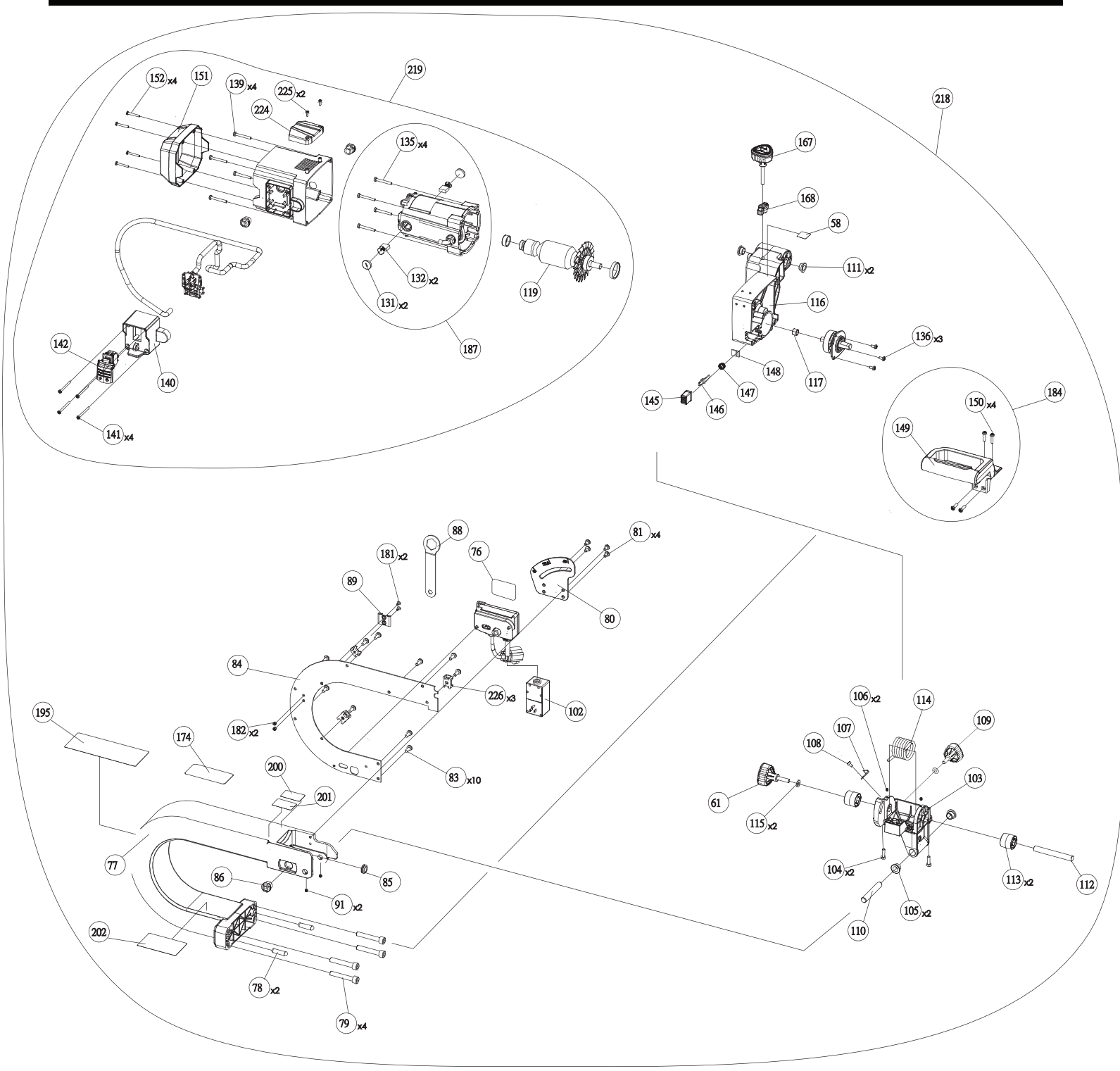




**WTS-9**  
PART #:DPEC005561  
DATE: 09-09-2019  
REVISED: 10-25-2019

# MODEL 96-110

# 10 IN TILE SAW





## REPLACEMENT PARTS

| ITEM # | DELTA PART # | DESCRIPTION                     | QTY | ITEM # | DELTA PART # | DESCRIPTION                            | QTY |
|--------|--------------|---------------------------------|-----|--------|--------------|--|-----|
| 1      | DPEC005998   | Water Tray                      | 1   | 82     | DPEC003915   | Sleeve                                 | 2   |
| 2      | DPEC004774   | Lower Spill Tray                | 1   | 83     | DPEC005605   | Torx Screw                             | 10  |
| 3      | DPEC005288   | Upper Spill Tray                | 1   | 84     | DPEC003921   | Arm Cover                              | 1   |
| 4      | DPEC003869   | Drain Plug Assembly             | 1   | 85     | DPEC003922   | Junction Ring                          | 1   |
| 5      | DPEC003870   | Chain                           | 1   | 86     | DPEC003923   | Strain Relief                          | 3   |
| 6      | DPEC005595   | Flat Washer                     | 1   | 87     | DPEC003926   | Water Hose - Head                      | 1   |
| 7      | DPEC003872   | Torx Plastic Self Tapping Screw | 1   | 88     | DPEC003927   | Blade Wrench                           | 1   |
| 8      | DPEC005453   | Torx Screw                      | 1   | 89     | DPEC003928   | Blade Wrench Storage Bracket           | 1   |
| 9      | DPEC005454   | Wing Nut                        | 1   | 91     | DPEC005606   | Set Screw                              | 3   |
| 10     | DPEC003875   | Main Frame Assembly             | 1   | 92     | DPEC004754   | Torx Screw                             | 2   |
| 11     | DPEC003876   | Foot Pad Sleeve                 | 8   | 93     | DPEC003930   | Torx Plastic Self Tapping Screw        | 2   |
| 12     | DPEC003877   | Front Table Stop Bracket        | 1   | 94     | DPEC005626   | Torx Screw                             | 2   |
| 13     | DPEC003878   | Front Table Stop Screw          | 1   | 95     | DPEC003565   | Cable Clamp                            | 1   |
| 14     | DPEC003879   | Table Stop Bracket Spring       | 1   | 96     | DPEC003932   | Electrical Box Cover                   | 1   |
| 15     | DPEC003880   | Rear Stop Bracket               | 1   | 97     | DPEC003933   | Electrical Box                         | 1   |
| 16     | DPEC005596   | Hex Socket Screw                | 2   | 98     | DPEC005466   | M4 Hex Wrench                          | 1   |
| 17     | DPEC003882   | Twist Clip                      | 2   | 99     | DPEC003934   | Pump Power Supply                      | 1   |
| 18     | DPEC003543   | Flat Tube Cap                   | 4   | 100    | DPEC005469   | Tooth Washer                           | 2   |
| 19     | DPEC003620   | Ellipse Tube Cap                | 4   | 101    | DPEC003935   | Power Cord                             | 1   |
| 20     | DPEC003885   | Rear Stop Foot Pad              | 2   | 102    | DPEC003936   | Circuit Breaker                        | 1   |
| 21     | DPEC003886   | Rear Foot Pad                   | 2   | 103    | DPEC005987   | Pivot Bracket                          | 1   |
| 22     | DPEC003887   | Front Locating Foot Pad         | 2   | 104    | DPEC005607   | Hex Screw                              | 2   |
| 23     | DPEC003888   | Front Foot Pad                  | 2   | 105    | DPEC003938   | Bushing                                | 2   |
| 24     | DPEC005597   | Torx Screw                      | 8   | 106    | DPEC005608   | Fixed Screw                            | 2   |
| 25     | DPEC005598   | Nylock Nut                      | 8   | 107    | DPEC003939   | Pointer                                | 1   |
| 26     | DPEC005599   | Hex Socket Screw                | 10  | 108    | DPEC005609   | Torx Screw                             | 1   |
| 27     | DPEC004076   | Flat Washer                     | 10  | 109    | DPEC003940   | Bevel Scale Knob                       | 1   |
| 28     | DPEC003893   | Right Rail Bracket              | 1   | 110    | DPEC003941   | Rotation Shaft                         | 1   |
| 29     | DPEC003894   | Left Rail Bracket               | 1   | 111    | DPEC003942   | Bushing                                | 2   |
| 30     | DPEC005600   | Torx Screw                      | 4   | 112    | DPEC003943   | Arm Pivot Shaft                        | 1   |
| 31     | DPEC003896   | Rod Rail                        | 1   | 113    | DPEC003944   | Spring Sleeve                          | 2   |
| 32     | DPEC003897   | Left Rail Insert                | 2   | 114    | DPEC003945   | Pivot Spring                           | 1   |
| 33     | DPEC005458   | Set Screw                       | 2   | 115    | DPEC005610   | Flat Washer                            | 2   |
| 34     | DPEC003899   | Hand Off Label                  | 2   | 116    | DPEC005988   | Gear Box                               | 1   |
| 35     | DPEC005601   | Set Screw                       | 1   | 117    | DPEC003439   | Needle Bearing                         | 1   |
| 36     | DPEC005984   | Worktable                       | 1   | 119    | DPEC005989   | Armature Bearing Assembly              | 1   |
| 54     | DPEC003919   | Bushing                         | 1   | 120    | DPEC003950   | Adjustable hose Assembly               | 1   |
| 56     | DPEC005409   | Table Logo Label                | 1   | 121    | DPEC003951   | Splash Guard Assembly                  | 1   |
| 57     | DPEC003752   | Knob Lock - Label               | 1   | 131    | DPEC003961   | Carbon Brush Cap                       | 2   |
| 58     | DPEC005401   | Depth Sotp Adjust - Label       | 1   | 132    | DPEC003962   | Carbon Brush                           | 2   |
| 59     | DPEC003924   | Miter Gage Fence                | 1   | 135    | DPEC005635   | Torx screw                             | 4   |
| 60     | DPEC003925   | Miter Gage Base                 | 1   | 136    | DPEC005990   | Torx Plastic Self-Tapping Screw        | 3   |
| 61     | DPEC003871   | Position Height Knob            | 1   | 139    | DPEC005655   | TORX SELF-TAPPING SCREW                | 4   |
| 62     | DPEC003873   | Miter Gage Wedge Plate          | 1   | 140    | DPEC003968   | Switch Box                             | 1   |
| 63     | DPEC003874   | Miter Gage Lock Knob            | 1   | 141    | DPEC003969   | Torx Plastic Self Tapping Screw        | 4   |
| 64     | DPEC003881   | Miter Gage Pivot Pin            | 1   | 142    | DPEC003970   | Switch                                 | 1   |
| 65     | DPEC003889   | Miter Gage Fence Screw          | 1   | 145    | DPEC005991   | Spindle Lock Burron                    | 1   |
| 69     | DPEC003890   | Steel Ball                      | 1   | 146    | DPEC003974   | Spindle Lock                           | 1   |
| 70     | DPEC003891   | Steel Ball Spring               | 1   | 147    | DPEC003975   | Compression Spring for Spindle Lock    | 1   |
| 71     | DPEC005480   | Allen Wrench                    | 1   | 148    | DPEC003976   | Felt Washer                            | 1   |
| 72     | DPEC005985   | Extension Wing                  | 1   | 149    | DPEC003977   | Handle                                 | 1   |
| 73     | DPEC003895   | Locating Pin                    | 2   | 150    | DPEC005613   | Torx screw                             | 4   |
| 74     | DPEC005602   | Nylock Nut                      | 2   | 151    | DPEC003978   | Rear Motor Housing                     | 1   |
| 75     | DPEC003898   | Extension Wing Knob Assembly    | 1   | 152    | DPEC003979   | Torx Plastic Self-Tapping Screw M4X30L | 4   |
| 76     | DPEC005410   | Delta Logo Label                | 1   | 153    | DPEC003980   | Flexible Water Hose                    | 2   |
| 77     | DPEC005986   | Arm Support                     | 1   | 154    | DPEC003981   | Connector                              | 1   |
| 78     | DPEC003904   | Dowel Pin                       | 2   | 156    | DPEC005614   | Hex Socket Screw                       | 2   |
| 79     | DPEC005603   | Hex Socket Screw                | 4   | 157    | DPEC003983   | Splash Guard                           | 1   |
| 80     | DPEC003911   | Bevel Scale                     | 1   | 158    | DPEC003984   | Rear Splash Guard                      | 1   |
| 81     | DPEC005604   | Torx Screw                      | 4   | 159    | DPEC003985   | Special Screw                          | 4   |

\*\* = Item is standard hardware and can be purchased in local hardware or home improvement stores.

## REPLACEMENT PARTS

| ITEM # | DELTA PART # | DESCRIPTION                          | QTY | ITEM # | DELTA PART # | DESCRIPTION                  | QTY |
|--------|--------------|--------------------------------------|-----|--------|--------------|------------------------------|-----|
| 160    | DPEC005615   | Flat Washer                          | 5   | 225    | DPEC003930   | Torx Self Tapping Screw      | 2   |
| 161    | DPEC005616   | Torx screw                           | 1   | 226    | DPEC005560   | Tie Mount                    | 3   |
| 162    | DPEC005992   | Inner Blade Guard                    | 1   | 227    | DPEC005623   | Hose Fixing Plate            | 1   |
| 163    | DPEC005993   | Outer Blade Guard                    | 1   | 228    | DPEC005593   | Torx Head Self-Tapping Screw | 2   |
| 164    | DPEC003988   | Wire Fixing Clamp                    | 1   |        |              |                              |     |
| 165    | DPEC003989   | Shoulder Screw                       | 1   |        |              |                              |     |
| 166    | DPEC005617   | Torx Self Tapping Screw              | 4   |        |              |                              |     |
| 167    | DPEC003990   | Depth of Cut Knob                    | 1   |        |              |                              |     |
| 168    | DPEC003991   | Plastic Wing Lock Nut                | 1   |        |              |                              |     |
| 169    | DPEC003992   | Blade Inner Flange                   | 1   |        |              |                              |     |
| 170    | DPEC003993   | Blade Outer Flange                   | 1   |        |              |                              |     |
| 171    | DPEC005994   | Blade Nut                            | 1   |        |              |                              |     |
| 172    | DPEC003995   | Pump Motor Assembly                  | 1   |        |              |                              |     |
| 173    | DPEC003996   | Miter Gage Lock Knob                 | 1   |        |              |                              |     |
| 174    | DPEC005406   | Specifications Label                 | 1   |        |              |                              |     |
| 178    | DPEC003998   | E-ring                               | 1   |        |              |                              |     |
| 179    | DPEC003999   | Water Hose                           | 1   |        |              |                              |     |
| 180    | DPEC004000   | Water Valve                          | 1   |        |              |                              |     |
| 181    | DPEC005465   | Flat Head Torx Screw                 | 2   |        |              |                              |     |
| 182    | DPEC005618   | Nylock Nut                           | 2   |        |              |                              |     |
| 183    | DPEC004001   | Blade Guard Lock Knob                | 1   |        |              |                              |     |
| 184    | DPEC004082   | Handle Assembly                      | 1   |        |              |                              |     |
| 185    | DPEC003769   | Drain Plug Assembly                  | 1   |        |              |                              |     |
| 186    | DPEC004014   | Fence Assembly                       | 1   |        |              |                              |     |
| 187    | DPEC004085   | Motor Housing Assembly               | 1   |        |              |                              |     |
| 188    | DPEC005995   | Hose Assembly                        | 1   |        |              |                              |     |
| 189    | DPEC005996   | Drive Shaft Assembly                 | 1   |        |              |                              |     |
| 190    | DPEC004088   | Roller Wheel Assembly                | 3   |        |              |                              |     |
| 191    | DPEC004089   | Guide Wheel Assembly                 | 3   |        |              |                              |     |
| 192    | DPEC004090   | Fixed Wheel Assembly                 | 4   |        |              |                              |     |
| 193    | DPEC005580   | Extension Wing Assembly              | 1   |        |              |                              |     |
| 194    | DPEC005997   | Worktable Assembly                   | 1   |        |              |                              |     |
| 195    | DPEC005407   | Warning Label                        | 1   |        |              |                              |     |
| 197    | DPEC005412   | Cutting Capacity Label               | 1   |        |              |                              |     |
| 198    | DPEC005413   | Bevel Description Label              | 1   |        |              |                              |     |
| 199    | DPEC005414   | Snake Pipe Label                     | 1   |        |              |                              |     |
| 200    | DPEC005399   | Bevel Label                          | 1   |        |              |                              |     |
| 201    | DPEC005400   | Plunge Label                         | 1   |        |              |                              |     |
| 202    | DPEC005408   | Lift Warning Label                   | 1   |        |              |                              |     |
| 203    | DPEC005404   | Miter Gauge Label                    | 1   |        |              |                              |     |
| 204    | DPEC003751   | Table Lock Label                     | 1   |        |              |                              |     |
| 205    | DPEC005290   | "L" Shaped Rubber Gasket             | 1   |        |              |                              |     |
| 206    | DPEC004339   | "Y" Adapter                          | 1   |        |              |                              |     |
| 207    | DPEC004338   | Nozzle                               | 2   |        |              |                              |     |
| 208    | DPEC004781   | Pressing Plate                       | 1   |        |              |                              |     |
| 209    | DPEC005619   | Lock Pin Assembly                    | 1   |        |              |                              |     |
| 210    | DPEC004762   | Water tray knob                      | 3   |        |              |                              |     |
| 211    | DPEC004763   | Fixed Screw                          | 3   |        |              |                              |     |
| 212    | DPEC004790   | Hex Nut                              | 2   |        |              |                              |     |
| 213    | DPEC004754   | Torx Screw                           | 2   |        |              |                              |     |
| 214    | DPEC004792   | Pressing plate (for rear water tray) | 2   |        |              |                              |     |
| 215    | DPEC005291   | Side water tray                      | 1   |        |              |                              |     |
| 217    | DPEC005620   | Blade                                | 1   |        |              |                              |     |
| 218    | DPEC005621   | Motor Arm Assembly                   | 1   |        |              |                              |     |
| 219    | DPEC005622   | Motor Assembly with Switch and Rotor | 1   |        |              |                              |     |
| 220    | DPEC005292   | Rubber gasket                        | 1   |        |              |                              |     |
| 221    | DPEC005293   | Rubber gasket                        | 1   |        |              |                              |     |
| 222    | DPEC005294   | Rubber gasket                        | 1   |        |              |                              |     |
| 223    | DPEC004782   | Rubber gasket                        | 1   |        |              |                              |     |
| 224    | DPEC005558   | Cover                                | 1   |        |              |                              |     |

\*\* = Item is standard hardware and can be purchased in local hardware or home improvement stores.