

REPLACEMENT PARTS

REF NO	PART NUMBER	DESCRIPTION	REF NO	PART NUMBER	DESCRIPTION
*	406-03-362-0001	IDLER DRUM BRACKET ASSY, CONST OF:	65	901-01-060-0639	7/16-14 X 3 1/2" HEX HEAD SCREW
1	406-03-014-0001	IDLER DRUM BRACKET	66	420-01-106-0003	DRIVE SHAFT, INCL:
1A	902-07-020-7176	1 5/8-20 BEARING NUT	66A	904-15-013-1047	EXT RETAINING RING
2	905-01-010-5085	SPRING PIN	66B	902-01-023-1475	LOCK NUT
3	406-03-071-0001	KEY	67	927-03-010-2656	KEY
5	920-04-010-7273	BEARING	68	920-04-020-5348	BEARING
6	406-03-104-0002	SPACER	69	902-07-030-7171	BEARING NUT
7	406-03-362-0003	IDLER DRUM (PAIR)	70	420-01-354-0005	BELT GUARD
8	406-03-108-0001	IDLER DRUM SHAFT, INCL:	71	901-03-040-8015	1/4-20 X 1/2" BUTTON HEAD SCREW
8A	902-01-281-7295	1/4-20 HEX NUT	71	904-01-010-1620	5/16" FLAT WASHER
8B	902-01-020-1227	1/2-20 HEX JAM NUT	72	41-074	ARBOR PULLEY - 3/4" BORE, INCL:
9	406-03-104-0002	SPACER	73	901-04-150-0206	5/16-18 X 5/8" HEX SOC SET SCREW
15	406-03-067-0001	BELT TENSION LEVER	74	49-035	55-3/8" OC V-BELT
16	406-03-071-0002	BELT TENSION LEVER PIN	77	424-03-754-0001	NAMEPLATE
17	904-07-010-5567	1/2" FIBER WASHER	78	420-01-005-0002	BASE
18	406-03-138-0003	KNOB	79	904-02-020-1704	3/8" LOCKWASHER
19	406-03-412-0007	BELT ADJUSTING SCREW ASSEMBLY	80	901-01-060-0648	3/8-16 X 1 1/4" HEX HEAD SCREW
20	406-03-049-0002	FRAME	81	901-03-011-9984	3/8-24 X 1 1/2" SOC HEAD SCREW
21	951-02-010-7822	TILT SCALE	82	904-01-010-1606	3/8" FLAT WASHER
22	901-06-450-2250	#04 X 3/16" ROUND HEAD SCREW	83-	901-01-060-0688	3/8-24 X 3/4" HEX HEAD SCREW
23	901-03-010-0229	1/4-20 X 1/2" SOC HEAD SCREW	84	901-04-020-8670	STOP PIN
24	905-01-010-2705	SPRING PIN	85	902-01-201-2579	7/16-14 HEX NUT
25	418-03-088-0001	STOP BLOCK	90	416-02-054-0003	GUARD
27	31-401	TILTING TABLE ASSEMBLY, INCL:	91	961-01-010-7499	PLUG
27	406-03-137-0004	NAMEPLATE	94	420-01-111-0003	STUD
27	901-06-450-2250	#04 X 3/16" ROUND HEAD SCREW	100	416-02-327-0002	CLAMP W/PINS
28	406-03-395-0003	TRUNNION, INCL:	101	420-01-075-0001	POINTER
29	418-03-055-0001	KEY	102	901-02-010-0502	1/4-20 X 1/4" ROUND HEAD SCREW
30	901-02-010-0561	#10-32 X 3/8" ROUND HEAD SCREW	103	406-03-138-0004	KNOB
32	1087397	POINTER	104	928-01-021-4125	SPRING
33	901-04-193-1064	1/4-28 X 1" HEX SOC SET SCREW	105	904-01-031-2925	FLAT WASHER
35	1231522	PIN	*	416-02-395-0001	TRUNNION ASSEMBLY, CONST OF:
36	901-01-060-0608	5/16-18 X 7/8" HEX HEAD SCREW	106	416-02-095-0001	TRUNNION
36A	904-01-010-1620	5/16" FLAT WASHER	107	951-02-010-7820	TILT SCALE
37	406-03-122-0002	SPRING	108	901-06-450-2250	#04 X 3/16" ROUND HEAD SCREW
38	406-03-112-0006	SPECIAL SCREW	109	904-01-010-1614	FLAT WASHER
39	406-03-111-0002	STUD	110	901-01-060-0612	1/4-20 X 5/8" HEX HEAD SCREW
40	904-01-010-1606	3/8" FLAT WASHER	111	31-034	DISC ASSEMBLY, INCL:
41	902-01-201-2579	7/16-14 HEX NUT	112	901-03-030-0761	1/4-20 X 1/2" FLAT HEAD SCREW
42	406-03-033-0002	RATCHET HANDLE	113	901-04-190-0201	5/16-18 X 5/16" HEX SOC SET SCREW
*	1086998	SCREW ASSEMBLY, INCL:	114	416-02-091-0001	TILTING TABLE
45	902-02-010-1304	7/16-14 SQUARE NUT	117	416-02-095-0001	TRUNNION
46	406-03-122-0001	SPRING	118	904-01-010-1614	1/4" FLAT WASHER
47	406-03-031-0001	SLEEVE	119	901-01-060-0612	1/4-20 X 5/8" HEX HEAD SCREW
48	928-01-021-3381	COIL SPRING	122	901-01-060-0645	3/8-16 X 3" HEX HEAD SCREW
49	1086990	SCREW ASSEMBLY, INC;:	123	904-01-010-1606	3/8" FLAT WASHER
50	904-10-031-3804	COLLAR	124	902-01-010-5900	3/8-16 HEX JAM NUT
51	905-01-010-2704	SPRING PIN			
52	904-07-011-5711	FIBER WASHER			
54	406-03-020-0001	FLANGE			
55	406-03-438-0001	CRANK, INCL:	126		6" X 48" ABRASIVE BELT
56	901-04-190-0225	5/16-18 X 1/4" HEX SOC SET SCREW	127		12" ABRASIVE DISC
57	0919783	SCREW			
59	406-01-362-0006	DRIVE DRUM (PAIR)			
60	406-03-079-0001	SPANNER NUT			
61	406-03-104-0003	SPACERS	140	41-033	PULLEY - 5/8" BORE, INCL:
62	920-04-020-5360	BEARING	141	901-04-150-0206	5/16-18 X 5/8" HEX SOC SET SCREW
63	406-03-027-0001	CLAMP RING			
64	406-03-012-0001	HOUSING	*		NOT SHOWN ASSEMBLED

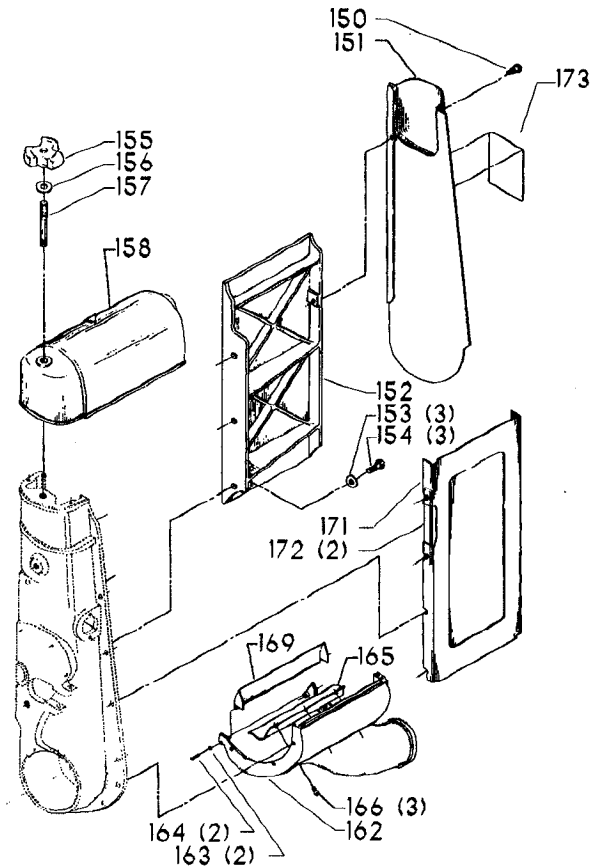
AVAILABLE AS ACCESSORIES

6" X 48" ABRASIVE BELT
12" ABRASIVE DISC

INCLUDED WITH STAND AND ELECTRICALS

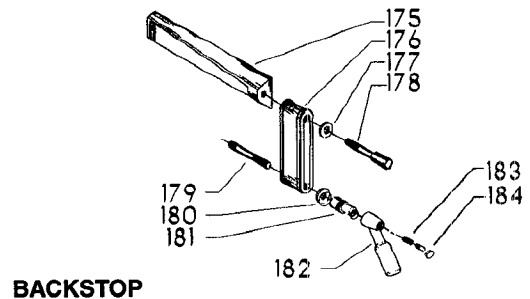
PULLEY - 5/8" BORE, INCL:
5/16-18 X 5/8" HEX SOC SET SCREW

REPLACEMENT PARTS

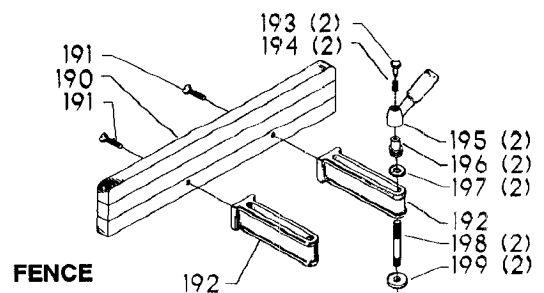


REF NO	PART NUMBER	DESCRIPTION
150	901-04-340-7605	SCREW
151	406-03-054-0015	GUARD
152	406-03-091-0001	PLATEN
153	904-01-010-1605	3/8" FLAT WASHER
154	901-01-060-0640	3/8-16 X 3/4" HEX HEAD SCREW
155	406-03-138-0004	KNOB
156	904-01-031-2925	FLAT WASHER
157	420-01-111-0003	STUD
158	406-03-054-0014	GUARD
162	406-03-054-0013	GUARD
163	904-02-010-1726	LOCK WASHER
164	901-03-010-8072	#06-32 X 3/4" SOC HEAD SCREW
165	406-03-036-0002	DEFLECTOR
166	901-03-010-3318	#10-32 X 3/8" SOC HEAD SCREW
169	406-03-036-0001	DUST PLATE
171	406-03-054-0004	GUARD PAN
172	406-03-004-0001	CLAMP BAR
173	406-00-752-0001	WARNING DECAL

REF NO	PART NUMBER	DESCRIPTION
AVAILABLE AS ACCESSORIES		
*	31-403	BACKSTOP ASSEMBLY, CONST OF:
175	406-03-088-0001	BACKSTOP
176	406-03-014-0004	LINK
177	904-10-031-2097	COLLAR WASHER
178	901-09-070-6124	7/16-14 X 3" HEX HEAD SCREW
179	420-01-111-0003	STUD
180	904-10-031-2097	COLLAR WASHER
181	432-01-027-0004	NUT
182	406-03-033-0001	HANDLE
183	406-03-122-0002	SPRING
184	406-03-112-0003	SPECIAL SCREW
*	31-014	FENCE, CONST OF:
190	406-03-043-0001	WOODEN FENCE
191	901-02-030-0409	5/16-18 X 1 1/4" FLAT HEAD SCREW
192	406-03-014-0002	BRACKET
193	406-03-112-0003	SPECIAL SCREW
194	406-03-122-0002	SPRING
195	406-03-033-0001	HANDLE
196	902-04-030-1408	7/16-14 SERRATED NUT
197	904-10-031-2097	COLLAR WASHER
198	420-01-111-0003	STUD
199	904-10-031-3803	COLLAR WASHER
**	34-568	CLAMP ATTACHMENT (For 34-895 Miter Gage)
**	34-895	MITER GAGE
*	NOT SHOWN ASSEMBLED	
**	NOT SHOWN	



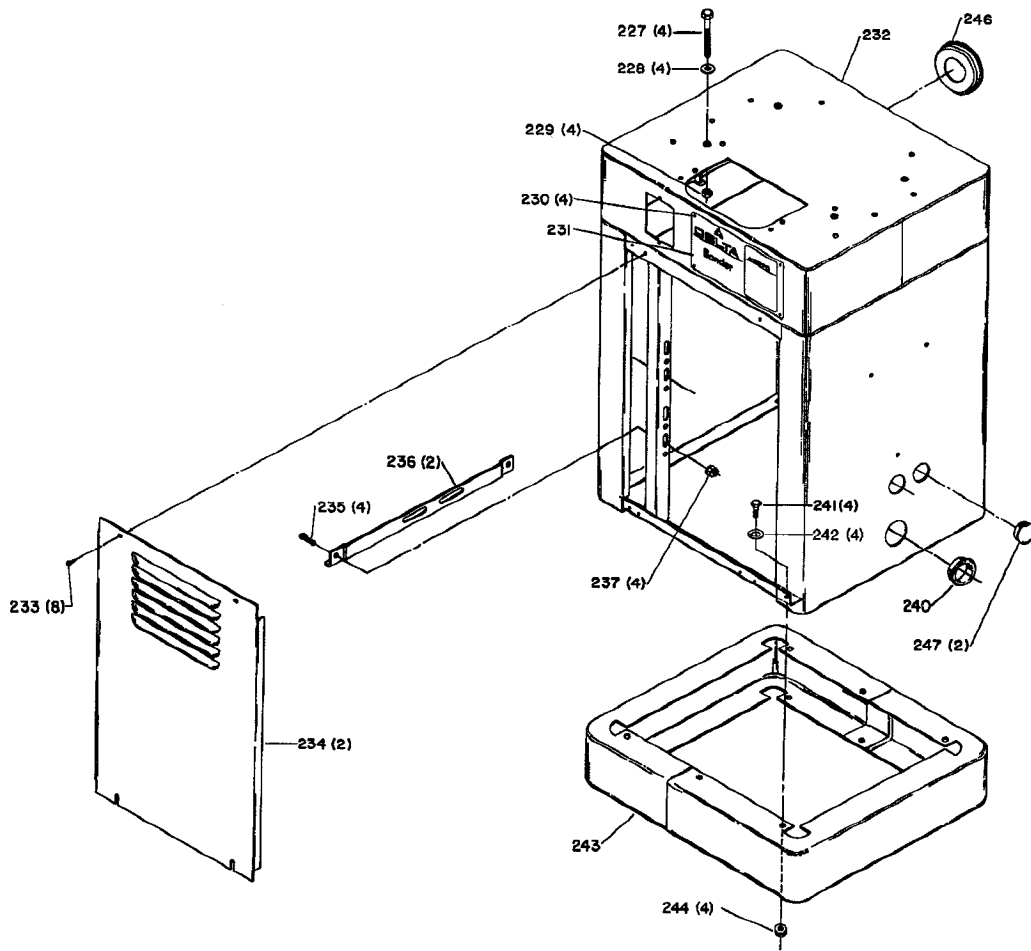
BACKSTOP



FENCE

REPLACEMENT PARTS

AVAILABLE AS AN ACCESSORY



REF NO	PART NUMBER	DESCRIPTION	REF NO	PART NUMBER	DESCRIPTION
*	50-114	BASIC STAND, CONST OF:	241	901-01-060-0607	5/16-18 X 3/4" HEX HEAD SCREW
227	901-01-060-0645	3/8-16 X 3" HEX HEAD SCREW	242	904-01-010-1620	5/16" FLAT WASHER
228	904-01-010-1606	3/8" FLAT WASHER	243	436-01-305-0001	SUB BASE
229	902-01-010-5900	3/8-16 HEX JAM NUT	244	902-01-503-1514	5/16-18 FLANGE HEX NUT
230	1087794	RIVIT	246	436-01-074-0002	HOLE PLUG
231	406-03-137-0003	NAMEPLATE	247	438-01-011-0065	PLUG
232	436-01-318-0011	CABINET ASSEMBLY	**	901-11-020-0834	(4) 5/16-18 X 3/4" CARRIAGE BOLT (For Mounting Motor To Motor Bracket)
233	901-06-443-1806	#10-24 X 1/2" HEX HEAD SCREW	**	902-01-010-1300	(4) 5/16-18 HEX NUT (For Mounting Motor To Motor Bracket)
234	436-01-123-0002	SIDE PANEL	**	904-03-030-1656	(4) 5/16" EXT TOOTH WASHER (For Mounting Motor To Motor Bracket)
235	901-11-020-0834	5/16-18 X 3/4" CARRIAGE BOLT			
236	436-01-004-0006	MOTOR BRACKET			
237	902-01-503-1514	5/16-18 FLANGE HEX NUT			
240	438-01-011-0020	INSULATOR			
			*		NOT SHOWN ASSEMBLED
			**		NOT SHOWN

STANDARD SAFETY EQUIPMENT

In order to promote tool safety, Delta International Machinery Corp. strictly enforces the policy of repairing or replacing any damaged or missing standard safety equipment on machines presented to Delta Authorized Service Center for service/repairs. Any product which is presented to a Delta Authorized Service Center for repairs which contains missing or damaged standard safety equipment will have that equipment repaired or replaced and the customer will be charged for any such service/repairs. Customers can avoid such charges only if the missing safety component is supplied to the service center at the time of repair.

This parts list is provided to aid in obtaining service parts. Copies of the instruction and maintenance literature can be obtained through the Delta Technical Publications Department or through your local service outlet.