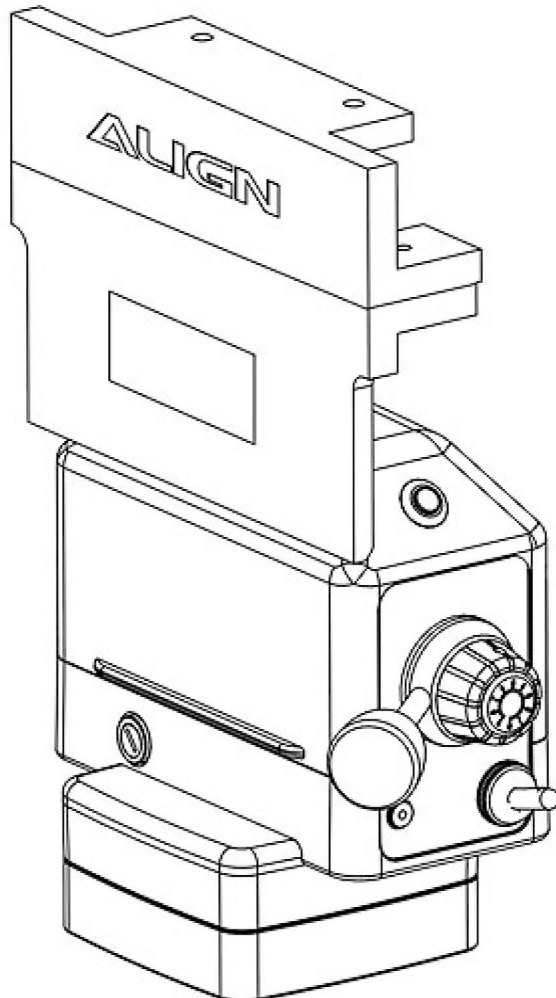


# JET<sup>®</sup>

S/N 350083

## POWER TABLE FEED OPERATION MANUAL

**AL/CE-500D**



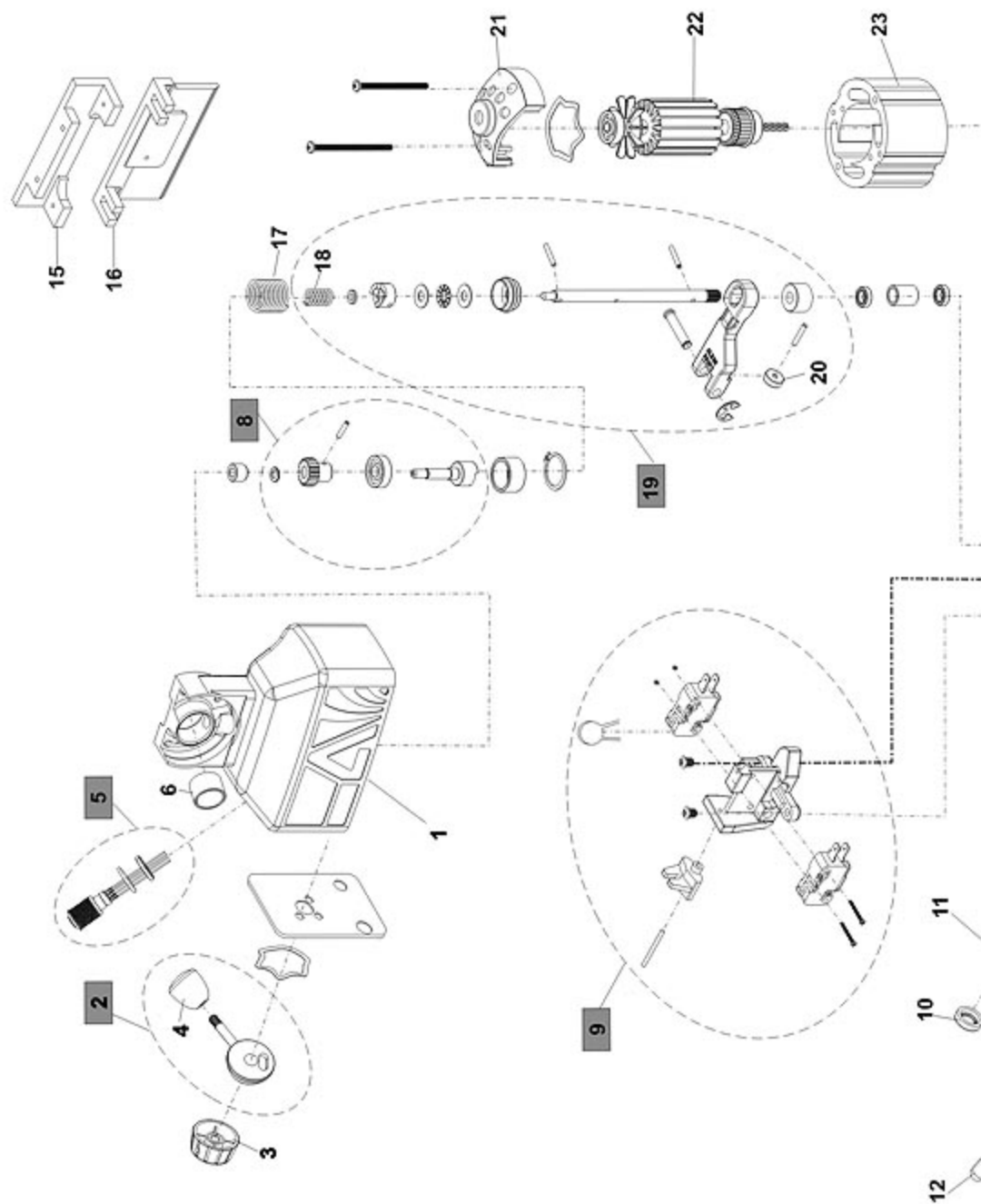
## CAUTION

1. It will damage the gear of power feed if you suddenly change the direction of power feed by pushing the direction control handle while the machine is under high-speed operation. If you intend to change the direction, please push the handle to the "off" position. Waiting until the machine is completely stopped, then push the handle to your intended direction.
2. Please make sure the position of the stop screw for your milling machine is keeping on "loose" status.
3. While the power feed is under operation, please don't change to use manual control the direction suddenly.

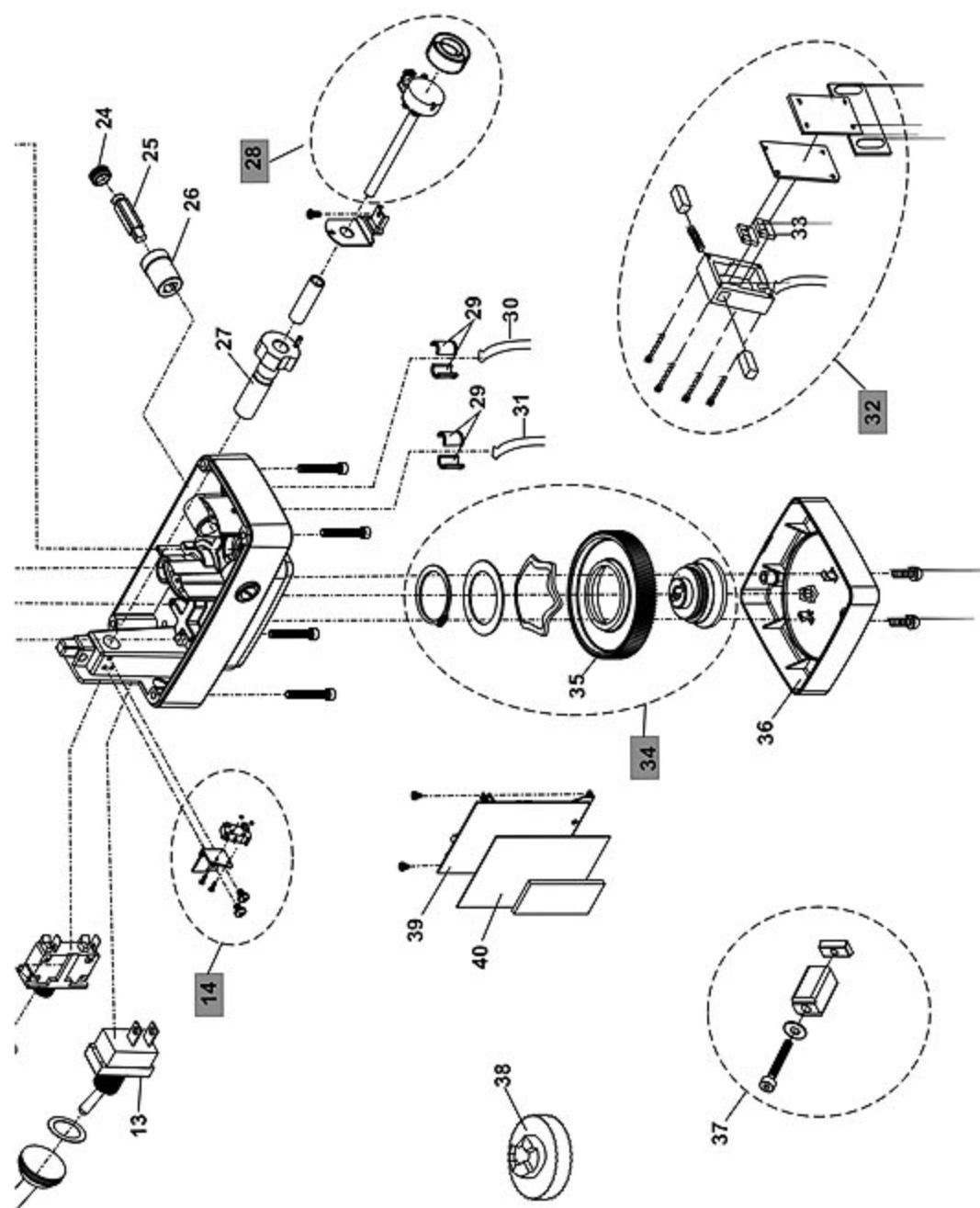
## PARTS LIST

NO.	PART NAME	PART NO.	SPECIFICATION	REMARK
1	AL/CE-500D TOP HOUSING	PT100-12		
2	180° CONTROL HANDLE	P01810-12		
3	SPEED CONTROL KNOB	P01811-03	φ 35.5x φ 29.9x19mm	
4	HANDLE KNOB	E0913-03	φ 31.8x33mm	
5	ANTI-VANDAL SWITCH	C0509		
6	INNER RING	A50113-99D	φ 32x15.2mm	
8	500D UPPER CLUTCH ASSEMBLY	PT-200D		
9	DIRECTION SWITCH ASSEMBLY	C0501-6V		
10	CAP OF CIRCUIT BREAKER	A0102-01		
11	CIRCUIT BREAKER	A0102	3.15A 125V AC	
12	CAP OF ON-OFF SWITCH	E0907-01	φ 21X φ 11X25mm	
13	ON-OFF SWITCH	E0907	R13-25A	
14	BRAKE SWITCH ASSEMBLY	C0508	6A 125V-250AC	
15	AL-500D SMALL ADAPTOR	A011399A-12		
16	AL-500D ADAPTOR	A011399-12		
17	SPRING FOR TOP HOUSING	A0112	φ 11.5X φ 1.4X20mm	

# SCHEMATIC DIAGRAM OF PARTS



# SCHEMATIC DIAGRAM OF PARTS





**ALIGN CORPORATION LIMITED**  
**<http://www.align.com.tw>**