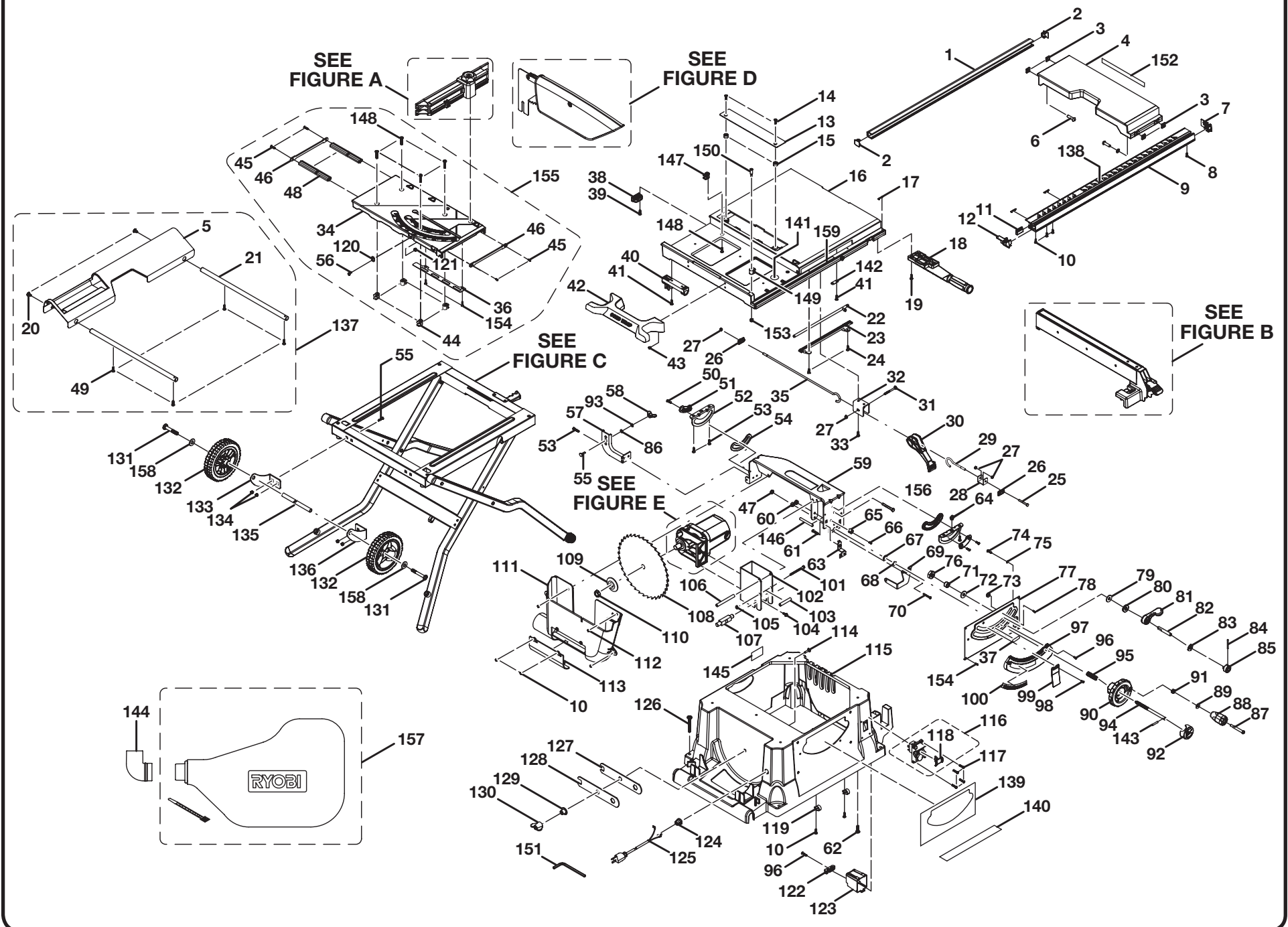


RYOBI 10 in. TABLE SAW - MODEL NUMBER BTS21



RYOBI 10 in. TABLE SAW – MODEL NUMBER BTS21

The model number will be found on a plate attached to the motor housing. Always mention the model number in all correspondence regarding your **TABLE SAW** or when ordering repair parts.

PARTS LIST

KEY NO.	PART NUMBER	DESCRIPTION	QTY.	KEY NO.	PART NUMBER	DESCRIPTION	QTY.
1	0134011803	REAR RAIL	1	29	0134010902	SHORT LINKAGE	1
2	0134010211	END CAP (REAR RAIL).....	2	30	0134010229	TABLE EXTENSION LEVER	1
3	0134010308	RAIL HOLDER NUT	4	31	410031002	* CARRIAGE SCREW (M6 x 40 mm)	1
4	089110110002	EXTENDED TABLE.....	1	32	0134010306	BRACKET	1
5	0134010322-58	OUTFEED SUPPORT	1	33	410251017	* SCREW/WASHER (M6 x 12 mm)	2
6	410341004	* SCREW/ WASHER (M6 x 15 mm HEX SOC HD.).....	4	34	089110110021	SLIDING MITER TABLE	1
7	0134010212	END CAP (RIGHT FRONT RAIL).1		35	0134010903	LONG LINKAGE	1
8	410561014	* SCREW (M4 x 5 mm)	1	36	0134010309	SUPPORTING PLATE	1
9	089110110023	FRONT RAIL.....	1	37	089110110017	BEVEL LOCK LEVER LABEL	1
10	410561004	* SCREW (M4 x 12 mm PAN HD.)	8	38	0134010223	REAR RAIL HOLDER.....	3
11	0134010242	FRONT RAIL STOPPER	1	39	410351003	* SCREW/WASHER (M6 x 25 mm HEX HD.)	6
12	0134010219	EXTENDED TABLE INDICATOR	1	40	0121010214	EXTENSION BRACKET	2
13	089110110003	THROAT PLATE	1	41	089110110032	* SCREW (10#-24 x 1/2 in.)	6
14	410101005	* SCREW (M5 x 15 mm FLAT HD.).....	2	42	089110110006	CORD WRAP.....	1
15	0121011301	THROAT PLATE PAD	2	43	089110110024	SCREW/WASHER.....	4
16	089110110004	SAW TABLE	1	44	0134010216	HOOK.....	4
17	0134010213	SLIDER.....	5	45	410201005	* SCREW (M4 x 12 mm FLAT HD.).....	4
18	089110110031	TABLE TILT HANDLE	1	46	0134010314	SLIDING MITER TABLE BAR	2
19	0131010814	* SCREW (#10-32 x 25 mm)	4	47	411071707	* LOCK NUT (1/4-20).....	1
20	410551701	* SCREW/WASHER (1/4-20 x 1/2 in.).....	2	48	0134011804	SLIDING BAR	2
21	0134010916	GUIDE ROD.....	2	49	410192001	* SCREW (D4 x 10 mm TRUSS HD.).....	4
22	0134010911	MITER SLIDE LOCK.....	1	50	410109008	* SCREW (M5 x 12 mm PAN HD.).....	4
23	089110110005	GUIDE	1	51	0134010220	SLIDER.....	2
24	410171721	* SCREW (8-32 x 3/8 in.)	2	52	089110110033	BRACKET	2
25	410011013	* SCREW (M6 x 40 mm HEX HD.)	1	53	410371003	* SCREW W/WASHER (M6 x 12 mm)	6
26	0134010206	LOCKING BLOCK	2	54	089110110034	SLIDER.....	2
27	411071001	NUT (NYLON LOCK)	4				
28	0134010332	ADJUSING PLATE.....	1				

* Standard Hardware Item – May Be Purchased Locally

RYOBI 10 in. TABLE SAW – MODEL NUMBER BTS21

The model number will be found on a plate attached to the motor housing. Always mention the model number in all correspondence regarding your **TABLE SAW** or when ordering repair parts.

PARTS LIST

KEY NO.	PART NUMBER	DESCRIPTION	QTY.	KEY NO.	PART NUMBER	DESCRIPTION	QTY.
55	410031014	* CARRIAGE BOLT (M8 x 15 mm)	5	82	0134010912	SCREW (SS41).....	1
56	0134010910	LOCKING PIN.....	2	83	0134010316	SHIM	1
57	0134010319	RIVING KNIFE BRACKET	1	84	410138743	* SCREW (8-32 x 1 in. PAN HD.) .	1
58	411171003	* WING NUT (M8).....	1	85	0134010224	BEVEL LOCKING LEVER CAM .	1
59	0134010321	PIVOT BRACKET	1	86	412041005	EXTERNAL STAR WASHER (D8).....	1
60	411011707	* HEX NUT (1/4 x 20)	1	87	0101140203	SCREW	1
61	410291006	* SCREW W/WASHER (M8 x 10 mm)	1	88	0131020212	HAND WHEEL GRIP.....	1
62	410161010	* HEX SCREW (M6 x 25 mm)	5	89	412012041	FLAT WASHER (6.5 x 13 x 1.5T).....	1
63	0134010317	INDICATOR BRACKET.....	1	90	089110110007	HEIGHT/BEVEL ADJUSTING HANDWHEEL.....	1
64	0121010901	ECCENTRIC SHAFT.....	1	91	411072702	* LOCK NUT (1/4-20).....	1
65	0134010503	PLATE	1	92	089110110008	HANDWHEEL END CAP	1
66	410109019	* SCREW (M6 x 20 mm FLAT HD.).....	1	93	412011037	* FLAT WASHER (D8.5 x D16 x 1.5T).....	1
67	412011701	WASHER (1/4 x 16 x 1T)	2	94	0134010905	HANDWHEEL ROD	1
68	089110110035	* HEX NUT (3/8 in.)	1	95	0101010907	COMPRESSION SPRING.....	1
69	0134010305	SUPPORT BRACKET	1	96	0000120817	* SCREW (8-16 x 19.05 mm PAN HD.).....	5
70	410291004	* SCREW/WASHER (M6 x 10 mm)	2	97	0134010228	GEAR RACK.....	1
71	0134010236	LOCKING RING.....	1	98	410331010	* SCREW W/WASHER (M5 x 8 mm PAN HD.).....	2
72	412011117	* WASHER (M10 x 23 x 2T)	1	99	0134010233	BEVEL SCALE INDICATOR.....	1
73	0134010339	CAM	2	100	089110110009	BEVEL SCALE LABEL	1
74	410134005	* SCREW (M4 x 5 mm PAN HD.) .	2	101	410011027	* SCREW (M6 x 70 mm HEX HD.)	1
75	412042002	* WASHER (D4).....	2	102	0134010318	MOTOR BRACKET	1
76	411071004	* LOCK NUT (M10)	1	103	0134010907	SPACER.....	1
77	0134010320	FRONT CABINET SUPPORT PLATE.....	1	104	410161001	* SCREW (M6 x 15 mm HEX - TOOTH HD.).....	3
78	410499007	* SCREW (M5 x 8 mm TRUSS HD.)	2	105	411061001	* HEX NUT (M6 TOOTH HD.).....	3
79	412011074	* FLAT WASHER (D10 X D26 X 2T)	1	106	414011002	* PIN (D8 x 90 mm)	1
80	0134011301	RUBBER PAD.....	1	107	0121010902	GLIDER	1
81	0134010230	BEVEL LOCKING LEVER	1				

* Standard Hardware Item – May Be Purchased Locally

RYOBI 10 in. TABLE SAW – MODEL NUMBER BTS21

The model number will be found on a plate attached to the motor housing. Always mention the model number in all correspondence regarding your **TABLE SAW** or when ordering repair parts.

PARTS LIST

KEY NO.	PART NUMBER	DESCRIPTION	QTY.	KEY NO.	PART NUMBER	DESCRIPTION	QTY.
108	089110110001	BLADE (36T).....	1	134	411061003	NUT (M8).....	4
109	089110110036	OUTER BLADE WASHER.....	1	135	0134010909	AXLE.....	1
110	0181010804	BLADE NUT (5/8-18).....	1	136	0134010302	RIGHT BRACKET.....	1
111	0134010225	INNER DUST COVER.....	1	137	A134013901	OUTFEED SUPPORT ASSEMBLY.....	1
112	410331003	* SCREW W/WASHER (M6 x 10 mm PAN HD.).....	4	138	089110110013	SCALE LABEL.....	1
113	0134010226	OUTER DUST COVER.....	1	139	089110110014	NAME PLATE.....	1
114	410031710	* CARRIAGE BOLT (5/16-18 x 1/2 in.).....	1	140	089110110015	WARNING LABEL.....	1
115	089110110010	CABINET.....	1	141	9134015330201	PINCH POINT LABEL.....	1
116	984406001	SWITCH.....	1	142	0134010304	SHIM.....	1
117	410601004	* SCREW (M4 x 18 mm).....	4	143	414011003	PIN (4 x 20 mm).....	1
118	984406003	SWITCH KEY.....	1	144	0181010247	DUST BAG ELBOW.....	1
119	0121010242	WIRE CLAMP.....	3	145	089110110019	LABEL.....	1
120	0181010501	QUICK-STOP.....	2	146	0134010906	SPACER.....	2
121	0134010802	LOCKING NUT.....	2	147	0134010216	HOOK.....	3
122	0131010210	CLAMPING PAD (POWER CORD).....	1	148	410561013	* SCREW (M5 x 16 mm PAN HD.).....	7
123	0131010209	SWITCH BOX.....	1	149	0134010214	ADJUSTING HOOK.....	1
124	451010003	STRAIN RELIEF.....	1	150	089110110041	ECCENTRIC SCREW.....	1
125	0134010701	POWER CORD.....	1	151	089110110025	HEX KEY (M5 x 100 mm).....	1
126	410499006	* SCREW (M8 x 40 mm BUTTON HD.).....	4	152	089110110016	SET UP LABEL.....	1
127	089110110037	SMALL BLADE WRENCH (OPEN END = 19 mm; CLOSED . END = 19 mm).....	1	153	411071003	* NYLON NUT (M5).....	1
128	0134010331	LARGE BLADE WRENCH (OPEN END = 21 mm; CLOSED END = 10 mm).....	1	154	410181001	* SCREW (M4 x 7 mm FLAT HD.).....	6
129	0134010238	FLANGE WASHER.....	1	155	089110110704	MITER TABLE ASSEMBLY.....	1
130	0131020211	WING NUT.....	1	156	410011024	* HEX SCREW (M6 x 110 mm)....	2
131	410611001	* SCREW/WASHER (M6 x 15 mm).....	2	157	089110110702	DUST BAG ASSEMBLY.....	1
132	089110110012	WHEEL.....	1	158	412011744	* WASHER (6.5 x 20 x 1.6T).....	2
133	0134010301	LEFT BRACKET.....	1	159	089110110018	SCALE LABEL.....	1
					987000087	OPERATOR'S MANUAL (089110110902)	
					02-21-07		
					(REV:00)		

* Standard Hardware Item – May Be Purchased Locally

RYOBI 10 in. TABLE SAW – MODEL NUMBER BTS21

The model number will be found on a plate attached to the motor housing. Always mention the model number in all correspondence regarding your **TABLE SAW** or when ordering repair parts.

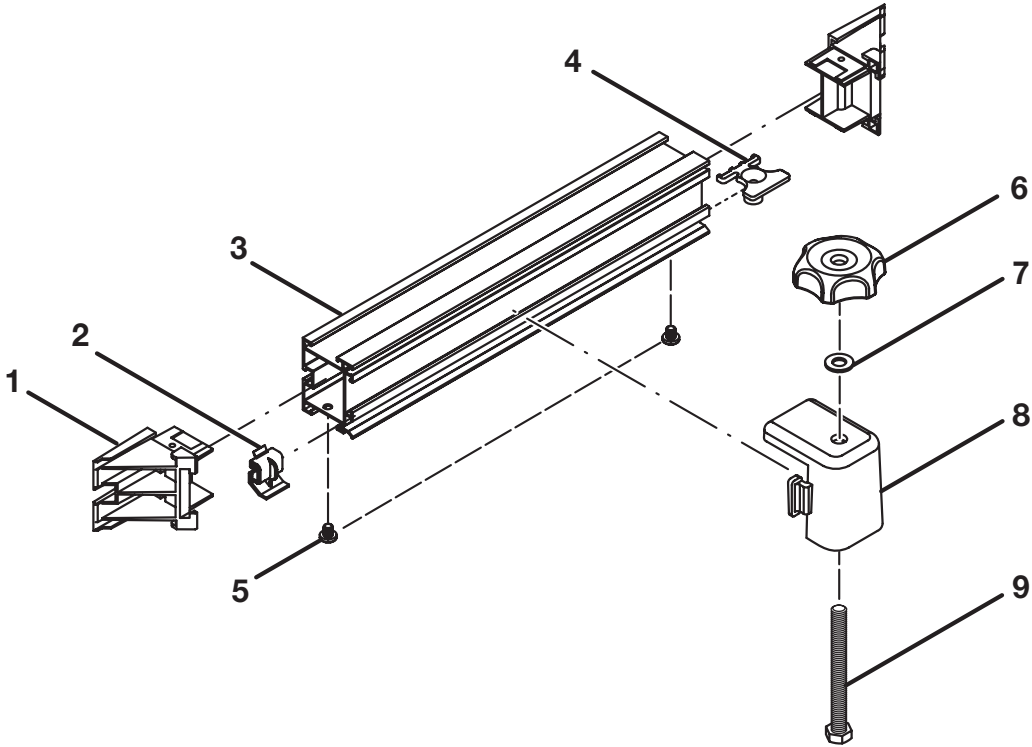


FIGURE A

PARTS LIST FOR FIGURE A

KEY NO.	PART NUMBER	DESCRIPTION	QTY.
	A134010801	MITER FENCE ASSEMBLY (INC. KEY NOS. 1 - 9).....	1
1	0134010227	END CAP	2
2	0181010208-58	MITER INDICATOR	1
3	0134011801	MITER FENCE	1
4	0134010244	LOCATOR PIN	1
5	410451702	* SCREW (3/16 in. PAN HD.).....	2
6	0181010209	ADJUSTING KNOB	1
7	412011051	FLAT WASHER (8 x 16 x 1.5T).....	1
8	0181010210	MITER FENCE HOLDER.....	1
9	410011717	* HEX SCREW (5/16-18 x 3-1/4 in.).....	1

* Standard Hardware Item – May Be Purchased Locally

RYOBI 10 in. TABLE SAW – MODEL NUMBER BTS21

The model number will be found on a plate attached to the motor housing. Always mention the model number in all correspondence regarding your **TABLE SAW** or when ordering repair parts.

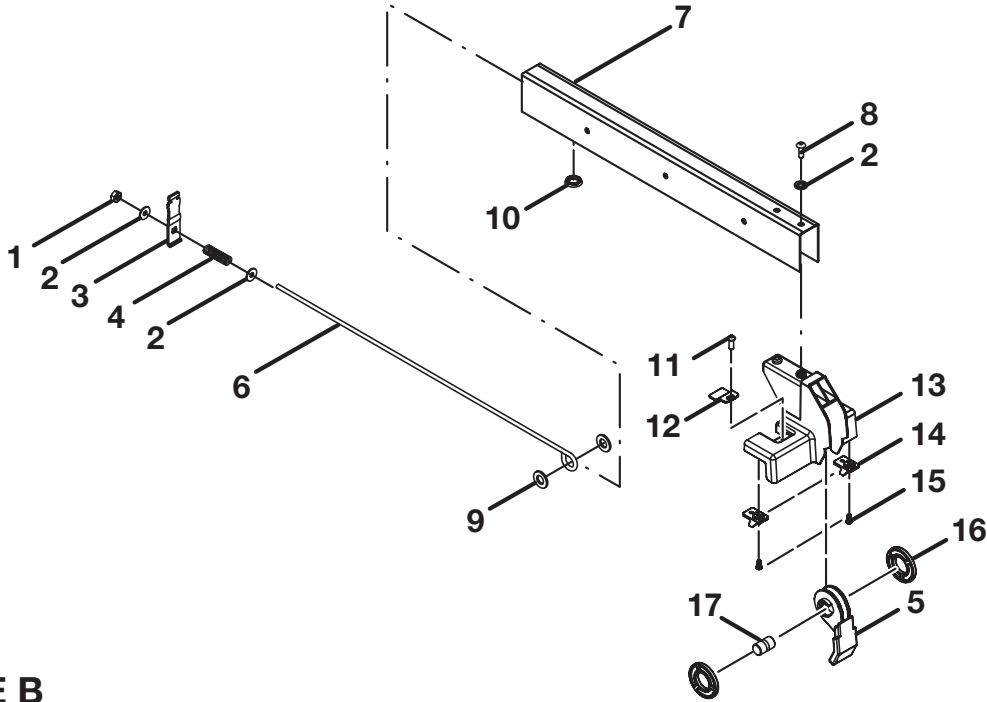


FIGURE B

PARTS LIST FOR FIGURE B

KEY NO.	PART NUMBER	DESCRIPTION	QTY.
	089110110701	RIP FENCE ASSEMBLY (INC. KEY NOS. 1-17).....	1
1	411071001	* NUT (M6)	1
2	412011030	WASHER (D6.5 x D16 x 1.5T).....	4
3	0121010310	REAR CLAMPING PLATE	1
4	0121010915	SPRING	1
5	0134010231	LOCKING LEVER	1
6	0134010904	ROD	1
7	0134011805	RIP FENCE (506.2 mm)	1
8	410051001	* SCREW (M6 x 15 mm TRUSS).....	2
9	412011115	WASHER (16 x 25 x 1.5T).....	2
10	0121010209	RIP FENCE SLIDER.....	1
11	410331008	SCREW W/WASHER (M4 x 10 mm).....	1
12	0134010232	INDICATOR.....	1
13	089110110030	FRONT BLOCK.....	1
14	0134010218	SLIDER	2
15	089110110040	SCREW (8-32 x 1/2 in. SELF-TAP FLAT HD.).....	4
16	0121010210	ROUND PAD	2
17	0134010241	AXLE	1

* Standard Hardware Item – May Be Purchased Locally

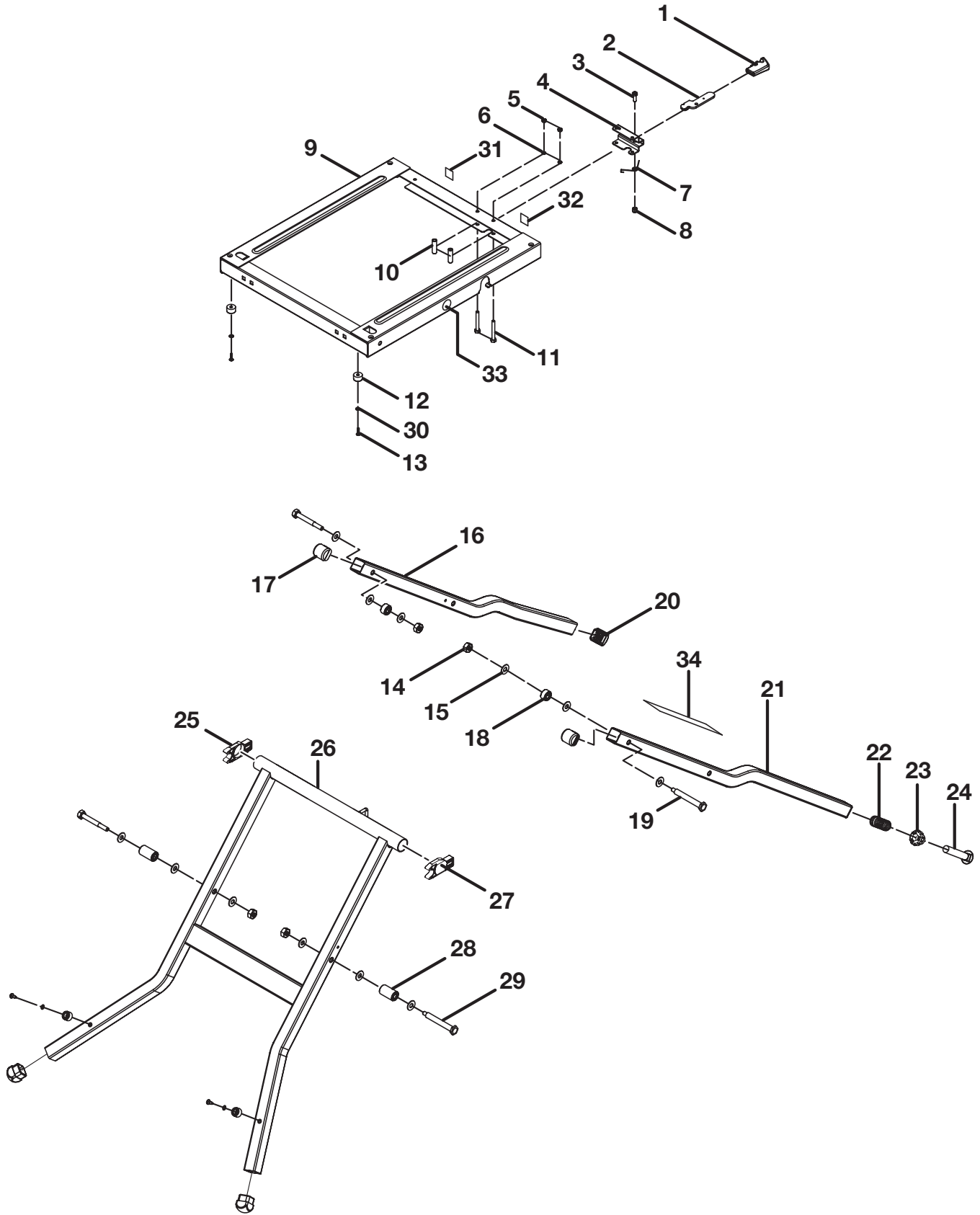


FIGURE C

RYOBI 10 in. TABLE SAW – MODEL NUMBER BTS21

The model number will be found on a plate attached to the motor housing. Always mention the model number in all correspondence regarding your **TABLE SAW** or when ordering repair parts.

PARTS LIST FOR FIGURE C

KEY NO.	PART NUMBER	DESCRIPTION	QTY.
	089110110703	LEG STAND ASSEMBLY (INC. KEY NOS. 1-34).....	1
1	0131011301	LEG STAND LATCH	1
2	0131010322	LATCH BAR	1
3	0131010810	SCREW	1
4	0131010323-82	BRACKET	1
5	411011707	* HEX NUT (1/4 x 20).....	2
6	412041702	WASHER (1/4 in.).....	2
7	0131010915	SPRING	1
8	411071702	* NYLON NUT (1/4 x 20)	1
9	A134017001	LEG BRACKET ASSEMBLY.....	1
10	0131010923	PIN	2
11	410011722	* HEX SCREW (1/4-20 x 50.8 mm)	2
12	0131011302	PAD.....	4
13	410451017	* SCREW (M6 x 18 mm).....	4
14	0512010812	* NYLON NUT (M10)	4
15	412011111	WASHER (D10.3 x D27 x 2T).....	12
16	089110110022	REAR LEG SUPPORT.....	1
17	0134010235	LEG UPPER END CAP	2
18	0134010240	SPACER TUBE	2
19	410011028	* SCREW (M10 x 105 mm HEX HD.)	2
20	0134010243	LEG END CAP	3
21	089110110705	FRONT LEG SUPPORT	1
22	0131010918	SPRING	1
23	0131010232	FOOT LEVEL ADJUSTMENT.....	1
24	410031714	* BOLT (5/8-11 x 88.9 mm)	1
25	0131010230	LEG REAR SLIDER.....	1
26	089110110706	TUBE	1
27	0131010231	LEG FRONT SLIDER	1
28	0134010239	LEG SPACER TUBE	2
29	410011029	* HEX SCREW (M10 x 115 mm).....	2
30	412011025	WASHER (6.5 x 10 x .8T).....	4
31	9134015335703	LEG LOCK LABEL	1
32	9134015335704	LEG UNLOCK LABEL.....	1
33	9134015330202	PINCH POINT LABEL	2
34	089110110901	TEAR DOWN LABEL	1

* Standard Hardware Item – May Be Purchased Locally

RYOBI 10 in. TABLE SAW – MODEL NUMBER BTS21

The model number will be found on a plate attached to the motor housing. Always mention the model number in all correspondence regarding your **TABLE SAW** or when ordering repair parts.

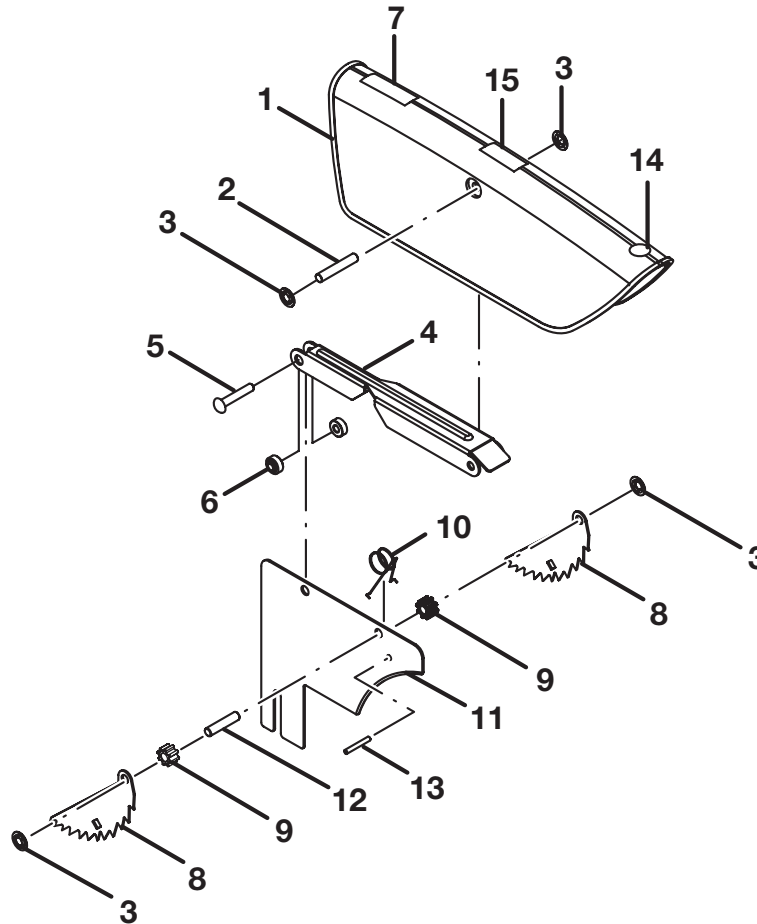


FIGURE D

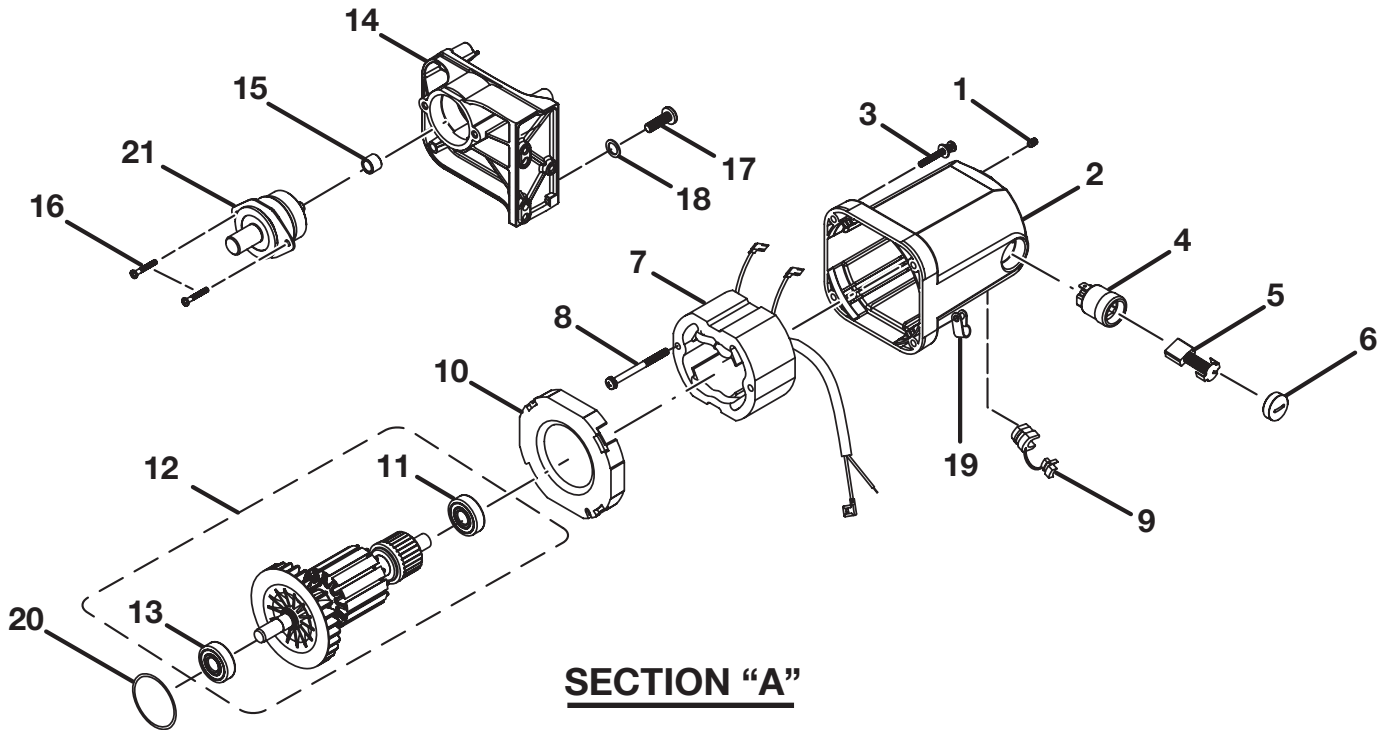
PARTS LIST FOR FIGURE D

KEY NO.	PART NUMBER	DESCRIPTION	QTY.
	089110110700	BLADE GUARD ASSEMBLY (INC. KEY NOS 1-15).....	1
1	089110110020	BLADE GUARD.....	1
2	414050004	DOWEL PIN (5/16 in. x 45.5 mm)	1
3	411101702	LOCKING NUT (5/16 in.).....	4
4	0134010310	ARM.....	1
5	0134010913	RIVET.....	1
6	0134010207	ARM SHIM.....	2
7	9181015330203	LABEL.....	1
8	0181010303	ANTI-KICKBACK PAWLS	2
9	0134010208	SHIM (ANTI-KICKBACK PAWLS)	2
10	0121010914	TORSION SPRING	1
11	0134010311	SPREADER.....	1
12	414051701	PIN (5/16 x 34.5 mm).....	1
13	414011035	PIN (D5 x 32).....	1
14	9181015330202	WARNING LABEL.....	1
15	089110110900	BLADE ROTATION LABEL.....	1

* Standard Hardware Item – May Be Purchased Locally

RYOBI 10 in. TABLE SAW – MODEL NUMBER BTS21

The model number will be found on a plate attached to the motor housing. Always mention the model number in all correspondence regarding your **TABLE SAW** or when ordering repair parts.



SECTION "A"

PARTS LIST FOR SECTION "A"

KEY PART NO.	PART NUMBER	DESCRIPTION	QTY.	KEY PART NO.	PART NUMBER	DESCRIPTION	QTY.
	A134010104	MOTOR ASSEMBLY (INC. KEY NOS. 1-21).....	1	11	089110110026	BALL BEARING (6200ZZ C3, HVQ).....	1
1	410071005	* SOCKET SCREW (M5 x 8)	2	12	089110110707	ARMATURE ASSEMBLY (INC. KEY NOS. 11 AND 13)....	1
2	0134010201	MOTOR HOUSING.....	1	13	089110110027	BALL BEARING (6201ZW).....	1
3	410271701	* SCREW & WASHER (3/16-32 x 1-3/8 in. PAN HD.)..	4	14	089110110708	GEAR BOX	1
4	0121010231	BRUSH TUBE.....	2	15	420110004	NEEDLE BEARING	1
5	0502025007	BRUSH (7 x 17 x 19/17)	2	16	089110110039	* SCREW/WASHER (M5 x 12 mm PAN HD.)	2
6	0121010238	BRUSH CAP	2	17	410174721	* SCREW (8-32 x 3/8 in. TRUSS HD.).....	1
7	A134010401	FIELD ASSEMBLY	1	18	412042002	WASHER	1
8	410581001	* SCREW/WASHER (M5 x 60 mm PAN HD.)	2	19	0121010242	WIRE CLAMP	1
9	451010003	STRAIN RELIEF	1	20	441010012	* "O" RING (D29.6 x 1.2T).....	1
10	0134010202	BAFFLE	1	21	A134010503	ARBOR ASSEMBLY	1

SECTION "A" REPRESENTS AN IMPORTANT PART OF THE DOUBLE INSULATED SYSTEM OF THIS TOOL. ANY REPAIR TO THIS TOOL REQUIRES DIELECTRIC TESTING TO INSURE CUSTOMER SAFETY AND TO COMPLY WITH COMPANY REQUIREMENTS.

* Standard Hardware Item – May Be Purchased Locally