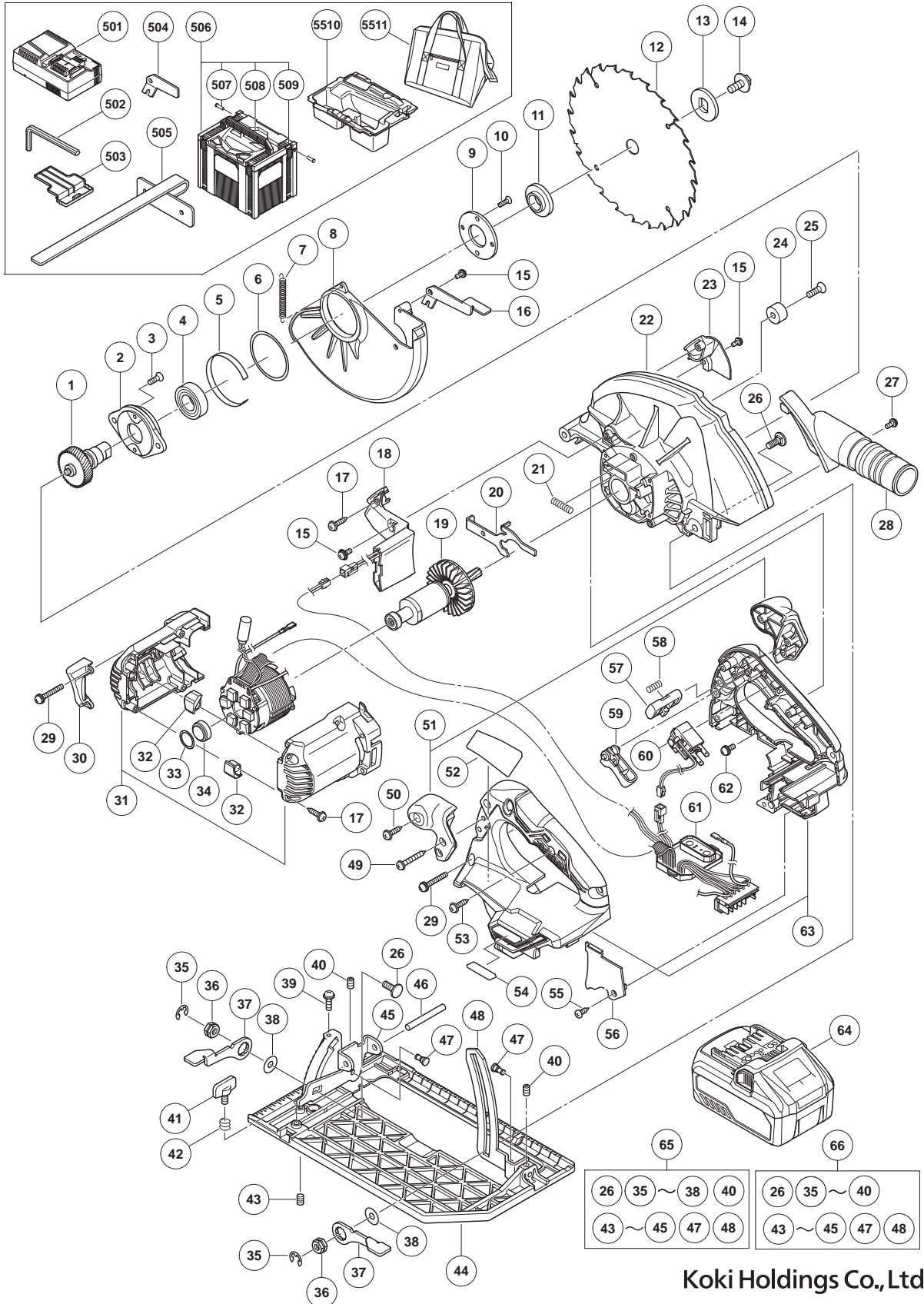


ELECTRIC TOOL PARTS LIST

CORDLESS CIRCULAR SAW Model C 3607DA

2018- 5 -25
(E1)



PARTS

C 3607DA

ITEM NO.	CODE NO.	DESCRIPTION	NO. USED	REMARKS
1	373643	SPINDLE GEAR	1	
2	373810	BEARING HOLDER	1	
3	992013	SEAL LOCK FLAT HD. SCREW M5 X 14	2	
4	6003VV	BALL BEARING 6003VVCMP2L	1	
5	373811	BUSH	1	
6	370591	WASHER	1	
7	373011	RETURN SPRING	1	
8	373812	LOWER GUARD	1	
9	302435	BEARING COVER	1	
10	990430	SEAL LOCK FLAT HD. SCREW M4 X 10	2	
* 11	321639	WASHER (A)	1	
* 11	324597	WASHER (A)	1	FOR EUROPE,GBR
* 11	320970	WASHER (A)	1	FOR USA,CAN
* 12	302411	TCT SAW BLADE 185MM-D20 HOLE-NT18	1	
* 12	302412	TCT SAW BLADE 185MM-D30 HOLE-NT18	1	FOR EUROPE,GBR
* 12	373813M	TCT SAW BLADE 185MM-D16 HOLE-NT24	1	FOR USA,CAN
* 13	333555	WASHER (B)	1	
* 13	333556	WASHER (B)	1	FOR EUROPE,GBR
14	338917	HEX FLANGE BOLT	1	
15	935196	MACHINE SCREW (W/WASHERS) M4 X 12 (BLACK)	3	
16	328045	LEVER	1	
17	301653	TAPPING SCREW (W/FLANGE) D4 X 20 (BLACK)	5	
18	373644	LED	1	
19	361087	ROTOR	1	
20	338918	LOCK LEVER	1	
21	334225	SPRING	1	
* 22	373641	GEAR COVER	1	
* 22	373642M	GEAR COVER	1	FOR USA,CAN
23	373814	FLOW GUIDE (A)	1	
24	337080	CUSHION	1	
25	949794	FLAT HD. SCREW M6 X 20 (10 PCS.)	1	
26	372747	BOLT (SQUARE) M6	2	
* 27	935196	MACHINE SCREW (W/WASHERS) M4 X 12 (BLACK)	1	FOR EUROPE,GBR,AUS,NZL
* 28	372757	DUST COLLECTOR SET	1	INCLUD.27,504 FOR EUROPE,GBR,AUS,NZL
29	334141	MACHINE SCREW (W/WASHERS) M4 X 35 (BLACK)	6	
30	338919	FLOW GUIDE	1	
31	338902	HOUSING SET	1	
32	336554	CUSHION	2	
33	372734	WASHER (A)	1	
34	338928	RUBBER BUSHING	1	
35	670514	RETAINING RING (E-TYPE) FOR D10 SHAFT	2	
36	372746	LOCK NUT	2	
37	372745	LEVER	2	
38	320975	WASHER	2	
* 39	373010	SEAL LOCK SCREW (W/SP. WASHER) M4 X 14	1	FOR EUROPE,GBR
40	319541	SEAL LOCK HEX. SOCKET SET SCREW M5 X 6	2	
* 41	301806	WING BOLT M6 X 15	1	FOR EUROPE,GBR,AUS,NZL
* 42	947859	LOCK SPRING	1	FOR EUROPE,GBR,AUS,NZL
43	373815	SEAL LOCK HEX. SOCKET SET SCREW M6 X 10	1	
* 44	372741	BASE	1	

PARTS

C 3607DA

ITEM NO.	CODE NO.	DESCRIPTION	NO. USED	REMARKS	
*	44	372742	BASE	1	FOR EUROPE,GBR
	45	372744	BEVEL PLATE	1	
	46	949750	ROLL PIN D6 X 50 (10 PCS.)	1	
	47	320163	STEP PIN D6 X 13	2	
	48	372754	LINK	1	
	49	305490	TAPPING SCREW (W/FLANGE) D4 X 30 (BLACK)	2	
	50	301653	TAPPING SCREW (W/FLANGE) D4 X 20 (BLACK)	1	
	51	338934	SUB HANDLE	1	INCLUD.50
	52		NAME PLATE	1	
	53	307811	TAPPING SCREW (W/FLANGE) D4 X 16 (BLACK)	3	
	54		MV LABEL (A)	1	
	55	334333	TAPPING SCREW D3 X 12 (BLACK)	1	
	56	371909	HANDLE COVER (GREEN)	1	
	57	338901	KNOB	1	
	58	336650	SPRING	1	
	59	338899	TRIGGER	1	
	60	371907	SWITCH	1	
	61	341002	STATOR FET PCB ASS'Y	1	INCLUD.18
	62	305691	MACHINE SCREW (W/WASHERS) M4 X 14 (BLACK)	1	
	63	371908	HANDLE SET (GREEN)	1	
*	64	372120	BATTERY BSL 36B18 (EUROPE,AUS,NZL)	2	INCLUD.503
*	64	372121M	BATTERY BSL 36B18 (USA,CAN)	1	INCLUD.503
*	64	371750	BATTERY BSL 36A18 (EUROPE,AUS,NZL)	2	INCLUD.503
*	64	373320	BATTERY BSL 36A18 (CHN)	2	INCLUD.503
*	65	373816	BASE	1	INCLUD.26,35-38,40,43-45,47,48 EXCEPT FOR EUROPE,GBR
*	66	373817	BASE	1	INCLUD.26,35-40,43-45,47,48 FOR EUROPE,GBR

STANDARD ACCESSORIES

C 3607DA

ITEM NO.	CODE NO.	DESCRIPTION	NO. USED	REMARKS
501		CHARGER (MODEL UC 18YSL3)	1	
502	944459	HEX. BAR WRENCH 5MM	1	
503	329897	BATTERY COVER	2	
* 504		LEVER	1	FOR EUROPE,GBR,AUS,NZL
* 505	302691	GUIDE	1	FOR EUROPE,GBR,AUS,NZL
* 506	337528	CASE ASS'Y (STACKABLE 4)	1	INCLUD.507-509
* 507	336474	HINGE	2	
* 508	336473	HANDLE	1	
* 509	336472	LATCH	4	
* 510	373646	INNER TRAY	1	
* 511	373645M	TOOL BAG	1	FOR USA,CAN

OPTIONAL ACCESSORIES

ITEM NO.	CODE NO.	DESCRIPTION	NO. USED	REMARKS
* 601	302691	GUIDE	1	EXCEPT FOR EUROPE,GBR,AUS,NZL
* 602	372757	DUST COLLECTOR SET	1	INCLUD.27,504
				EXCEPT FOR EUROPE,GBR,AUS,NZL