



LIST NO. 0555

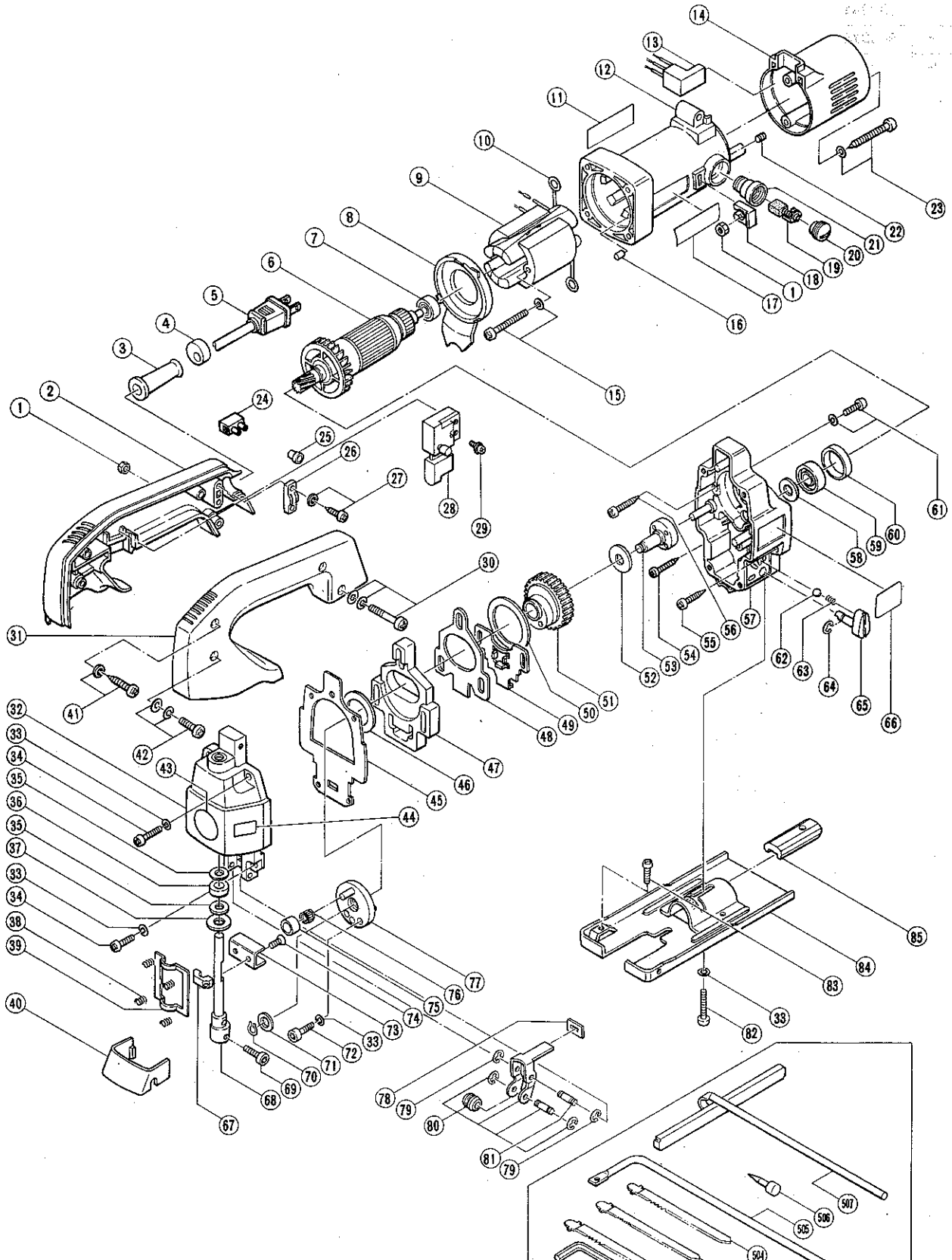
# ELECTRIC TOOL PARTS LIST

**ELECTRONIC JIG SAW**

1984.8.10

**Model CJ65V**

**CJ65V(E1)**



## PARTS

CJ65V(E1)

Item No.	Code No.	Parts Name	Q'ty	Remarks
1	949554Z	Nut M4	3	(10 pcs.)
2	963372	Handle (A)	1	
3	953327	Cord Armor	1	
4	940928	Wrench Holder	1	
5	—	Cord	1	See alternative parts
6	963638C	Armature 110V ~ 115V	1	
7	939291	Ball Bearing (608VVC2)	1	
8	963374	Fan Guide	1	
9	963637C	Stator Ass'y 110V ~ 115V	1	includ. 10
10	930630	Brush Terminal	2	
11	—	Name Plate	1	
12	963340	Housing Ass'y	1	includ. 21, 22
13	963377	Control Circuit	1	
14	963375	Tail Cover	1	
15	986541	⊕Hd. Machine Screw M4 x 60	2	w/Spring Lock Washer
16	931701	Bearing Lock	1	
17	950565	HITACHI Label	1	
18	963341	Nut Cover	2	
19	—	Carbon Brush	2	See alternative parts
20	937847	Brush Cap	2	
21	937846	Brush Holder	2	
22	963383	Hexagon Socket Hd. Set Screw M4 x 8	2	
23	963388	⊕Hd. Tapping Screw D4 x 60	2	w/Washer
24	—	Pillar Terminal	1	See alternative parts
25	939310Z	Connector (50091)	1	(10 pcs.)
26	960266	Cord Clip	1	
27	930446	⊕Hd. Tapping Screw D4 x 16	2	w/Washer
28	957747	Single Pole Switch (Screw Type)	1	w/Lock
29	980060	⊕Hd. Machine Screw M3.5 x 5	2	w/Washer
30	963387	⊕Hd. Machine Screw M4 x 30	1	w/Spring Lock Washer, Washer
31	963373	Handle (B)	1	
32	963353	Upper Cover Ass'y	1	includ. 35~37
33	949453Z	Spring Lock Washer	7	for M4 (10 pcs.)
34	949219Z	⊕Hd. Machine Screw M4 x 16	4	(10 pcs.)
35	963356	Washer (C)	2	
36	963354	Felt (A)	1	
37	963355	Washer (D)	1	
38	963362	Spring	4	
39	963361	Plate	1	
40	963376	Chip Cover	1	
41	956636	⊕Hd. Tapping Screw D4 x 25	2	w/Washer
42	954878	⊕Hd. Machine Screw M4 x 16	2	w/Spring Lock Washer, Washer
43	962994	Mark Plate	1	
44	—	Caution Plate	1	See alternative parts
45	963352	Packing	1	
46	963349	Washer (A)	1	
47	963348	Balance Weight	1	
48	963345	Orbital Cam (A)	1	
49	963346	Orbital Cam (B)	1	
50	963347	Washer (A)	1	
51	963344	Gear	1	

## PARTS

CJ65V(E1)

Item No.	Code No.	Parts Name	Q'ty	Remarks
54	958705	⊕Hd. Tapping Screw D4 x 25	1	
55	956384	⊕Hd. Tapping Screw D4 x 20	1	
56	954015	⊕Hd. Tapping Screw D4 x 35	2	
57	963342	Gear Cover	1	
58	958246	Felt Packing	1	
59	939465	Ball Bearing (629DD)	1	
60	957754	Rubber Ring	1	
61	991207	⊕Hd. Machine Screw M4 x 8	4	(Seal Lock Screw) w/Spring Lock Washer
62	939363Z	Steel Ball D3.969	1	(10 pcs.)
63	982454	Spring (C)	1	
64	673489	E-Type Retaining Ring	1	for Shaft 5 MM
65	963368	Change Knob	1	
66	963380	Orbital Label	1	
67	963359	Connector Holder	1	
68	963357	Plunger Ass'y	1	includ. 69
69	973563	Hexagon Socket Hd. Bolt M4 x 8	1	
70	940079	C-Type Retaining Ring	1	for Shaft 8 MM
71	963351	Washer (B)	1	
72	876325	Hexagon Socket Hd. Bolt M4 x 12	2	
73	963358	Connector	1	
74	963360	⊕Flat Hd. Screw M4 x 8	2	(made of stainless steel)
75	940916	Connecting Piece	1	
76	940917	Needle Roller (K6/8)	1	
77	963350	Weight Holder	1	
78	963367	Felt (B)	1	
79	874759	E-Type Retaining Ring	2	for Shaft 2.5 MM
80	963363	Guide Roller	1	
81	963366	Holder Pin	1	
82	949699Z	Hexagon Socket Hd. Bolt M4 x 20	1	(10 pcs.)
83	949235Z	⊕Hd. Machine Screw M5 x 8	1	(10 pcs.)
84	963370	Base	1	
85	963371	Base Locker	1	

## ALTERNATIVE PARTS

Item No.	Code No.	Parts Name	Q'ty	Remarks
5	500212Z	Cord 110V	1	
	500240Z	Cord 115V	1	for U.S.A.
19	999084	Carbon Brush	2	Auto stop type for U.S.A. (2 pcs.)
	999021	Carbon Brush	2	for Taiwan (2 pcs.)
24	938307Z	Pillar Terminal	1	for U.S.A.
44	963646	Caution Plate (English)	1	for U.S.A.

