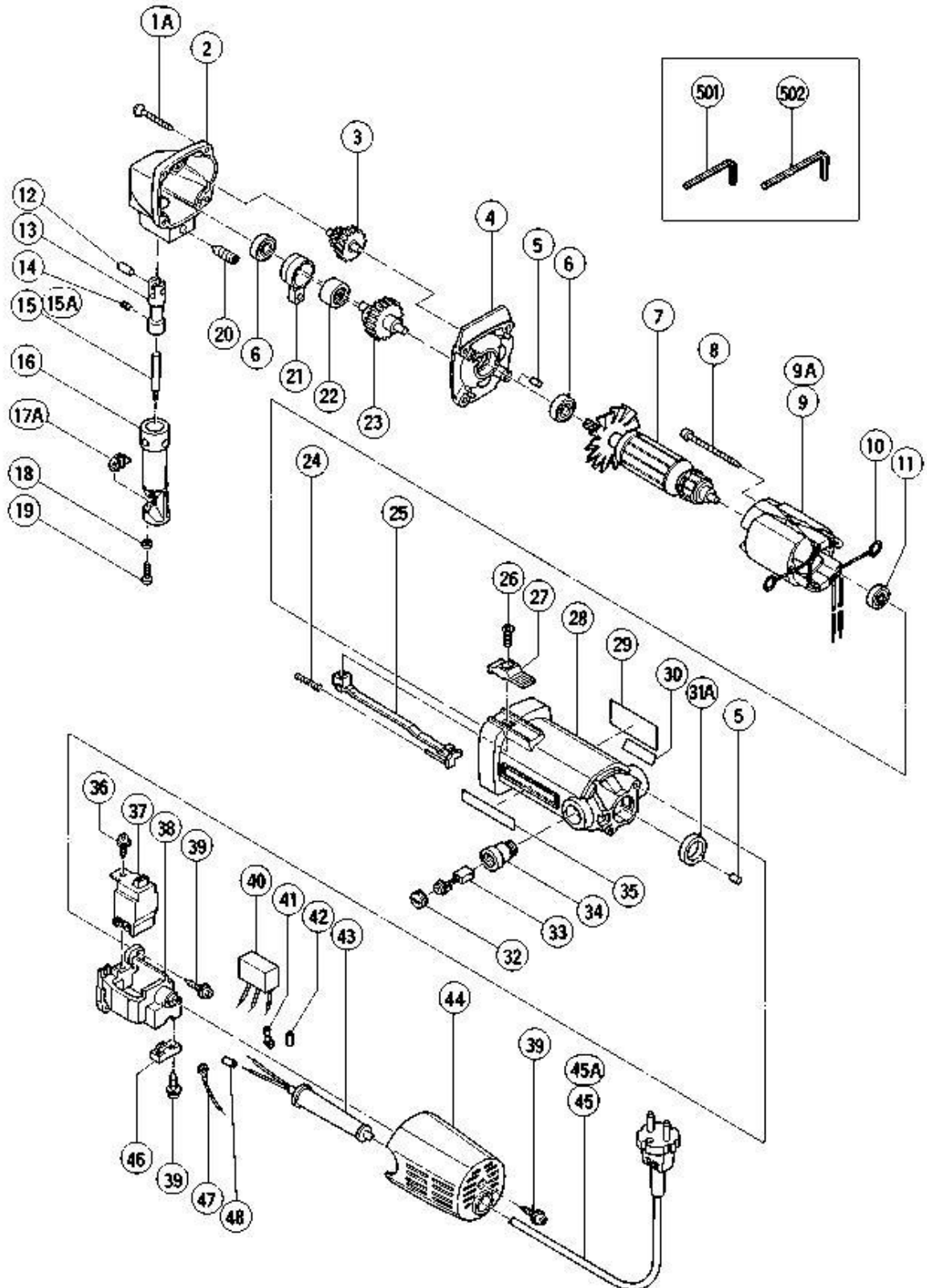


ELECTRIC TOOL PARTS LIST

■ NIBBLER
Model CN 16

1998 · 4 · 30
(E4)



Parts List

CN16

Item #	Code #	DESCRIPTION	NO USED	Remarks
1A	957-580	TAPPING SCREW D5X30	4	
2	998-033	GEAR COVER	1	
3	998-036	SECOND PINION	1	
4	998-032	INNER COVER	1	
5	931-701	BEARING LOCK	2	TILL 1997.6 COMMUTATOR SIDE
5	931-701	BEARING LOCK	1	SINCE 1997.7
6	608-VVM	BALL BEARING 608VVC2PS2L	2	
7	360-098U	ARMATURE ASS'Y 110V-127V	1	INCLUD.6,11
8	954-642	TAPPING SCREW D4X60	2	
9	340-127C	STATOR ASS'Y 110V-115V	1	INCLUD.10
10	930-630	BRUSH TERMINAL	2	
11	626-VVM	BALL BEARING 626VVC2PS2L	1	
12	993-546	PIN D6	1	
13	998-034	PISTON	1	
14	998-037	HEX. SOCKET SET SCREW M5X6	1	
15	998-030	PUNCH	1	
16	998-038	DIE HOLDER	1	
17A	998-039	DIE ASS'Y	1	INCLUD.18,19
18	949-451	SPRING WASHER M3 (10 PCS.)	2	
19	949-206	MACHINE SCREW M3X14 (10 PCS.)	2	
20	998-008	HEX. SOCKET SET SCREW M8X20	1	
21	998-004	CONNECTING ROD ASS'Y	1	INCLUD.22
22	993-163	NEEDLE BEARING (M152112)	1	
23	998-035	SPINDLE	1	
24	938-299	SPRING	1	
25	982-033	SLIDE BAR	1	
26	949-323	FLAT HD. SCREW M4X12 (10 PCS.)	1	
27	938-312	SLIDE KNOB (B)	1	
28	982-020	HOUSING ASS'Y	1	INCLUD.34
29		NAME PLATE	1	
30		LABEL	1	FOR FRA
31A	982-023	BEARING BUSHING	1	
32	937-847	BRUSH CAP	2	
33	999-021	CARBON BRUSH (1 PAIR)	2	
34	937-846	BRUSH HOLDER	2	
35	957-561	HITACHI LABEL	1	
36	982-034	TAPPING SCREW (W/WASHER) D4X12	1	
37	980-778	SLIDE SWITCH (2P PILLAR TYPE)	1	
38	982-044	SWITCH HOLDER	1	
39	984-750	TAPPING SCREW (W/FLANGE) D4X16	5	
42	981-373	TUBE (D)	2	FOR NOISE SUPPRESSOR
43	953-327	CORD ARMOR D8.8	1	
44	982-035	TAIL COVER	1	
45	500-240Z	CORD	1	(CORD ARMOR D8.8) FOR USA,CAN
46	960-266	CORD CLIP	1	
48	981-373	TUBE (D)	2	FOR CORD

Parts List

CN16

Item #	Code #	DESCRIPTION	NO USED	Remarks
501	990-666	HEX. BAR WRENCH 2.5MM	1	
502	944-458	HEX. BAR WRENCH 4MM	1	

Parts are subject to change without any obligation on the part of the HITACHI due to improvements.