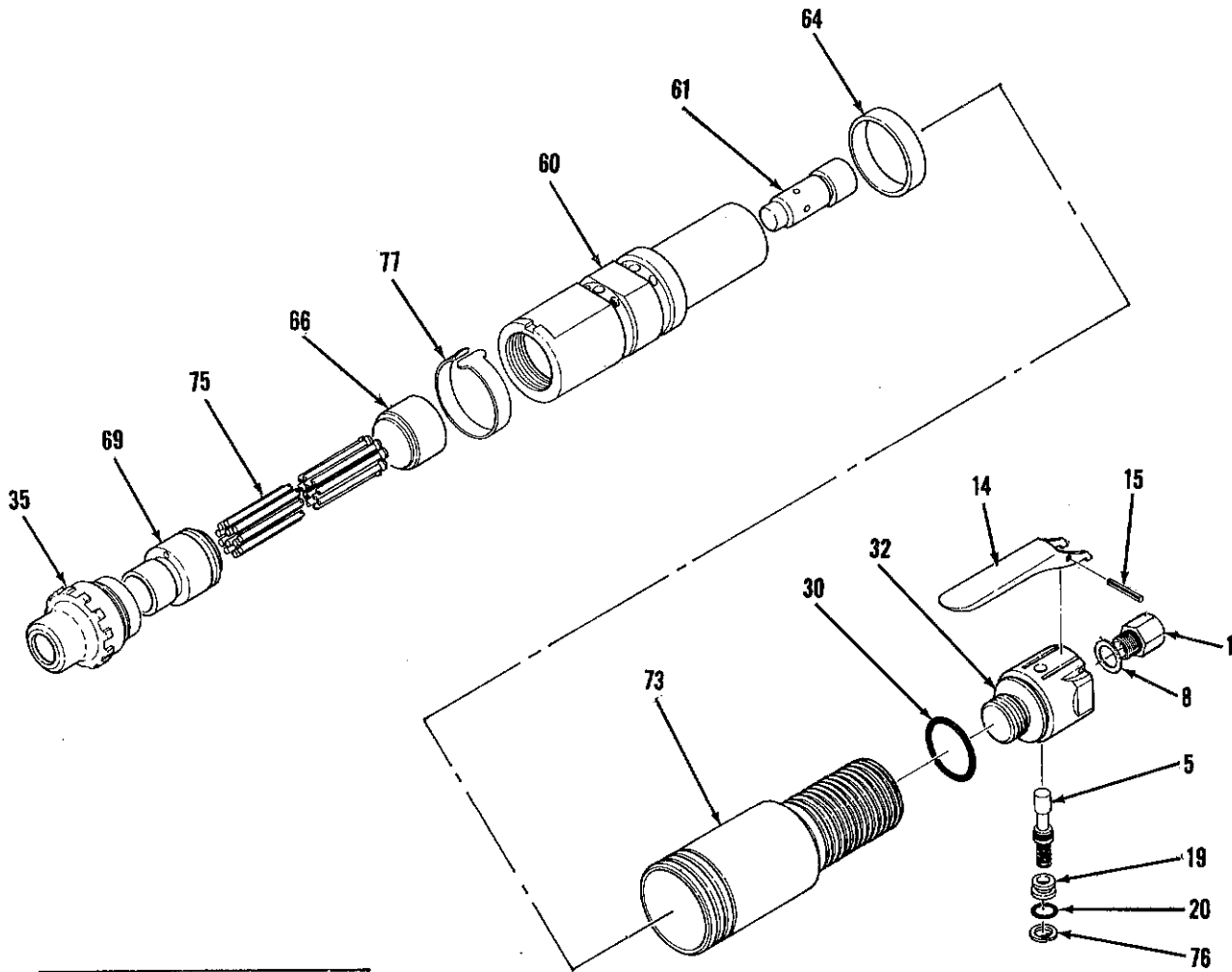


CP0951 NEEDLE SCALER Model "L"



All Threads Are Right Hand Unless Otherwise Specified.

Index No.	CP Part No.	Description	No. Req'd
1	NP123898	Bushing-Air Inlet (M16 x NPTF 3/8")	1
5	NP138044	Throttle Valve Assembly	1
8	NP123899	Gasket-Bushing	1
14	NP131783	Throttle Lever Assembly (Incl. Index No. 15)	1
15	NP123891	Pin-Roll	1
19	NP138045	Seat-Spring	1
20	NP138046	"O" Ring (S-10)	1
30	C136799	"O" Ring (G-30)	1
32	NP138047	Body-Valve	1
35	NP138048	Ring-Lock	1

Index No.	CP Part No.	Description	No. Req'd
60	NP138049	Cylinder Assembly	1
	C132813	Wrench-Spanner	1
61	NP123887	Piston	1
64	NP138050	Stopper	1
66	NP123882	Anvil	1
69	NP138051	Support-Needle (3MM)	1
73	NP138052	Cover	1
75	NP123901	Set-Needle (3MM) (Consists of 12 Steel Needles)	1
76	NP138053	Ring-Retaining (C-12)	1
77	NP138054	Band-Safety	1

Maintenance

Do not penalize the operator by requiring him to use a tool which is not in first class condition. Regular inspection and immediate repair or minor faults will avoid more extensive future repairs and maintain the tool at its highest efficiency.

1. Keep tool properly lubricated.
2. Provide 90 psig (6.2 bar) of clean, dry air AT THE TOOL.
3. Set up and maintain a repair and replacement program scheduled at regular intervals.

Avoid storing the tool in a location subject to high humidity. If the tool is left as it is used, residual moisture on the inside can cause rusting. Before storing, and after operation pour about one teaspoonful of recommended oil into the tool air inlet and run for a short time.

When ordering spare parts, give Name, Speed or Size, Model and Serial Number of the tool and Part Number and Description of each part desired.