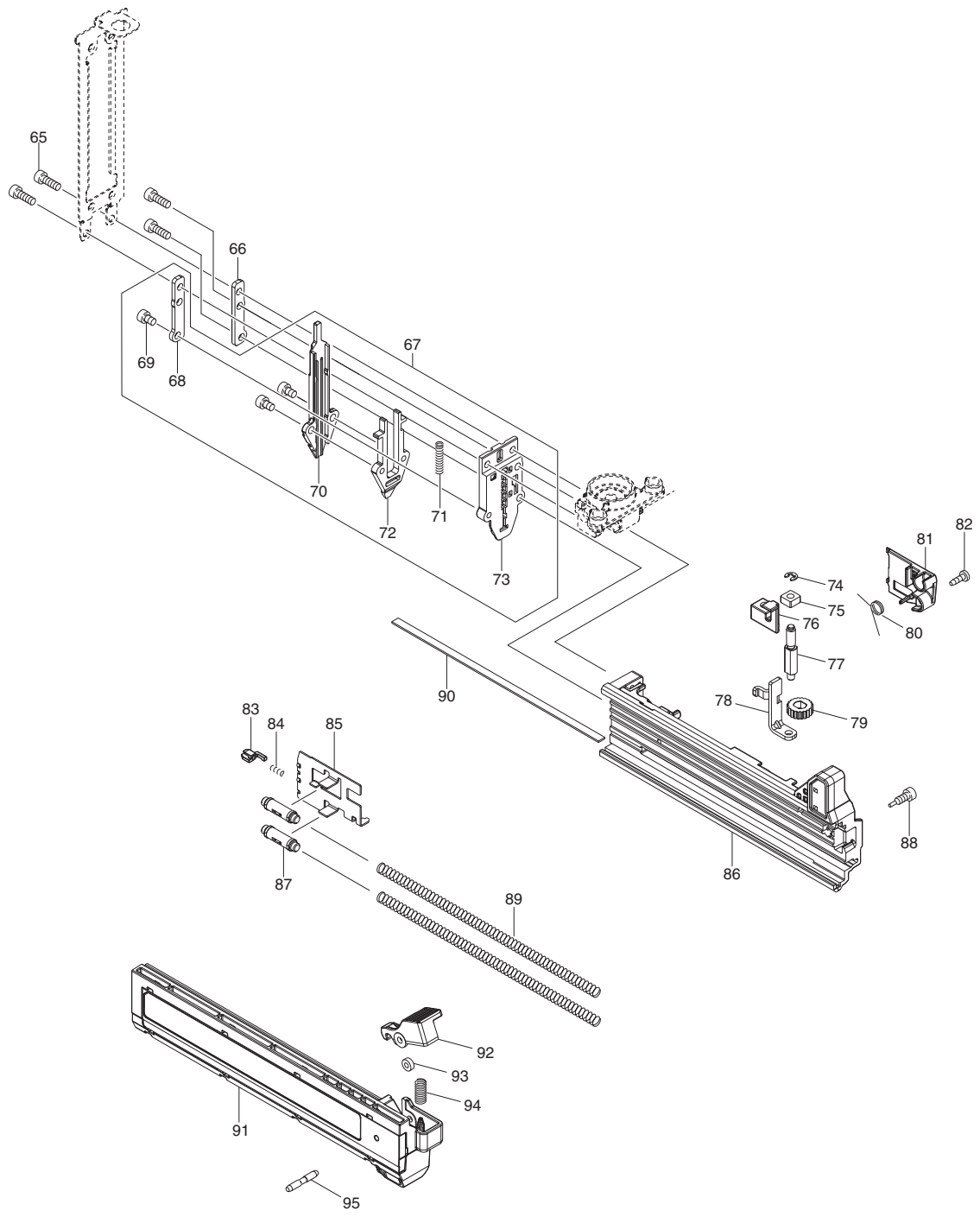


DFN350 1/2



Item No.	Type	Sub	Part No.	Description	Qty	Unit
001			183L67-6	HOUSING SET	1	SE
		INC.	263005-3	RUBBER PIN 6	2	PC.
		INC.	252126-6	HEX. LOCKING NUT M4-7	2	PC.
		INC.	931102-0	HEX. NUT M4		
002			855T69-7	DFN350 NAME PLATE	1	PC.
003			911173-3	PAN HEAD SCREW M4X45	1	PC.
004			266130-9	TAPPING SCREW BIND PT 3X16	1	PC.
005			457385-9	HOUSING R COVER	1	PC.
006			266130-9	TAPPING SCREW BIND PT 3X16	7	PC.
007			911118-1	PAN HEAD SCREW M4X12	2	PC.
008			620507-6	LED CIRCUIT	1	PC.
009			632N39-5	CONTROLLER UNIT	1	PC.
010			643860-3	TERMINAL	1	PC.
011			855T76-0	DFN350 SERIAL NO. LABEL	1	PC.
012			632G60-2	SWITCH UNIT	1	PC.
013			456799-9	TRIGGER LOCK	1	PC.
014			651910-0	SWITCH D2VW-01-3HS	1	PC.
015			232370-1	COMPRESSION SPRING 5	1	PC.
016			457386-7	TRIGGER	1	PC.
017			632K06-2	SWITCH UNIT	1	PC.
019			915101-0	BINDING HEAD SCREW M4X6	4	PC.
020			459369-3	FRONT COVER	1	PC.
021			347528-0	UPPER PLATE	1	PC.
022			256882-0	FLAT FILLISTER HD. PIN 4	1	PC.
023			347519-1	DRIVER	1	PC.
024			347521-4	RAIL	1	PC.
025			310924-5	COUNTER WEIGHT A	2	PC.
026			310925-3	COUNTER WEIGHT B	2	PC.
027			251566-5	H.S.H BOLT M4X6 WITH W	2	PC.
028			347146-4	PINION GUIDE	2	PC.
029			457390-6	COUNTER WEIGHT HOLDER	4	PC.
030			136104-3	SPUR GEAR ASSEMBLY	2	PC.
032			326902-5	PINION SHAFT	2	PC.
033			266199-3	HEX.SOCKET HEAD BOLT M4X6	4	PC.
034			347145-6	GUIDE RAIL R	1	PC.
035			347144-8	GUIDE RAIL L	1	PC.
036			326903-3	GUIDE BOLT	1	PC.
037			347526-4	BOTTOM PLATE	1	PC.
038			459311-4	SPRING HOLDER	1	PC.
039			347522-2	SPRING BASE	1	PC.
040			232511-9	COMPRESSION SPRING 17	1	PC.
041	2		347657-9	HAMMER	1	PC.
042			422457-9	CUSHION	1	PC.
043			253804-1	FLAT WASHER 6	1	PC.
044			266130-9	TAPPING SCREW BIND PT 3X16	1	PC.
045			319824-6	HOLDER	1	PC.
046			252273-3	HEX. NUT M6	1	PC.
047			347527-2	COUNTER STOPPER	1	PC.
048			422456-1	COUNTER CUSHION	2	PC.
049			326904-1	WEIGHT	2	PC.
050			232363-8	COMPRESSION SPRING 7	2	PC.
051			327328-4	GUIDE PIPE	2	PC.
052			347525-6	GEAR PLATE	1	PC.

Item No.	Type	Sub	Part No.	Description	Qty	Unit
053			266901-4	TAPPING SCREW 4X14	1	PC.
054			140K45-3	SPUR GEAR 61 COMPLETE	1	PC.
055			347139-1	LOCK ARM	1	PC.
056			327327-6	LOCK PIN	1	PC.
057			253353-8	THIN WASHER 10	1	PC.
058			140K48-7	SPUR GEAR 8 COMPLETE	1	PC.
059			310945-7	LOCK BLOCK	1	PC.
060			232513-5	COMPRESSION SPRING 3	1	PC.
061			221961-3	SPUR GEAR 27	3	PC.
062			227166-3	INTERNAL GEAR 69	1	PC.
063			267053-4	FLAT WASHER 12	1	PC.
064			629408-5	DC MOTOR	1	PC.
065			922117-8	HEX. SOCKET HEAD BOLT M4X12	4	PC.
066			347523-0	PLATE	1	PC.
067			127291-9	DRIVER GUIDE ASSEMBLY	1	PC.
		INC.		Item No. 68-73		
068			347523-0	PLATE	1	PC.
069			922102-1	HEX. SOCKET HEAD BOLT M4X6	3	PC.
070			310942-3	DRIVER GUIDE	1	PC.
071			232512-7	COMPRESSION SPRING 3	1	PC.
072			310943-1	CENTER PLATE	1	PC.
073			310941-5	SET PLATE	1	PC.
074			961017-7	STOP RING E-3	1	PC.
075			264050-1	SQUARE NUT M5-8	1	PC.
076	2		412237-1	CONTACT ARM	1	PC.
077			327326-8	ADJUSTER SHAFT	1	PC.
078			347529-8	ARM	1	PC.
079			459310-6	ADJUSTER	1	PC.
080			232514-3	TORSION SPRING 7	1	PC.
081			459312-2	ADJUSTER COVER	1	PC.
082			266007-8	TAPPING SCREW BIND PT 3X10	1	PC.
083			310176-8	STOPPER	1	PC.
084			233018-8	COMPRESSION SPRING 3	1	PC.
085			347520-6	PUSHER	1	PC.
086			459305-9	MAGAZINE	1	PC.
087			459313-0	SLEEVE	2	PC.
088			265A52-6	HEX.SOCKET HEAD BOLT M4X14	1	PC.
089			234325-2	COMPRESSION SPRING 6	2	PC.
090			346774-2	NAIL PLATE	1	PC.
091			140K96-6	SLIDE DOOR COMPLETE	1	PC.
		INC.				
			819J51-0	CAUTION LABEL	1	PC.
092			457388-3	LEVER	1	PC.
093			262054-7	URETHANE RING 3	1	PC.
094			233117-6	COMPRESSION SPRING 6	1	PC.
095			256877-3	PIN 3	1	PC.
<hr/>						
A01			195246-2	SAFETY GOGGLE	1	PC.
A02			251314-2	+ SCREW M4X12 F/HOOK	1	PC.
A03			346449-3	HOOK	1	PC.
A04			422464-2	NOSE ADAPTER	1	PC.
A05			783201-2	HEX. WRENCH 3	1	PC.