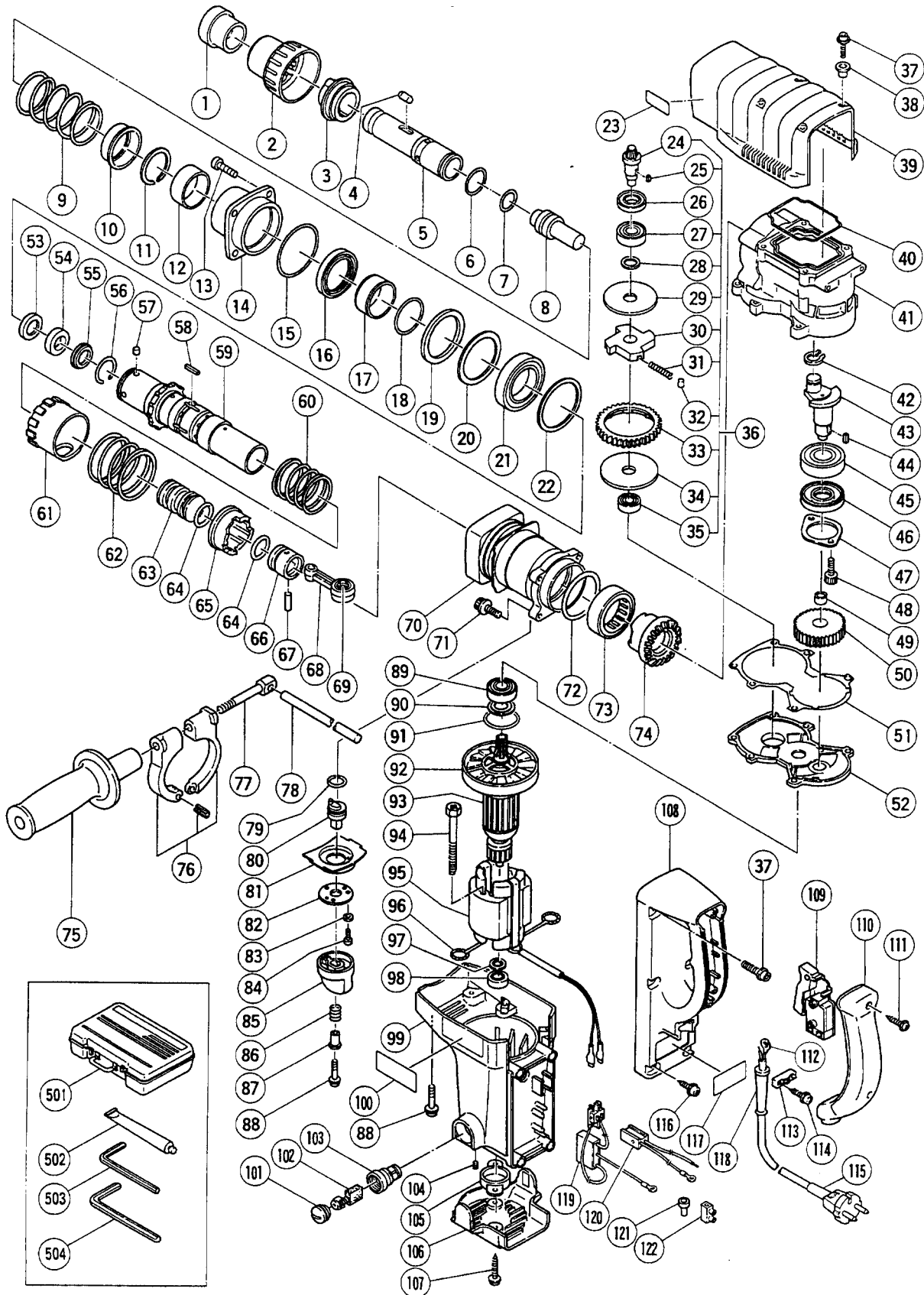


ELECTRIC TOOL PARTS LIST

■ HAMMER DRILL
Model DH 40MA

1996 · 12 · 20
(E1)



PARTS

DH 40MA

ITEM NO.	CODE NO.	DESCRIPTION	NO. USED	REMARKS
1	313-415	FRONT CAP	1	
2	313-965	GRIP	1	
3	313-413	NEEDLE HOLDER	1	
4	313-421	NEEDLE ROLLER D8X20	2	
5	313-398	RETAINER SLEEVE	1	
6	313-397	O - RING (B)	1	
7	313-396	O - RING (C)	1	
8	313-395	SECOND HAMMER	1	
9	313-419	RETAINER SPRING	1	
10	313-422	SPRING HOLDER	1	
11	313-420	RETAINING RING D38	1	
12	313-418	SLEEVE (A)	1	
13	993-040	NYLOCK HIGH TENSION BOLT M7X25	4	
14	313-405	FRONT COVER	1	
15	956-996	O - RING (1AS - 60)	1	
16	313-404	OIL SEAL	1	
17	313-416	SLEEVE (B)	1	
18	313-417	O - RING (A)	1	
19	981-859	URETHANE RING	1	
20	313-406	WASHER	1	
21	313-423	BALL BEARING 6908DDUCM PS2 - L	1	
22	313-409	WASHER (A)	1	
23		SDS MAX LABEL	1	
24	313-052	BEVEL PINION	1	
25	944-109	FEATHER KEY 3X3X8	1	
26	313-050	OIL SEAL (A)	1	
27	600-2DD	BALL BEARING 6002DDUCMPS2S	1	
28	313-058	WASHER	1	
29	313-053	WASHER (A)	1	
30	313-055	GEAR HOLDER	1	
31	313-056	SPRING (C)	4	
32	313-057	NEEDLE PIN D6X6	4	
33	313-054	SECOND GEAR	1	
34	313-059	SPACER	1	
35	629-VVM	BALL BEARING 629VVMC2EPS2L	1	
36	313-051	SLIP CLUTCH ASS'Y	1	INCLUD.24,25,27 - 35
37	313-082	NYLOCK BOLT (W/FLANGE) M5X16	6	
38	991-711	DISTANCE PIECE (B)	4	
39	313-083	CRANK CASE COVER ASS'Y	1	INCLUD.38
40	313-084	RUBBER SEAL	1	
41	313-045	CRANK CASE	1	
42	939-542	RETAINING RING FOR D12 SHAFT (10 PCS.)	1	
43	313-046	CRANK SHAFT	1	
44	940-533	FEATHER KEY 3X3X10	1	
45	620-4VV	BALL BEARING 6204VVMCPS2S	1	
46	313-049	OIL SEAL (B)	1	
47	313-048	BEARING COVER	1	
48	878-181	NYLOCK HEX. SOCKET HD. BOLT M5X16	2	
49	939-299	NEEDLE BEARING (M661)	1	
50	313-047	FIRST GEAR	1	
51	313-139	SEAL PACKING	1	

*: ALTERNATIVE PARTS

PARTS

DH 40MA

ITEM NO.	CODE NO.	DESCRIPTION	NO. USED	REMARKS
52	313-088	GEAR COVER	1	
53	313-402	DAMPER WASHER	1	
54	313-401	DAMPER	1	
55	313-400	DAMPER HOLDER	1	
56	313-399	STOPPER RING	1	
57	313-057	NEEDLE PIN D6X6	4	
58	971-750	FEATHER KEY 3X3X20	2	
59	313-394	CYLINDER	1	
60	313-121	CLUTCH SPRING	1	
61	313-407	LOCK SLEEVE	1	
62	313-408	LOCK SPRING	1	
63	313-062	STRIKER	1	
64	986-104	O - RING	2	
65	981-956	CLUTCH	1	
66	981-885	PISTON	1	
67	980-708	PISTON PIN	1	
68	980-707	CONNECTING ROD ASS'Y	1	INCLUD.69
69	980-756	NEEDLE BEARING (NSK AJ50 1203)	1	
70	313-403	CYLINDER CASE	1	
71	993-041	NYLOCK BOLT (W/FLANGE) M6X25	4	
72	956-996	O - RING (1AS - 60)	1	
73	993-069	NEEDLE BEARING (B) (NTN HMK4520)	1	
74	313-115	BEVEL GEAR	1	
75	313-078	SIDE HANDLE	1	
76	313-079	HANDLE HOLDER	1	
77	313-080	HANDLE BOLT	1	
78	971-786	STOPPER ROD	1	
79	873-095	O - RING (P - 16)	1	
80	313-118	LEVER SHAFT	1	
81	313-412	UNDER COVER	1	
82	313-411	SHAFT COVER	1	
83	949-423	WASHER M4 (10 PCS.)	2	
84	880-630	NYLOCK HEX. SOCKET HD. BOLT M4X12	2	
85	313-410	LEVER	1	
86	307-605	SPRING	1	
87	313-424	SLEEVE	1	
88	313-077	NYLOCK BOLT (W/FLANGE) M5X25	7	
89	620-2VV	BALL BEARING 6202VVCMP2S	1	
90	980-700	DUST WASHER (B)	1	
91	313-089	O - RING	1	
92	971-097	FAN	1	
*	93	360-410U	ARMATURE ASS'Y 110V - 115V	1 INCLUD.89,90,92,97,98
*	93	360-410D	ARMATURE ASS'Y 127V	1 INCLUD.92
*	93	360-410E	ARMATURE ASS'Y 220V - 230V	1 INCLUD.92
*	93	360-410F	ARMATURE ASS'Y 240V	1 INCLUD.92
94	953-174	HEX. HD. TAPPING SCREW D5X55	2	
*	95	340-361C	STATOR ASS'Y 110V - 115V	1 INCLUD.96
*	95	340-361D	STATOR ASS'Y 127V	1 INCLUD.96
*	95	340-361E	STATOR ASS'Y 220V - 230V	1 INCLUD.96
*	95	340-361F	STATOR ASS'Y 240V	1 INCLUD.96
*	95	340-361K	STATOR ASS'Y 110V - 115V	1 INCLUD.96 FOR USA.CAN

* : ALTERNATIVE PARTS

PARTS

DH 40MA

ITEM NO.	CODE NO.	DESCRIPTION	NO. USED	REMARKS
*	95	340-361G	1	STATOR ASS'Y 220V - 230V INCLUD.96 FOR NZL,GBR(230V),SAF,ITA,FRG, FRA,BEL,HOR,DEN,FIN,SWE,AUT,NOR,ESP,SUI
	96	930-703	2	BRUSH TERMINAL
	97	313-086	1	DUST WASHER (A)
	98	629-VVM	1	BALL BEARING 629VVMC2EPS2L
	99	313-141	1	HOUSING ASS'Y INCLUD.103,104
	100		1	HITACHI LABEL
	101	945-161	2	BRUSH CAP
	102	981-612Z	2	CARBON BRUSH (AUTO STOP TYPE) (1 PAIR)
	103	958-900	2	BRUSH HOLDER
	104	938-477	2	HEX. SOCKET SET SCREW M5X8
	105	313-091	1	BEARING HOLDER
	106	313-090	1	TAIL COVER
	107	302-089	2	TAPPING SCREW (W/FLANGE) D5X20 (BLACK)
	108	313-095	1	HANDLE
	109	313-093	1	SWITCH (C) (2P SCREW TYPE W/O LOCK)
	110	313-096	1	HANDLE COVER
	111	301-653	2	TAPPING SCREW (W/FLANGE) D4X20 (BLACK)
*	112	992-810	1	TERMINAL
*	112	980-063	1	TERMINAL FOR SIN,SAF,NZL,NGU
*	113	960-266	1	CORD CLIP
*	113	981-987Z	1	CORD CLIP FOR SUI
	114	984-750	2	TAPPING SCREW (W/FLANGE) D4X16
*	115	500-239Z	1	CORD (CORD ARMOR D10.7)
*	115	500-235Z	1	CORD CORD ARMOR D8.2) FOR SUR,IND
*	115	500-422Z	1	CORD (CORD ARMOR D8.2) FOR SIN
*	115	500-394Z	1	CORD (CORD ARMOR D10.7) FOR SYR
*	115	500-439Z	1	CORD (CORD ARMOR D10.7) FOR AUS
*	115	500-454Z	1	CORD (CORD ARMOR D10.7) FOR GBR(110V)
*	115	500-446Z	1	CORD (CORD ARMOR D10.7) FOR GBR (230V)
*	115	500-232Z	1	CORD (CORD ARMOR D8.2) FOR SAF
*	115	500-227Z	1	CORD (CORD ARMOR D8.2) FOR NZL,NGU
*	115	500-390Z	1	CORD (CORD ARMOR D10.7) FOR FRA,ITA,FRG,BEL, HOL,DEN,FIN,SWE,AUT,NOR,ESP,CHN,KOR
*	115	500-391Z	1	CORD (CORD ARMOR D10.7) FOR SUI
*	115	311-953	1	CORD (CORD ARMOR D10.7) FOR USA,CAN
	116	305-558	4	TAPPING SCREW (W/FLANGE) D5X25 (BLACK)
	117		1	NAME PLATE
*	118	958-049	1	CORD ARMOR D8.2
*	118	940-778	1	CORD ARMOR D10.7
*	119	313-092	1	PLUG (A) W/O NOISE SUPPRESSOR
*	119	313-142	1	PLUG (A) W/NOISE SUPPRESSOR
*	119	313-144	1	PLUG (A) W/NOISE SUPPRESSOR FOR SUI
*	120	313-094	1	PLUG (B)
*	120	313-143	1	PLUG (B) FOR NZL,GBR,ITA,FRG,FRA,BEL,HOL,DEN,FIN, SWE,AUT,NOR,ESP,SUI,SAF
*	120	313-966	1	PLUG (B) FOR USA,CAN
*	121	959-141	1	CONNECTOR 50092 (10 PCS.)
*	122	938-307	1	PILLAR TERMINAL FOR NZL,GBR,ITA,FRG,FRA,BEL,HOL,DEN,FIN, SWE,AUT,NOR,ESP,SUI,SAF,USA,CAN

*: ALTERNATIVE PARTS

STANDARD ACCESSORIES

DH 40MA

ITEM NO.	CODE NO.	DESCRIPTION	NO. USED	REMARKS
501	313-097	CASE (PLASTIC)	1	
502	981-840	GREASE (A) FOR HAMMER.HAMMER DRILL (30G)	1	
503	944-458	HEX. BAR WRENCH 4MM	1	
504	944-459	HEX. BAR WRENCH 5MM	1	

OPTIONAL ACCESSORIES

ITEM NO.	CODE NO.	DESCRIPTION	NO. USED	REMARKS
601	313-448	DRILL BIT (SDS MAX) D16X340	1	
602	313-449	DRILL BIT (SDS MAX) D19X340	1	
603	313-450	DRILL BIT (SDS MAX) D22X320	1	
604	313-451	DRILL BIT (SDS MAX) D25X320	1	
605	313-452	DRILL BIT (SDS MAX) D28X370	1	
606	313-453	DRILL BIT (SDS MAX) D32X370	1	
607	313-454	DRILL BIT (SDS MAX) D38X370	1	
608	313-455	DRILL BIT (SDS MAX) D40X370	1	
609	313-456	DRILL BIT (SDS MAX) D16X540	1	
610	313-457	DRILL BIT (SDS MAX) D19X540	1	
611	313-458	DRILL BIT (SDS MAX) D22X520	1	
612	313-459	DRILL BIT (SDS MAX) D25X520	1	
613	313-460	DRILL BIT (SDS MAX) D28X570	1	
614	313-461	DRILL BIT (SDS MAX) D32X570	1	
615	313-462	DRILL BIT (SDS MAX) D38X570	1	
616	313-463	DRILL BIT (SDS MAX) D40X570	1	
617	944-460	TAPER SHANK DRILL BIT D11X100	1	
618	944-461	TAPER SHANK DRILL BIT D12.3X110	1	
619	993-038	TAPER SHANK DRILL BIT D12.7X110	1	
620	944-462	TAPER SHANK DRILL BIT D14.3X110	1	
621	944-500	TAPER SHANK DRILL BIT D14.5X110	1	
622	944-463	TAPER SHANK DRILL BIT D17.5X120	1	
623	313-464	TAPER SHANK ADAPTER ASS'Y (SDS MAX) NO.1	1	INCLUD.624
624	944-477	COTTER	1	
625	313-465	ADAPTER (SDS MAX) FOR SDS PLUS SHANK BIT	1	
626	955-994	CORE BIT 25MM	1	
627	955-995	CORE BIT 29MM	1	
628	955-996	CORE BIT 32MM	1	INCLUD.642
629	955-998	CORE BIT 35MM	1	INCLUD.643
630	956-000	CORE BIT 38MM	1	INCLUD.644
631	955-154	CORE BIT 45MM	1	INCLUD.645
632	959-706	CORE BIT 50MM	1	INCLUD.646
633	955-155	CORE BIT 54MM	1	INCLUD.647
634	959-707	CORE BIT 60MM	1	INCLUD.648
635	956-002	CORE BIT 64MM	1	INCLUD.649
636	959-708	CORE BIT 70MM	1	INCLUD.650
637	959-709	CORE BIT 75MM	1	INCLUD.651
638	955-157	CORE BIT 79MM	1	INCLUD.652
639	956-004	CORE BIT 94MM	1	INCLUD.653
640	959-710	CORE BIT 100MM	1	INCLUD.654
641	955-159	CORE BIT 105MM	1	INCLUD.655
642	955-997	GUIDE PLATE (FOR CORE BIT 32MM)	1	
643	955-999	GUIDE PLATE (FOR CORE BIT 35MM)	1	

* : ALTERNATIVE PARTS

