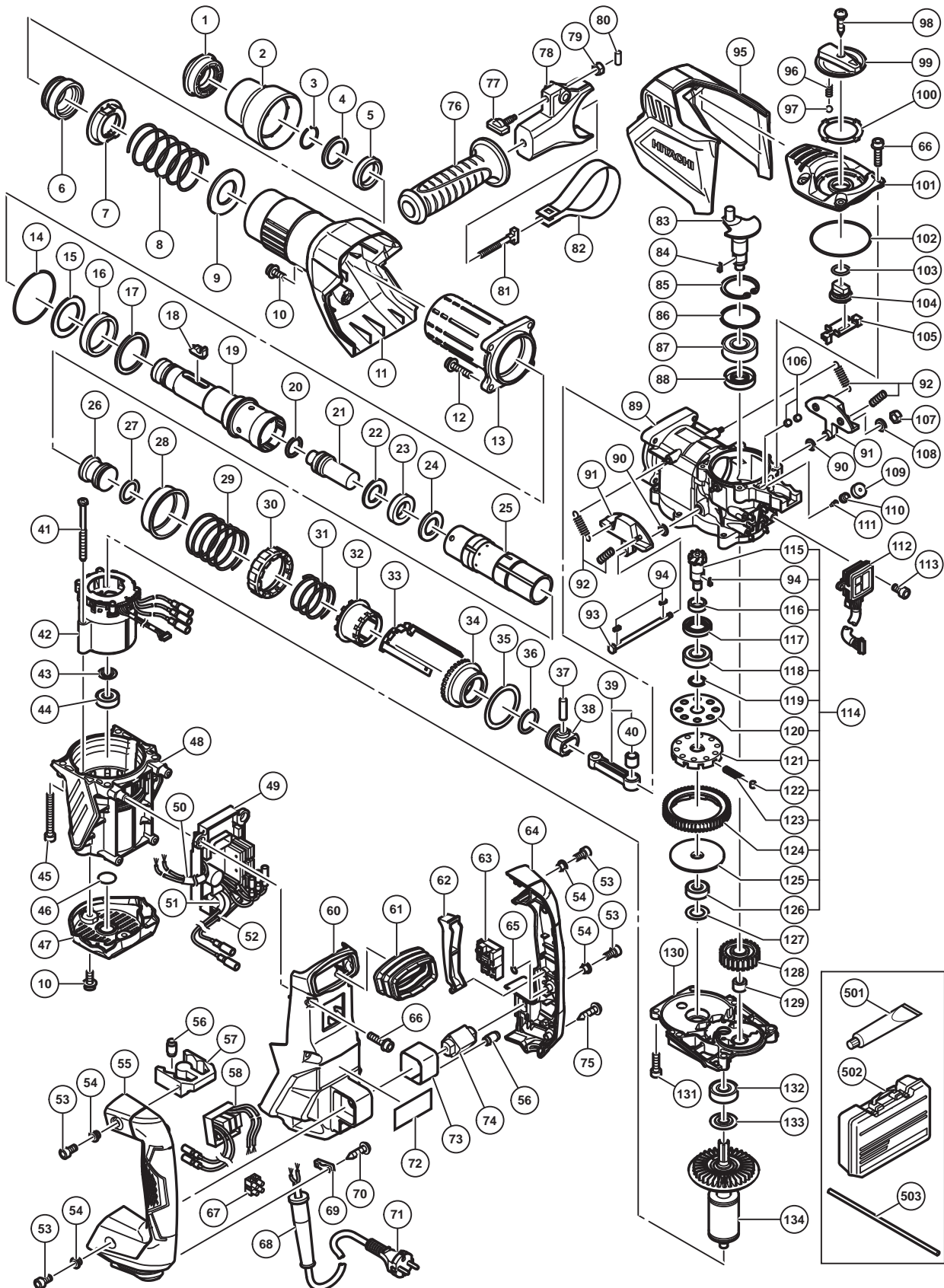


## ELECTRIC TOOL PARTS LIST

### HAMMER DRILL Model DH 40MEY

2014-12-23  
(E1)



**PARTS**

DH 40MEY

ITEM NO.	CODE NO.	DESCRIPTION	NO. USED	REMARKS
1	337562	FRONT CAP	1	
2	337560	GRIP	1	
3	318590	STOPPER RING	1	
4	337561	RETAINER WASHER	1	
5	337559	RETAINER DAMPER (A)	1	
6	337558	BIT LOCK HOLDER	1	
7	337555	THRUST PLATE	1	
8	337556	RETAINER SPRING	1	
9	337557	SPRING HOLDER (A)	1	
10	998471	HEX. SOCKET HD. BOLT (W/FLANGE) M5 X 12	3	
11	337553	CYLINDER CASE COVER	1	
12	991712	HEX. SOCKET HD. BOLT (W/FLANGE) M6 X 25	4	
13	337552	CYLINDER CASE	1	
14	956996	O-RING (1AS-60)	1	
15	337549	RETAINER DAMPER HOLDER	1	
16	337548	RETAINER DAMPER (B)	1	
17	337547	RETAINER DAMPER WASHER	1	
18	337554	BIT LOCK	2	
19	337536	RETAINER SLEEVE	1	
20	313396	O-RING (C)	1	
21	337537	SECOND HAMMER	1	
22	337538	DAMPER WASHER	1	
23	321835	DAMPER	1	
24	337539	DAMPER HOLDER	1	
25	337540	CYLINDER	1	
26	337541	STRIKER	1	
27	986104	O-RING	1	
28	337550	SPRING HOLDER (B)	1	
29	337551	LOCK SPRING	1	
30	331535	LOCK SLEEVE	1	
31	337542	CLUTCH SPRING	1	
32	337543	CLUTCH	1	
33	337544	SLIDER	1	
34	337545	BEVEL GEAR	1	
35	337546	THRUST WASHER	1	
36	986104	O-RING	1	
37	980708	PISTON PIN	1	
38	326369	PISTON	1	
39	337535	CONNECTING ROD ASS'Y	1	INCLUD.40
40	335303	NEEDLE BEARING	1	
41	953174	HEX. HD. TAPPING SCREW D5 X 55	2	
* 42	340884	STATOR SENSOR PCB SET 100V-127V	1	
* 42	340885E	STATOR SENSOR PCB SET 220V-240V	1	
43	958915	WASHER (A)	1	
44	629VVM	BALL BEARING 629VVC2PS2L	1	
45	986940	SEAL LOCK HEX. SOCKET HD. BOLT M6 X 45	4	
46	333263	DUST SEAL	1	
47	337584	TAIL COVER	1	
48	337582	HOUSING	1	
* 49	337579	CONTROLLER SET 100V-127V	1	

**PARTS**

DH 40MEY

ITEM NO.	CODE NO.	DESCRIPTION	NO. USED	REMARKS	
*	49	337580	CONTROLLER SET 220V-240V	1	
	50	322530	VINYL TUBE L55	1	
	51	322530	VINYL TUBE L55	1	
	52	321322	VINYL TUBE L35	1	
	53	991690	SEAL LOCK HEX. SOCKET HD. BOLT M5 X 12	4	
	54	991711	DISTANCE PIECE (B)	4	
	55	337590	HANDLE (B)	1	
	56	310124	HANDLE DAMPER	8	
	57	310123	TRANSATORY UNIT	1	
*	58	337585	FILTER PCB SET 100V-127V	1	
*	58	337586	FILTER PCB SET 220V-240V	1	
	60	337573	BACK COVER	1	
	61	337591	BELLOWS	1	
	62	337588	TRIGGER	1	
	63	337587	SWITCH	1	
	64	337589	HANDLE (A)	1	
	65	320218	O-RING	1	
	66	994192	HEX. SOCKET HD. BOLT (W/FLANGE) M5 X 16	10	
	67	958308Z	PILLAR TERMINAL (A)	1	
*	68	958049	CORD ARMOR D8.2	1	
*	68	940778	CORD ARMOR D10.7	1	
	69	960266	CORD CLIP	1	
	70	984750	TAPPING SCREW (W/FLANGE) D4 X 16	2	
*	71	500390Z	CORD	1	(CORD ARMOR D10.7)
*	71	500434Z	CORD	1	(CORD ARMOR D10.7) FOR USA,CAN,MEX
*	71	500446Z	CORD	1	(CORD ARMOR D10.7) FOR GBR (230V)
*	71	500465Z	CORD	1	(CORD ARMOR D10.7) FOR GBR (110V)
*	71	500439Z	CORD	1	(CORD ARMOR D8.2) FOR AUS
*	71	500408Z	CORD	1	(CORD ARMOR D8.2) FOR NZL
*	71	500235Z	CORD	1	(CORD ARMOR D8.2) FOR INA
*	71	500424Z	CORD	1	(CORD ARMOR D8.2) FOR MAL
	72		NAME PLATE	1	
	73	337574	HOLDER	1	
	74	326377	HANDLE SHAFT	1	
	75	301653	TAPPING SCREW (W/FLANGE) D4 X 20 (BLACK)	3	
	76	330209	SIDE HANDLE	1	
	77	337577	WING BOLT	1	
	78	337576	MOUNT	1	
	79	949556	NUT M6 (10 PCS.)	1	
	80	949859	ROLL PIN D2 X 8 (10 PCS.)	1	
	81	331247	HANDLE BOLT	1	
	82	337575	BAND	1	
	83	337531	CRANK SHAFT	1	
	84	940533	FEATHER KEY 3 X 3 X 10	1	
	85	948391	RETAINING RING FOR D40 HOLE	1	
	86	996363	O-RING (S-40)	1	
	87	6203DD	BALL BEARING 6203DDCMPS2L	1	
	88	321274	OIL SEAL (B)	1	
	89	337530	CRANK CASE	1	
	90	337571	WASHER	2	

**PARTS**

DH 40MEY

ITEM NO.	CODE NO.	DESCRIPTION	NO. USED	REMARKS
91	337569	WEIGHT	2	
92	337572	WEIGHT SPRING	4	
93	337570	WEIGHT SHAFT	1	
94	944109	FEATHER KEY 3 X 3 X 8	3	
95	337592	CRANK CASE COVER	1	
96	337567	LEVER SPRING	1	
97	959149	STEEL BALL D4.76 (10 PCS.)	1	
98	307811	TAPPING SCREW (W/FLANGE) D4 X 16 (BLACK)	1	
99	337566	CHANGE LEVER	1	
100	337568	GUIDE PLATE	1	
101	337564	CRANK COVER	1	
102	877315	CYLINDER O-RING (I.D 63.9)	1	
103	338312	O-RING	1	
104	337565	LEVER SHAFT	1	
105	337563	CHANGE PLATE	1	
106	338315	FELT (B)	2	
107	949555	NUT M5 (10 PCS.)	1	
108	949424	WASHER M5 (10 PCS.)	1	
109	338314	FELT (A)	1	
110	338313	CAP SCREW	1	
111	995396	VALVE	1	
112	337581	PANEL	1	
113	983162	SEAL LOCK HEX. SOCKET HD. BOLT M4 X 12	2	
114	337533	SLIP CLUTCH ASS'Y	1	INCLUD.94,115,116,118-126
115	337534	BEVEL PINION	1	
116	321279	COLLAR	1	
117	313050	OIL SEAL (A)	1	
118	6002DD	BALL BEARING 6002DDCMPS2L	1	
119	313058	WASHER	1	
120	313053	WASHER (A)	1	
121	321281	GEAR HOLDER	1	
122	320343	NEEDLE	10	
123	321282	SPRING (C)	10	
124	331215	SECOND GEAR	1	
125	321283	SPACER	1	
126	629VVM	BALL BEARING 629VVC2PS2L	1	
127	944525	BEARING WASHER (C)	1	
128	337532	FIRST GEAR	1	
129	939299	NEEDLE BEARING (M661)	1	
130	337583	GEAR COVER	1	
131	992803	SEAL LOCK HEX. SOCKET HD. BOLT M6 X 20	2	
132	6201DD	BALL BEARING 6201DDCMPS2L	1	
133	302429	DUST WASHER (B)	1	
134	337578	ROTOR	1	

**STANDARD ACCESSORIES**

DH 40MEY

ITEM NO.	CODE NO.	DESCRIPTION	NO. USED	REMARKS
501	981840	GREASE (A) FOR HAMMER.HAMMER DRILL (30G)	1	
502	337594	CASE (PLASTIC)	1	
503	971786	STOPPER ROD	1	

**OPTIONAL ACCESSORIES**

ITEM NO.	CODE NO.	DESCRIPTION	NO. USED	REMARKS
601	335782	GREASE FOR ROTARY HAMMER (60G)	1	
602	335781	GREASE FOR ROTARY HAMMER (500G)	1	
603	320859	SYRINGE (BLOW-OUT BULB TYPE)	1	
604	313448	DRILL BIT (SDS MAX) D16 X 340	1	
605	313456	DRILL BIT (SDS MAX) D16 X 540	1	
606	313449	DRILL BIT (SDS MAX) D19 X 340	1	
607	313457	DRILL BIT (SDS MAX) D19 X 540	1	
608	313450	DRILL BIT (SDS MAX) D22 X 320	1	
609	313458	DRILL BIT (SDS MAX) D22 X 520	1	
610	313451	DRILL BIT (SDS MAX) D25 X 320	1	
611	313459	DRILL BIT (SDS MAX) D25 X 520	1	
612	313452	DRILL BIT (SDS MAX) D28 X 370	1	
613	313460	DRILL BIT (SDS MAX) D28 X 570	1	
614	313453	DRILL BIT (SDS MAX) D32 X 370	1	
615	313461	DRILL BIT (SDS MAX) D32 X 570	1	
616	313454	DRILL BIT (SDS MAX) D38 X 370	1	
617	313462	DRILL BIT (SDS MAX) D38 X 570	1	
618	313455	DRILL BIT (SDS MAX) D40 X 370	1	
619	313463	DRILL BIT (SDS MAX) D40 X 570	1	
620	318085	SYRINGE (BELLOWS TYPE)	1	
621	944460	TAPER SHANK DRILL BIT D11 X 100	1	
622	944461	TAPER SHANK DRILL BIT D12.3 X 110	1	
623	993038	TAPER SHANK DRILL BIT D12.7 X 110	1	
624	944500	TAPER SHANK DRILL BIT D14.5 X 110	1	
625	944477	COTTER	1	
626	313465	ADAPTER (SDS MAX) FOR SDS PLUS SHANK BIT	1	
627	955994	CORE BIT 25MM	1	
628	955995	CORE BIT 29MM	1	
629	955996	CORE BIT 32MM	1	INCLUD.630
630	955997	GUIDE PLATE (FOR CORE BIT 32MM)	1	

**OPTIONAL ACCESSORIES**

DH 40MEY

ITEM NO.	CODE NO.	DESCRIPTION	NO. USED	REMARKS	
631	955998	CORE BIT 35MM	1	INCLUD.632	
632	955999	GUIDE PLATE (FOR CORE BIT 35MM)	1		
633	956000	CORE BIT 38MM	1	INCLUD.634	
634	956001	GUIDE PLATE (FOR CORE BIT 38MM)	1		
635	955154	CORE BIT 45MM	1	INCLUD.636	
636	955166	GUIDE PLATE (FOR CORE BIT 45MM)	1		
637	955155	CORE BIT 54MM	1	INCLUD.638	
638	955167	GUIDE PLATE (FOR CORE BIT 54MM)	1		
639	956002	CORE BIT 64MM	1	INCLUD.640	
640	956003	GUIDE PLATE (FOR CORE BIT 64MM)	1		
641	955157	CORE BIT 79MM	1	INCLUD.642	
642	955168	GUIDE PLATE (FOR CORE BIT 79MM)	1		
643	956004	CORE BIT 94MM	1	INCLUD.644	
644	956005	GUIDE PLATE (FOR CORE BIT 94MM)	1		
645	955159	CORE BIT 105MM	1	INCLUD.646	
646	955169	GUIDE PLATE (FOR CORE BIT 105MM)	1		
647	313466	CORE BIT SHANK (B) SDS MAX D25-35	1		
648	313467	CORE BIT SHANK (A) SDS MAX D38-150	1		
649	956009	CENTER PIN (B) 147L FOR CORE BIT D32-35	1		
650	955165	CENTER PIN (A) 133L FOR CORE BIT D38-150	1		
651	321813	DRILL CHUCK 13VLD-D	1		
652	313468	CHUCK ADAPTER (SDS MAX)	1		
653	303334	CHUCK HANDLE	1		
654	930515	CHUCK WRENCH 10G	1		
655	313469	CHEMICAL ANCHOR ADAPTER (SDS MAX) 12.7MM	1		
656	313470	CHEMICAL ANCHOR ADAPTER (SDS MAX) 19MM	1		
657	313471	BULL POINT (SDS MAX) 280L	1		
658	313472	BULL POINT (SDS MAX) 400L	1		
659	313473	COLD CHISEL (SDS MAX) 280MM	1		
660	313474	COLD CHISEL (SDS MAX) 400MM	1		
661	313475	CUTTER (SDS MAX) W50 X 400L	1		
662	313476	SCOOP (SDS MAX) 400L	1		
663	313478	RAMMER (SDS MAX) 150MM X 150MM	1		
664	313477	BUSHING TOOL (SDS MAX)	1		
665	313479	SHANK (SDS MAX) FOR RAMMER,BUSHING TOOL	1		