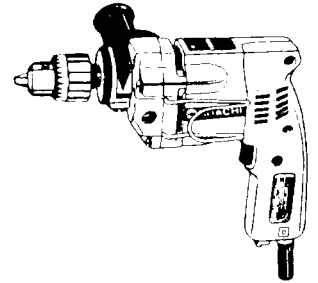
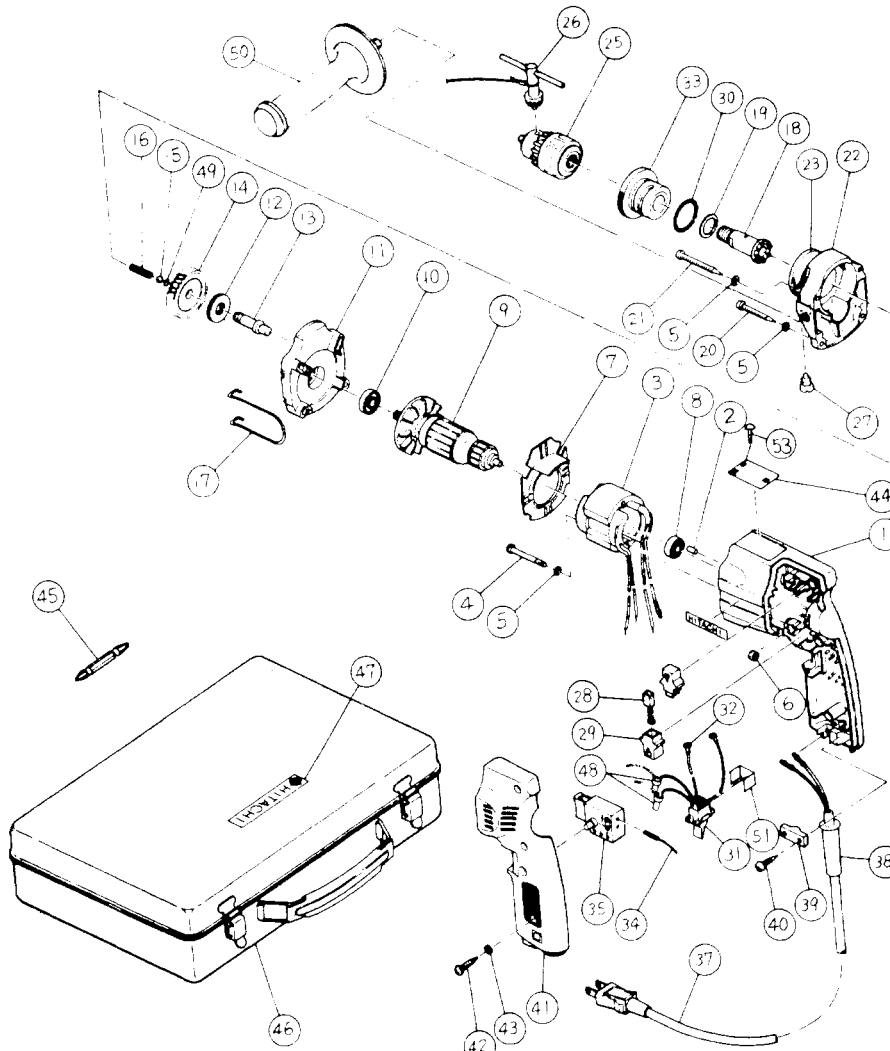




HITACHI

3/8" SUPER DRILL

Model DR-10



ITEM NO.	PART NO.	NO. USED	DESCRIPTION	SUPPLY Q'TY	ITEM NO.	PART NO.	NO. USED	DESCRIPTION	SUPPLY Q'TY
1	982591	1	Housing		28	999080Z	2	Carbon Brush	2
2	931701	1	Bearing Lock		29	955203	2	Brush Holder	
3	950502C	1	Stator		30	873731	1	O-Ring	
4	949228	2	Machine Screw M4x40	10	31	950520	1	Reversing Switch Assembly (includes item 32)	
5	949453	2	Spring Washer M4	10	32	960356	2	Terminal (A) D3.5	10
6	949554	2	Nut M4	10	33	950521	1	Clutch Ring Assembly (includes item 30)	
7	950504	1	Fan Guide		34	950522	1	Internal Wire	
8	626VVM	1	Ball Bearing 626VVMC2ERPS2S		35	986114	1	Speed Control Switch (C) w / lock	
9	950506C	1	Armature		37	500240Z	1	Cord Assembly w / o terminal	
10	608VVM	1	Ball Bearing 608VVMC2EPS2L		38	930487	1	Cord Armor D8.2	
11	950507	1	Inner Cover		39	937631	1	Cord Clip	
12	950508	1	Thrust Needle Bearing		40	954004	2	Tapping Screw D4x16	
13	950509	1	Gear Shaft		41	950527	1	Handle Cover	
14	950510	1	Gear		42	956384	3	Tapping Screw D4x20	
15	959154	1	Steel Ball D5.55	10	43	949423	3	Washer M4	10
16	943614	1	Spring (A)		44	-	1	Name Plate	
17	950511	1	Hook		45	955654	1	Driver Bit No.2 70mm	
18	950512	1	Spindle		46	950531Z	1	Case	
19	950513	2	Washer		47	945251	1	HITACHI Label	
20	950514	2	Tapping Screw D4x40		49	950539	1	Plate	
21	950515	2	Tapping Screw D4x50		50	954672	1	Side Handle	
22	950516	1	Gear Cover Assembly (includes item 23)		51	950542	1	Switch insulator	
25	950271	1	Drill Chuck 10VLA includes Item 26		52	983418Z	1	Pillar Terminal (B)	
26	930119	1	Chuck Wrench		53	932642	1	Rivet D2.5x4.8	
27	950519	1	Stop Screw		54	981373	1	Tube (D)	