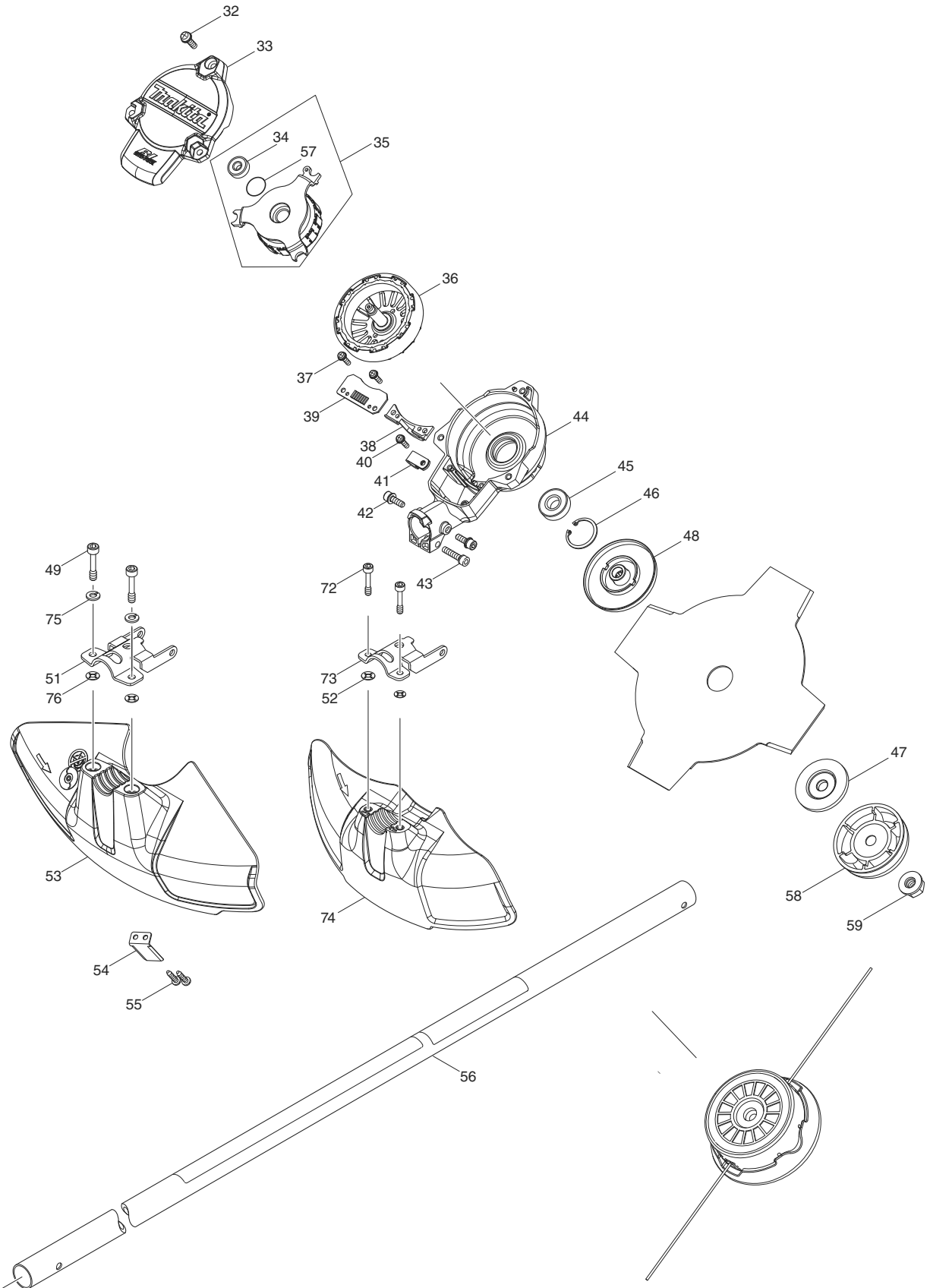


DUR368A



DUR368A

Item No.	Type	Sub	Part No.	Description	Qty	Unit
001			140L83-1	HANDLE 19 COMPLETE	1	PC.
002			135395-3	HANDLE HOLDER ASS'Y	1	PC.
		INC.		Item No. 3-7		
003			922241-7	HEX. SOCKET HEAD BOLT M5X25	4	PC.
004			318272-6	HANDLE HOLDER 1	1	PC.
005			318273-4	HANDLE HOLDER 2	1	PC.
006			318274-2	HANDLE HOLDER 3	1	PC.
007			922251-4	HEX. SOCKET HEAD BOLT M5X30	2	PC.
008			699118-8	POWER SUPPLY CORD UNIT	1	PC.
009			266326-2	TAPPING SCREW 4X18	1	PC.
010			687260-7	STRAIN RELIEF	1	PC.
013			855V64-9	DUR368A SERIAL NO. LABEL	1	PC.
014			699067-9	POWER SUPPLY CORD UNIT	1	PC.
015			183L33-3	HOUSING SET	1	SET
		INC.	263005-3	RUBBER PIN 6	4	PC.
		INC.	252126-6	HEX. LOCKING NUT M4-7	3	PC.
017			346248-3	CLAMP 24	1	PC.
018			266326-2	TAPPING SCREW 4X18	1	PC.
019			687260-7	STRAIN RELIEF	1	PC.
020			266326-2	TAPPING SCREW 4X18	1	PC.
021			620B09-4	CONTROLLER	1	PC.
022			644808-8	TERMINAL	2	PC.
024			855V55-0	DUR368A NAME PLATE	1	
025			266326-2	TAPPING SCREW 4X18	7	PC.
026			251314-2	+ SCREW M4X12	1	PC.
027			251314-2	+ SCREW M4X12	2	PC.
028			346858-6	BATTERY GUARD	1	PC.
029			168478-4	HANGER	1	PC.
030			922228-9	H.S.H.BOLT M5X18 WITH WR	1	PC.
031			424463-0	CUSHION	1	PC.
032			911233-1	PAN HEAD SCREW M5X20	3	PC.
033			455626-7	TOP COVER	1	PC.
034			210062-2	BALL BEARING 607ZZ	1	PC.
035			529146-8	STATOR ASS'Y	1	PC.
		INC.		Item No. 34,57		
036			619462-7	ROTOR	1	PC.
037			911128-8	P.H.SCREW M4X16 WITH WR	2	PC.
038			455628-3	INNER COVER	1	PC.
039			620562-8	CONTROLLER B	1	PC.
040			911128-8	P.H.SCREW M4X16 WITH WR	1	PC.
041			687042-7	STRAIN RELIEF	1	PC.
042			922223-9	H.S.H.BOLT M5X16 WITH WR	2	PC.
043			922241-7	HEX. SOCKET HEAD BOLT M5X25	1	PC.
044			143039-1	MOTOR HOUSING COMPLETE	1	PC.
045			211131-2	BALL BEARING 6001DDW	1	PC.
046			962106-1	RETAINING RING R-28	1	PC.
048			140L84-9	RECEIVE WASHER COMPLETE G	1	PC.
049			266579-3	HEX SOCKET HEAD BOLT M6X30	2	PC.
051			346073-2	PROTECTOR CLAMP	1	PC.
053			459504-3	PROTECTOR N 380	1	PC.
054			346855-2	CUTTER	1	PC.
055			266326-2	TAPPING SCREW 4X18	2	PC.
056			143856-9	PIPE COMPLETE L	1	PC.
		INC.	819312-8	MAKITA LOGO LABEL	1	PC.
		INC.	809N08-3	CAUTION LABEL	1	PC.
057			213325-5	O RING 19	1	PC.

Item No.	Type	Sub	Part No.	Description	Qty	Unit
060			183A77-7	GRIP SET	1	PC.
061			455629-1	LOCK OFF LEVER	1	PC.
062			233621-5	TORSION SPRING 9	1	PC.
063			632E40-6	SWITCH UNIT	1	PC.
064			455816-2	SWITCH LEVER	1	PC.
065			233612-6	TORSION SPRING 10	1	PC.
066			140L82-3	SUB CONTROLLER COMPLETE US	1	PC.
		INC.	819N38-6	SWITCH LABEL	1	PC.
		INC.	819N40-9	INDICATION LABEL	1	PC.
068			911258-5	PAN HEAD SCREW M5X35	1	PC.
069			266326-2	TAPPING SCREW 4X18	5	PC.
075			253428-3	SPRING WASHER 6	2	PC.
076			413143-3	WASHER	2	PC.

ACCESSORIES

- Visit www.makita.ca for more accessories information -

A01			125516-5	BAND ASSEMBLY (SHOULDER HARNESS)	1	PC.
A02			197296-3	BUMP&FEED ECO 4" HEAD ASSY M10X1.25LH	1	PC.
A03			195246-2	SAFETY GOGGLES	1	PC.
A06			783202-0	HEX. WRENCH 4	1	PC.
A07			831304-7	ACCESSORY BAG	1	PC.
A08			783217-7	HEX. WRENCH 5	1	PC.