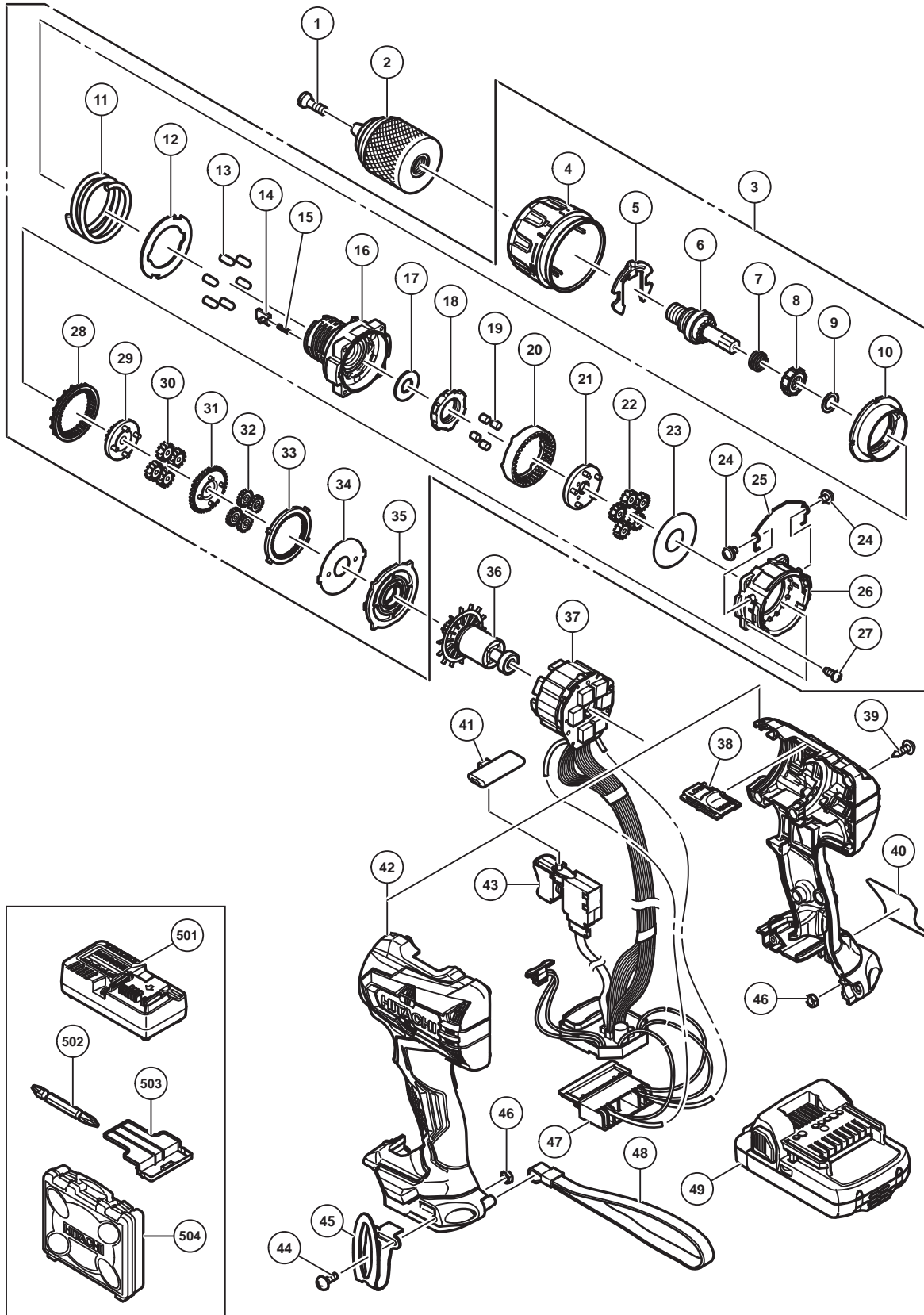


ELECTRIC TOOL PARTS LIST

■ CORDLESS IMPACT DRIVER DRILL 2016-8-19
Model DV 18DBFL2 (E1)



PARTS

DV 18DBFL2

ITEM NO.	CODE NO.	DESCRIPTION	NO. USED	REMARKS
* 1	370908	SEAL LOCK FLAT HD.SCREW (LEFT HAND) M6X20.5	1	
* 1	370909	SEAL LOCK FLAT HD.SCREW (LEFT HAND) M6X25	1	FOR GBR
* 2	335961	DRILL CHUCK 13VLRU-N (W/O CHUCK WRENCH)	1	
* 2	370897	DRILL CHUCK 13VLRB-Z (W/O CHUCK WRENCH)	1	FOR GBR
3	370593	GEAR BOX ASS'Y	1	INCLUD.4-35
4	370611	CLUTCH DIAL (B)	1	
5	327146	CLICK SPRING	1	
6	370597	SPINDLE	1	
7	327136	SPRING (C)	1	
8	339772	RATCHET (B)	1	
9	327147	WASHER (A)	1	
10	370602	NUT	1	
11	370607	SPRING	1	
12	370603	THRUST PLATE	1	
13	333539	PIN SET (6 PCS.)	6	
14	339773	SLIP BLOCK	2	
15	327133	STOPPER SPRING	2	
16	370595	FRONT CASE	1	
17	328717	WASHER (B)	1	
18	370609	LOCK RING	1	
19	319744	ROLLER	4	
20	370606	RING GEAR	1	
21	370600	CARRIER	1	
22	370616	PLANET GEAR (C) SET (5 PCS.)	5	
23	331892	WASHER (A)	1	
24	331895	SCREW SET D2 (2 PCS.)	2	
25	370608	SHIFT ARM	1	
26	370601	REAR CASE	1	
27	324357	SCREW SET D3 X 12 (4 PCS.)	4	
28	370605	SLIDE RING GEAR	1	
29	370599	PINION (C)	1	
30	370615	PLANET GEAR (B) SET (4 PCS.)	4	
31	370598	PINION (B)	1	
32	370614	PLANET GEAR (A) SET (4 PCS.)	4	
33	370604	FIRST RING GEAR	1	
34	339761	WASHER (B)	1	
35	339762	MOTOR SPACER	1	
36	361048	ROTOR PINION SET	1	
37	370619	WIRING ASS'Y	1	INCLUD.43,47
38	330583	SHIFT KNOB	1	
39	313687	TAPPING SCREW (W/FLANGE) D3 X 16 (BLACK)	9	
40		NAME PLATE	1	
41	339768	PUSHING BUTTON	1	
42	370618	HOUSING (A).(B) SET	1	
43	370151	DC-SPEED CONTROL SWITCH	1	
44	327001	TRUSS HD. SCREW M4 (BLACK)	1	
45	332824	HOOK	1	
46	327002	LOCK NUT M4 (BLACK)	2	
47	339769	BATTERY TERMINAL	1	
* 48	306952	STRAP (BLACK)	1	FOR GBR

PARTS

DV 18DBFL2

ITEM NO.	CODE NO.	DESCRIPTION	NO. USED	REMARKS
* 49	339782	BATTERY BSL 1830C (USA,CAN)	2	INCLUD.503
* 49	339783	BATTERY BSL 1830C (EUROPE,AUS,NZL)	2	INCLUD.503
* 49	335788	BATTERY BSL 1825 (EUROPE,AUS,NZL)	2	INCLUD.503

STANDARD ACCESSORIES

ITEM NO.	CODE NO.	DESCRIPTION	NO. USED	REMARKS
501		CHARGER (MODEL UC 18YKSL)	1	
502	983006	+ DRIVER BIT NO.2 65L	1	
503	329897	BATTERY COVER	1	
504	337852	CASE	1	