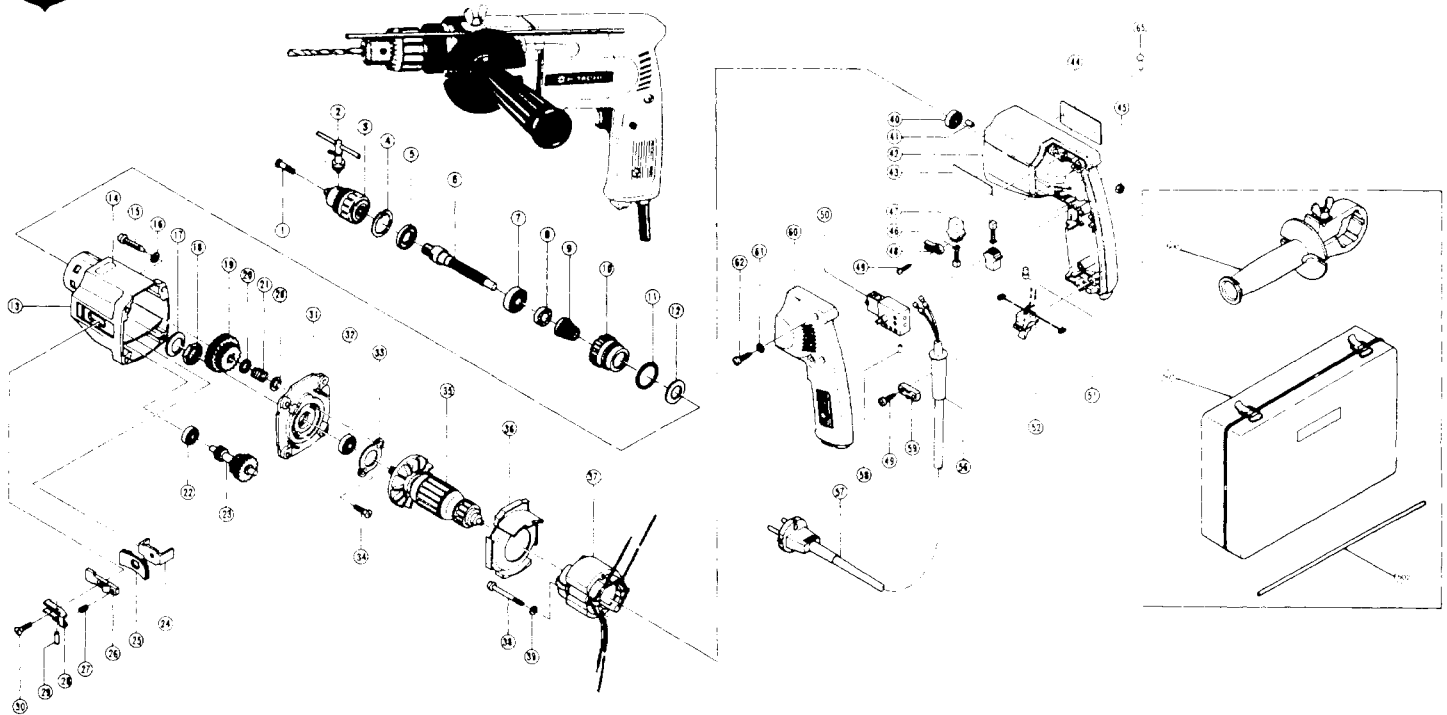




1/2" HAMMER DRILL

Model DVR-13



ITEM NO.	PART NO.	NO. USED	DESCRIPTION	SUPPLY Q'TY	ITEM NO.	PART NO.	NO. USED	DESCRIPTION	SUPPLY Q'TY
1	981122	1	Special Screw		34	949322	2	Flat Head Screw M4×10	10
2	930515	1	Chuck Wrench 10G		35	981103C	1	Armature	
3	950275	1	Drill Chuck Assembly (includes item 2) 13VLR		36	971642	1	Fan Guide	
4	948001	1	Retaining Ring D32 hole		37	981101C	1	Stator	
5	971654	1	Dust Seal		38	949278	2	Machine Screw M4×55	10
6	981510Z	1	Spindle		39	949453	2	Spring Washer M4	10
7	6002DD	1	Ball Bearing 6002DDUCMPS2S		40	608VVM	1	Ball Bearing 608VVMC2EPS2L	
8	994450	1	Ratchet (B)		41	946362	1	Bearing Lock	
9	981116	1	Ratchet (A)		42	981110	1	Housing	
10	971645	1	Change Ring		43	957561	1	HITACHI Label	
11	872767	1	O-Ring (S-32)		44	-	1	Name Plate	
12	953038	1	Washer		45	949554	1	Nut M4	10
13	971644	1	Gear Cover		46	999041	1	Carbon Brush	2
14	971661	1	Label		46 B	999080Z	1	Auto Stop Carbon Brush	2
15	931875	4	Tapping Screw D5×35		47	955203	2	Brush Holder	2
16	949454	4	Spring Washer M5	10	48	971655	2	Holder Piece	
17	981117	1	Belleville Spring		49	954004	4	Tapping Screw D4×16	
18	981118	1	Nut		50	985347	1	Speed Control Switch	
19	981512Z	1	Gear		51	959140	2	Connector	10
20	971657	2	Washer		52	981125Z	1	Reversing Switch	
21	971656	1	Spring		56	930487	1	Cord Armor	
22	608VVM	1	Ball Bearing 608VVMC2EPS2L		57	500240Z	1	Cord	
23	981511Z	1	Second Pinion		58	981373	2	Tube (B)	
24	981513Z	1	Shift Arm		59	937631	1	Cord Clip	
25	971672	1	Seal Plate		60	981112	1	Handle Cover	
26	971652	1	Shift Plate		61	949423	3	Washer M4	10
27	943053	1	Spring (B)		62	956384	3	Machine Screw M4×20	
28	971653	1	Shift Lock		64	983418Z	1	Pillar Terminal (B)	
29	949535	1	Roll Pin D3×12	10	65	932642	2	Rivet D2.5×2.8	
30	949323	1	Flat Screw M4×12	10	500	971678	1	Side Handle	
31	971664	1	Inner Cover		501	980171	1	Steel Tool Case	
32	608VVM	1	Ball Bearing 608VVMC2EPS2L		502	971677	1	Stopper	
33	971659	1	Bearing Holder						