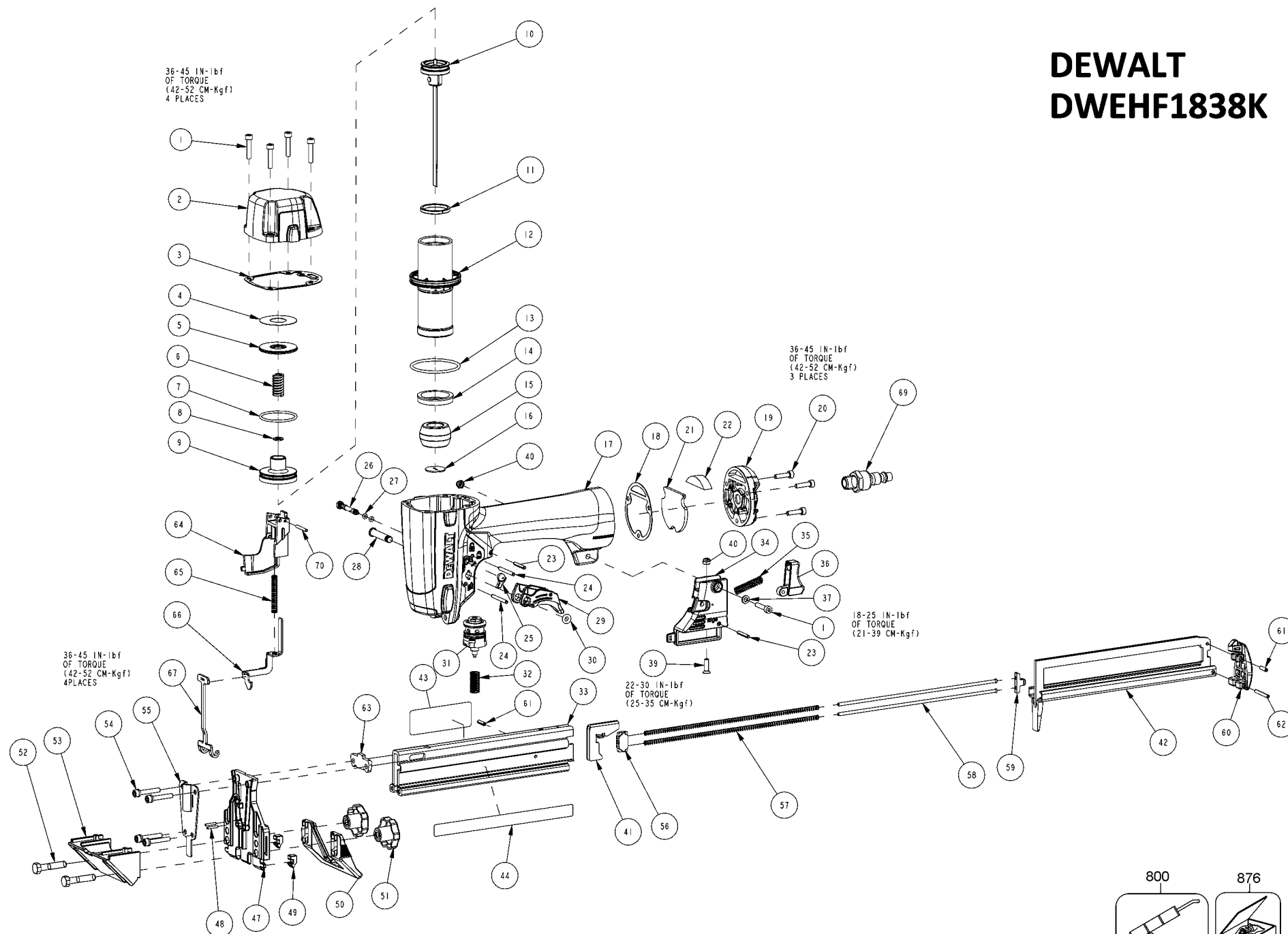
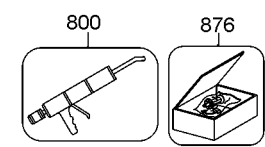


DEWALT DWEHF1838K



IP1470-1RA 07/16
To be used with parts list IP1470-2 and operation and maintenance manual 9R214370.



Parts List for DWEHF1838K Type 0

Item Number	Part Number	Description	Qty Required
1	182237	SCREW	5
2	9R215113	CAP	1
3	175682	GASKET-FRAME/CAP	1
4	180445	PLATE	1
5	180446	SEAL	1
6	180447	SPRING	1
7	180448	O RING	1
8	180449	WASHER FLAT	1
9	180450-S	HEAD VALVE BODY	1
10	180205-K	ASSEMBLY-PISTON/DRIV	1
11	180457	RING-PISTON	1
12	180458	SLEEVE-CYLINDER	1
13	180459	O-RING-44.7MMX2.4MM	1
14	180460	CHECK SEAL	1
15	180461	BUMPER	1
16	180462	DRIVER GUIDE	1
17	9R215112	FRAME	1
18	180463	GASKET-END CAP	1
19	180465	END CAP	1
20	MSC4070-16	SCREW-SHCS-M4X0.7X16	3
21	182235	AIR FILTER	1
22	180577	MUFFLER	1
23	180475	PIN-SPRING-M3X20MM	2
24	174345	PIN SPRING	2
25	184518	BUTTON-TRIGGER LOCK	1
26	184519	PIN-TRIGGER LOCK	1
27	MRG002514	O-RING-.098X.055	2

Parts List for DWEHF1838K Type 0

Item Number	Part Number	Description	Qty Required
28	182182	PIN TRIGGER	1
29	181956	TRIGGER ASSY.	1
30	182181	O-RING	1
31	TVA21	TRIGGER VALVE KIT	1
32	180476	SPRING-TRIGGER	1
33	180192	MAGAZINE-FIXED-MACHI	1
34	9R215119	MAGAZINE BRACKET	1
35	180528	SPRING	1
36	9R195735	LATCH	1
37	180504	WASHER, FLAT	1
39	174307	SCREW-SFHCS-M4X0.7X1	1
40	MHE4070-100	ELASTIC STOP NUT-M4	1
41	180198	PUSHER	1
42	180206	ASSEMBLY-MAGAZINE CO	1
43	9R214371	WARNING LABEL	1
44	9R214377	PRODUCT/FAST. LABEL	1
47	180636	NOSE-MACHINING	1
48	180490	PIN SPRING	1
49	9R215121	NOSE INSERT	2
50	158443	FOOT-ADJUSTABLE	1
51	9R215122	KNOB	2
52	117398	SCREW-HHCS-M6X1.0X30	2
53	188697	GUIDE- BLOCK	1
54	121052	SCREW-SHCS-M4X0.70X2	4
55	180637	COVER TRIP	1
56	180199	GUIDE-SLIDING	1
57	180527	SPRING	2

Parts List for DWEHF1838K Type 0

Item Number	Part Number	Description	Qty Required
58	180526	ROD-SPRING GUIDE	2
59	180200	SUPPORT-SLIDING GUID	1
60	180201	END CAP-MAGAZINE	1
61	MPG030012	PIN SPRING	1
62	180567	PIN SPRING	1
63	180208	PLATE-DRIVER	1
64	180641	GUIDE-LOWER CONTACT	1
65	180646	TRIP SPRING	1
66	180639	TRIP-UPPER	1
67	189986	CONTACT ARM	1
69	BTFP72333	PLUG	1
70	189882	PIN,SOLID	1
800	100679	LUBE (1LB.CAN)	1
800	100653	LUBE (2CC)	1
876	102341	BLOCK-INSTALLATION	1