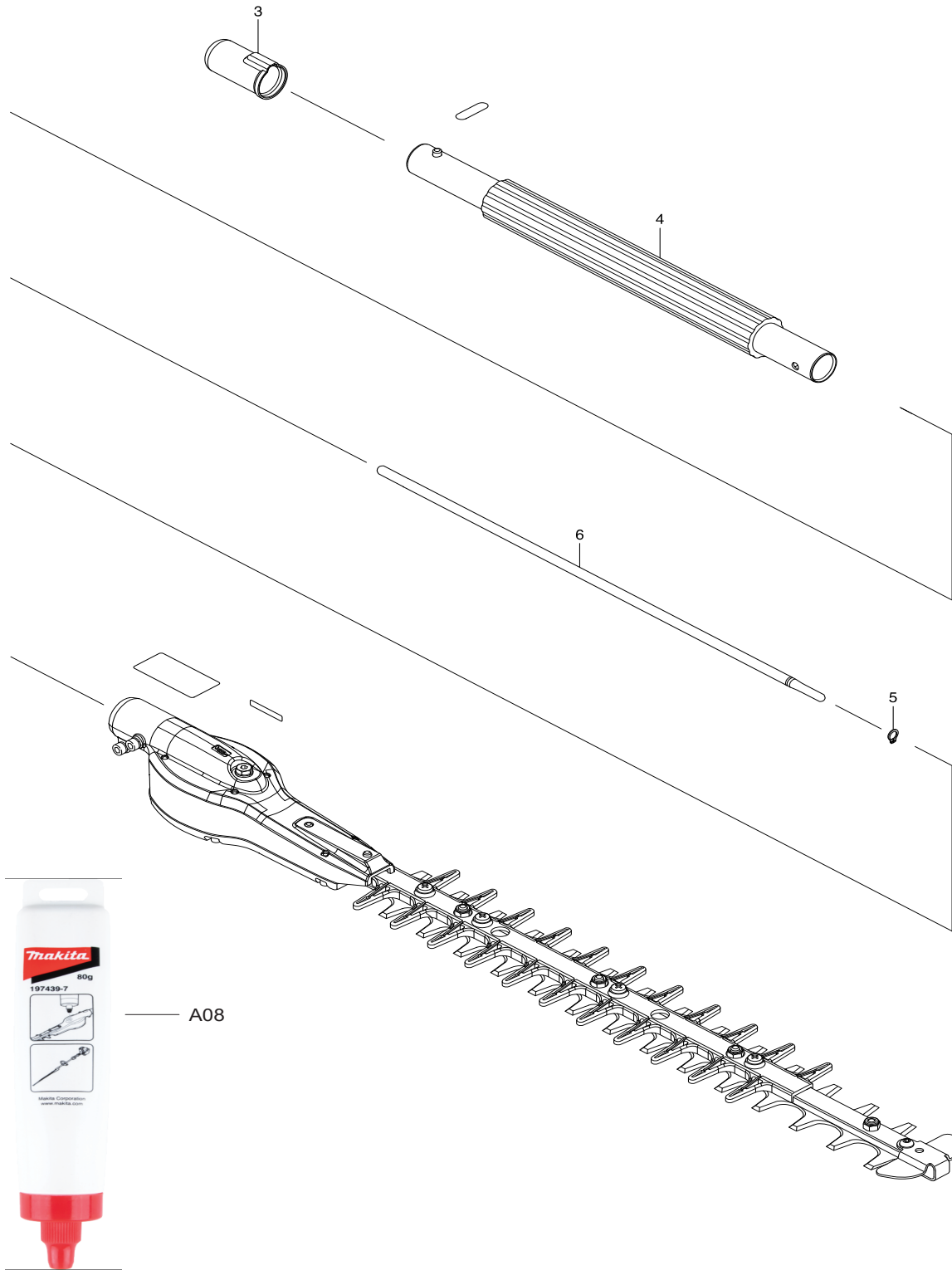


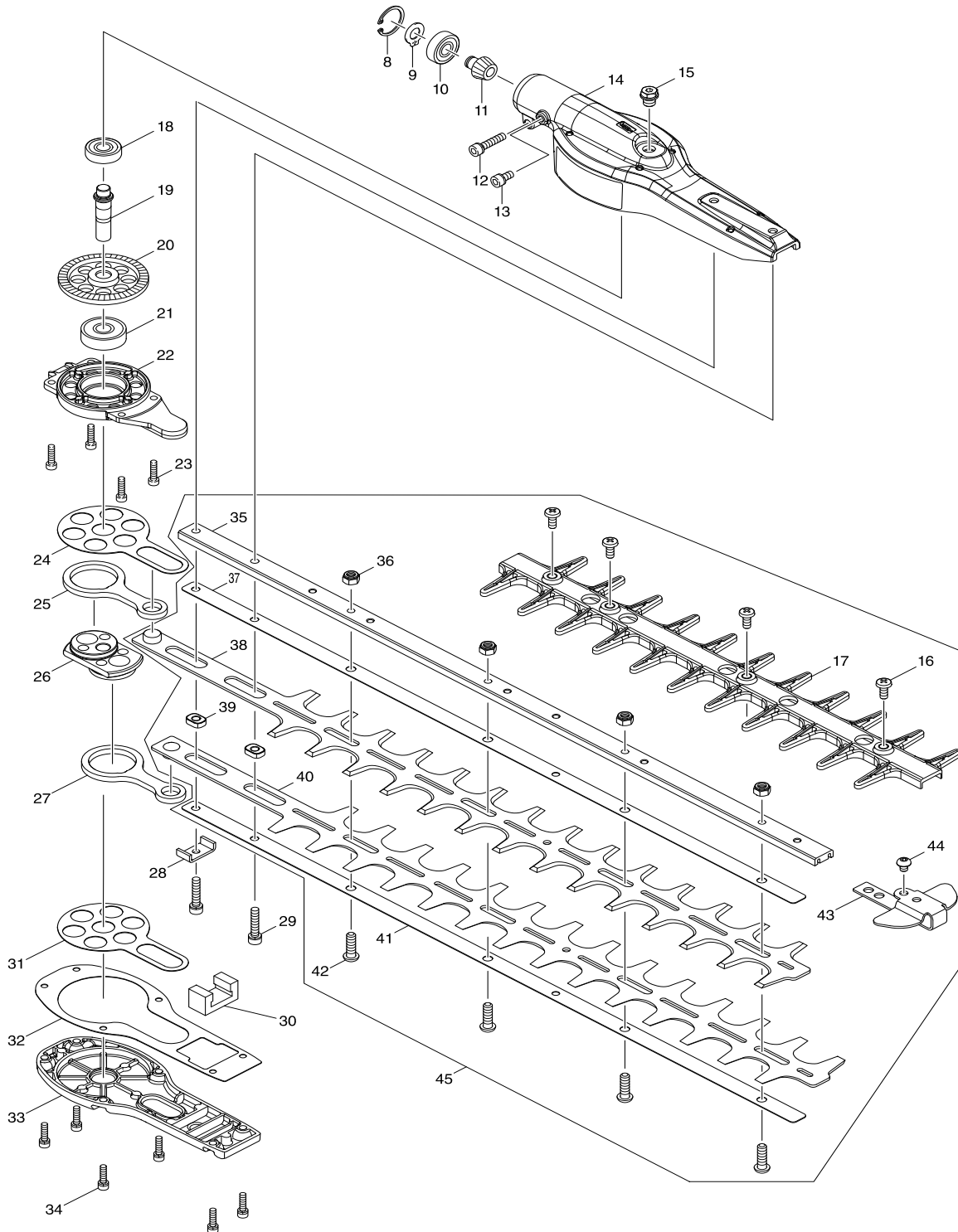


EN410MP



Products with multiple versions are listed in subsiding order with the newest version on top not indented.

| Section | Fig. No. | Part No. | Description | EN410MP | Tech Bulletin | Notes |
|---------|----------|----------|--------------------|---------|---------------|-------|
| 1 | 3 | 424434-7 | CAP 24 | 1 | | |
| 1 | 4 | 143825-0 | GRIP PIPE COMPLETE | 1 | | |
| 1 | 5 | 961003-8 | RETAINING RING S-7 | 1 | | |
| 1 | 6 | 326754-4 | SHAFT A | 1 | | |
| 1 | A08 | 197439-7 | GEAR GREASE | 1 | | |



Products with multiple versions are listed in subsiding order with the newest version on top not indented.

| Section | Fig. No. | Part No. | Description | EN410MP | Tech Bulletin | Notes |
|---------|----------|----------|-----------------------------|---------|---------------|-------|
| 2 | 8 | 962103-7 | RETAINING RING R-24 | 1 | | |
| 2 | 9 | 961005-4 | RETAINING RING S-9 | 1 | | |
| 2 | 10 | 210049-4 | BALL BEARING 609ZZ | 1 | | |
| 2 | 11 | 227608-7 | SPIRAL BEVEL GEAR 10 | 1 | | |
| 2 | 12 | 922241-7 | HEX. SOCKET HEAD BOLT M5X25 | 1 | | |
| 2 | 13 | 922211-6 | HEX. SOCKET HEAD BOLT M5X12 | 1 | | |
| 2 | 14 | 143832-3 | GEAR HOUSING COMPLETE B | 1 | | |
| 2 | 15 | 266818-1 | HEX. SOCKET HEX. BOLT M8X8 | 1 | | |
| 2 | 16 | 915211-3 | BINDING HEAD SCREW M5X12 | 4 | | |
| 2 | 17 | 454672-7 | BLADE GUARD | 1 | | |
| 2 | 18 | 210049-4 | BALL BEARING 609ZZ | 1 | | |
| 2 | 19 | 326257-8 | SPINDLE | 1 | | |
| 2 | 20 | 227609-5 | SPIRAL BEVEL GEAR 47 | 1 | | |
| 2 | 21 | 211067-5 | BALL BEARING 6200ZZ | 1 | | |
| 2 | 22 | 318972-8 | BEARING HOUSING | 1 | | |
| 2 | 23 | 265490-6 | HEX. SOCKET HEAD BOLT M4X16 | 4 | | |
| 2 | 24 | 346658-4 | PLATE | 1 | | |
| 2 | 25 | 346251-4 | CONNECTING ROD | 1 | | |
| 2 | 26 | 332055-0 | CRANK | 1 | | |
| 2 | 27 | 346251-4 | CONNECTING ROD | 1 | | |
| 2 | 28 | 346256-4 | HOLDER | 1 | | |
| 2 | 29 | 922241-7 | HEX. SOCKET HEAD BOLT M5X25 | 2 | | |
| 2 | 30 | 443159-4 | SEAL | 1 | | |
| 2 | 31 | 346658-4 | PLATE | 1 | | |
| 2 | 32 | 423457-2 | GASKET | 1 | | |
| 2 | 33 | 318973-6 | UNDER COVER | 1 | | |
| 2 | 34 | 922126-7 | HEX. SOCKET HEAD BOLT M4X16 | 6 | | |
| 2 | 35 | 332058-4 | GUIDE BAR | 1 | | |
| 2 | 36 | 264089-4 | HEX. LOCK NUT M6-10 | 4 | | |
| 2 | 37 | 346665-7 | PLATE | 1 | | |
| 2 | 38 | 725187-4 | SHEAR BLADE | 1 | | |
| 2 | 39 | 313211-1 | SLEEVE 5 | 2 | | |
| 2 | 40 | 725187-4 | SHEAR BLADE | 1 | | |
| 2 | 41 | 346665-7 | PLATE | 1 | | |

Products with multiple versions are listed in subsiding order with the newest version on top not indented.

| Section | Fig. No. | Part No. | Description | EN410MP | Tech Bulletin | Notes |
|---------|----------|----------|-----------------------------|---------|---------------|------------------|
| 2 | 42 | 266824-6 | H.S. BUTTON HEAD BOLT M6X20 | 4 | | |
| 2 | 43 | 346629-1 | END COVER | 1 | | |
| 2 | 44 | 266075-1 | HEX. SOCKET HEAD BOLT M5X6 | 1 | | |
| 2 | 45 | 197768-8 | SHEAR BLADE ASSEMBLY SET ME | 1 | | INC. 16,17,35-44 |