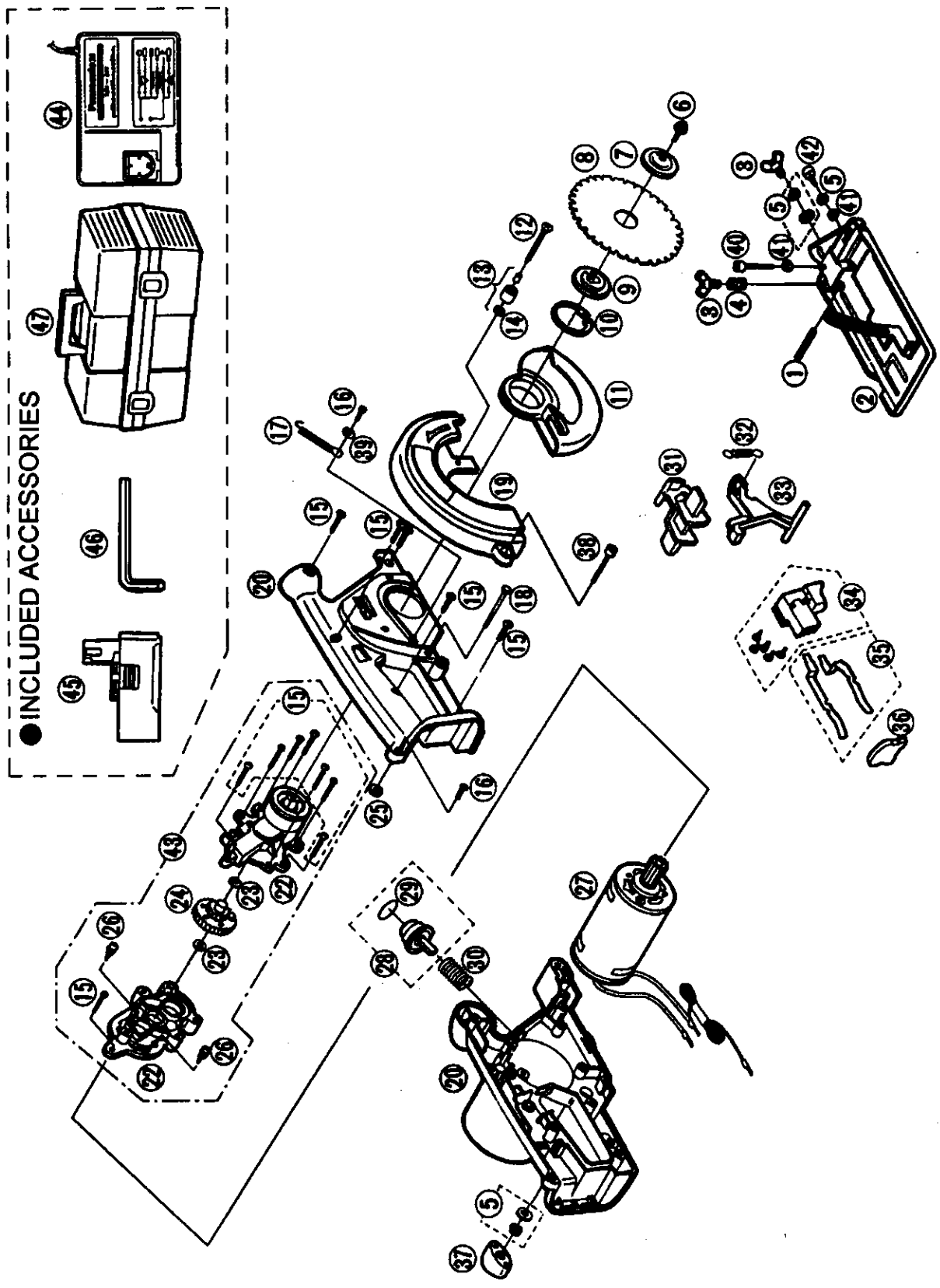


# EXPLODED VIEW FOR EY3531



## REPLACEMENT PARTS LIST FOR EY3531

NOTE : \*A . . . available as an optional accessory  
 \*B . . . only available as set  
 \*C . . . available individually

Ref.No.	Part No.	Part Name & Descriptions	Per unit	Remarks
1	EY3500K0357	SPRING PIN	1	φ 6-45
▲ 2	EY3531S3428	BASE	1	
3	EY3530S6487	ADJUSTING BOLT	2	*C
4	EY3503K0197	SPRING	1	φ 7.6*15
5	EY3503S6387	WASHER	3 SET	*B φ 5(3)/5*0.8(2)
▲ 6	EY3530K6257	FLANGE SOCKET	1	M5-12
7	EY3501K1177	OUTER WASHER	1	
8	EY9PW13A	BLADE	1	*A
9	EY3503L1167	INNER WASHER	1	
10	EY3503L0427	STOP RING	1	
▲ 11	EY3503H1197	LOWER BLADE GUARD	1	
12	EY3503S9387	TAPPING SCREW	1	S4-40
13	EY3503K0397	LOWER GUARD STOPPER	1	
14	EY3500Y6457	WASHER	1	φ 4
15	EY3503K6208	TAPPING SCREW	14	*C K4-20
16	EY3503K6228	TAPPING SCREW	2	*C K3-12
17	EY3503L0927	SPRING	1	φ 5.45*47
18	EY3503L6537	SQUARE SCREW	1	M5
▲ 19	EY3531K3108	UPPER BLADE COVER	1	
▲ 20	EY3531K3078	HOUSING AB SET	1	
▲ 22	EY3530L1767	GEAR BOX	1	
23	EY3503L0847	THRUST PLATE	2	
▲ 24	EY3530L1437	INTERNAL GEAR	1	
▲ 25	EY3530L0977	O-RING	1	
26	EY3503L6067	SEMS SCREW	2	*C K4-10
▲ 27	EY3530L1008	MOTOR	1	
▲ 28	EY3530Y0368	SHAFT LOCK BUTTON	1	
29	EY3500K0967	O-RING	1	
30	EY3500K0197	LOCK SPRING	1	φ 15.4*37
31	EY3503Y1588	SWITCH LOCK LEVER	1	
32	EY3500K0917	SWITCH LOCK SPRING	1	φ 5.7*28.2
33	EY3503Y3238	OFF LOCK LEVER	1	
34	EY3550Y2008	POWER SWITCH	1	
35	EY3500K0067	BATTERY CONTACTS	1	
36	EY3510L0207	DUST COVER	1	
37	EY3503K0897	DEPTH ADJUSTING NUT	1	
▲ 38	EY3530K6367	SCREW	1	M5*35
▲ 39	EY3530L6467	WASHER	1	φ 3
40	EY3503K6757	HEX HOLE BOLT	1	M5-35
41	EY3503S6547	HEX NUT	2	*C M5
42	EY3503K6708	SOCKET BUTTON HEAD CUP SCREW	1	M5*14
▲ 43	EY3530L1458	GEAR BOX BLOCK	1	
44	EY0213	BATTERY CHARGER	1	*A
45	EY9136	BATTERY PACK	1	*A
46	EY3542B7867	HEX WRENCH	1	
47	EY9593	TOOL CASE	1	*A
▲ -	EY3531K8008	INDIVIDUAL BOX	1	
▲ -	EY3531K8108	OPERATING INSTRUCTIONS	1	