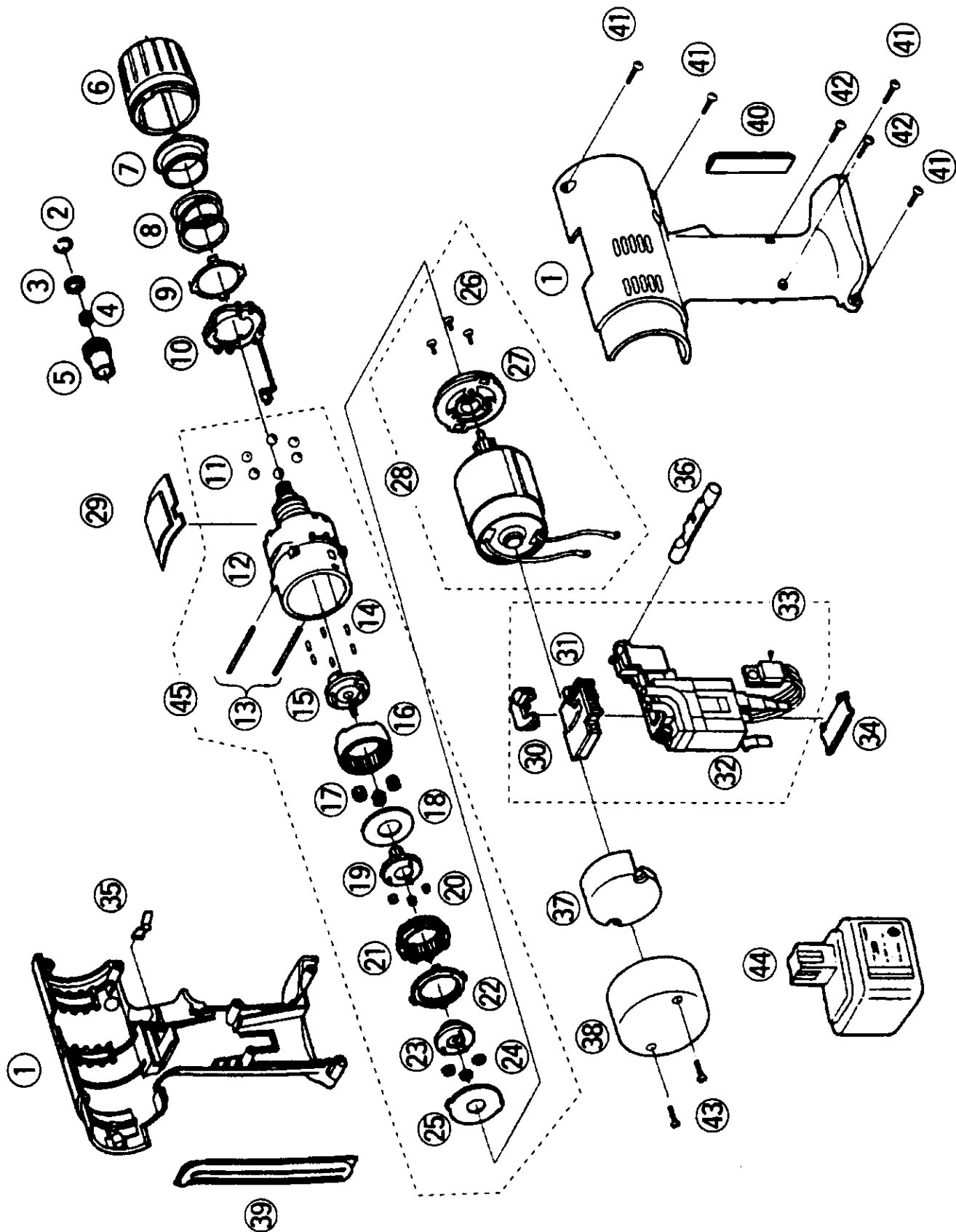


EXPLODED VIEW



REPLACEMENT PARTS LIST

NOTE : *A . . . available as an optional accessory
 *B . . . only available as set
 *C . . . available individually

Ref. No.	Part No.	Part Name & Descriptions	Per unit	Remarks
1	EY6408K3079	HOUSING AB SET	1	
2	EY574B1167	C-TYPE SPRING	1	
3	EY574B0857	THRUST PLATE	1	
4	EY6408K0197	HOLDER SPRING	1	
5	EY6408K3718	BIT HOLDER	1	
▲ 6	EY6481H3227	CLUTCH HANDLE	1	
▲ 7	EY6481L0637	ADJUSTING SCREW	1	
8	EY6408L0168	SPRING FOR CLUTCH	1	
▲ 9	EY6481L0457	CLICK PLATE	1	
10	EY6481L0577	CLUTCH PLATE	1	
11	EY560B6967	STEEL BALL	6	*B (6PCS/PK)
12	EY6408L1068	DRIVING BLOCK	1	
▲ 13	EY6481L0357	THRUST PIN SET	2	*B (2PCS/PK)
14	EY6283L0377	ROLLER PIN	6	*B (6PCS/PK)
15	EY6207B1117	CARRIER	1	
16	EY6481L1477	RING GEAR A	1	
17	EY6207B1347	PLANET GEAR SET	3	*B (3PCS/PK)
18	EY6200B0857	THRUST PLATE	1	
▲ 19	EY6401L1357	CARRIER	1	
20	EY6200B1357	PLANET GEAR A	3	*B (3PCS/PK)
21	EY6408L1468	RING GEAR A	1	
22	EY6101L1477	RING GEAR B	1	
▲ 23	EY6401B1108	CARRIER A	1	
24	EY6200B1367	PLANET GEAR B	3	*B (3PCS/PK)
▲ 25	EY6481L0887	THRUST PLATE	1	
26	EY6261B6027	SCREW FOR MOTOR	3	*C K3-6
27	EY6481L0027	MOTOR MOUNTING PLATE	1	
28	EY6408L1008	MOTOR	1	
29	EY6408K3238	FIXED HANDLE	1	
30	EY6481L1487	SWITCH CAM	1	
31	EY6481L2017	STOP SWITCH	1	
32	EY6408Y2028	SWITCH SET	1	
33	EY6408Y2008	SWITCH BLOCK	1	
▲ 34	EY6481L0207	DUST PREVENTIVE PLATE	1	
▲ 35	EY6481L0177	CLICK SPRING	1	
▲ 36	EY6481H3247	SELECTOR HANDLE	1	
37	EY6481L2567	RADIATING PLATE (W/SCREW)	1	
38	EY6408H3108	HOUSING COVER	1	
39	EY6481H3937	GRIP B	1	
40	EY6481H3947	GRIP A	1	
41	EY563B9217	TAPPING SCREW	4	*C K3-16
42	EY574B9037	SCREW	2	*C K3-20
43	EY6408K9058	SCREW	2	*C K3-10
44	EY9107	BATTERY PACK	1	*A
45	EY6408L1458	GEAR BOX BLOCK	1	
▲ -	EY6408K8009	INDIVIDUAL BOX	1	
▲ -	EY6408K8109	OPERATING INSTRUCTIONS	1	