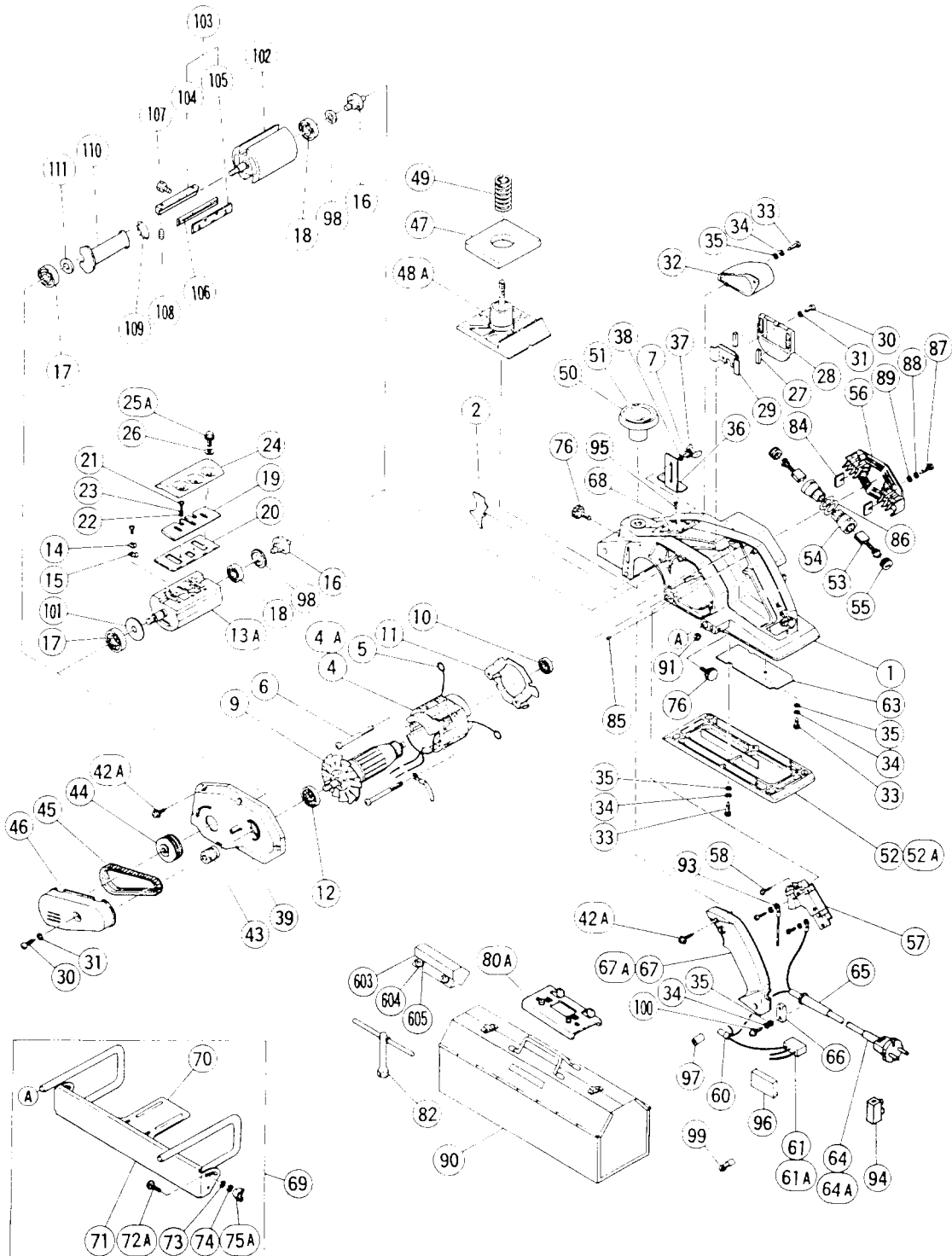


ELECTRIC TOOL PARTS LIST

■ PLANER
Model F - 30A

1993 · 11 · 30
(E7)



PARTS

F-30A

ITEM NO.	CODE NO.	DESCRIPTION	NO. USED	REMARKS	
*	1	958-860	HOUSING ASS'Y	1	INCLUD.6,29
*	1	958-904Z	HOUSING ASS'Y	1	INCLUD.6,29 FOR FIN,SWE,NOR
	2	958-891	FAN GUIDE (A)	1	
*	4	958-862C	STATOR ASS'Y 110V - 115V	1	INCLUD.5
*	4	958-862D	STATOR ASS'Y 120V - 127V	1	INCLUD.5
*	4	958-862E	STATOR ASS'Y 220V - 230V	1	INCLUD.5
*	4	958-862F	STATOR ASS'Y 240V	1	INCLUD.5
*	4	958-862G	STATOR ASS'Y 220V - 230V	1	INCLUD.5 FOR DEN,FIN,SUI,ESP
*	4	958-862Z	STATOR ASS'Y 220V - 230V	1	INCLUD.5 FOR NZL,FRG
*	4	958-905G	STATOR ASS'Y 220V - 230V	1	INCLUD.5 FOR SAF
*	4	958-862H	STATOR ASS'Y 240V	1	INCLUD.5 FOR AUS
*	4	958-905F	STATOR ASS'Y 240V	1	INCLUD.5 FOR GBR
*	4	958-905C	STATOR ASS'Y 110V	1	INCLUD.5 FOR GBR
*	4	958-862L	STATOR ASS'Y 110V - 115V	1	INCLUD.5 FOR USA,CAN
*	4A	958-905E	STATOR ASS'Y 220V - 230V	1	INCLUD.5 FOR EUROPE
	5	930-703	BRUSH TERMINAL	2	
	6	960-251	HEX. HD. TAPPING SCREW D5X65	2	
	7	949-454	SPRING WASHER M5 (10 PCS.)	1	
*	9	958-864U	ARMATURE ASS'Y 110V - 115V	1	INCLUD.10,12
*	9	958-864D	ARMATURE 120V - 127V	1	
*	9	958-864E	ARMATURE 220V - 230V	1	
*	9	958-864F	ARMATURE 240V	1	
	10	608-VVM	BALL BEARING 608VVMC2EPS2L	1	
	11	958-865	FAN GUIDE (B)	1	
	12	620-0VV	BALL BEARING 6200VVCMP2S	1	
*	13A	991-256	CUTTER BLOCK ASS'Y	1	INCLUD.14 - 18,98,101
*	13A	958-903Z	CUTTER BLOCK ASS'Y	1	INCLUD.14 - 18,98,101 FOR DEN,ESP
	14	958-699	HOLDER SPRING	4	
	15	958-700	GUARD PLATE (A)	4	
	16	958-824Z	SHAFT (B)	1	
	17	620-1VV	BALL BEARING 6201VVCMP2S	1	
	18	629-DDM	BALL BEARING 629DDMC3EAV2S	1	
*	19	958-867	PLAHER BLADES 92MM (1 PAIR)	2	
*	19	958-893Z	PLAHER BLADES (DOUBLE EDGE) 92MM (1 PAIR)	2	
	20	958-868	BACK METAL	2	
	21	949-215	MACHINE SCREW M4X8 (10 PCS.)	4	
	22	949-423	WASHER M4 (10 PCS.)	4	
	23	949-453	SPRING WASHER M4 (10 PCS.)	4	
	24	958-869	BLADE HOLDER (1 PAIR)	2	
	25A	958-917	BOLT (W/WASHER) M7X15	6	
	26	940-391	WASHER	6	TILL 9.1987
	27	958-839Z	MAGNET	2	
	28	958-902	BLADE COVER	1	
	29	958-899	COVER ASS'Y	1	INCLUD.28
	30	949-218	MACHINE SCREW M4X14 (10 PCS.)	3	
	31	949-453	SPRING WASHER M4 (10 PCS.)	3	
	32	958-870	CHIP COVER	1	
	33	954-004	TAPPING SCREW D4X16	9	
	34	949-453	SPRING WASHER M4 (10 PCS.)	11	
	35	949-423	WASHER M4 (10 PCS.)	11	
	36	958-840Z	DEPTH GUIDE	1	

*: ALTERNATIVE PARTS

PARTS

F-30A

ITEM NO.	CODE NO.	DESCRIPTION	NO. USED	REMARKS
37	949-397	WING BOLT M5X10 (10 PCS.)	1	
38	949-424	WASHER M5 (10 PCS.)	1	
39	958-871	END BRACKET	1	
42A	306-999	TAPPING SCREW (W/FLANGE) D4X25	7	
43	958-872	PULLEY (A)	1	
44	958-873	PULLEY (B)	1	
45	958-874	BELT	1	
46	958-875	BELT COVER	1	
47	958-876	RUBBER PACKING	1	
48A	958-918	FRONT BASE	1	
49	958-709	SPRING	1	
50	942-328	KNOB	1	
* 51	958-832Z	SCALE	1	
* 51	958-910	SCALE (INCH)	1	FOR USA,CAN
* 52	958-878	REAR BASE	1	
* 52A	958-908Z	REAR BASE	1	FOR ITA,HOL,FIN
53	999-043	CARBON BRUSH (1 PAIR)	2	
54	958-900	BRUSH HOLDER	2	
55	945-161	BRUSH CAP	2	
56	958-879	TAIL COVER	1	
* 57	986-201	SWITCH (A) (1P SCREW TYPE) W/LOCK	1	
* 57	956-832	SWITCH (B) (2P SCREW TYPE) W/LOCK	1	FOR NZL,AUS,SAF,FRG,DEN,ESP,SUI
* 57	953-249P	SWITCH (B) (2P SCREW TYPE) W/O LOCK	1	FOR FIN
* 57	931-573	SWITCH (2P PILLAR TYPE) W/LOCK	1	FOR AUT,NOR
* 57	953-178	SWITCH (2P PILLAR TYPE) W/SAFETY LOCK	1	FOR FRA
* 57A	960-280Z	SWITCH (2P PILLAR TYPE) W/O LOCK	1	FOR GBR,ITA,HOL,SWE,USA,CAN
58	954-017	TAPPING SCREW D4X12	1	
* 60	959-140	CONNECTOR 50091 (10 PCS.)	1	
* 61	960-283Z	NOISE SUPPRESSOR	1	FOR SUI
* 61A	984-273	NOISE SUPPRESSOR	1	
63	958-882	FIBER PLATE	1	
* 64	500-206Z	CORD	1	(CORD ARMOR D10.2) FOR ASIA (100V - 127V)
* 64	500-213Z	CORD	1	(CORD ARMOR D8.2) FOR ASIA (220V - 240V)
* 64	500-224Z	CORD	1	(CORD ARMOR D10.2) FOR SIN
* 64	500-227Z	CORD	1	(CORD ARMOR D8.2) FOR AUS
* 64	500-232Z	CORD	1	(CORD ARMOR D8.2) FOR SAF,GBR (110V)
* 64	500-234Z	CORD	1	(CORD ARMOR D8.2) FOR EUROPE
* 64	500-240Z	CORD	1	(CORD ARMOR D8.2) FOR USA,CAN
* 64A	500-435Z	CORD	1	(CORD ARMOR D8.2) FOR GBR (240V)
* 65	930-487	CORD ARMOR D8.2	1	
* 65	930-026	CORD ARMOR D10.2	1	
66	937-631	CORD CLIP	1	
* 67	958-883	HANDLE COVER	1	
* 67A	958-907Z	HANDLE COVER	1	W/O LOCK SWITCH FOR GBR,ITA,HOL,FRA,SWE, USA,CAN
* 68		NAME PLATE	1	
69	958-886	BEVEL GUIDE ASS'Y	1	INCLUD.70 - 75A
70	958-887	GUIDE	1	
71	958-888	BEVEL PLATE	1	
72A	963-492	BOLT (SQUARE) M5X22	2	
73	949-424	WASHER M5 (10 PCS.)	2	

*: ALTERNATIVE PARTS

PARTS

F-30A

ITEM NO.	CODE NO.	DESCRIPTION	NO. USED	REMARKS
74	949-454	SPRING WASHER M5 (10 PCS.)	2	
75A	983-493	WING NUT M5	2	
76	940-650	STOPPER SCREW M5X14	2	
* 80A	958-916	SET GAUGE	1	
82	940-543	BOX WRENCH 10MM	1	
84	958-898	RUBBER PIECE	2	
85	946-362	BEARING LOCK	1	
86	958-901	FIBER WASHER (A)	2	
87	958-384	TAPPING SCREW D4X20	4	
88	949-453	SPRING WASHER M4 (10 PCS.)	4	
89	949-423	WASHER M4 (10 PCS.)	4	
90	958-892Z	CASE (STEEL)	1	
91	949-555	NUT M5 (10 PCS.)	1	
* 93	971-825	INTERNAL WIRE	1	
* 94	938-307Z	PILLAR TERMINAL	1	
* 95	949-509	RIVET D2.5X3.2 (10 PCS.)	4	
* 96	983-243	SUPPORT	1	
* 97	981-373	TUBE (D)	2	FOR FRA
98	958-915	WASHER (A)	1	
* 99	981-419Z	TERMINAL	1	FOR NOISE SUPPRESSOR FOR HOL
* 100	984-750	TAPPING SCREW (W/FLANGE) D4X16	2	
101	944-954	BEARING WASHER	1	
* 102	308-081	CUTTER BLOCK ASS'Y (A)	1	FOR ADJUST SCREW TYPE INCLUD.16 - 18,98,109 - 111
* 103	308-060	BLADE HOLDER ASS'Y	2	(2 SET) FOR ADJUST SCREW TYPE INCLUD.107,108
* 104	308-107	BLADE HOLDER A (1PAIR)	2	FOR ADJUST SCREW TYPE
* 105	308-108	BLADE HOLDER B (1PAIR)	2	FOR ADJUST SCREW TYPE
* 106	000-008D		2	PLANER BLADE (1 PAIR) FOR ADJUST SCREW TYPE
* 107	983-472Z	BOLT M5	8	FOR ADJUST SCREW TYPE
* 108	938-477	HEX. SOCKET SET SCREW M5X8	4	FOR ADJUST SCREW TYPE
* 109	308-062	INSERT PIECE (A)	2	FOR ADJUST SCREW TYPE
* 110	990-665	INSERT PIECE	2	FOR ADJUST SCREW TYPE
* 111	308-063	BEARING WASHER	1	FOR ADJUST SCREW TYPE

OPTIONAL ACCESSORIES

ITEM NO.	CODE NO.	DESCRIPTION	NO. USED	REMARKS
* 601	958-893Z	PLANER BLADES (DOUBLE EDGE) 92MM (1 PAIR)	2	
602	958-908Z	DUST BAG	1	
603	958-889	BLADE SHARPENING ASS'Y	1	INCLUD.604A
604A	940-654	MACHINE SCREW (W/WASHER) M6X12	4	

*: ALTERNATIVE PARTS

Printed in Japan 11 - 93