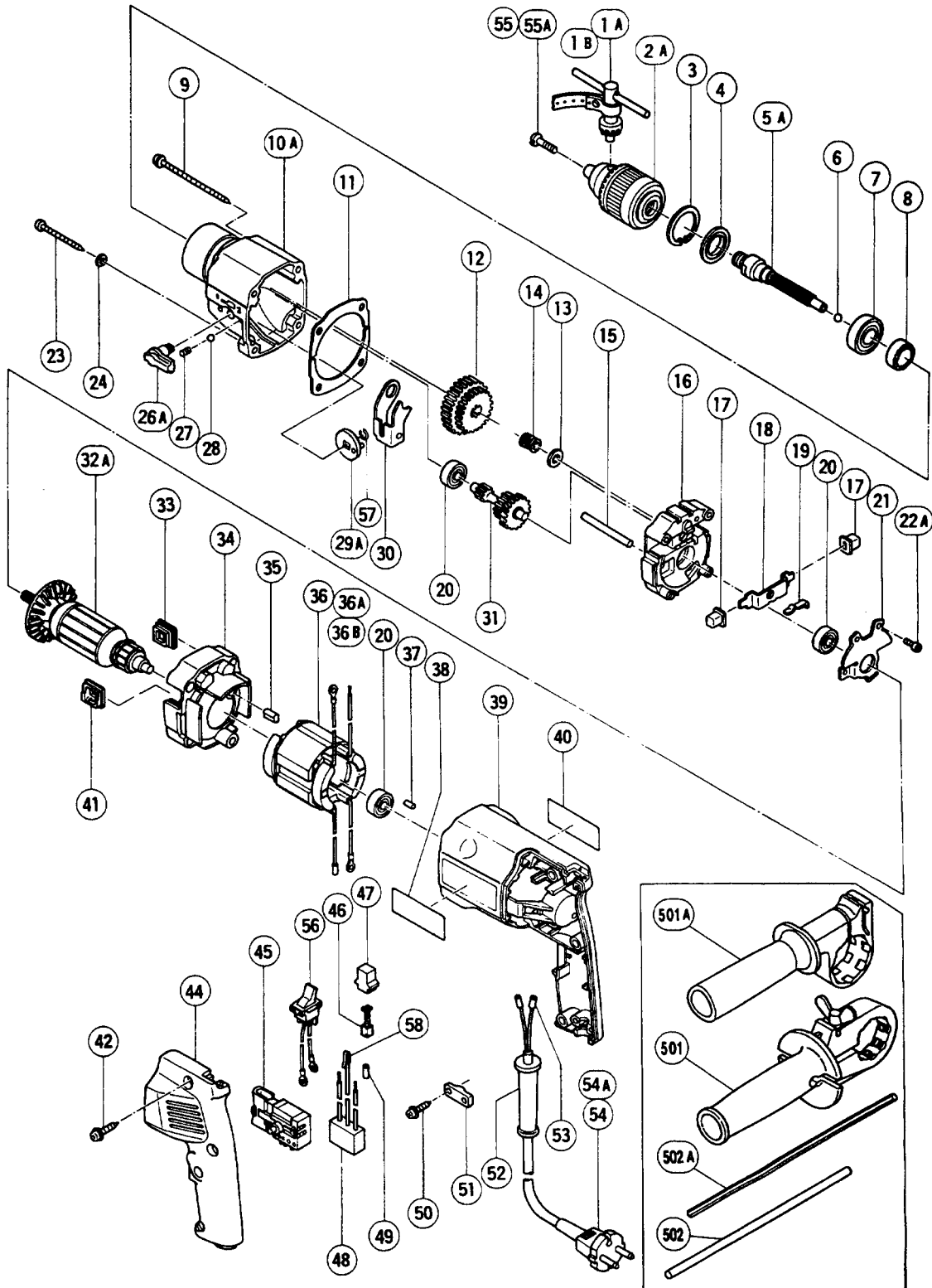


ELECTRIC TOOL PARTS LIST

■ IMPACT DRILL
Model FDV 16VA

1993 · 2 · 2
(E3)



PARTS

FDV 16VA

ITEM NO.	CODE NO.	DESCRIPTION	NO. USED	REMARKS
* 1A	879-355	CHUCK WRENCH 10G	1	
* 1B	987-576	CHUCK WRENCH FOR 13VLB - D,13VLR - D	1	
2A	879-352	DRILL CHUCK 13VLA	1	INCLUD.1A
3	948-001	RETAINING RING FOR D32 HOLE	1	
4	971-654	DUST SEAL	1	
5A	994-740	SPINDLE	1	
6	959-149	STEEL BALL D4.76 (10 PCS.)	1	
7	600-2DD	BALL BEARING 6002DDUCMPS2S	1	
8	994-450	RATCHET (B)	1	
9	981-539Z	TAPPING SCREW (W/WASHER) D5X85	2	
10A	991-977	GEAR COVER	1	
11	992-000	PACKING	1	
12	994-742	GEAR	1	
13	971-657	WASHER	1	
14	971-656	SPRING	1	
15	984-104	PIN D5	1	
16	991-985	INNER COVER	1	
17	991-976	CHANGE KNOB	2	
18	991-982	CHANGE PLATE	1	
19	963-226	SPRING (A)	1	
20	608-VVM	BALL BEARING 608VVMC2EPS2L	3	
21	991-981	BEARING HOLDER	1	
22A	993-126	SEAL LOCK SCREW (W/SP. WASHER) M5X12	3	
23	955-912	TAPPING SCREW D5X45	2	
24	949-424	WASHER M5 (10 PCS.)	2	
26A	994-750	SHIFT LEVER	1	
27	981-328	SPRING (H)	1	
28	959-155	STEEL BALL D3.97 (10 PCS.)	1	
29A	994-751	SHIFT PLATE	1	
30	991-978	SHIFT ARM	1	
31	994-741	SECOND PINION	1	
* 32A	360-029E	ARMATURE 220V - 230V	1	
* 32A	360-029F	ARMATURE 230V - 240V	1	FOR SRI,SIN,KUW,NGU,NZL,AUS,GBR,SAF
* 32B	360-029U	ARMATURE ASS'Y 110V - 127V	1	INCLUD.20
33	991-974	PIECE (B)	1	
34	991-975	FAN GUIDE	1	
35	994-343	RUBBER BUSHING	2	
* 36	340-060C	STATOR 115V	1	
* 36	340-060E	STATOR 220V	1	
* 36	340-060F	STATOR 230V - 240V	1	
* 36A	340-060J	STATOR 220V - 230V	1	(W/CHOKE COIL) FOR ITA,FRA,HOLDEN, FIN,SWE,AUT,SUI,NOR
* 36A	340-060K	STATOR 230V - 240V	1	(W/CHOKE COIL) FOR NZL,GBR,SAF
* 36B	340-050G	STATOR 220V - 230V	1	(W/CHOKE COIL) FOR FRG,BEL
37	946-362	BEARING LOCK	1	
38	994-840	HITACHI LABEL	1	
39	994-821	HOUSING (MOSS GREEN)	1	
40		NAME PLATE	1	
41	991-973	PIECE (A)	1	
42	982-095	TAPPING SCREW (W/WASHER) D4X20	3	
* 44	994-823	HANDLE COVER (MOSS GREEN)	1	

* : ALTERNATIVE PARTS

STANDARD ACCESSORIES

FDV 16VA

ITEM NO.	CODE NO.	DESCRIPTION	NO. USED	REMARKS
501	984-119	SIDE HANDLE	1	TILL 9.1992
501A	303-659	SIDE HANDLE	1	SINCE 10.1992
502	971-677	STOPPER	1	TILL 9.1992
502A	303-709	DEPTH GAUGE	1	SINCE 10.1992

OPTIONAL ACCESSORIES

ITEM NO.	CODE NO.	DESCRIPTION	NO. USED	REMARKS
601A	879-344	TCT DRILL BIT SET (4,6,8,10MM)	1	
602	971-704	DRILL BIT (B) D12.0X160	1	
603	931-855	DRILL BIT (B) D13.0X160	1	
604	931-776	DRILL BIT (B) D14.3X160	1	
605	971-670	DRILL BIT (B) D16.0X160	1	
606	879-345	HSS DRILL BIT SET (2.0,3.2,4.8,6.5MM)	1	

*: ALTERNATIVE PARTS