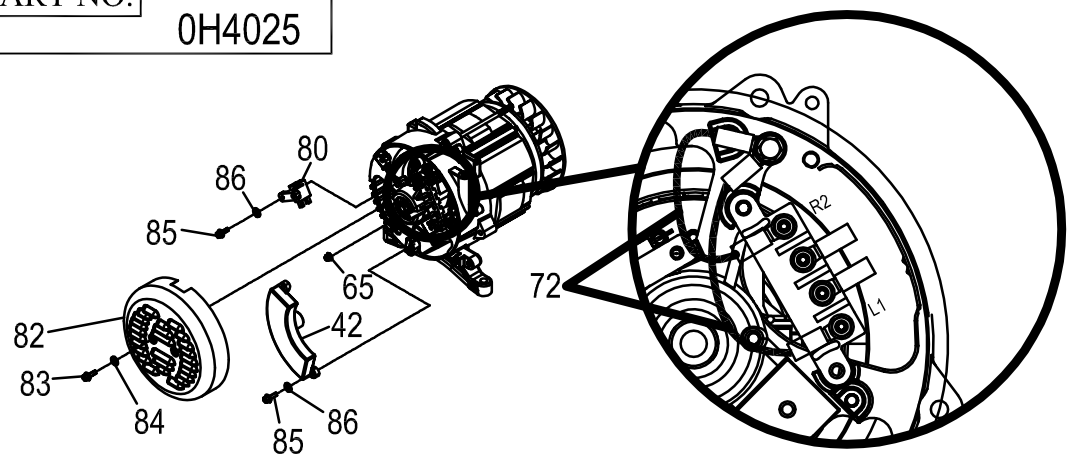
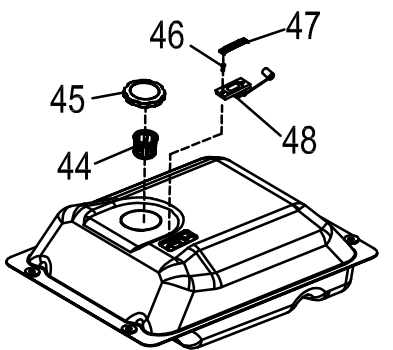


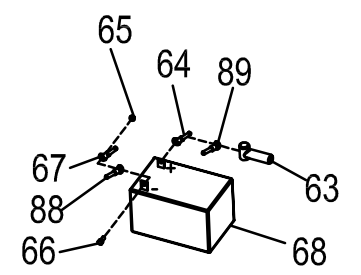
PART NO. 0H4025



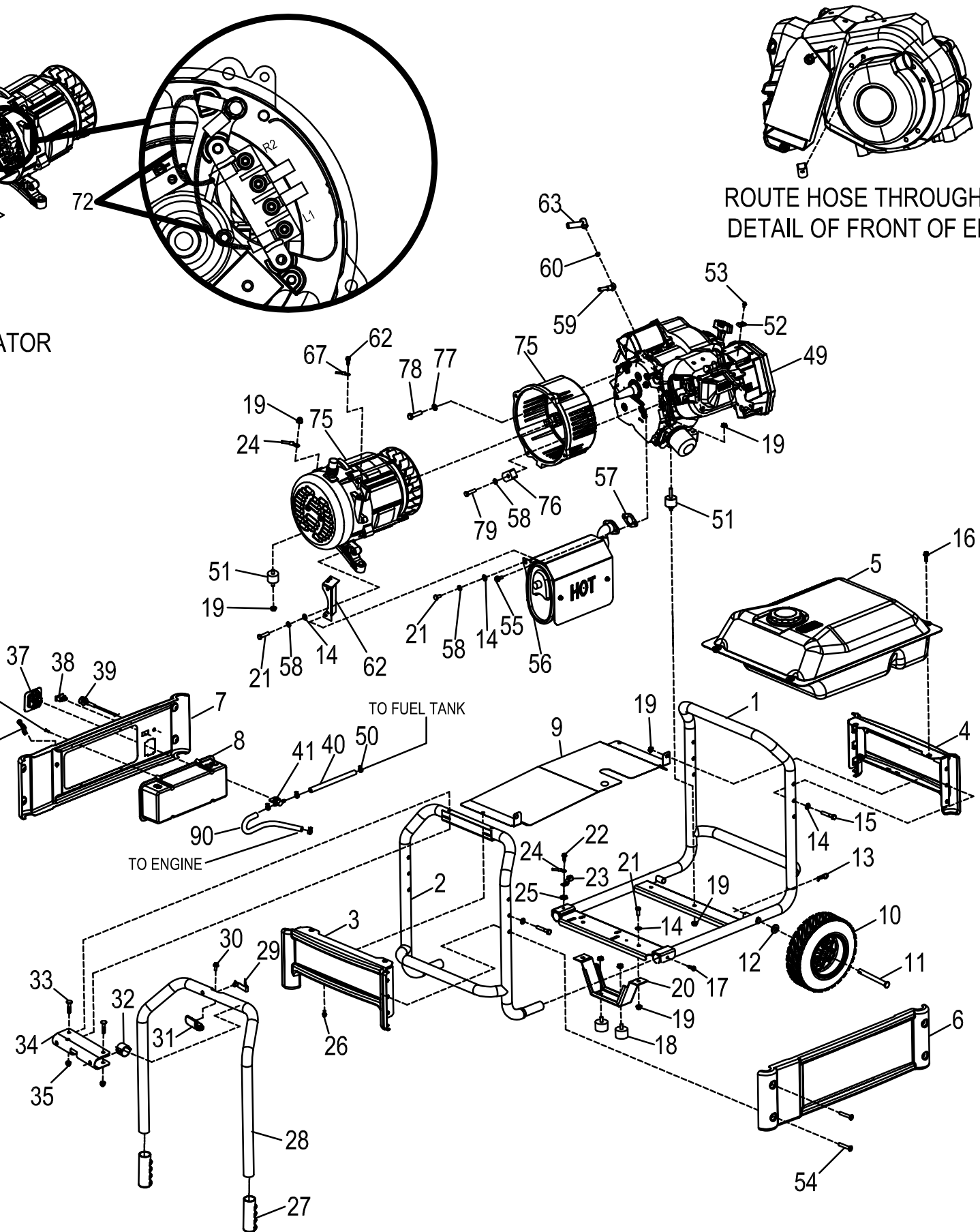
DETAIL OF ALTERNATOR



DETAIL OF GAS TANK

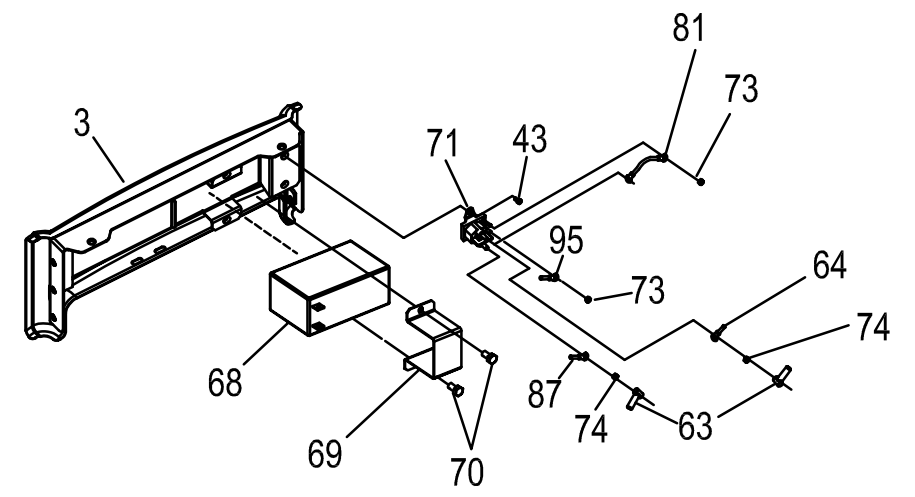


DETAIL OF BATTERY



ROUTE HOSE THROUGH CLIP  
DETAIL OF FRONT OF ENGINE

ITEM	PART #	QTY.	DESCRIPTION	ITEM	PART #	QTY.	DESCRIPTION
1	0H2395	1	FRAME BASE	62	0G9542	1	BRACKET MUFFLER
2	0H2391	1	FRAME BACK	63	0G6392	4	BOB
3	0H2392C	1	PANEL, ALT END	64	074260189	1	WIRE, BATTERY TO SOL
4	0H2392A	1	PANEL, ENG END	65	0H535	6	NUT LOCK M5-0.8
5	0H2564	1	TANK FUEL	66	0S2818	2	SCREW HHC M5-0.8 X 12
6	0H2394B	1	PANEL, SIDE	67	074260193	1	WIRE, BATTERY TO ALT
7	0H2394A	1	PANEL, CPNL SIDE	68	0G9449	1	BATTERY
8	0H2602G	1	30A XG RECEPTACLE PANEL	69	0H2764	1	BATTERY HOLD DOWN
9	0H6371	1	HEAT SHIELD	70	0Q2079	2	SCREW HHT M6-1.0 X 25
10	0H4420	2	XG RALLYE WHEEL	71	0B6729	1	STARTER CONTACTOR
11	0H1129	2	AXLE PIN	72	0H4768A	2	WIRE ASSY JUMPER
12	087171	2	WASHER FLAT 1/2SS	73	0B3338	2	NUT HEX LOCK #6-32
13	0H3443	2	COTTER HARPIN	74	0Z7529	2	NUT HEX LOCK 1/4-20
14	022145	10	WASHER FLAT 5/16M8	75	0H863	1	7kW ALTERNATOR W/UMPER WRES
15	051731	4	SCREW HHC M8-1.25 X 50	76	0G9832	1	BRACKET, MOUNTING, ALT 7KW
16	0G5445	4	SCREW HHT M6-1.2 X 20	77	046526	3	WASHER LOCK M10
17	0H5030	2	SCREW HHS 1/2 X 7/8 BZ	78	0Z2511	3	SCREW HHC 3/8-16 X 1-1/4
18	0H3590	2	WIRE MOUNT	79	0Q209	1	SCREW HHC 5/16-24 X 1-1/4 G
19	067989	14	NUT HEX FL WHZ M6-1.25	80	0H919	1	BRUSH HOLDER
20	0H0720	1	FOOT	81	0H0228C	1	WIRE, SOL TO SOL
21	039253	6	SCREW HHC M8-1.25 X 20	82	0H049	1	END COVER
22	0G2018	1	SCREW HHS 1/4-20 X 7/8	83	0S2818	2	SCREW HHC M50.8 X 12
23	055414	1	LUG SLDLS #2-#8 X 17/64 CU	84	049226	2	LOCK WASHER, M5
24	074260086	1	WIRE ASSY GND ALT TO BASE	85	049815	3	SCREW HHC M50.8 X 16
25	0A1698	1	WASHER LOCK SPECIAL 1/4	86	0S1713	3	FLAT WASHER, M6
26	090888	2	SCREW HHT M6-1.0 X 1	87	0H218	1	HARNES, ENGINE GH10, ES
27	0G8485	2	HANDLE GRPS	88	074260188	1	WIRE ASSEMBLY
28	0H2616	1	TUBE HANDLE	89	074260192	1	WIRE ASSEMBLY
29	0G5442	1	SNAP BUTTON	90	0H5762	1	FUEL LINE, FOR MED VALVE TO ENGINE
30	0G0926	1	SCREW HHCS M6-1 X 16				
31	0H3654	1	HANDLE STOP				
32	0H2205	2	BEARING, HANDLE				
33	0H0031	2	CHG CUSTOM 5/16 18 X 46				
34	0H2206B	1	BRACKET, HANDLE				
35	0G9486	2	CAP NUT 5/16-18				
36	0G6392	4	SCREW PPHH#8-16 X 0.66				
37	0H2142	1	FUEL VALVE HOLDER				
38	0G9549	1	SWITCH, START RUN-STOP				
39	0G9560A	1	CABLE, CHOKE				
40	0H3455D	1	FUEL HOSE				
41	0H3419	1	FUEL VALVE				
42	0H4284	1	AVR, 7KW ALTERNATOR				
43	090888	2	SCREW HHT M6-1.0 X 12				
44	0H1326	1	FUEL FILTER				
45	0H1325A	1	FUEL CAP CHROME				
46	0H1357	2	SCREW PPHM M5-0.8 X 12				
47	0H1359	1	PLATE, FUEL GAGE				
48	0H1345	1	FUEL GAGE, 153MM LONG ARM				
49	0H4021	1	XG7000E 410 ENGINE				
50	048031G	4	HOSE CLAMP				
51	0H2043	4	VIB MOUNT				
52	0E4190	1	CLAMP, CABLE				
53	0F5579	1	SCREW SHOULDER M5-0.8 X 20				
54	0H3587	8	SCREW FHSC M8-1.25 X 5 BZC				
55	0G3730	2	SCREW SHC M6-1.25 X 20 SEMS				
56	0H3033	1	MUFFLER, ASSY, 410				
57	090239	1	GASKET, EXHAUST				
58	022129	5	WASHER LOCK M6				
59	074260191	1	WIRE, SOL TO STARTER				
60	0E2236	1	NUT HEX LOCK M6-1				
61	0H0025	1	CHARGE JACK				



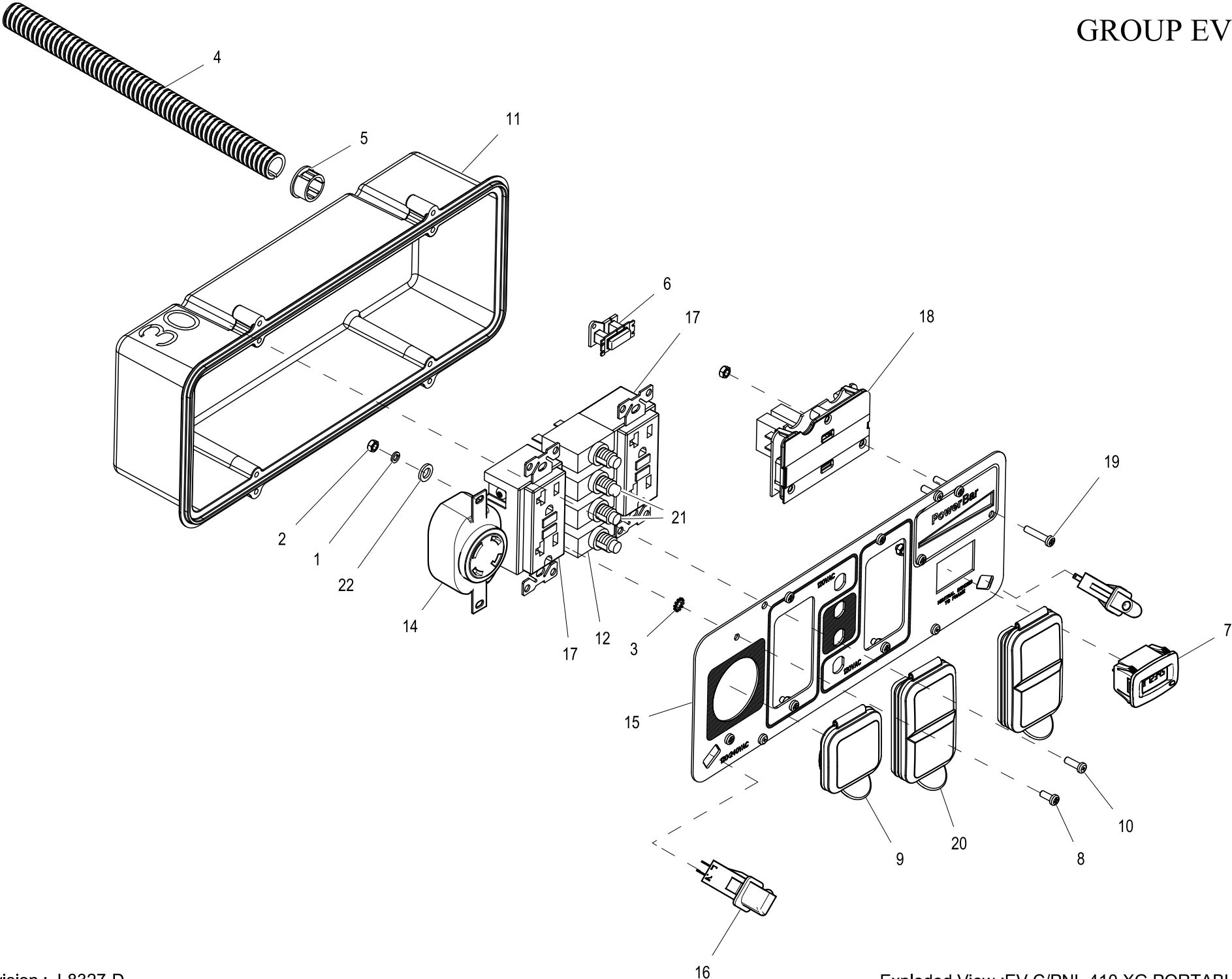
DETAIL OF BACK PANEL

E.C.O.	REV.	DATE
-	A	5/16/09
H-4930	B	8/18/09
H-5141	C	9/29/09
H-5344	D	11/04/09
H-5630	E	12/16/09

DO NOT SCALE

GROUP

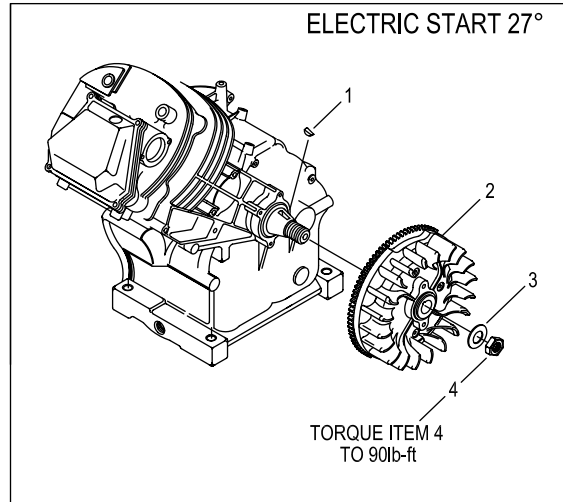
EXPLODED VIEW:		GENERATOR PARTS		GENERAC POWER SYSTEMS	
DRAWN BY:	GGP	DATE:	7/27/09	P.O. BOX 8 WAUKESHA, WIS. 53186	
CHECKED BY:	CR	DATE:	8/3/09	FIRST USE:	005798-0
APPROVED BY:	D. VALERIO	DATE:	8/5/09	PART NO.:	0H4025
RELEASED FOR PRODUCTION BY:	B. BRANDENBURG	DATE:	8/3/09	REV.:	E



**EXPLODED VIEW: EV C/PNL 410 XG PORTABLE 6.5KW****DRAWING #: 0H4099****GROUP EV**

<b>ITEM</b>	<b>PART#</b>	<b>QTY.</b>	<b>DESCRIPTION</b>
1	022264	6	WASHER LOCK #8-M4
2	051715	9	NUT HEX M4-0.7 G8 YEL CHR
3	026579	1	WASHER LOCKF EXT #8 STEEL
4	077043B	1	CONDUIT FLEX .50"ID
5	0A5489	1	SNAP BUSHING.75 OPEN
6	0D4804B	1	XFMR IDLE CURRENT
7	0H8214	1	HOUR METER W/ALERTS AC/DC
8	0G9060	2	SCREW PPHM M4-0.7 X 10 BZC
9	0G9391	1	COVER,30A 120/240V
10	0G8382	4	SCREW PPPH #8-16 X .66" BZC
11	0G9756	1	RECTANGLE PANEL STORM-GEN
12	0H0265C	2	CB 20A 1P 120V CUL/CSA JOEMEX
13	SEE TABLE 1	-	WIRE HARNESS (NOT SHOWN)
14	0H2929	1	OUTLET 30A 120/250V SPCGR
15	0H3343F	1	PANEL COVER, XG PORTABLE
16	0H6784	2	LED CONTROL PANEL SNAP-FIT XG
17	0D4966	2	OUTLET 20A 120V GFCI GF20BK
18	SEE TABLE 1	-	TRULOAD POWERBAR ASSY
19	0H3968	3	SCREW PPHM M4-0.7 X 20 BLK ZC
20	0G9392	2	COVER, 20A 120V GFCI/DUPLEX
21	0H0265E	2	CB 30A 1P 120V CUL/CSA JOEMEX
22	043180	6	WASHER FLAT M4

FLYWHEEL OPTION  
ENGINE PRODUCTION LEVEL 10E



1	082774	1	KEY, WOODRUFF 4 x 19D
2	091222C	1	ASSY, FLYWHEEL W/RING GEAR 27 DEGREE
3	067198N	1	WASHER, BELV-20 X 2.2
4	067890	1	NUT, HEX – FLYWHEEL