

GP3500iO Portable Generator

Parts Manual

 **WARNING**

Operating, servicing and maintaining this equipment can expose you to chemicals including engine exhaust, carbon monoxide, phthalates, and lead, which are known to the State of California to cause cancer and birth defects or other reproductive harm. To minimize exposure, avoid breathing exhaust, do not idle the engine except as necessary, service your equipment in a well-ventilated area and wear gloves or wash your hands frequently when servicing your equipment.

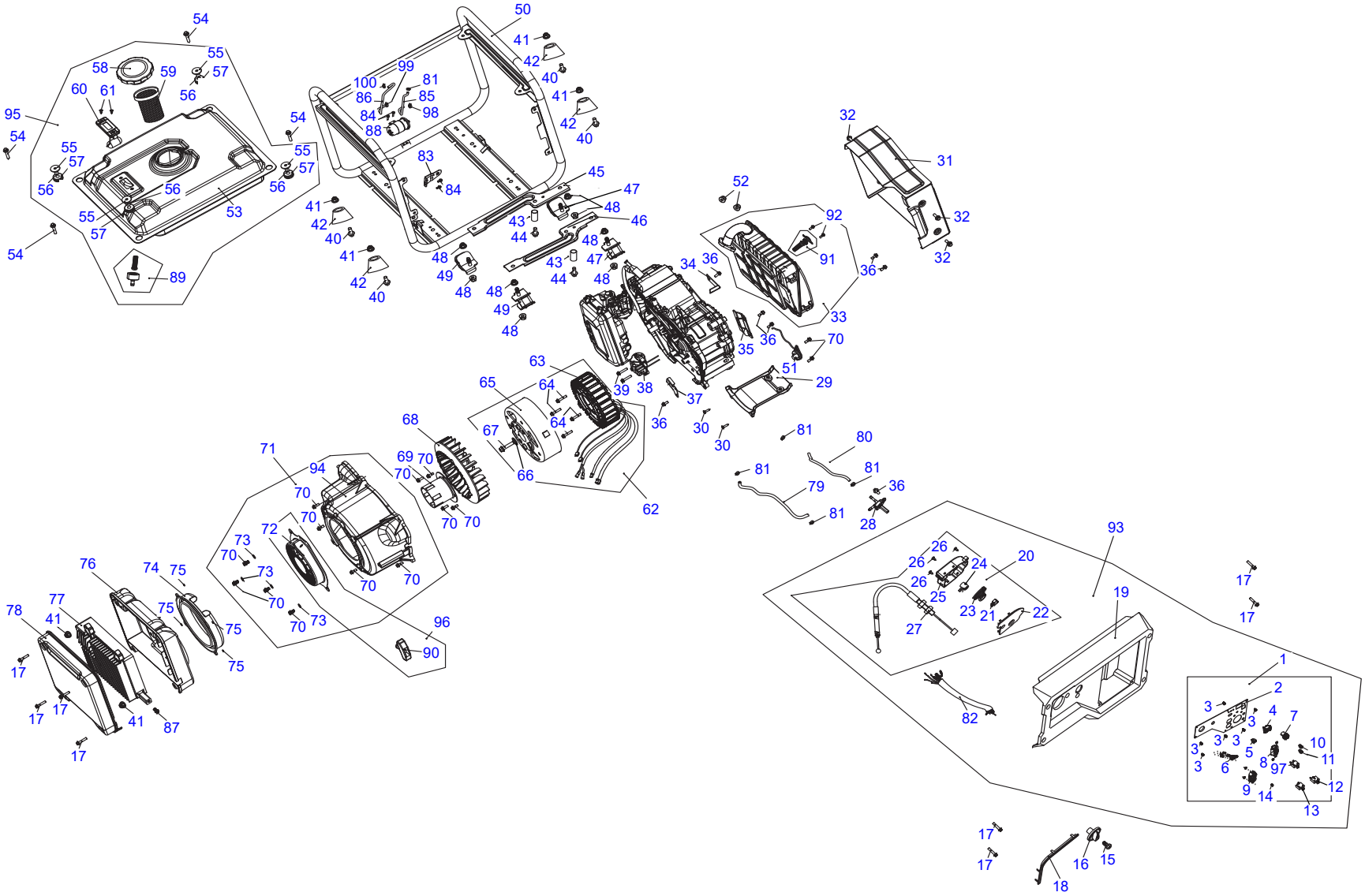
For more information go to

www.P65Warnings.ca.gov.

(000393)

The information in this manual is accurate based on products produced at the time of publication. The manufacturer reserves the right to make technical updates, corrections, and product revisions at any time without notice.

www.generac.com or 1-888-GENERAC



005489

ITEM	PART NO.	DESCRIPTION	QTY
1	10000022094	CONTROL PANEL ASSEMBLY	1
2	ORDER ITEM 1	PANEL FACE PLATE	1
3	10000021873	TAPPING SCREW (M5X12MM)	6
4	0G8321	HOUR METER	1
5	10000022338	IDLE SPEED SWITCH	1
6	10000021956	LED INDICATOR LIGHT	1
7	10000022115	USB PORTAL	1
8	10000021964	RECEPTACLE (L5-30R 120V 30A RV)	1
9	0H2928	RECEPTACLE (5-20R 120V 20A DUPLEX)	1
10	10000022088	PARALLEL SOCKET (RED)	1
11	10000022116	PARALLEL SOCKET (BLACK)	1
12	0K20680112	CIRCUIT BREAKER (30A)	1
13	0H0265D	CIRCUIT BREAKER (25A)	1
14	10000024338	GROUND TERMINAL	1
15	10000021895	PHILIPS HEAD SCREW (M4X6MM)	1
16	10000022067	FUEL SWITCH KNOB	1
17	10000022117	FLANGED HEX HEAD BOLT (M5X16MM)	8
18	10000022131	TRIM	1
19	10000022132	CONTROL PANEL HOUSING	1
20	10000022109	COMBINATION SWITCH ASSEMBLY	1
21	ORDER ITEM 20	MICRO SWITCH	1
22		FRONT COVER	1
23		SWITCH SLIDER	1
24		ROTATION SHAFT	1
25		BACK COVER	1
26		SELF TAPPING SCREW	3
27		CHOKE CABLE ASSEMBLY	1
28	10000022123	FUEL SWITCH	1
29	10000022119	VENTILATION HOOD	1
30	10000022089	PAN HEAD SCREW	2
31	10000022074	HEAT SHIELD	1

ITEM	PART NO.	DESCRIPTION	QTY
32	10000022095	SCREW (M6X12MM)	3
33	10000022096	MUFFLER ASSEMBLY	1
34	10000022360	WIND SHROUD	1
35	10000022287	MUFFLER BRACKET	1
36	0G84420194	FLANGED HEX BOLT (M6X12)	6
37	10000022097	STATOR HARNESS CLIP	1
38	10000022075	IGNITION COIL	1
39	0J35220156	FLANGED HEX HEAD BOLT (M6X20MM)	2
40	0G84420217	FLANGED HEX HEAD BOLT (M6X14MM)	4
41	10000021871	FLANGED HEX HEAD NUT (M6)	6
42	10000022098	RUBBER FEET	4
43	0J35220165	DOWEL PIN	2
44	0G84420201	FLANGED HEX BOLT (M8X25MM)	2
45	10000022154	ENGINE SUPPORT PLATE (LEFT)	1
46	10000022127	ENGINE SUPPORT PLATE (RIGHT)	1
47	10000022146	ENGINE MOUNT	2
48	0K22930127	FLANGED HEX NUT (M8)	8
49	10000022163	ENGINE MOUNT	2
50	10000022201	FRAME	1
51	10000022165	THROTTLE CONTROL	1
52	0J35220161	FLANGED HEX NUT	2
53	10000022174	FUEL TANK ASSEMBLY	1
54	0H58410165	FLANGED HEX BOLT (M6X25MM)	4
55	10000022202	FLAT WASHER	4
56	0H1610A	ANTI-CRUSH INSERT	4
57	0J4606	FUEL TANK RUBBER MOUNT	4
58	10000022148	FUEL CAP	1
59	100836A	FUEL SCREEN CUP	1
60	10000022193	FUEL GAUGE	1
61	10000007709	FUEL GAUGE SCREW	2
62	10000017391	ALTERNATOR	1
63	ORDER ITEM 62	STATOR	1

ITEM	PART NO.	DESCRIPTION	QTY
64	10000022204	SOCKET HEAD CAP SCREW (M6X65MM)	4
65	ORDER ITEM 62	ROTOR	1
66	10000022168	FLAT WASHER	1
67	0G84420201	FLANGED HEX BOLT (M8X25MM)	1
68	10000022166	COOLING FAN	1
69	10000022203	STARTING CUP	1
70	10000022194	FLANGED HEX BOLT (M6X16MM)	14
71	10000022195	BLOWER HOUSING WITH RECOIL	1
72	ORDER ITEM 96	RECOIL ASSEMBLY WITHOUT HANDLE	1
73	10000023565	WASHER	4
74	10000022139	SEALING RING	1
75	10000022176	LOCK WASHER	4
76	10000022139	VENTILATION COVER	1
77	10000022157	INVERTER	1
78	10000022196	VENTILATION COVER	1
79	10000022197	FUEL HOSE (450MM)	1
80	10000022158	FUEL HOSE (330MM)	1
81	0J88870130	HOSE CLAMP	4
82	10000022260	CONTROL PANEL HARNESS	1
83	10000022251	BRACKET	1
84	0J00620100	HEX HEAD BOLT (M5X10MM)	4
85	10000022252	CARBON CANISTER HOSE	1
86	10000022186	CARBON CANISTER HOSE	1

ITEM	PART NO.	DESCRIPTION	QTY
87	0G84420194	FLANGED HEX HEAD BOLT (M6X12)	1
88	10000022208	CARBON CANISTER	1
89	10000022270	FUEL CONNECTOR	1
90	10000022271	RECOIL ROPE HANDLE	1
91	10000022361	SPARK ARRESTOR	1
92	10000022318	FLANGED HEX BOLT (M5X12)	2
93	10000022339	PANEL HOUSING-MICRO SWITCH ASSEMBLY	1
94	10000023537	BLOWER HOUSING	1
95	10000023538	FUEL TANK ASSEMBLY-WITH DECALS	1
96	10000023545	RECOIL ASSEMBLY WITH HANDLE	1
97	0K20680112	CIRCUIT BREAKER (30A)	1
98	10000026215	HOSE CLAMP	1
99	0J35220174	HOSE CLAMP	1
100	0J25910115	HOSE CLAMP	1

Part No. 10000017733 Rev. A 04/02/2018
©2018 Generac Power Systems, Inc.
All rights reserved
Specifications are subject to change without notice.
No reproduction allowed in any form without prior written consent from Generac Power Systems, Inc.



Generac Power Systems, Inc.
S45 W29290 Hwy. 59
Waukesha, WI 53189
1-888-GENERAC (1-888-436-3722)
www.generac.com