



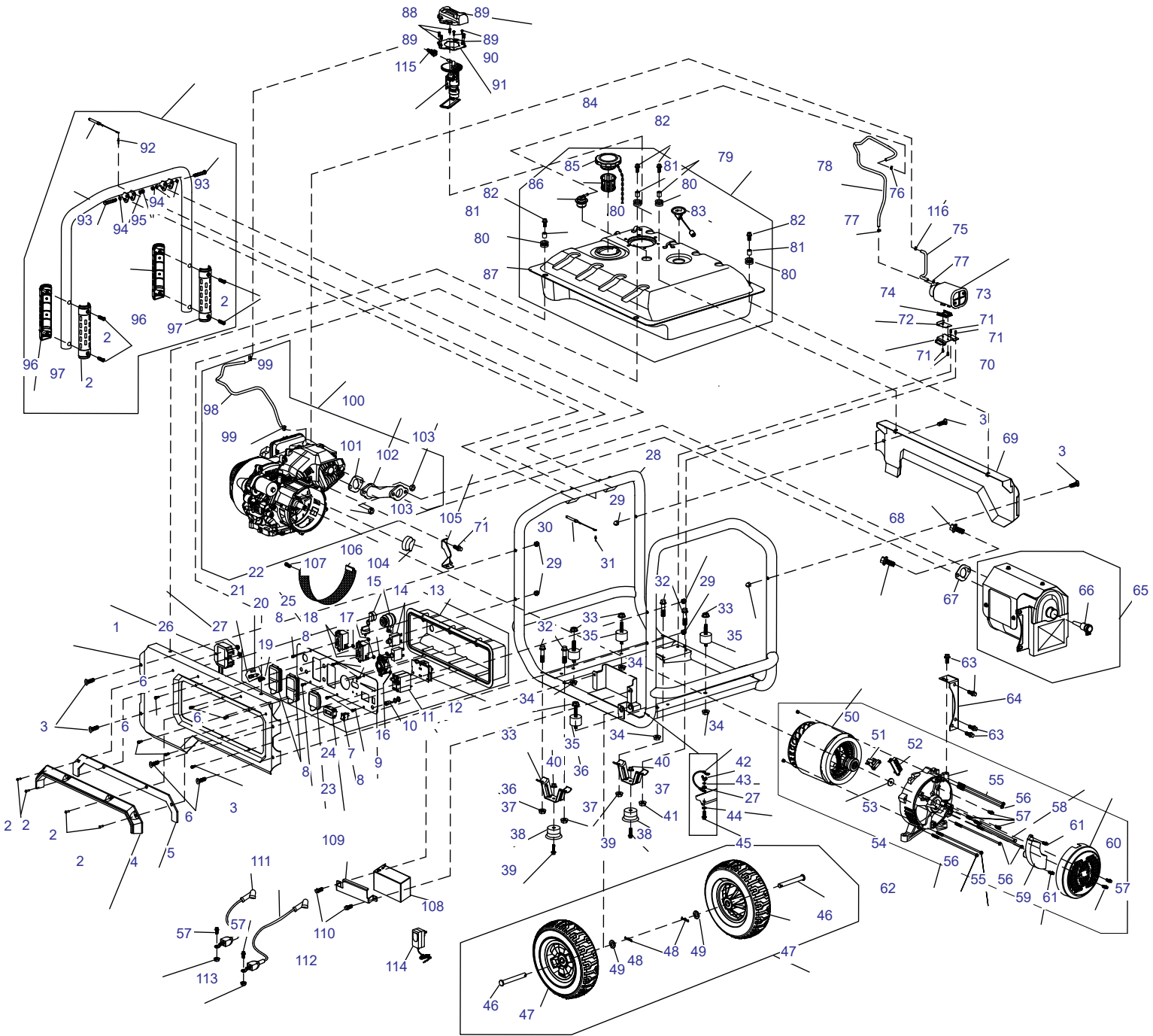
XT8000EFI Portable Generator

Parts Manual

Model No. G0071620

The information in this manual is known to be accurate as of the date of release shown on the cover. However, engineering changes can occur without notice. To obtain the proper parts, be sure to use the serial number of the unit being serviced when ordering from this manual. Always refer to any part notes and changes before ordering. All other parts not shown in the manual can be found on Generac's exploded view drawings at www.generac.com or by contacting your local authorized dealer.

www.generac.com or 1-888-GENERAC



009389

ITEM	PART NO.	DESCRIPTION	QTY
1	10000028154	PANEL, CONTROL SIDE	1
2	10000028165	SCREW (M6X25MM)	8
3	0H1780	BOLT, CURVED HEAD (M8X40MM)	6
4	10000028184	VISOR, PLASTIC	1
5	10000028166	VISOR, GASKET	1
6	10000028174	SCREW, PAN HEAD (ST4.8X16MM)	6
7	0L36230115	SWITCH, IDLE	1
8	0H91980159	SCREW, PAN HEAD (M5X16MM)	6
9	10000028732	FACE PLATE	1
10	0J4959	INPUT, 12VDC BATTERY CHARGER	1
11	10000028202	BREAKER, CIRCUIT (BSB-30 30A)	1
12	10000028185	METER, POWER	1
13	10000028155	COVER, CONTROL PANEL BACK	1
14	0H0265C	BREAKER CIRCUIT (20A)	2
15	A0000181523	SWITCH, ENGINE	1
16	0K95240111	RECEPTACLE (L14-30R)	1
17	0J86620108	NUT (M4)	6
18	10000028117	RECEPTACLE (GFCI 5-20R 120V 20A)	2
19	0G9392	COVER, RECEPTACLE	2
20	10000028167	LAMP, RED	1
21	10000028118	HOLDER INLINE FUSE	1
22	0D7178Z	FUSE, 5 AMP 250V 5X20MM	1
23	0G9391	COVER, RECEPTACLE	1
24	0G8321	METER, HOUR	1
25	10000028168	PANEL ASSEMBLY, CONTROL	1
26	10000028169	RECTIFIER	1
27	10000021871	NUT (M6)	3
28	10000028147	FRAME	1
29	0H1782	NUT, LOCKING CAP (M8)	6
30	10000028186	CHAIN	1
31	N/A	RIVET	1
32	G073144	BOLT, (M8X45MM)	4
33	0J4029	NUT(M10X1.25)	4
34	0K22930127	NUT (M8)	4
35	0K09150110	MOUNT, RUBBER VIBRATION	4
36	0J93540ST03	BRACKET, FOOT	2
37	0K0098	NUT (M8)	4
38	0K0099	ISOLATOR, FOOT	2

ITEM	PART NO.	DESCRIPTION	QTY
39	0K09150111	BOLT (M6X28MM)	2
40	0K0105	NUT (M6)	2
41	0K20670114	WIRE ASSEMBLY, GROUND	1
42	0K0094	NUT, BUTTERFLY (M6)	1
43	0J47870118	WASHER, FLAT	1
44	0K0093	WASHER, SPECIAL LOCK	1
45	0J35220156	BOLT, FLANGE (M6X20MM)	1
46	0J9808	PIN, AXLE	2
47	0H9589A	WHEEL	2
48	10000007707	PIN, COTTER	2
49	0L36230122	WASHER, FLAT	2
50	10000028197	ALTERNATOR	1
51	0H0919	BRUSH, ALTERNATOR	1
52	0J83630111	TERMINAL, WIRE	1
53	0J86620102	WASHER, FLAT (M10X4)	1
54	0H91980171	HOUSING, REAR BEARING CARRIER	1
55	0H9838C112	BOLT, ROTOR (M5X232MM)	2
56	0H92090105	BOLT, STATOR (M6X193MM)	4
57	0J4967	BOLT, (M5X12MM)	8
58	0H92090104	BOLT, ROTOR (M10X285MM)	1
59	0H91980178	REGULATOR, AUTOMATIC VOLTAGE	1
60	10000028206	COVER, GENERATOR END	1
61	0J4968	SCREW, HHFC M5-0.8X16MM)	3
62	0L0566	ALTERNATOR ASSEMBLY	1
63	0E9470	BOLT (M8X16MM)	4
64	0J97760112	BRACKET, MUFFLER	1
65	10000028260	MUFFLER	1
66	A0000181524	ARRESTOR, SPARK	1
67	10000028234	GASKET, EXHAUST MUFFLER	1
68	0E9507B	BOLT (M8X25MM)	2
69	10000028253	PANEL, EXHAUST SIDE	1
70	0J1962	BRACKET, CARBON CANISTER TO FRAME	1
71	0H58410163	BOLT (M6X12MM)	5
72	0J19610ST03	BRACKET, CARBON CANISTER STOP	1
73	0J47650ST03	WELDMENT CARBON CANISTER MOUNT	1

ITEM	PART NO.	DESCRIPTION	QTY
74	0H0957	CANISTER, CARBON 682CC	1
75	0K18360110	TUBE, BREATHER, CARBON CANISTER	1
76	0J88870130	CLAMP/COLLAR	1
77	0K97920112	CLAMP, HOSE	1
78	10000028207	HOSE, PRE FORMED	1
79	10000028752	TANK ASSEMBLY, FUEL	1
80	10000028235	MOUNT, FUEL TANK RUBBER	4
81	10000028208	INSERT, ANTI-CRUSH	4
82	0E9507C	SCREW, HHFC M8- 1.25X20MM WITH M10	4
83	0K09150113	GAUGE, FUEL (8 GALLON TANK)	1
84	0H0958	CAP ASSEMBLY, FUEL (SEALED CHROME	1
85	10000035980	FILTER, FUEL (IN TANK)	1
86	10000028261	VALVE, ROLL OVER	1
87	ORDER ITEM 79	WELDMENT, FUEL TANK	1
88	10000028255	COVER, FUEL PUMP	1
89	0J79090111	SCREW, PAN HEAD (M5X10 MM)	6
90	10000028256	CLAMP, FUEL PUMP	1
91	10000028257	PUMP, FUEL	1
92	10000028236	HANDLE, BENT TUBE	1
93	10000028242	BOLT (M8X55MM)	2
94	10000028280	WASHER, FLAT	2
95	10000028262	NUT (M8)	2
96	10000028282	GRIP, HANDLE (TOP)	1
97	10000028263	GRIP, HANDLE (BOTTOM)1	1
98	10000028237	HOSE, FORMED FUEL	1
99	A0000181527	CLAMP	1

ITEM	PART NO.	DESCRIPTION	QTY
100	10000023879	ENGINE, LC192FD-E	1
101	0G9028	GASKET, EXHAUST CYLINDER	1
102	10000026982	MANIFOLD, EXHAUST	1
103	0J35220161	NUT, HEX (M8)	2
104	0J86620104	BAFFLE	1
105	1000007686	BRACKET, AIR CLEANER	1
106	10000028273	COVER, DUST	1
107	0J00620100	BOLT, FLANGE (M5X10MM)	1
108	10000007800	BATTERY (9AH)	1
109	10000028286	COVER, BATTERY	1
110	0G84420194	BOLT (M6X12MM)	2
111	0J4157B	CABLE, BATTERY POSITIVE RED	1
112	0J4157A	CABLE, BATTERY NEGATIVE, GREEN	1
113	0H3535	NUT (M5)	2
114	10000020426	CHARGER, BATTERY	1
115	10000028743	CONNECTOR, QUICK CHANGE	1
116	0J35220174	LOOP, TUBE (CLAMP)	1
N/S	A0000143591	COVER, INLINE FUSE	2
N/S	10000028572	FUSE, 10A LITTLEFUSE SLO-BLO 1.25INCH X 0.25 INCH	1
N/S	0K3029	FUSE, FAST CERAMIC 1/4X1-1/4	1

NOTE: To order replacement engine parts, see manual 10000023936.

NOTE: N/A means the part is not available.

Part No. 10000023357 Rev. B 04/04/2019
 ©2019 Generac Power Systems, Inc.
 All rights reserved
 Specifications are subject to change without notice.
 No reproduction allowed in any form without prior written
 consent from Generac Power Systems, Inc.



Generac Power Systems, Inc.
 S45 W29290 Hwy. 59
 Waukesha, WI 53189
 1-888-GENERAC (1-888-436-3722)
www.generac.com