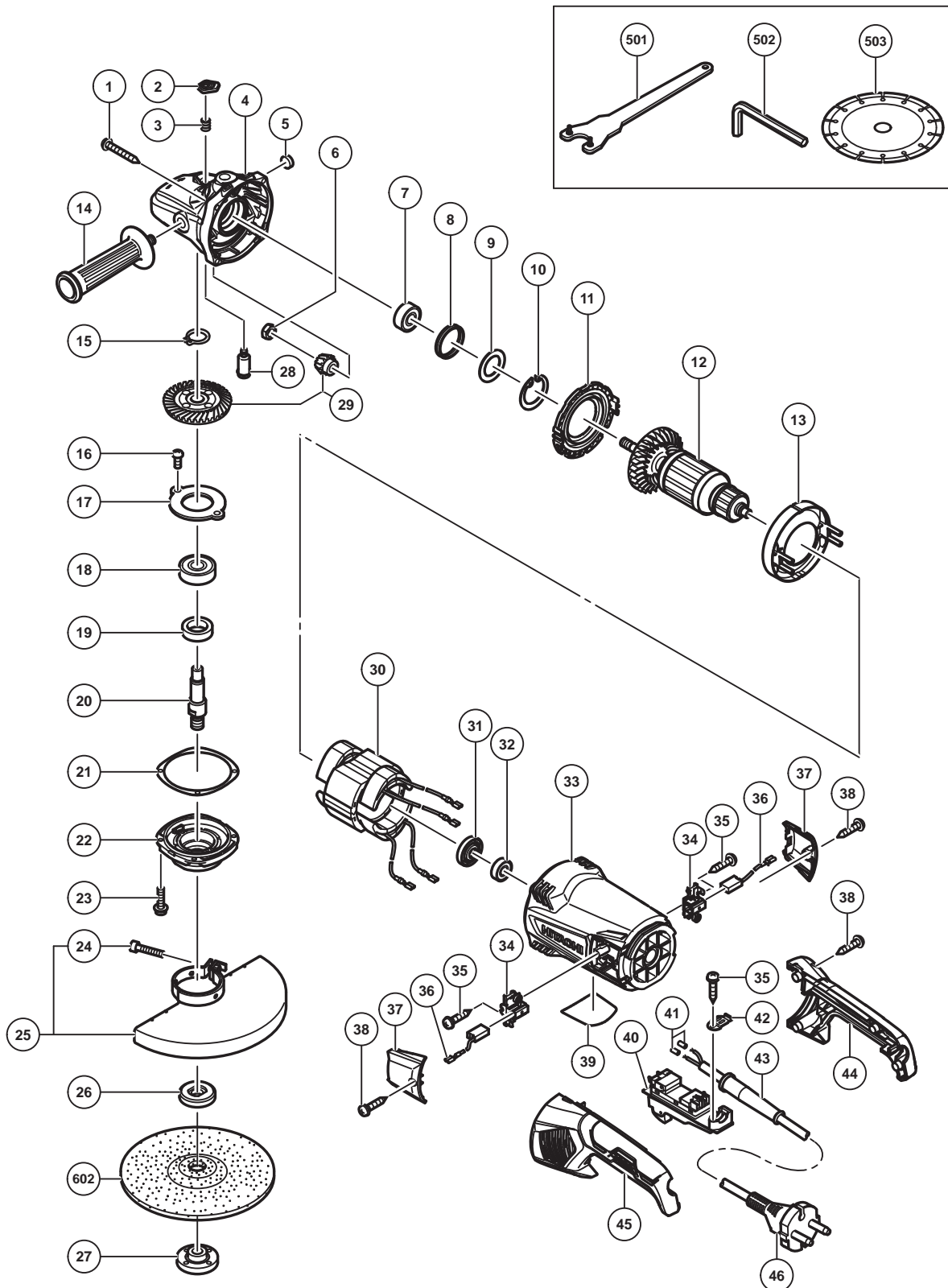


ELECTRIC TOOL PARTS LIST

■ DISC GRINDER
Model G 18ST

2014-12-11
(E1)



PARTS

G 18ST

ITEM NO.	CODE NO.	DESCRIPTION	NO. USED	REMARKS
1	323209	TAPPING SCREW (W/FLANGE) D5 X 35 (BLACK)	4	
2	337641	PUSHING BUTTON	1	
3	320219	SPRING	1	
4	337650	GEAR COVER ASS'Y	1	INCLUD.2,3,5,7-10,28
5	937033	FELT WASHER	1	
6	320226	SPECIAL NUT M10	1	
7	6301VV	BALL BEARING 6301VVCMP2L	1	
8	330031	RUBBER RING	1	
9	337642	WASHER	1	
10	948391	RETAINING RING FOR D40 HOLE	1	
11	337640	FAN GUIDE (B)	1	
* 12	360982D	ARMATURE 120V	1	
* 12	360982E	ARMATURE 220V-230V	1	
* 12	360982F	ARMATURE 240V	1	
13	337639	FAN GUIDE (A)	1	
14	937981	SIDE HANDLE FOR M14	1	
15	939542	RETAINING RING FOR D12 SHAFT (10 PCS.)	1	
16	949236	MACHINE SCREW M5 X 10 (10 PCS.)	2	
17	320229	BEARING COVER (B)	1	
18	6302VV	BALL BEARING 6302VVCMP2L	1	
19	990852	FELT PACKING (B)	1	
20	320234	SPINDLE	1	
21	320228	SEAL PLATE	1	
22	320227	PACKING GLAND	1	
23	994192	HEX. SOCKET HD. BOLT (W/FLANGE) M5 X 16	4	
24	949760	HEX. SOCKET HD. BOLT M8 X 25 (10 PCS.)	1	
25	338291	WHEEL GUARD ASS'Y	1	INCLUD.24
26	937907Z	WHEEL WASHER (C)	1	
27	937909Z	WHEEL NUT M14 X 2	1	
28	306890	LOCK PIN	1	
29	337919	GEAR AND PINION SET	1	
* 30	340888C	STATOR 110V	1	
* 30	340888E	STATOR 220V-230V	1	
* 30	340888F	STATOR 240V	1	
31	330029	DUST SEAL	1	
32	6000VV	BALL BEARING 6000VVCMP2L	1	
33	337643	HOUSING	1	
34	337646	BRUSH HOLDER	2	
35	984750	TAPPING SCREW (W/FLANGE) D4 X 16	3	
* 36	999059	CARBON BRUSH (1 PAIR)	2	
* 36	999059	CARBON BRUSH (1 PAIR)	1	FOR BRA
* 36	999093	CARBON BRUSH (AUTO STOP TYPE) (1 PAIR)	1	FOR BRA
37	337649	BRUSH COVER	2	
38	305812	TAPPING SCREW (W/FLANGE) D4 X 16 (BLACK)	6	
39		NAME PLATE	1	
* 40	320239	SWITCH (2P PILLAR TYPE) W/SAFETY LOCK	1	OFF/ON LOCK
* 40	320238	SWITCH (2P PILLAR TYPE) W/SAFETY LOCK	1	OFF/LOCK
41	981373	TUBE (D)	2	
42	331336	CORD CLIP	1	
* 43	958049	CORD ARMOR D8.2	1	

STANDARD ACCESSORIES

G 18ST

ITEM NO.	CODE NO.	DESCRIPTION	NO. USED	REMARKS
501	325491	WRENCH	1	
502	872422	HEX. BAR WRENCH 6MM	1	
* 503		DIAMOND CUTTER 180MM-D22.2 HOLE	1	FOR EUROPE,RUS SUPPLIED WITH ITEM NO.601

OPTIONAL ACCESSORIES

ITEM NO.	CODE NO.	DESCRIPTION	NO. USED	REMARKS
* 601	305459	DIAMOND WHEEL (SEGMENT) 180MM-D22.2 HOLE	1	FOR EUROPE,RUS
602	316824	D. C. WHEELS 180MM A24R (25 PCS.)	1	
603	310337	SUPER WASHER	1	
604	323993	PIPE HANDLE SET	1	INCLUD.605
605	985597	BOLT M14	2	FOR PIPE HANDLE
606	332795	WHEEL GUARD BASE SET	1	WITH BASE FOOT
607	332796	WHEEL GUARD (FOR CUTTING)	1	WITHOUT BASE FOOT