



**BOSCH**

# Cordless Hammer Drill

GBH 18V-21 | 3 611 J11 110

---

## Table of Content

Spare parts list.....	2
Illustration - Type.....	4

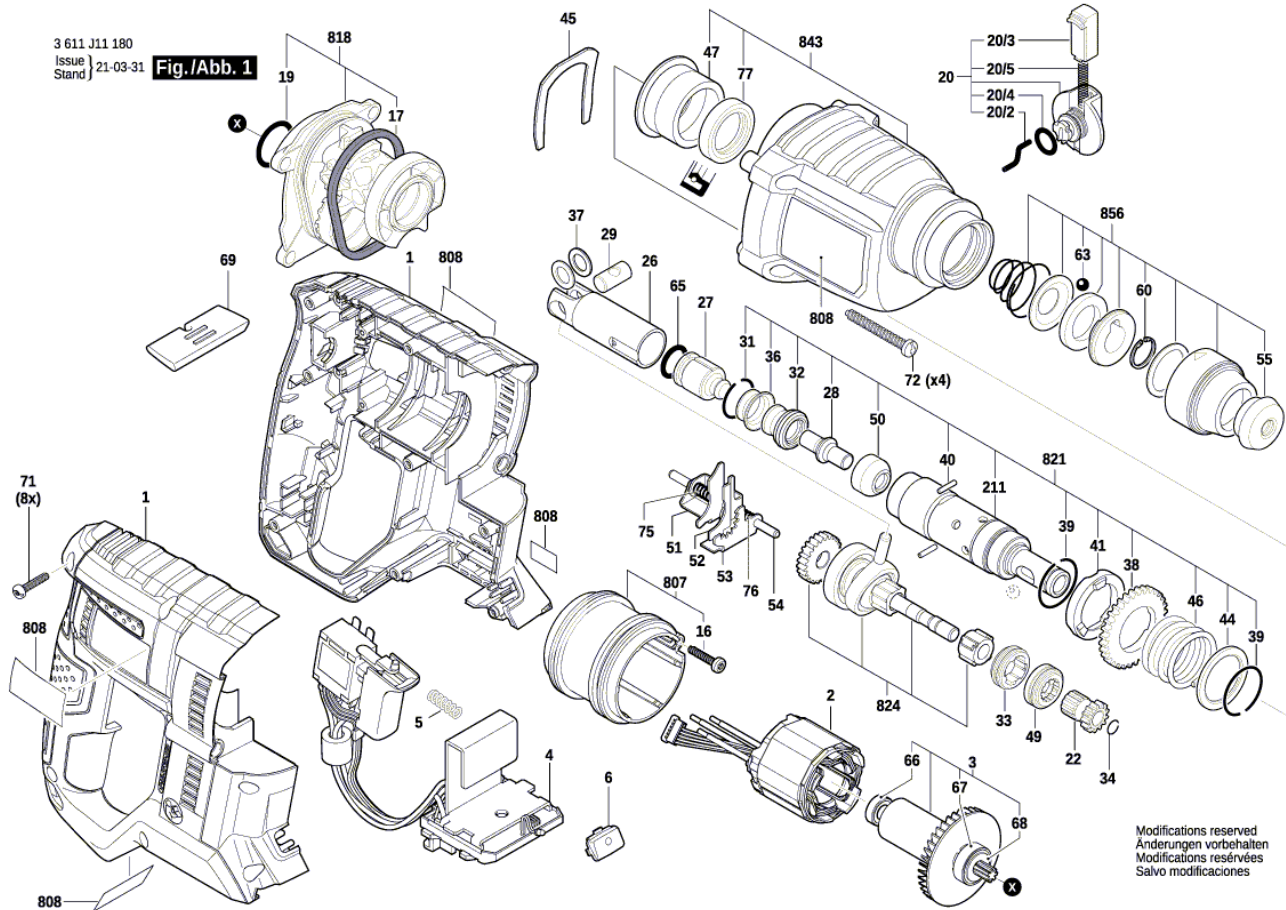
**Spare parts list**

<b>Item</b>	<b>Part Number</b>	<b>Description</b>	<b>Illustration</b>
1	1 619 P15 614	Motor Housing	1
2	1 619 P15 329	Stator	1
3	1 619 P15 328	Rotor	1
4	1 600 A02 0T1	Electronic Module	1
5	2 604 690 055	Compression Spring	1
6	1 619 P13 744	Lens	1
16	2 603 490 022	Screw 4x16	1
17	1 610 290 108	O-Ring	1
19	1 610 210 184	O-Ring 22,0x2,5 MM	1
20	1 612 026 151	Clamp Handle BLACK	1
20/2	1 614 690 009	Driver Pin	1
20/3	1 612 026 035	Switch Button RED	1
20/4	1 610 210 046	O-Ring 10,5x2,7 MM	1
20/5	1 614 611 006	Compression Spring	1
22	1 616 328 053	Gear Sleeve	1
26	1 618 700 083	Hammer Piston	1
27	1 618 710 085	Striker	1
28	1 613 124 084	Striker Pin	1
29	1 613 100 034	Piston Pin	1
31	1 619 P09 816	Retaining ring	1
32	1 610 508 051	Rubber Bushing	1
33	1 615 820 103	Switching Element	1
34	1 619 P00 829	Retaining ring	1
36	1 610 551 008	Holding Plate	1
37	1 610 100 016	Guide Disc	1
38	1 616 317 084	Cylindrical Gear	1
39	1 614 601 055	Retaining ring	1
40	1 613 100 032	Straight Pin	1
41	1 610 102 072	Ratchet Disc	1
44	1 610 102 092	Friction Washer	1
45	1 611 016 003	Holding Plate	1
46	1 614 630 003	Compression Spring	1
47	1 610 202 031	Plain bearing	1
49	1 615 820 104	Switching Element	1
50	1 619 P11 562	Guide Bushing	1

# Cordless Hammer Drill | GBH 18V-21 | 3 611 J11 110

				<b>Spare parts list</b>	
<b>Item</b>	<b>Part Number</b>	<b>Description</b>		<b>Illustration</b>	
51	1 610 021 004	Shift Plate			1
52	1 610 021 006	Shift Plate			1
53	1 610 021 005	Shift Plate			1
54	1 613 023 005	Guide Rod			1
55	1 610 508 052	Protective Cap			1
60	1 614 601 077	Spring retaining ring			1
63	1 903 230 013	Ball	DIN 5401-Ø7MM-III-ST		1
65	1 610 210 244	O-Ring	13,0x3,0 MM		1
66	1 619 P12 083	Ball Bearing			1
67	1 619 P16 119	groove ball bearing			1
68	1 600 100 037	Plain Washer			1
69	1 619 P13 747	Change-Over Switch			1
71	2 603 490 023	Torx Oval-Head Screw	4x20		1
72	1 619 P09 645	Torx Oval-Head Screw			1
75	1 614 643 025	Compression Spring			1
76	1 614 643 023	Compression Spring			1
77	1 610 283 048	Shaft Seal			1
211	1 619 P09 815	Hammer Pipe			1
807	1 619 P15 676	Intermediate housing			1
808	1 619 P16 108	Label			1
818	1 619 P15 677	Intermediate Flange			1
821	1 619 P09 617	Hammer Pipe			1
824	1 617 000 6BC	Jack Shaft			1
843	1 619 P15 678	Gear Housing			1
856	1 617 000 6D3	Protection Sleeve			1
651	1 613 001 009	Depth-Gauge	SW 6x210 MM		2
691/895	1 619 P14 336	Latch			2
822	1 602 025 08X	Auxiliary Handle			2
822/120	1 602 025 07H	Auxiliary Handle			2
822/124	1 611 316 021	Clamping Band	Ø50 MM		2
822/125	1 613 490 002	T-Head Bolt	M8x40 MM		2
822/802	1 617 000 475	Support clamp			2
892	1 615 430 020	Grease Tube	225 ML		2
893	1 615 430 001	Grease Tube	225 ML		2

Illustration - Type - E

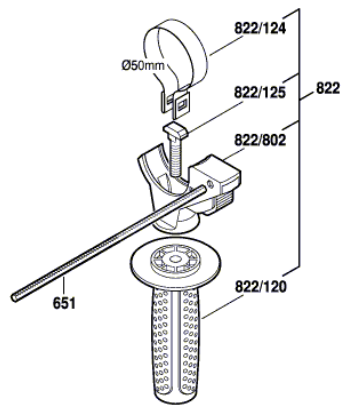


3 611 J11 180  
Issue  
Stand | 21-03-31

Fig./Abb. 1

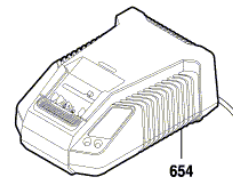
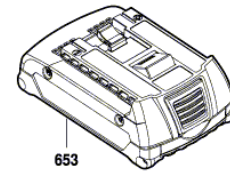
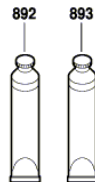
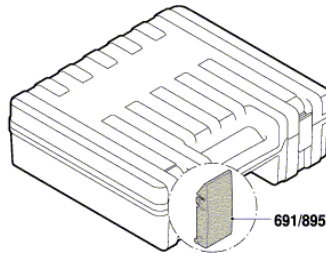
Illustration - Type - E

3 611 J11 180  
 Issue | 20-08-19  
 Stand | **Fig./Abb. 2**



Austrastmoment 28,0 - 8,0 Nm  
 Slipping point of clutch 28,0 - 8,0 Nm  
 Couple de glissement 28,0 - 8,0 Nm  
 Momento de desenclavamiento 28,0 - 8,0 Nm

Anzugsmomente  
 Torque values  
 Couple de serrage  
 Pares de apriete  
 Pos. 16 = 1,2 - 1,7 Nm  
 71 = 1,6 - 2,0 Nm  
 72 = 2,2 - 2,7 Nm  
 822/120 = 2,7 - 4,7 Nm



Modifications reserved  
 Änderungen vorbehalten  
 Modifications réservées  
 Salvo modificaciones