



BOSCH

Rotary Hammer

GBH 5 DCE | 0 611 230 743

Table of Content

| | |
|--------------------------|---|
| Spare parts list..... | 2 |
| Illustration - Type..... | 6 |

Spare parts list

| Item | Part Number | Description |
|------|---------------|---|
| 1 | 1 615 102 142 | Motor Housing BLUE |
| 2 | 1 604 220 343 | Field 220-230V |
| 4 | 1 617 200 048 | Switch |
| 4/10 | 2 910 011 088 | Socket head cap screw DIN 84-AM3,5x12-5.8 |
| 5 | 1 614 460 075 | Power supply cord CN 4,15m 2 x 1,0mm H07 RN-F |
| 6 | 1 610 703 053 | Grommet Ø9,7-Ø12x89 MM |
| 7 | 1 601 302 018 | Fastening Clamp |
| 9 | 1 611 110 765 | Manufacturer's nameplate |
| 13 | 1 610 900 025 | groove ball bearing 7x22x7 |
| 15 | 1 616 610 071 | Fan |
| 19 | 1 615 806 121 | Guide Tube |
| 20 | 1 618 597 071 | Toolholder |
| 21 | 1 610 508 017 | Protective Cap |
| 22 | 1 610 591 009 | Protection Sleeve |
| 23 | 1 610 520 001 | Stop Sleeve |
| 25 | 1 612 300 027 | Stopping Device |
| 26 | 1 610 290 025 | Indexing Disk |
| 27 | 1 610 222 008 | Retaining snap ring |
| 28 | 1 614 621 000 | Compression Spring |
| 29 | 1 614 616 008 | Compression Spring |
| 30 | 1 610 250 007 | Ball Race |
| 31 | 1 610 390 015 | Spacer Tube |
| 32 | 1 610 202 016 | Cylinder Sleeve |
| 34 | 1 610 102 622 | Supporting Disc 1,5 MM THICK |
| 35 | 1 615 806 089 | Hammer Pipe |
| 38 | 1 611 110 801 | Sticker |
| 38 | 1 611 110 802 | Sticker |
| 38 | 1 615 190 074 | Covering hood BLACK |
| 39 | 1 610 290 024 | Clutch Ring |
| 41 | 1 613 124 036 | Striker Pin |
| 46 | 1 611 015 036 | Sealing Frame |
| 47 | 1 610 591 012 | Cover |
| 51 | 1 616 333 023 | Crown Gear Z=37 |
| 53 | 1 610 190 023 | Stop Disc |

Spare parts list

| Item | Part Number | Description |
|------|---------------|--|
| 54 | 1 610 101 014 | Stop Disc |
| 57 | 1 618 710 053 | Striker |
| 72 | 1 616 337 004 | Eccentric Cog Wheel Z=35 |
| 75 | 1 615 132 045 | Handle BLACK |
| 80 | 1 607 233 5CV | Speed governor 220-240V |
| 81 | 1 612 026 043 | Switch-Pawl GRAY |
| 82 | 1 615 510 000 | Light Conductor |
| 94 | 1 610 119 007 | Spring retaining ring |
| 96 | 2 916 660 024 | Spring retaining ring 55x2MM, DIN 472 |
| 97 | 2 916 190 284 | Shim ring DIN 988-45x55 |
| 98 | 1 610 101 622 | Friction Washer 0,5 MM THICK |
| 99 | 1 610 190 030 | Holding Plate |
| 101 | 1 610 210 094 | O-Ring 20,0x3,0 MM |
| 102 | 1 610 210 095 | O-Ring 55,0x2,0 MM |
| 103 | 1 610 210 100 | O-Ring 27,0x1,5 MM |
| 104 | 1 610 210 093 | O-Ring 17,0x8,0 MM |
| 105 | 1 610 210 096 | O-Ring 21,0x3,5 MM |
| 107 | 1 610 210 116 | O-Ring 14,0x2,0 MM |
| 108 | 1 900 210 103 | O-Ring 8,0x1,5 MM |
| 109 | 1 610 283 028 | Rotary shaft lip seal DIN 3760-BS, Ø40x55x7 MM |
| 110 | 1 610 116 003 | Spring retaining ring |
| 111 | 1 610 210 081 | O-Ring 10,0x1,0 MM |
| 112 | 1 613 461 001 | Threaded Ring M24x1,5MM, SW10 |
| 113 | 1 610 501 036 | Bushing |
| 116 | 1 610 116 004 | Spring retaining ring |
| 117 | 1 610 119 008 | Spring retaining ring |
| 118 | 1 610 913 009 | Needle-Roller Assembly |
| 119 | 1 610 913 011 | Needle-Roller Assembly Ø10 MM |
| 121 | 1 610 905 014 | groove ball bearing |
| 122 | 1 610 913 029 | Needle-Roller Assembly |
| 124 | 1 610 101 008 | Thrust Bearing Disc 1,0 MM THICK |
| 125 | 2 912 401 036 | Tapping Screw DIN7981-ST4,8x25-C-Z |
| 126 | 2 910 211 019 | Tapping Screw DIN 7971-ST3,9x16-F |
| 127 | 2 912 311 166 | Oval-Head Screw DIN 7985-M5x30-8.8 |

Spare parts list

| Item | Part Number | Description | | |
|-------------|--------------------|--------------------------|----------------------|-------|
| 128 | 2 910 211 037 | Tapping Screw | DIN 7971-BZ4,8x32 | |
| 129 | 2 912 401 037 | Tapping Screw | DIN 7981-ST4,8x32C-Z | |
| 131 | 1 611 110 766 | Manufacturer's nameplate | | |
| 132 | 2 914 551 117 | Microencapsulated Screw | DIN 912-M 5x12-8.8 | |
| 136 | 2 910 211 236 | Tapping Screw | DIN 7971-ST4,8x25-C | |
| 139 | 1 610 005 002 | Felt Disc | Ø39x15 MM | |
| 148 | 1 610 102 627 | Shim | 0,2 MM | THICK |
| 148 | 1 610 102 633 | Shim | 0,3 MM | THICK |
| 149 | 1 612 388 021 | Adapting Piece | | |
| 151 | 2 600 210 028 | O-Ring | 21,0x2,0 MM | |
| 152 | 1 610 508 030 | Cover | | |
| 154 | 1 610 222 010 | Retaining snap ring | | |
| 180 | 1 611 110 855 | Sticker | | |
| 800 | 1 617 000 945 | Clamp Handle | BLACK | |
| 803 | 1 614 010 186 | Armature | 220-240V | |
| 808 | 1 601 11A 3H3 | Nameplate | | |
| 814 | 1 617 000 822 | groove ball bearing | | |
| 824 | 1 617 000 271 | Cylindrical Roller | | |
| 833 | 1 617 000 949 | Control Fork | | |
| 837 | 1 617 000 291 | Retaining Bracket | BLACK | |
| 840 | 1 617 000 811 | Impact Mechanism Housing | | |
| 842 | 1 614 336 009 | Brush Holder | | |
| 842/020 | 1 614 336 043 | Brush Guide | | |
| 842/040 | 1 617 014 122 | Carbon-Brush Set | | |
| 842/050 | 1 613 212 004 | Rubber Buffer | | |
| 842/080 | 2 912 401 005 | Tapping Screw | DIN7981-ST2,9x9,5C-Z | |
| 843 | 1 615 808 078 | Bearing cover | BLUE | |
| 845 | 1 617 000 823 | Gear Housing | | |
| 848 | 1 617 000 415 | Clutch Sleeve | | |
| 856 | 1 617 000 999 | Hammer Piston | | |
| 860 | 1 617 000 817 | Spur Wheel Clutch | | |
| 897 | 1 617 000 272 | Wear and Tear Part Set | | |
| 898 | 1 617 000 273 | Wear and Tear Part Set | | |
| 899 | 1 617 000 293 | Holding Plate | | |

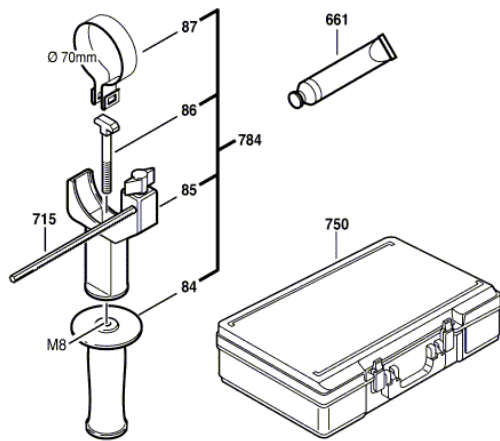
Spare parts list

| Item | Part Number | Description | |
|------|---------------|------------------|-------------|
| 84 | 1 602 025 07H | Auxiliary Handle | |
| 85 | 1 618 040 055 | Support clamp | Ø70 MM |
| 86 | 1 613 490 001 | T-Head Bolt | M8x80 MM |
| 87 | 1 611 316 008 | Clamping Band | Ø70 MM |
| 661 | 1 615 430 010 | Grease Tube | 30 ML |
| 715 | 1 613 001 003 | Depth-Gauge | SW 6x330 MM |
| 750 | 2 605 438 261 | Carrying Case | |
| 784 | 2 602 025 062 | Auxiliary Handle | Ø 70 MM, M8 |

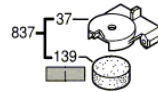
Illustration - Type - E

0 611 230 703; 743
Issue | 01-07-17
Stand |

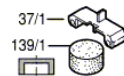
Fig./Abb. 2



Neue Ausführung
New execution
Nouvelle exécution
Nueva ejecución

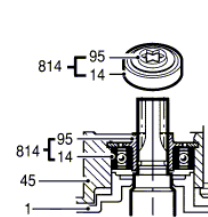


Alte Ausführung
Old execution
Ancien exécution
Vieja ejecución

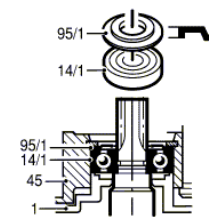


Änderungen vorbehalten
Modifications reserved
Modifications réservées
Salvo modificaciones

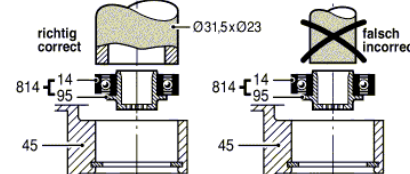
Neue Ausführung
New execution
Nouvelle exécution
Nueva ejecución



Alte Ausführung
Old execution
Ancien exécution
Vieja ejecución



Beachten: Einbau Pos. 814 mit Hilfswerkzeug!
Attention: Assembly pos. 814 using auxiliary tool!



Vor Ankerdemontage- und Montage beide Bürstenhalter 5-7 mm nach außen ziehen.
For armature disassembly and assembly pull the brush holder 5-7 mm outwards.

Nach der Ankerdemontage Bürstenhalter nach innen drücken und festschrauben.
After armature assembly, press in the brush holder and tighten the screw.

Kohlebürsten mit Flachstecker einsetzen.
Fit brushes and electrical contact.

Litzen beider Kohlebürsten um 180° drehen.
Turn both the Brush wires 180° as shown.

Abstand herstellen (min. 1mm) zwischen Flachstecker und Kohlebürstenhalter.
In order to fit pos. 47 there must be at least 1 mm distance between the brush holder and the electrical contact. Press pos. 47 firmly into position.

