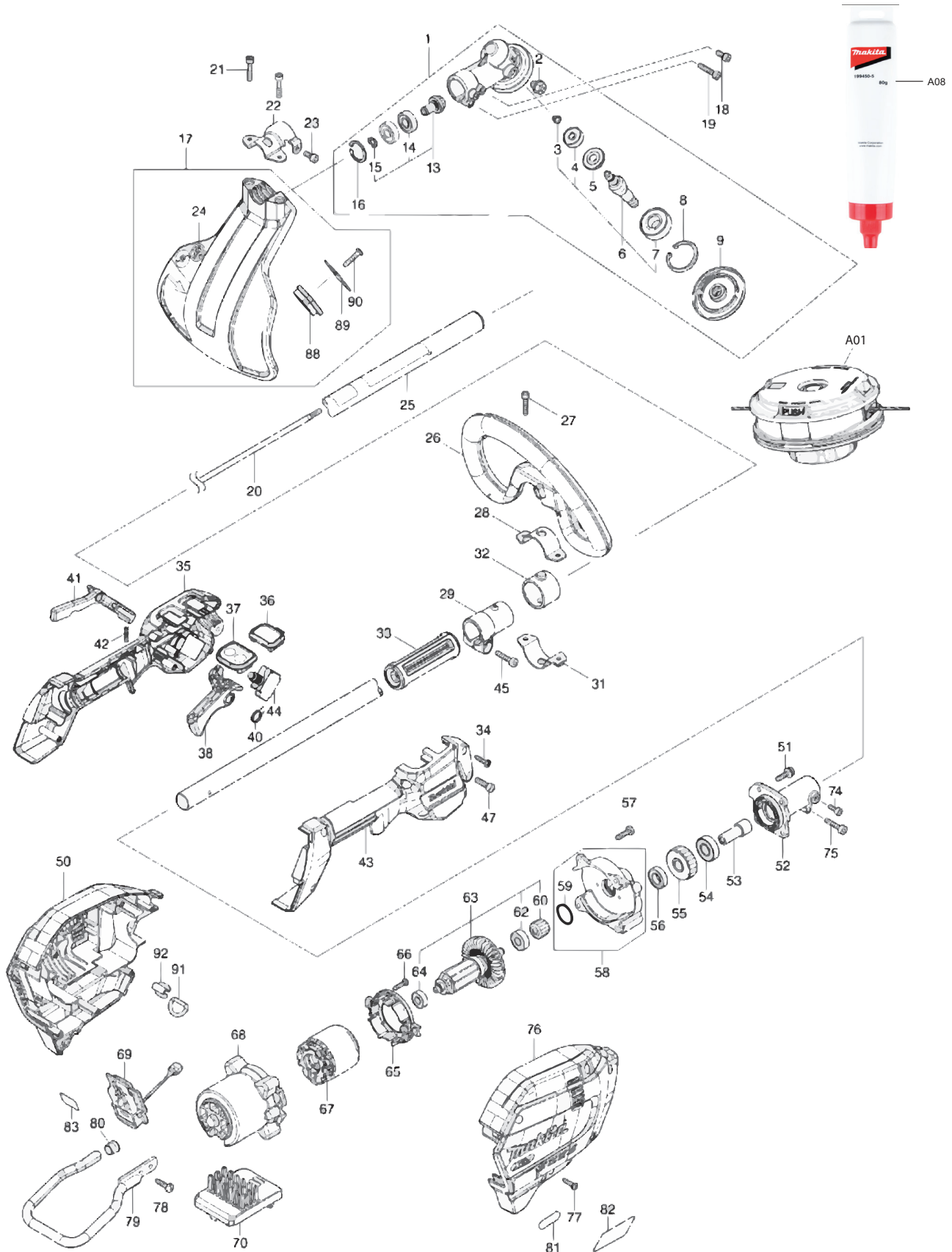




**GRU04**



Products with multiple versions are listed in subsiding order with the newest version on top not indented.

Section	Fig. No.	Part No.	Description	GRU04	Tech Bulletin	Notes
1	1	127380-0	GEAR CASE ASSEMBLY US	1		INC. 2,6,8,9,13,16
1	2	265590-2	+HEX.BOLT M8X10 WITH R	1		
1	3	259070-8	RETAINING RING (EXT) S-7	1		
1	4	210030-5	BALL BEARING 627ZZ	1		
1	5	226954-5	SPIRAL BEVEL GEAR 21	1		
1	6	136234-0	CUTTER SHAFT ASS'Y	1		INC 3-5,7
1	7	211228-7	BALL BEARING 6202DDW	1		
1	8	259069-3	RETAINING RING (INT) R-35	1		
1	9	140N88-3	RECEIVE WASHER COMPLETE	1		
1	13	136236-6	SPIRAL BEVEL GEAR ASS'Y	1		INC. 14,15
1	14	210051-7	BALL BEARING 609ZZ	2		
1	14	210049-4	BALL BEARING 609ZZ	2		
1	15	259071-6	RETAINING RING (EXT) S-9	1		
1	16	259072-4	RETAINING RING (INT)R-24	1		
1	17	191B55-9	PROTECTOR N 430 SET MG	1		INC. 24,88-90
1	18	922216-6	HEX. SOCKET HEAD BOLT M5X14	1		
1	19	922242-5	HEX. SOCKET HEAD BOLT M5X25	1		
1	20	327056-1	SHAFT	1		
1	21	251513-6	H.S.H.BOLT M5X25	2		
1	22	347107-4	PROTECTOR CLAMP 24	1		
1	23	922216-6	HEX. SOCKET HEAD BOLT M5X14	1		
1	24	457273-0	PROTECTOR N 420-450	1		
1	25	140P07-1	SHAFT PIPE COMPLETE E	1		
1	26	457267-5	LOOP HANDLE	1		
1		263005-3	RUBBER PIN 6	1		INC WITH FIG 26/NOT PICTURED
1	27	922234-4	H.S.H.BOLT M5X20 WITH WG	2		
1	28	347113-9	UPPER CLAMP 35	1		
1	29	457269-1	PIPE HOLDER 24	1		
1	31	347114-7	LOWER CLAMP 35	1		
1	32	424942-8	DAMPER	1		
1	33	451601-1	SPACER 24	1		
1	34	266326-2	TAPPING SCREW 4X18	6		
1	35	183S36-9	GRIP SET	1		INC. 43

Products with multiple versions are listed in subsiding order with the newest version on top not indented.

Section	Fig. No.	Part No.	Description	GRU04	Tech Bulletin	Notes
1	36	141D25-0	INDICATION CIRCUIT COMPLETE E	1		
1	37	140W06-5	SWITCH CIRCUIT COMPLETE G	1		
1		819J26-9	SWITCH LABEL	1		INC WITH FIG 37/NOT PICTURED
1	38	459758-2	SWITCH LEVER	1		
1	40	233622-3	TORSION SPRING 12	1		
1	41	459759-0	LOCK OFF LEVER	1		
1	42	233101-1	COMPRESSION SPRING 4	1		
1	43	183S36-9	GRIP SET	1		INC. 35
1	44	651492-2	SWITCH C3JR-1A-PAXD3	1		
1	45	922244-1	H.S.H.BOLT M5X25 WITH WG	1		
1	47	922233-6	H.S.H.BOLT M5X20 WITH WR	1		
1	50	183R88-4	HOUSING SET	1		INC. 76
1		263005-3	RUBBER PIN 6	2		INC WITH FIG 50/NOT PICTURED
1	51	911233-1	PAN HEAD SCREW M5X20	4		
1	52	140Y38-4	PIPE BRACKET COMPLETE	1		
1		263002-9	RUBBER PIN 4	1		INC WITH FIG 52
1	53	325811-5	SPINDLE HUB	1		
1	54	211131-2	BALL BEARING 6001DDW	1		
1	55	227848-7	HELICAL GEAR 33	1		
1	56	211140-1	BALL BEARING 6901ZZ	1		
1	56	211150-8	BALL BEARING 6901ZZ	1		
1	57	266420-0	TAPPING SCREW 5X20	4		
1	58	136368-9	GEAR BOX ASSY	1		INC. 59
1	59	213961-7	O RING 22	1		
1	60	227834-8	HELICAL GEAR 16	1		
1	62	210005-4	BALL BEARING 608DDW	1		
1	63	519647-4	ROTOR ASS'Y	1		INC. 60,62,64
1	64	211021-9	BALL BEARING 607LLB	1		
1	64	210062-2	BALL BEARING 607ZZ	1		
1	65	459764-7	BAFFLE PLATE	1		
1	66	266326-2	TAPPING SCREW 4X18	2		
1	67	629A25-7	STATOR	1		
1	68	412961-6	MOTOR HOUSING	1		
1	69	632P49-4	TERMINAL UNIT	1		

Products with multiple versions are listed in subsiding order with the newest version on top not indented.

Section	Fig. No.	Part No.	Description	GRU04	Tech Bulletin	Notes
1	70	620F29-2	CONTROLLER	1		
1	74	922211-6	H.S.H.BOLT M5X12 WITH W	1		
1	75	922233-6	H.S.H.BOLT M5X20 WITH WR	1		
1	76	183R88-4	HOUSING SET	1		INC. 50
1		263005-3	RUBBER PIN 6	2		INC WITH FIG 76/NOT PICTURED
1	77	266326-2	TAPPING SCREW 4X18	6		
1	78	266420-0	TAPPING SCREW 5X20	2		
1	79	347752-5	BATTERY GUARD	1		
1	80	422230-7	CAP	1		
1	88	459765-5	CUTTER EXTENSION	1		
1	89	347115-5	CUTTER	1		
1	90	266459-3	TAPPING SCREW 5X25	1		
1	91	327742-4	D RING 20	1		
1	92	347783-4	RING SUPPORT	1		
1	A01	191R00-0	TRIMMER HEAD	1		
1	A03	783202-0	HEX. WRENCH 4	1		NOT PICTURED
1	A05	127759-5	BAND ASSEMBLY L	1		NOT PICTURED
1	A08	199450-5	STRING TRIMMER GEAR GREASE	1		