

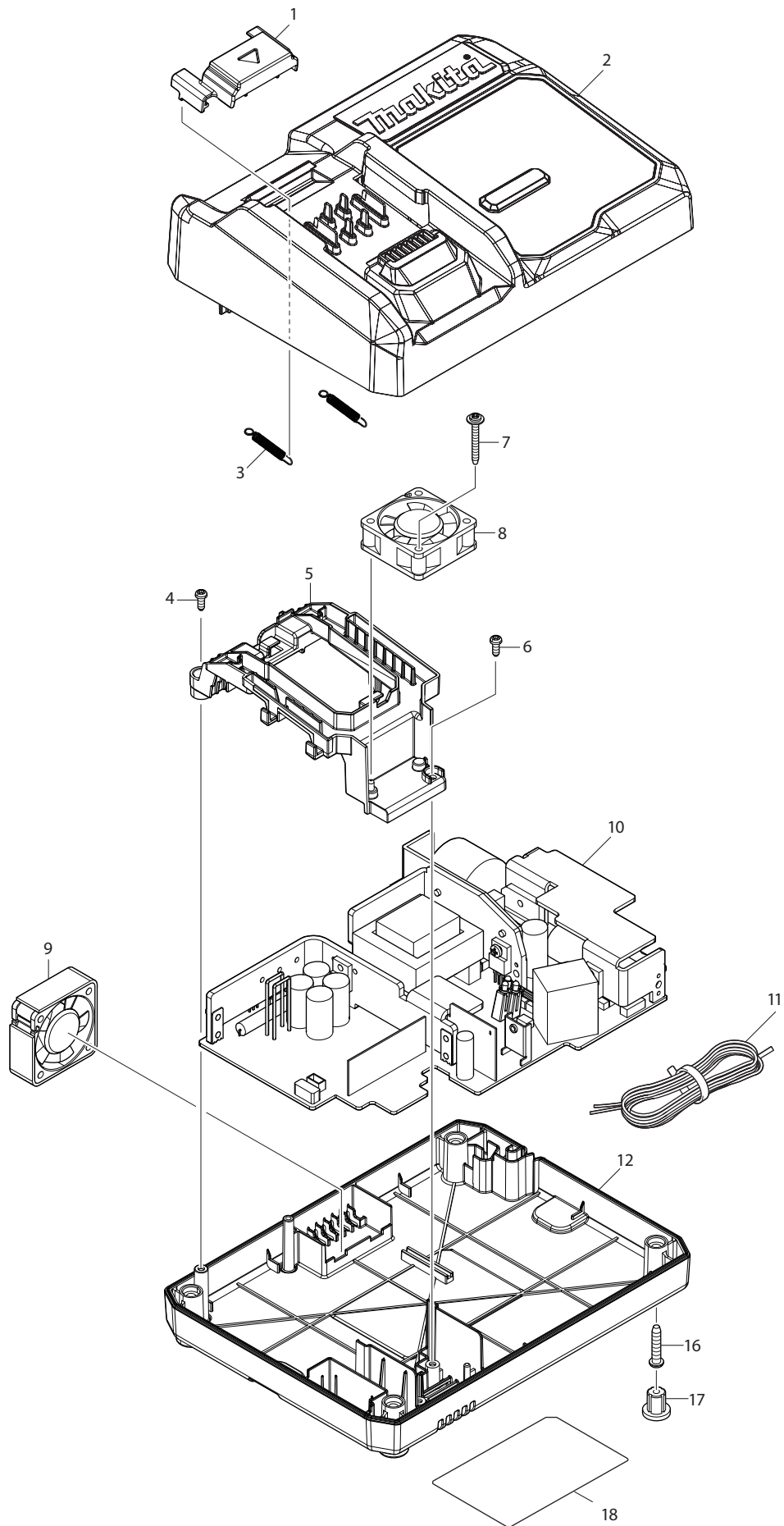
## Model GSH01Z Parts List

A = Standard Equipment

O = Circuit Diagram

Item#	Part#	Description	Q'ty	Unit
1	266326-2	TAPPING SCREW 4X18	6	PC.
2	183R18-5	HANDLE SET	1	PC.
	C10 263005-3	RUBBER PIN 6	1	PC.
	C20 8012U5-0	CAUTION LABEL	1	
	D10	INC. 11		
3	140F99-0	CAP COMPLETE	1	PC.
	C10 213218-6	O RING 16	1	PC.
	C20 818H07-8	CAP LABEL	1	PC.
4	231433-0	COMPRESSION SPRING 4	1	PC.
5	419704-7	LOCK OFF BUTTON	1	PC.
6	458594-3	SWITCH LEVER	1	PC.
7	231433-0	COMPRESSION SPRING 4	1	PC.
8	651083-9	SWITCH C3XA-1PSPM	1	PC.
9	632M92-5	SWITCH UNIT	1	PC.
10	911243-8	PAN HEAD SCREW M5X25	3	PC.
11	183R18-5	HANDLE SET	1	PC.
	C10 263005-3	RUBBER PIN 6	1	PC.
	C20 8012U5-0	CAUTION LABEL	1	
	D10	INC. 2		
12	857E32-6	GSH01 NAME PLATE	1	
13	8012U4-2	XGT LOGO LABEL	1	
14	632P65-6	TERMINAL UNIT	1	PC.
15	857E37-6	GSH01 SERIAL NO. LABEL	1	
16	140S46-9	TERMINAL HOUSING COMPLETE	1	
	C10 263005-3	RUBBER PIN 6	1	PC.
17	266326-2	TAPPING SCREW 4X18	2	PC.
18	412480-2	SPACER	1	
19	620D01-2	CONTROLLER	1	
20	911258-5	PAN HEAD SCREW M5X35	4	PC.
21	140U69-9	MOTOR HOUSING COMPLETE	1	
	C10 8012U6-8	CAUTION LABEL	1	
22	458750-5	FRONT GRIP	1	PC.
23	266326-2	TAPPING SCREW 4X18	1	PC.
24	620936-3	LED CIRCUIT	1	PC.
25	458751-3	LIGHT COVER	1	PC.
26	266326-2	TAPPING SCREW 4X18	1	PC.
27	629479-2	STATOR	1	
28	266326-2	TAPPING SCREW 4X18	2	PC.
29	458749-0	BAFFLE PLATE	1	PC.
30	210022-4	BALL BEARING 626DDW	1	PC.
31	519534-7	ROTOR ASSY	1	PC.
	D10	INC. 30,32		
32	210059-1	BALL BEARING 6000DDW	1	PC.
33	251529-1	PAN HEAD SCREW M4X14	1	PC.
34	347676-5	SHAFT LOCK	1	
35	233084-5	COMPRESSION SPRING 6	1	PC.
36	286039-9	CAP	1	PC.
37	140S41-9	BLADE CASE COMPLETE	1	
	C10 213434-0	O RING 26	1	PC.
	C20 263005-3	RUBBER PIN 6	1	PC.
	C30 818C47-6	SCALE LABEL	1	PC.

38	266396-1	FLATHEAD SQUARENECKBOLT M8X24	1 PC.
39	262185-2	RUBBER SLEEVE8	1 PC.
40	251572-0	COUNTERSUNK HEAD SCREW M6X30	1 PC.
41	211031-6	BALL BEARING 608ZZ	1 PC.
42	961057-5	RETAINING RING S-17	1 PC.
43	226838-7	HELICAL GEAR 37	1 PC.
44	257451-0	RING 17	1 PC.
45	285809-3	BEARING RETAINER 23-36	1 PC.
46	210301-0	BALL BEARING 6003DDW	1 PC.
47	327192-3	SPINDLE	1 PC.
48	213565-5	O RING 42	1 PC.
49	136021-7	BEARING BOX ASSY	1 PC.
	D10	INC. 48	
50	265034-2	COUNTERSUNK HEAD SCREW M5X16	2 PC.
51	232467-6	TENSION SPRING 4	1 PC.
52	319970-5	SAFETY COVER	1
53	271448-5	LEVER 37	1 PC.
54	265178-8	PAN HEAD SCREW M4X16	1 PC.
55	267337-0	FLAT WASHER 40	1 PC.
56	257452-8	RETAINING RING (EXT) WR-40	1 PC.
57	224594-3	INNER FLANGE 35	1 PC.
58	224409-4	OUTER FLANGE 35	1 PC.
59	266283-4	HEX. SOCKET HEX. BOLT M8X20	1 PC.
60	257953-6	BOW STOP RING E-12	1 PC.
61	271460-5	LEVER 90	1
62	252262-8	COLLERED HEX. NUT M8	1 PC.
63	265075-8	PAN HEAD SCREW M5	1 PC.
64	252103-8	HEX. LOCK NUT M5-8	1 PC.
65	136273-0	BASE ASSY	1
	D10	INC. 66-85	
66	347439-9	DEPTH GUIDE	1 PC.
67	256511-5	SHOULDER PIN 6-7	1 PC.
68	266227-4	CAP SQUARE NECK BOLT M8X28	1 PC.
69	347440-4	ANGULAR GUIDE	1 PC.
70	256511-5	SHOULDER PIN 6-7	1 PC.
71	265701-9	THUMB SCREW M6X14	1 PC.
72	233376-2	COMPRESSION SPRING 8	1 PC.
73	319971-3	BASE	1
74	347442-0	SCALE PLATE	1 PC.
75	251358-2	PAN HEAD SCREW M4X8	2 PC.
76	266229-0	H.S.SET SCREW(CUP POINT)M5X8	3 PC.
77	233314-4	COMPRESSION SPRING 4	1 PC.
78	216008-6	STEEL BALL 4	1 PC.
79	253811-4	FLAT WASHER 5	1 PC.
80	450704-8	DIAL 27	1 PC.
81	251370-2	PAN HEAD SCREW #REF!	1 PC.
82	941201-0	FLAT WASHER 8	1 PC.
83	346003-3	LEVER PLATE	1 PC.
84	264006-4	HEX. NUT M8-13	1 PC.
85	257953-6	BOW STOP RING E-12	1 PC.
A01	196520-1	DUST NOZZLE SET	1 PC.
A02	B-61656	TCT BLADE185X24T WOOD	1 PC.
A03	783204-6	HEX. WRENCH 6	1 PC.



## Model DC40RA Parts List

A = Standard Equipment

O = Circuit Diagram

Item#	Part#	Description	Q'ty	Unit
001	459475-4	TERMINAL COVER	1	PC.
002	140N46-9	CHARGER CASE COMPLETE	1	PC.
	C10 459476-2	LENS	1	PC.
	C20 819V01-7	CHARGING CONDITION LABEL	1	PC.
003	232565-6	TENSION SPRING 4	2	PC.
004	265B02-7	TAPPING SCREW 3X8	1	PC.
005	459474-6	TERMINAL BASE	1	PC.
006	265B02-7	TAPPING SCREW 3X8	1	PC.
007	265A61-5	TAPPING SCREW FLANGE 3X25	1	PC.
008	632P24-0	FAN 40	1	PC.
009	632P25-8	FAN 40	1	PC.
010	620B41-8	CHARGING CIRCUIT	1	PC.
010	C11 647075-4	VARISTOR	1	PC.
	C20 652089-0	FUSE	1	PC.
011	667982-5	VINYL CORD #18-2-2.0	1	PC.
012	459846-5	CHARGER CASE COVER	1	PC.
016	265B01-9	TAPPING SCREW PT 4X20	4	PC.
017	286255-3	CAP 13	4	PC.
018	857F48-7	DC40RA NAME PLATE	1	PC.
E01	819V02-5	CAUTION LABEL	1	PC.