



**BOSCH**

# Angle Grinder

GWS 7-100 T | 3 601 C88 685

---

## Table of Content

|                          |   |
|--------------------------|---|
| Spare parts list.....    | 2 |
| Illustration - Type..... | 4 |

**Spare parts list**

| Item  | Part Number   | Description                                       |
|-------|---------------|---|
| 1     | 1 619 P09 415 | Motor Housing                                     |
| 3     | 1 604 010 BK7 | Armature  |
| 3/40  | 1 619 P02 801 | Fan   |
| 4     | 1 607 200 179 | On-Off Switch                                     |
| 5     | 1 604 460 263 | Power supply cord H05 W-F CN 2,65m 2 x 0,75mm     |
| 6     | 2 600 703 012 | Grommet Ø6,5-Ø6,9x95 MM                           |
| 7     | 1 601 302 017 | Fastening Clamp                                   |
| 9     | 1 619 P02 882 | Manufacturer's nameplate GWS 7-100 T              |
| 12    | 1 619 P15 039 | Suppression Filter                                |
| 13    | 1 619 P00 456 | Ball Bearing 7x19x6 MM                            |
| 14    | 1 619 P00 455 | Ball Bearing                                      |
| 16    | 1 619 P02 845 | Brush Holder                                      |
| 16/21 | 1 619 P02 809 | Spiral Spring                                     |
| 18    | 1 604 611 031 | Compression Spring                                |
| 22    | 1 619 P02 811 | Adjusting Slide                                   |
| 23    | 1 619 P10 838 | Switch Button                                     |
| 24    | 1 619 P02 828 | Brush-Cover                                       |
| 25    | 1 619 P10 071 | Housing Cover                                     |
| 26    | 1 619 P14 330 | Intermediate Ring                                 |
| 27    | 1 600 206 025 | Rubber Ring                                       |
| 28/1  | 1 619 P17 021 | Ball Bearing                                      |
| 28/3  | 2 916 660 013 | Retaining clip DIN 472-32x1,2 MM                  |
| 29    | 1 619 P02 818 | Air-Deflector Ring                                |
| 30    | 1 619 P02 819 | Air Distributor                                   |
| 32    | 1 619 P20 124 | Grinding Spindle                                  |
| 33    | 1 619 P02 820 | O-Ring 44,0x1,0 MM                                |
| 35    | 1 619 P02 821 | Shim 0,1 MM                                       |
| 35    | 1 619 P02 822 | Shim 0,2 MM                                       |
| 36    | 1 619 P00 987 | Washer  |
| 37    | 1 600 100 033 | Cover Disc  |
| 45    | 2 915 011 007 | Hex Nut DIN 934-M6-8-A                            |
| 47    | 2 609 110 052 | Special Screw                                     |
| 48    | 1 619 P02 849 | Torx Oval-Head Screw 3x8                          |
| 49    | 1 603 435 068 | Thread-forming tap. Screw M4x10, SR10.2 DIN 7500, |

Spare parts list

| Item   | Part Number   | Description            |                      |        |
|--------|---------------|------------------------|----------------------|--------|
| 50     | 1 619 P00 105 | Torx Oval-Head Screw   | 4x20                 |        |
| 55     | 1 619 P01 066 | Torx Oval-Head Screw   | 4x25                 |        |
| 57     | 1 619 P02 848 | Torx Oval-Head Screw   | 4x12                 |        |
| 80     | 1 619 P09 390 | Cover Disc             |                      |        |
| 802    | 1 619 P07 239 | Field                  | 220-230V             |        |
| 808    | 1 619 P20 580 | Nameplate              |                      |        |
| 810    | 1 619 P02 870 | Carbon-Brush Set       |                      |        |
| 828    | 1 619 P07 451 | Bearing Flange         |                      |        |
| 831    | 1 619 P07 276 | Gear Housing           |                      |        |
| 838    | 1 619 P13 518 | Set Of Gears           |                      |        |
| 840    | 1 619 P02 873 | Push-Button            |                      |        |
| 841    | 1 600 910 018 | Needle bearing         | Ø8xØ12x8 MM          |        |
| 858    | 2 910 641 081 | Oval-Head Screw        | DIN7985-M3,5x5-4.8-H |        |
| 650/10 | 1 602 025 09T | Auxiliary Handle       |                      |        |
| 650/20 | 1 619 P09 976 | Round Nut With 2 Holes |                      |        |
| 650/30 | 2 609 110 015 | Pin-Type Face-Wrench   |                      |        |
| 650/50 | 1 605 703 113 | Clamping-Flange        | M10, 16-20 MM        |        |
| 651    | 1 600 A00 XU5 | Protective Cover       | Ø100 MM              | SILVER |
| 894    | 1 615 430 020 | Grease Tube            | 225 ML               |        |
| 895    | 1 605 430 003 | Grease Tube            | 225 ML               |        |

Illustration - Type - E

3 601 C88 685  
Stand } 19-09-23  
Issue }

Fig./Abb. 1

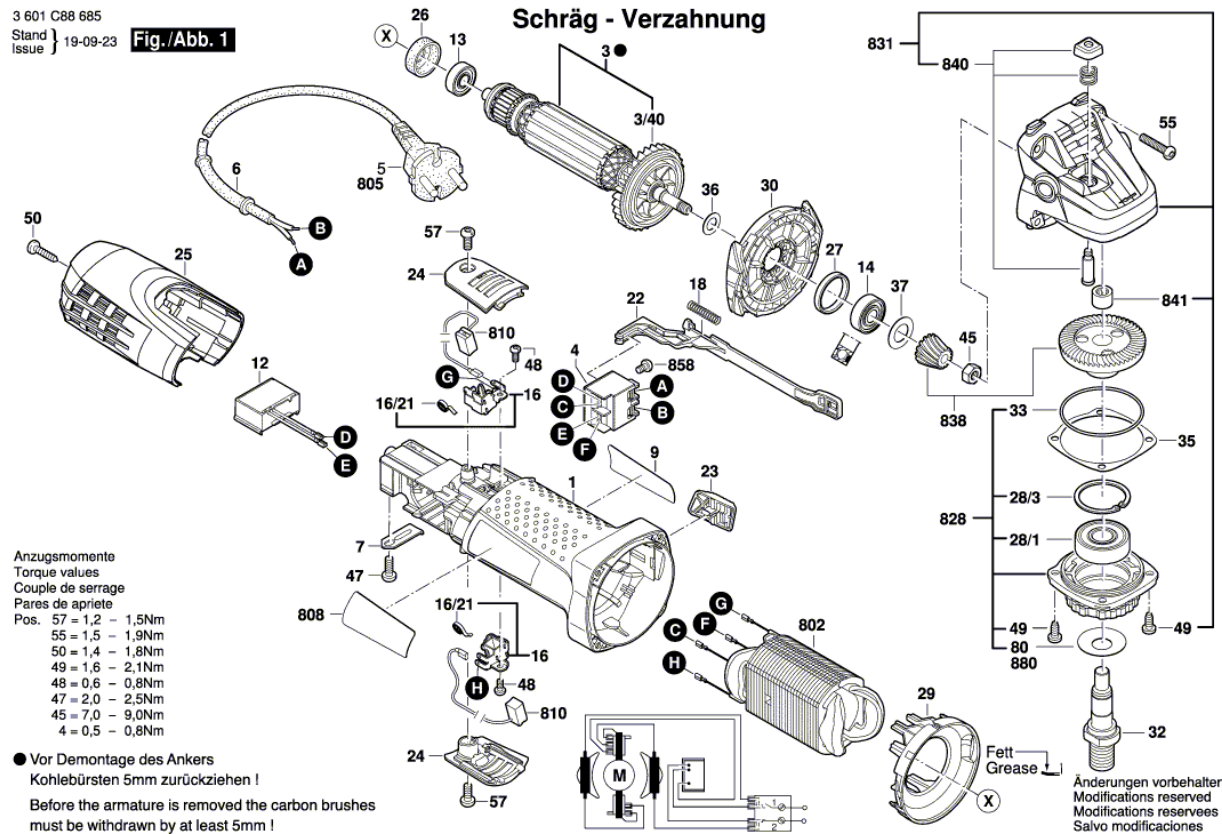
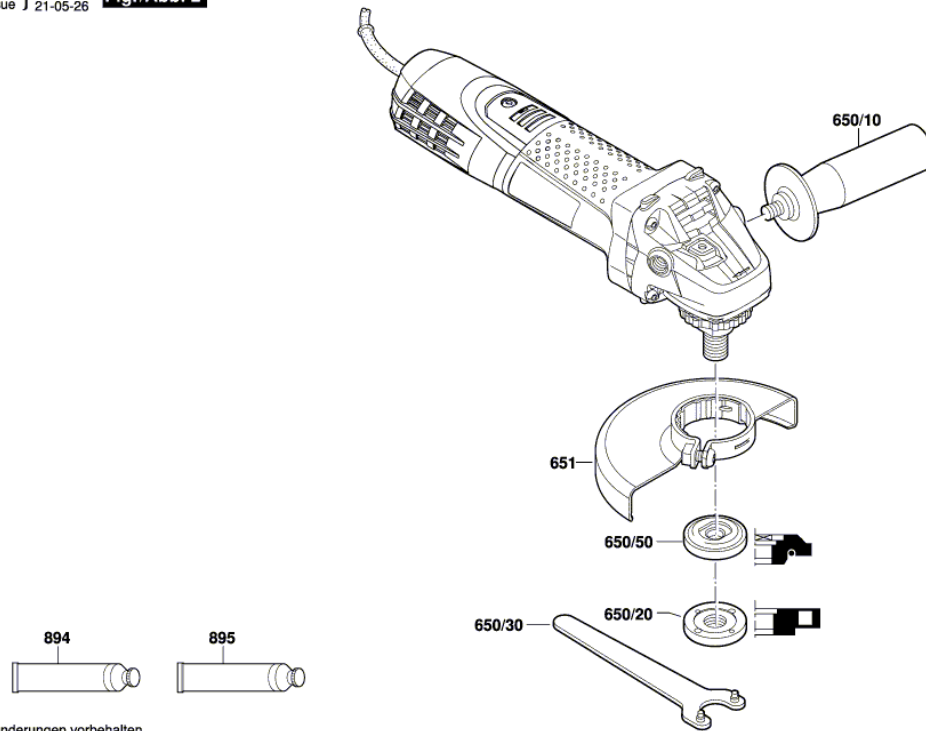


Illustration - Type - E

3 601 C88 685  
Stand | 19-09  
Issue | 21-05-26 **Fig./Abb. 2**



Änderungen vorbehalten  
Modifications reserved  
Modificaciones reserves  
Salvo modificaciones