

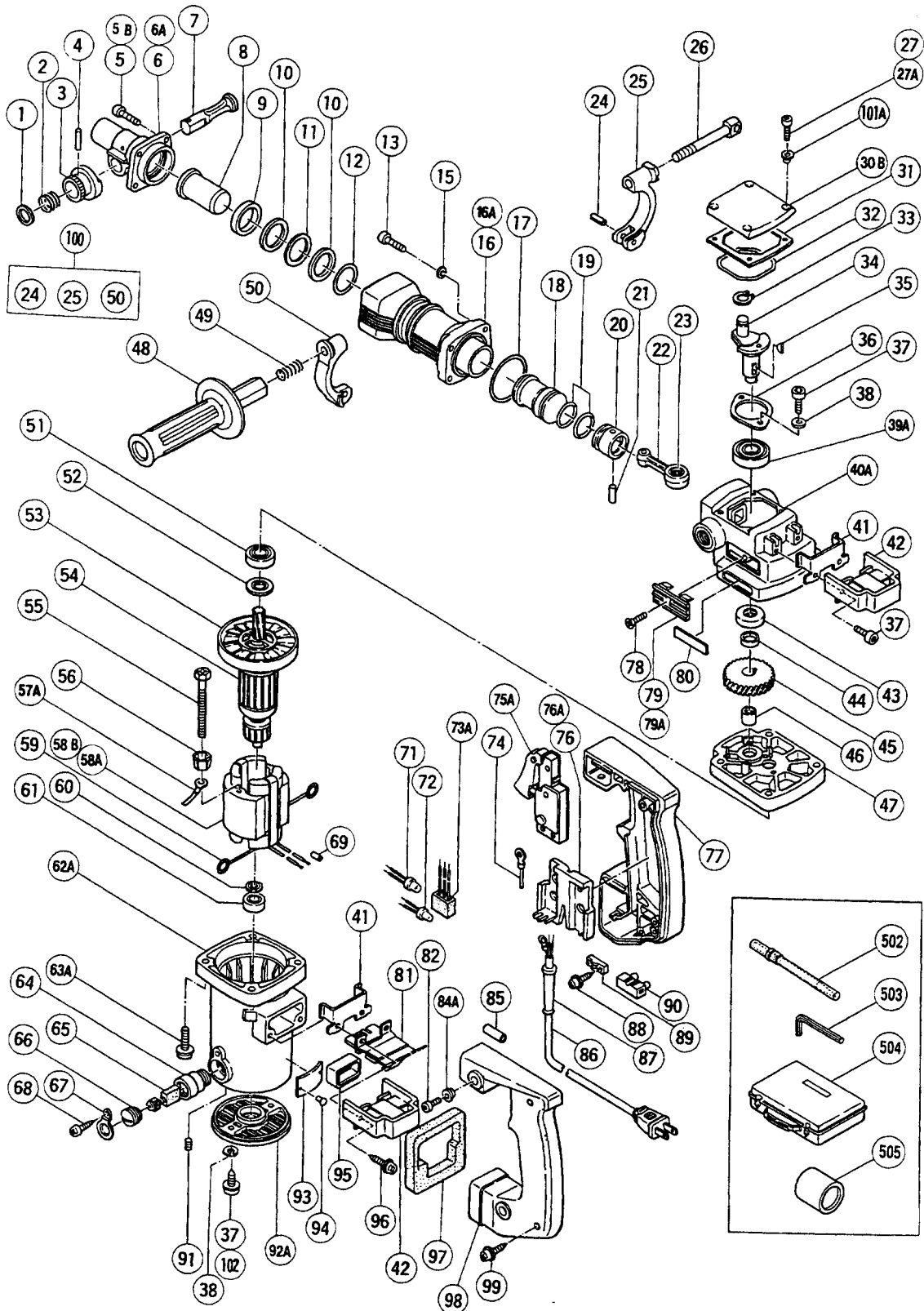
HITACHI

LIST NO. 0471

ELECTRIC TOOL PARTS LIST

■ HAMMER
Model H 45SB

1996 • 5 • 20
(E4)



PARTS

H 45SB

ITEM NO.	CODE NO.	DESCRIPTION	NO. USED	REMARKS
1	983-277	STOP WASHER	1	
2	981-937	STOPPER SPRING	1	
3	983-241	KNOB (A)	1	
4	943-384	NEEDLE ROLLER D4X20	1	
5	981-942	SEAL LOCK HEX. SOCKET HD. BOLT M8X25	4	TILL 12.1984
5B	993-040	NYLOCK HIGH TENSION BOLT M7X25	4	SINCE 1.1985
6	987-706	FRONT COVER	1	TILL 12.1984
6A	987-711	FRONT COVER	1	SINCE 1.1985
7	985-372	STOP LEVER	1	
8	987-705	SECOND HAMMER	1	
9	987-704	DAMPER WASHER	1	
10	987-702	DAMPER	2	
11	987-703	WASHER	1	
12	987-701	O - RING	1	
13	987-707	SEAL LOCK HEX. SOCKET HD. BOLT M6X25	1	
15	949-432	BOLT WASHER M6 (10 PCS.)	4	
16	987-700	CYLINDER CASE	1	TILL 12.1984
16A	987-710	CYLINDER CASE	1	SINCE 1.1985
17	980-715	O - RING (S - 48)	1	
18	983-231	STRIKER	1	
19	986-104	O - RING	2	
20	981-885	PISTON	1	
21	980-708	PISTON PIN	1	
22	980-707	CONNECTING ROD ASS'Y	1	INCLUD.23
23	980-756	NEEDLE BEARING (NSK AJ50 1203)	1	
24	949-875	ROLL PIN D6X22 (10 PCS.)	1	
25	980-658	HANDLE HOLDER (A)	1	
26	971-785	HANDLE BOLT	1	
27	949-217	MACHINE SCREW M4X12 (10 PCS.)	4	TILL 12.1983
27A	983-162	SEAL LOCK HEX. SOCKET HD. BOLT M4X12	4	SINCE 1.1984
30B	991-716	CRANK COVER	1	
31	980-749	SEAL PACKING	1	
32	980-744	O - RING (S - 55)	1	
33	939-542	RETAINING RING FOR D12 SHAFT (10 PCS.)	1	
34	981-993Z	CRANK SHAFT	1	
35	932-815	WOODRUFF KEY 3X13	1	
36	981-847	BEARING COVER	1	
37	984-509	SEAL LOCK HEX. SOCKET HD. BOLT M5X14	6	TILL 9.1987 FOR BEARING COVER,HANDLE RUBBER,TAIL COVER
37	984-509	SEAL LOCK HEX. SOCKET HD. BOLT M5X14	4	SINCE 10.1987 FOR BEARING COVER,HANDLE RUBBER
38	949-454	SPRING WASHER M5 (10 PCS.)	2	TILL 9.1987
39A	620-3DD	BALL BEARING 6203DDUCMAV2S	1	
40A	983-287	CRANK CASE ASS'Y	1	INCLUD.79A
41	980-750	GUIDE PLATE	2	
42	980-727	HANDLE RUBBER	2	
43	971-745	OIL SEAL (A)	1	
44	980-706	COLLAR	1	
45	981-995Z	FIRST GEAR	1	
46	946-408	NEEDLE BEARING (NTN BK1210)	1	
47	981-991Z	GEAR COVER	1	

*: ALTERNATIVE PARTS

PARTS

H 45SB

ITEM NO.	CODE NO.	DESCRIPTION	NO. USED	REMARKS	
48	981-870	SIDE HANDLE	1		
49	672-612	SPRING	1		
50	980-659	HANDLE HOLDER (B)	1		
51	620-2VV	BALL BEARING 6202VVCMP2S	1		
52	980-700	DUST WASHER (B)	1		
53	980-740	FAN	1		
*	54	981-971U	ARMATURE ASS'Y 110V - 115V	1	INCLUD.51 - 53,60,61
*	54	981-971E	ARMATURE ASS'Y 220V - 230V	1	INCLUD.53
*	54	981-971F	ARMATURE ASS'Y 240V	1	INCLUD.53
	55	960-251	HEX. HD. TAPPING SCREW D5X65	2	
	56	956-764	SPECIAL WASHER	2	
*	57A	986-277	INTERNAL WIRE	1	FOR NZL
*	58A	340-147C	STATOR ASS'Y 110V - 115V	1	INCLUD.59,69
*	58B	340-147G	STATOR ASS'Y 220V - 230V	1	INCLUD.59,69
*	58B	340-147H	STATOR ASS'Y 240V	1	INCLUD.59,69
	59	930-703	BRUSH TERMINAL	2	
	60	980-698	DUST WASHER (A)	1	
	61	608-VVM	BALL BEARING 608VVMC2EPS2L	1	
	62A	983-286	HOUSING ASS'Y (B)	1	INCLUD.64,91,102
	63A	982-411	HEX. SOCKET HD. BOLT (W/FLANGE) M6X50	4	
	64	981-586	BRUSH HOLDER	2	
	65	981-612Z	CARBON BRUSH (AUTO STOP TYPE) (1 PAIR)	2	
	66	961-781	BRUSH CAP	2	
	67	981-959	CAP COVER	2	
	68	958-715	TAPPING SCREW D4X10	2	
*	69	981-373	TUBE (D)	2	FOR AUS
*	71	959-141	CONNECTOR 50092 (10 PCS.)	2	FOR NZL
*	72	959-140	CONNECTOR 50091 (10 PCS.)	1	FOR NZL,CAN
*	73A	971-828	NOISE SUPPRESSOR	1	FOR NZL
*	74	983-276Z	INTERNAL WIRE	1	FOR NZL
*	75A	992-891	SWITCH (A) (1P SCREW TYPE) W/O LOCK	1	FOR NZL,USA,CAN
*	75A	981-533Z	SWITCH (2P PILLAR TYPE) W/O LOCK	1	FOR AUS
*	76	981-869	SUPPORT	1	TILL 3.1987 FOR NZL,USA,CAN
*	76	981-986Z	SUPPORT (A)	1	FOR AUS
*	76A	990-082	SUPPORT (E)	1	SINCE 4.1987 FOR NZL,USA,CAN
	77	983-272	HANDLE (A)	1	
	78	949-322	FLAT HD. SCREW M4X10 (10 PCS.)	2	TILL 7.1987
	79	980-735	WIND GUIDE	2	TILL 7.1987
	79A	991-713	WIND GUIDE (B)	2	SINCE 8.1987
	80	957-581	HITACHI LABEL	1	
	81	985-469	INTERNAL WIRE HOLDER	1	
	82	949-765	HEX. SOCKET HD. BOLT M5X12 (10 PCS.)	4	
	84A	991-711	DISTANCE PIECE (B)	4	
	85		VINYL TUBE (I.D.9X10.5X25)	1	
*	86	500-248Z	CORD	1	(CORD ARMOR D10.7) FOR USA,CAN
*	86	500-227Z	CORD	1	(CORD ARMOR D10.7) FOR NZL
*	86	500-408Z	CORD	1	(CORD ARMOR D10.7) FOR AUS
	87	940-778	CORD ARMOR D10.7	1	
	88	984-750	TAPPING SCREW (W/FLANGE) D4X16	2	
	89	960-266	CORD CLIP	1	
*	90	938-307	PILLAR TERMINAL	1	FOR USA

*: ALTERNATIVE PARTS

PARTS

H 45SB

ITEM NO.	CODE NO.	DESCRIPTION	NO. USED	REMARKS
91	938 - 477	HEX. SOCKET SET SCREW M5X8	2	
92A	302 - 323	TAIL COVER (B)	1	
93		NAME PLATE	1	
94	949 - 510	RIVET D2.5X4.8 (10 PCS.)	2	
* 95	985 - 474	WIRE SUPPORT	1	FOR USA
96	985 - 605	TAPPING SCREW (W/WASHER) D5X25	2	
97	980 - 751	HANDLE PACKING	1	
98	983 - 273	HANDLE (B)	1	
99	956 - 636	TAPPING SCREW (W/WASHER) D4X25	2	
100	980 - 657	HANDLE HOLDER ASS'Y	1	INCLUD.24,25,50
101A	990 - 146	DISTANCE PIECE (A)	4	TILL 1.1988
102	985 - 480	TAPPING SCREW (W/WASHER) D5X20	2	SINCE 10.1987

STANDARD ACCESSORIES

ITEM NO.	CODE NO.	DESCRIPTION	NO. USED	REMARKS
502	985 - 383	BULL POINT 300MM (12")	1	
503	944 - 459	HEX. BAR WRENCH 5MM	1	
504	971 - 129	CASE (STEEL)	1	
505	985 - 373	DUST COVER	1	

OPTIONAL ACCESSORIES

ITEM NO.	CODE NO.	DESCRIPTION	NO. USED	REMARKS
601	985 - 381	COLD CHISEL W25X300L (1"X12")	1	
602	985 - 384	CUTTER W38X300L (1 - 1/2"X12")	1	
603	985 - 385	CUTTER W50X300L (2"X12")	1	
604	985 - 386	SCOOP 105X405L (4 - 1/2"X16")	1	
605	983 - 278Z	SIDE HANDLE ASS'Y	1	INCLUD.24 - 26,48 - 50,100
606	980 - 734	SIDE HANDLE	1	
607A	987 - 712	SERVICE KIT (H 45SB)	1	INCLUD.5B,10,12,17,19,31 - 33,65,608
608	981 - 840	GREASE (A) FOR HAMMER.HAMMER DRILL (30G)	1	
609	308 - 471	GREASE FOR HAMMER.HAMMER DRILL (70G)	1	

* : ALTERNATIVE PARTS