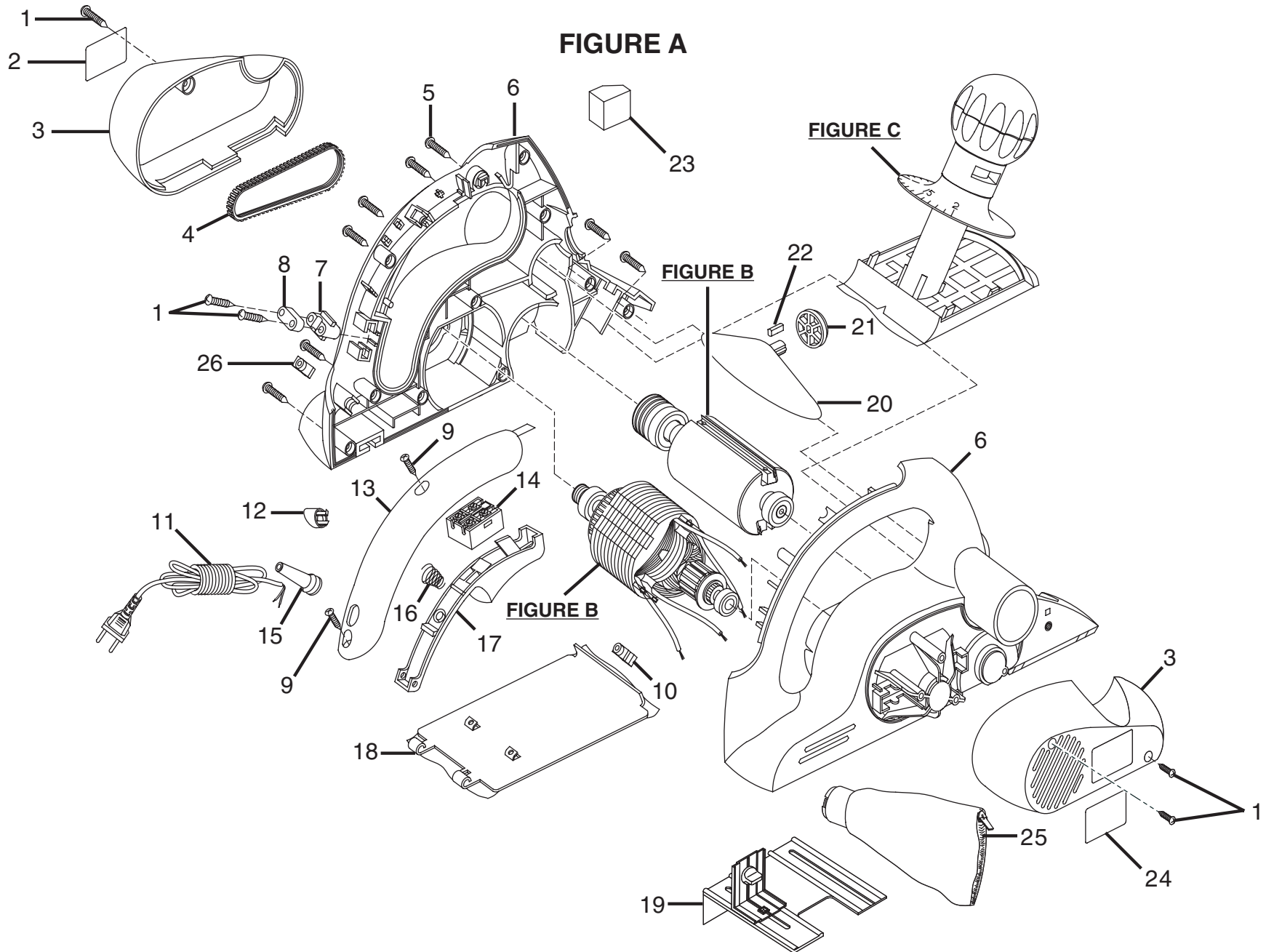


RYOBI HAND PLANER – MODEL NUMBER HPL50



## RYOBI HAND PLANER – MODEL NUMBER HPL50

The model number will be found on a plate attached to the motor housing. Always mention the model number in all correspondence regarding your **HAND PLANER** or when ordering repair parts.

### PARTS LIST FOR FIGURE A

KEY NO.	PART NO.	DESCRIPTION	QTY.	KEY NO.	PART NO.	DESCRIPTION	QTY.
1	L17503	SCREW (M4.2 X 15 mm ) .....	5	16	L17539	SPRING .....	1
2	HPL50K01	LOGO PLATE .....	1	17	L17540	TRIGGER .....	1
3	HPL50K-52	COVER ASSEMBLY.....	1	18	L17548	REAR SHOE .....	1
4	HPL50K03	DRIVE BELT .....	1	19	L17565	FENCE ASSESSORY .....	1
5	L17509	SCREW (M4.2 X 15 mm) .....	12	20	L17557	CHIP DEFLECTOR .....	1
6	HPL50K-53	MOTOR HOUSING ASSEMBLY .....	1	21	L17558	CHIP DEFLECTOR LEVER ASSEMBLY .....	1
7	L17545	CORD CLAMP SUPPORT .....	1	22	HPL50K-41	CHIP DEFLECTOR SHAFT .....	1
8	L17544	CORD CLAMP COVER .....	1	23	HPL50K25	FOAM .....	1
9	L17537	SCREW (M4.2 x 13 mm) .....	4	24	HPL50K10	RATING LABEL .....	1
10	L17546	PLASTIC SCREW ANCHOR .....	1	25	HPL50K11	DUST BAG ASSEMBLY .....	1
11	HPL50K06	POWER CORD .....	1	26	L17559	PLASTIC SCREW ANCHOR .....	1
12	HPL50K24	CAP .....	1	27	L17566	WRENCH (NOT SHOWN).....	1
13	L17538	HANDLE COVER .....	1	28	HPL50K14	CARRYING CASE (NOT SHOWN) .....	1
14	HPL50K07	SWITCH .....	1		983000048	OPERATOR'S MANUAL	
15	L17532	BEND RELIEF .....	1		983000048R	REPAIR SHEET (REV:02)	
					02-21-05		

**WARNING:** Improper repair of a double insulated tool can result in damages to the double insulation system possibly causing electrical shock or electrocution. Any repairs requiring disassembly of your tool requires safety testing and should only be performed by a Ryobi Authorized Service Center. For the service center nearest you call 1-800-525-2579.



## RYOBI HAND PLANER – MODEL NUMBER HPL50

The model number will be found on a plate attached to the motor housing. Always mention the model number in all correspondence regarding your **HAND PLANER** or when ordering repair parts.

### PARTS LIST FOR FIGURE B

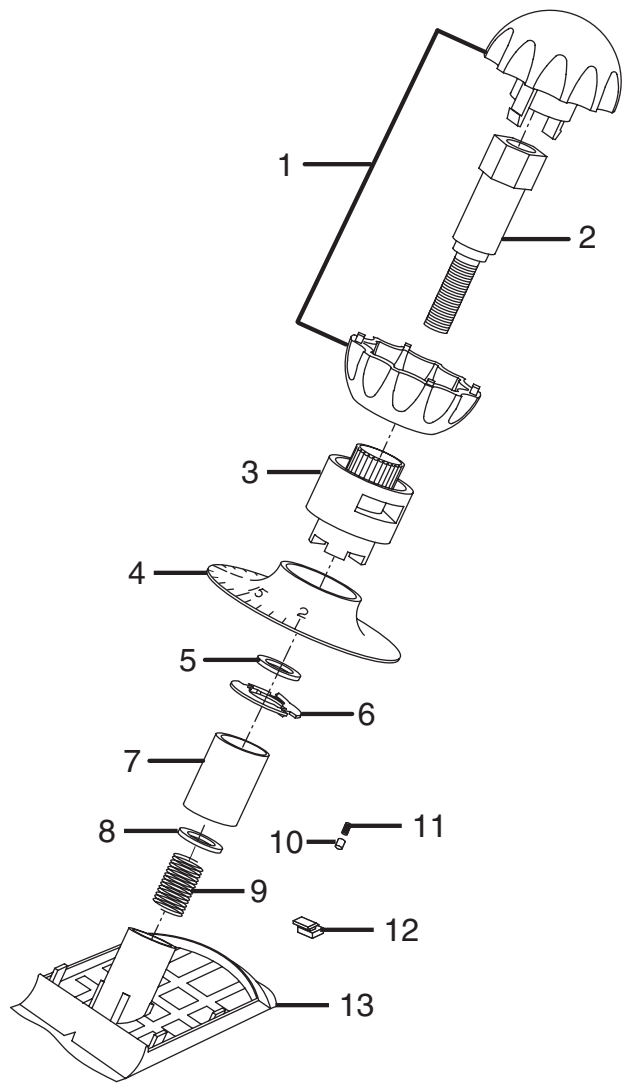
#### BLADE ASSEMBLY

KEY NO.	PART NO.	DESCRIPTION	QTY.
1	L17510	HEX NUT (M6) .....	1
2	L17511	PULLEY .....	1
3	L17512	SCREW (M4 X 12 mm) .....	2
4	L17513	WASHER .....	2
5	HPL50K-33	SECURING NUTS .....	6
6	HPL50K26	BLADE .....	2
7	HPL50K-29	BLADE HOLDER COVER .....	2
8	HPL50K-31	ADJUSTMENT SCREW .....	4
9	HPL50K-32	BLADE HOLDER SUPPORT .....	2
10	HPL50K-34	BLADE BODY .....	1
11	HPL50K-35	BALL BEARING (628z/p6x) .....	1
12	HPL50K-27	BAFFLE RING .....	1
13	HPL50K-28	BALL BEARING (6200z/p6x) .....	1
	L17528	BLADE BODY ASSEMBLY W/BEARINGS (INCLUDES KEY NOS. 10-13)	

#### MOTOR ASSEMBLY

KEY NO.	PART NO.	DESCRIPTION	QTY.
1	L17505	SCREW (M4 x 10 mm) .....	2
2	L17506	WASHER .....	2
3	HPL50K-37	BALL BEARING (608z/p6x) .....	1
4	HPL50K-36	BAFFLE RING .....	1
5	HPL50K05	ARMATURE ASSEMBLY (INCLUDES KEY NOS. 3, 4, AND 9) .....	1
6	HPL50K09	CARBON BRUSH .....	2
7	L17550	BRUSH HOLDER .....	2
8	L17549	BRUSH SUPPORT .....	2
9	HPL50K-39	BALL BEARING (628z/p6x) .....	1
10	L17541	FAN BAFFLE .....	1
11	L17529	SCREW (M4.2 X 55 mm) .....	2
12	HPL50K04	FIELD .....	1
13	HPL50K02	DRIVING WHEEL .....	1
14	L17553	BRUSH HOLD-DOWN BLOCK .....	2
15	HPL50K08	BRUSH SPRING .....	2

**FIGURE C**



**PARTS LIST**

KEY NO.	PART NO.	DESCRIPTION	QTY.
1	HPL50K-51	ADJUSTMENT KNOB ASSEMBLY.....	1
2	L17516	ADJUSTMENT ROD .....	1
3	L17518	CUTTING DEPTH MECHANISM .....	1
4	L17519	CUTTING DEPTH INDICATOR .....	1
5	L17520	WASHER .....	1
6	L17521	SPRING SLICE .....	1
7	L17522	ADJUSTMENT SLEEVE .....	1
8	L17525	ADJUSTMENT WASHER .....	1
9	L17523	ADJUSTMENT SPRING .....	1
10	L17527	COPPER SLEEVE .....	1
11	L17526	SPRING .....	1
12	L17514	DEPTH ADJUSTMENT LIMITER .....	1
13	L17524	ADJUSTMENT BASE.....	1