

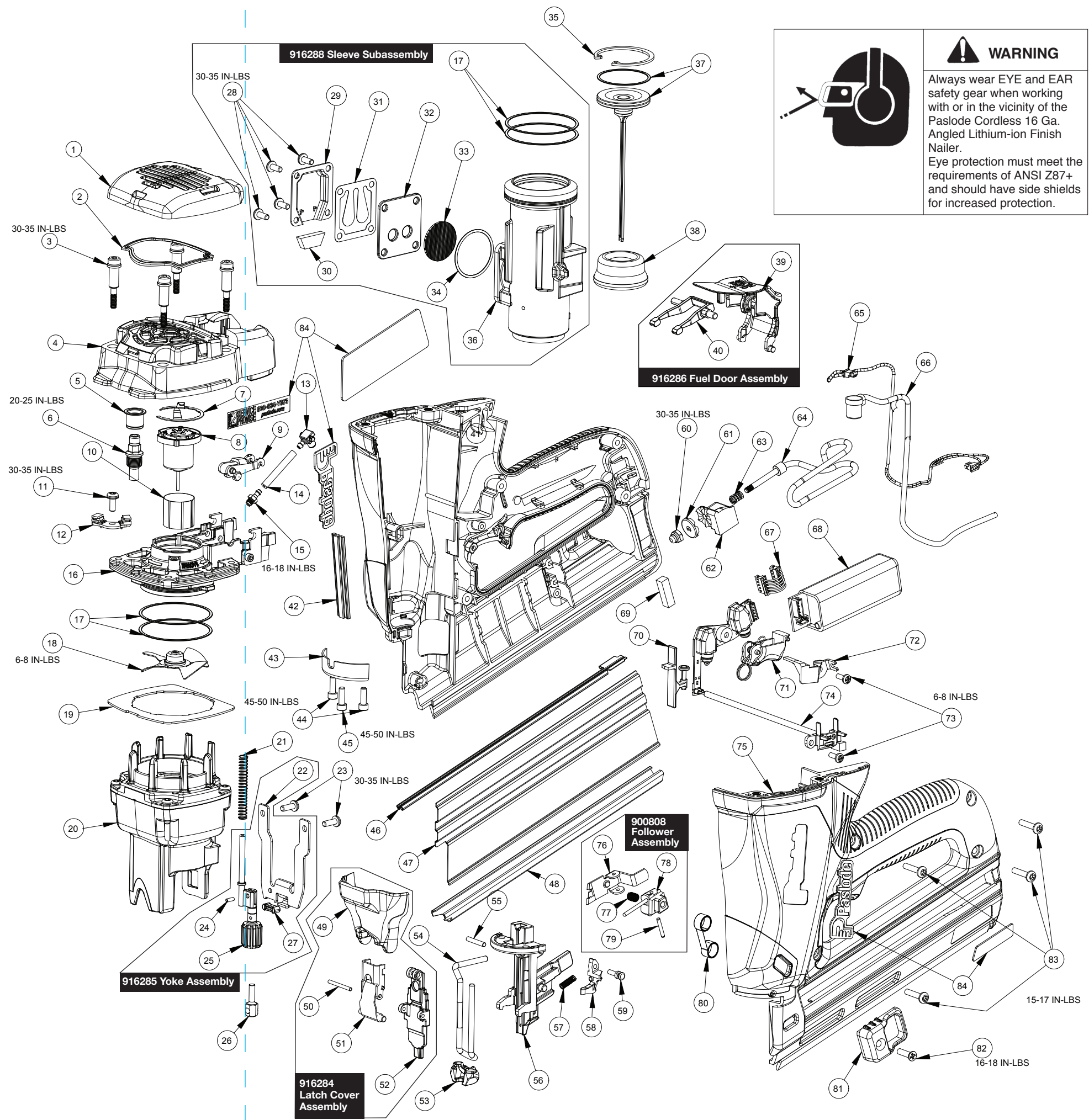
Part No. 916200:
CORDLESS 16 GAUGE ANGLED LITHIUM-ION FINISH NAILER

ITEM NO.	PART NUMBER	QTY	DESCRIPTION
1	916222	1	GRILLE
2	900648	1	FILTER
3	901064	4	SHOULDER SCREW #8-32 X 1-3/8"
4	916216	1	CAP
5	916249	1	INSULATOR
6	916236	1	SPARK PLUG ASSEMBLY
7	901119	1	RETAINING RING
8	901112	1	FAN MOTOR ASSEMBLY WITH RING
9	904521	1	PIVOT ARM
10	401356	1	MOTOR SLEEVE
11	900596	1	SEMS SCREW, TORX
12	900739	1	CYLINDER HEAD CIRCUIT BOARD ASSEMBLY
13	902406	1	FUEL BLOCK
14	904546	1	FUEL TUBE
15	904517	1	FUEL BARB
16	916208	1	CYLINDER HEAD ASSEMBLY
17	900612	4	SEAL RING
18	900709	1	FAN ASSEMBLY
19	900700	1	AIR DAM
20	900729	1	COMBUSTION CHAMBER
21	916239	1	SPRING, YOKE GUIDE
22	916214	1	YOKE
23	900746	2	SCREW, #8-32 X 7/16"
24	900734	1	ROLL PIN
25	916227	1	YOKE GUIDE AND DOD ASSEMBLY
26	916212	1	DOD STUD
27	916248	1	YOKE BUMPER
28	405140	4	SCREW #8-32 X 3/8" (RED)
29	900668	1	MUFFLER COVER
30	900609	1	MUFFLER
31	900664	1	REED VALVE
32	900665	1	REED PLATE
33	901089	1	EXHAUST BAFFLE
34	900616	1	EXHAUST O-RING
35	403099	1	RETAINING RING
36	916232	1	SLEEVE
*37	900728	1	PISTON ASSEMBLY
*38	900680	1	PISTON BUMPER
39	916210	1	FUEL DOOR
40	916209	1	DOSING LEVER
41	916201	1	RIGHT HANDLE
42	916229	1	FRONT CHANNEL
43	916231	1	RETAINING CUP

ITEM NO.	PART NUMBER	QTY	DESCRIPTION
44	900708	2	SHC SCREW #8-32 X 3/8" (RED)
45	900754	1	SHC SCREW #8-32 X 3/8" (YELLOW)
46	916230	1	BRAD CHANNEL
47	916215	1	MAGAZINE PLATE
48	916205	1	BINDING CHANNEL
49	916220	1	LATCH COVER
50	900685	1	DOWEL PIN
51	902426	1	QUICK CLEAR LEVER ASSEMBLY
52	916204	1	FRONT PLATE
*53	902425	1	PROBE TIP
54	916206	1	LOWER PROBE - WIRE FORM
55	916234	1	DOWEL PIN - NOSE
56	916203	1	BACK PLATE
57	900631	1	SPRING, LOCKOUT
58	900602	1	LOCKOUT BAR
59	900630	1	LOCKOUT PIN
60	918909	1	UTILITY HOOK CAP NUT
61	918910	1	UTILITY HOOK BUTTON
62	918911	1	UTILITY HOOK BLOCK
63	918913	1	SPRING, UTILITY HOOK
64	918906	1	UTILITY HOOK, WIRE FORM
65	904562	1	FAN MOTOR WIRE ASSEMBLY
66	904567	1	SPARK WIRE ASSEMBLY
67	900662	1	ESU POWER WIRE ASSEMBLY
68	916258	1	MSU
69	902621	1	BATTERY PAD
70	900726	1	SWITCH SLIDE ASSEMBLY
71	901082	1	TRIGGER ASSEMBLY
72	900629	1	CLIP/ HIGH TENSION
73	404702	2	SCREW #6-32 X 3/8"
74	902439	1	MOLDED CIRCUIT ASSEMBLY
75	916202	1	LEFT HANDLE
76	900679	1	FOLLOWER
77	900691	1	COMPRESSION SPRING
78	900720	1	FOLLOWER CORE
79	900722	1	FOLLOWER PIN
80	900627	1	NEGATOR SPRING
81	916218	1	FOLLOWER BODY
82	916287	1	SCREW, PLASTITE #8-16 X 5/8"
83	901066	4	SCREW, PLASTITE #8-16 X 3/4"
**84	916260	1	LABEL PACK

* Indicates normal wear items
 ** Make sure Warning Label is properly affixed. Replace if necessary. Label is available at no charge through the Service Department.
 → Denotes New Change

WARNING
 All parts must be periodically inspected and replaced if worn or broken. Failure to do this can affect the tool's operation and present a safety hazard.



WARNING
 Always wear EYE and EAR safety gear when working with or in the vicinity of the Paslode Cordless 16 Ga. Angled Lithium-ion Finish Nailer. Eye protection must meet the requirements of ANSI Z87+ and should have side shields for increased protection.

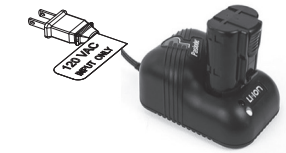
ACCESSORIES / Accesorios

Battery
Batería



Part No. 902654

Battery Charger
De cargador de baterías



Part No. 902672

9/64" Hex Key
Llave hexagonal de 9/64"

For cleaning tool.
 Para la limpieza de la herramienta.



Part No. 900736

Clear Safety Glasses
Lentes de seguridad claros



Part No. 401382

Tool Cleaner
Limpiador

Ideal cleaner for all Paslode® tools.
 Limpiador ideal para todas las herramientas Paslode.



Part No. 219348

Paslode Cordless Lubricating Oil
Aceite lubricante Paslode

Specially formulated for use in Paslode® Cordless tools.
 Formulado especialmente para su uso en herramientas Paslode Cordless.



Part No. 401482

Carrying Case
Maletín para la clavadora



Part No. 905640

No Mar Probe replacement tip
Punta "No Mar" (que no deja marcas)



Single Tip: Part No. 902425
 Three Pack: Part No. 902473

For technical support call:
 1-800-222-6990
 or email:
 tech@paslode.com

Para ayuda tecnica en español llame:
 1-800-334-4811.
 e correo electrónico:
 tech@paslode.com

Paslode
 An Illinois Tool Works Company
 155 Harlem Avenue
 Glenview, IL 60025
 www.paslode.com