



Operating Instructions and Parts Manual

16-speed Woodworking Drill Press

Model JDP-17

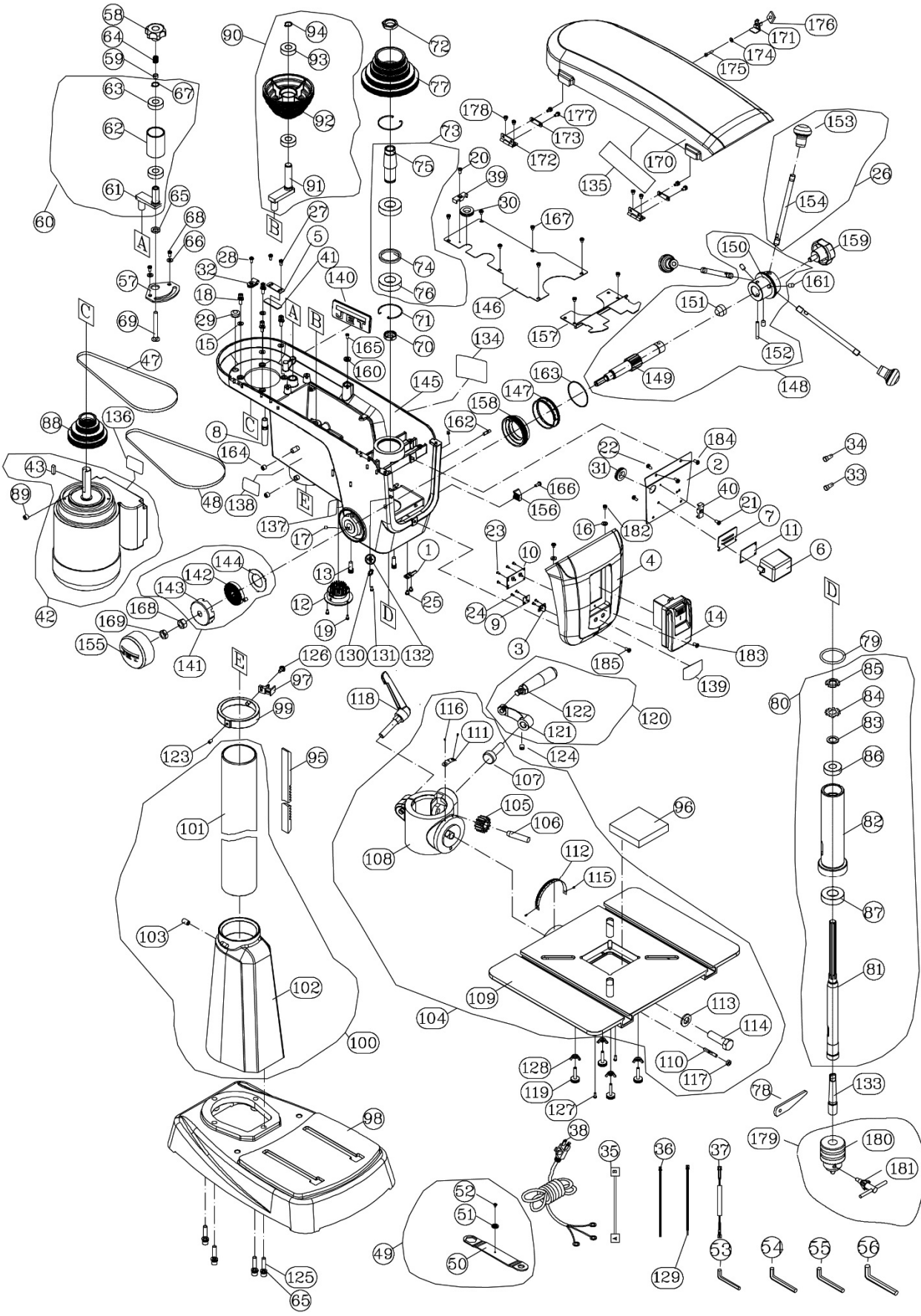


For serial no. 15110001 and higher

JET
427 New Sanford Road
LaVergne, Tennessee 37086
Ph.: 800-274-6848
www.jettools.com

Part No. M-716300
Revision C 10/2015
ECR 151014133950
Copyright © 2015 JET

14.1.1 JDP-17 Drill Press – Exploded View



14.1.2 JDP-17 Drill Press – Parts List

| Index No | Part No | Description | Size | Qty |
|----------|--------------|---|------------------|-----|
| 1 | JDP17-001R | Anchor Plate | | 1 |
| 2 | JDP17-002R | Plate | | 1 |
| 3 | JDP17-102 | Indicator Light | | 1 |
| 4 | JDP17-004R | Front Housing | | 1 |
| 5 | JDP17-108 | Plate | | 1 |
| 6 | JDP17-006R | Controller Box | | 1 |
| 7 | JDP17-007R | Controller Box Cover | | 1 |
| 8 | JDP17-031 | Cord Guard A | | 1 |
| 9 | JDP17-101 | LED Circuit Board | | 1 |
| 10 | JDP17-107 | MCU Circuit Board | | 1 |
| 11 | JDP17-104 | Control Switch Board | | 1 |
| 12 | JDP17-012R | LED Lamp Assembly | DC 12V, 1W x 3 | 1 |
| 13 | JDP17-096 | Laser Assembly | | 2 |
| 14 | JDP17-100 | Switch Assembly | | 1 |
| | JDP17-100-1 | Switch Body (not shown) | | 1 |
| | JDP17-100-2 | Switch Paddle (not shown) | | 1 |
| | JDP17-100-3 | Safety Key (not shown) | | 1 |
| 15 | TS-1550041 | Flat Washer | M6 | 4 |
| 16 | TS-1550031 | Flat Washer | M5 | 2 |
| 17 | TS-1523011 | Socket Set Screw | M6 x 6 | 2 |
| 18 | TS-1503061 | Socket HD Cap Screw | M6 x 25 | 4 |
| 19 | F000065 | Truss Head Machine Screw | M5 x 8 | 2 |
| 20 | TS-1533042 | Pan Head Machine Screw | M5 x 12 | 1 |
| 21 | F011317 | Pan Head Tapping Screw | M5 x 16 | 1 |
| 22 | PM1500-039 | Pan Head Tapping Screw | M4 x 8 | 2 |
| 23 | 131803108 | Pan Head Tapping Screw | M3 x 8 | 4 |
| 24 | 131803108 | Pan Head Tapping Screw | M3 x 8 | 4 |
| 25 | JDP20-111 | Pan Head Machine Screw | M5 x 6 | 2 |
| 26 | JDP17-208 | Handle Assembly (#153 and #154) | | 3 |
| 28 | TS-1533042 | Pan Head Machine Screw | M5 x 12 | 2 |
| 27 | TS-1533032 | Pan Head Machine Screw | M5 x 10 | 1 |
| 29 | JDP17-058 | Rubber Washer | Dia. 10mm | 1 |
| 30 | JDP17-032 | Cord Guard | Dia. 20mm | 1 |
| 31 | JDP17-032 | Cord Guard | Dia. 20mm | 1 |
| 32 | JDP17-131 | Cable Clamp | | 1 |
| 33 | JDP17-033R | Closed End Connector | 16~14AWG UL CE2 | 2 |
| 34 | JDP17-034R | Terminal | 12~10AWG UL CE5 | 2 |
| 35 | JDP17-115 | Extension Cord for LED Light | | 1 |
| 36 | JDP17-036R | Extension Cord for Motor with Transformer | | 1 |
| 37 | JDP17-037R | Extension Cord for Laser Guide | | 1 |
| 38 | JDP17-116 | Power Cable | 16AWG x 3C | 1 |
| 39 | JDP17-057 | Cord Clamp | RM404, #6 | 1 |
| 40 | JDP17-057 | Cord Clamp | RM404, #6 | 1 |
| 41 | JDP17-041R | Heat Shrinking Sleeve | | 1 |
| 42 | JDP17-042R | Motor Assembly (includes #43) | 3/4HP, 115V, 1Ph | 1 |
| | JDP17-033MF | Motor Fan (not shown) | | 1 |
| | JDP17-033SC | Starting Capacitor (not shown) | 150µF, 125V | 1 |
| | JDP17-033RC | Running Capacitor (not shown) | 40µF, 250V | 1 |
| | JDP17-033JB | Junction Box (not shown) | | 1 |
| | JDP17-033JBC | Junction Box Cover (not shown) | | 1 |
| 43 | JDP17-043R | Parallel Key | 6 x 6 x 30 | 1 |
| 47 | JDP17-036 | Poly V-Belt | 4PJ690 | 1 |
| 48 | JDP17-036 | Poly V-Belt | 4PJ690 | 1 |
| 49 | JDP17-212 | Table Wrench Assembly (#50 thru #52) | | 1 |
| 50 | JDP17-126 | Wrench | | 1 |
| 51 | JDP17-062 | Magnet | | 1 |
| 52 | TS-2171012 | Pan HD Slotted Screw | M4 x 6 | 1 |
| 53 | TS-152704 | Hex Wrench | 3mm | 1 |
| 54 | TS-152705 | Hex Wrench | 4mm | 1 |
| 55 | TS-152706 | Hex Wrench | 5mm | 1 |

| Index No | Part No | Description | Size | Qty |
|----------|------------|--|---------------|-----|
| 56 | TS-152707 | Hex Wrench | 6mm | 1 |
| 57 | JDP17-042 | Tension Roller Base | | 1 |
| 58 | JDP17-037 | Handle | | 1 |
| 59 | JDP17-041 | Sleeve | | 1 |
| 60 | JDP17-205 | Tension Roller Assembly (#61 thru #63 and #67) | | 1 |
| 61 | JDP17-040 | Shaft | | 1 |
| 62 | JDP17-039 | Belt Tensioner | | 1 |
| 63 | BB-6202ZZ | Ball Bearing | 6202ZZ | 2 |
| 64 | JDP17-034 | Compression Spring | | 1 |
| 65 | TS-1550061 | Flat Washer | M8 | 5 |
| 66 | TS-1550031 | Flat Washer | M5 | 2 |
| 67 | JDP17-067R | C-Ring | A-15 | 1 |
| 68 | TS-1533042 | Pan Head Machine Screw | M5 x 12 | 2 |
| 69 | JDP17-069R | Square Head Bolt | M8 x 75 | 1 |
| 70 | JDP17-070R | Plastic Sleeve | | 1 |
| 71 | JDP17-077 | Retaining Ring | R52 | 2 |
| 72 | JDP17-072R | Pulley Set Nut | | 1 |
| 73 | JDP17-073R | Drive Sleeve Assembly (#74 thru #76) | | 1 |
| 74 | JDP17-074R | Spacer | | 1 |
| 75 | JDP17-075R | Drive Sleeve | | 1 |
| 76 | BB-6205ZZ | Ball Bearing | 6205ZZ | 2 |
| 77 | JDP17-076 | Spindle Pulley | | 1 |
| 78 | JDP17-109 | Drift Key | | 3 |
| 79 | JDP17-105 | Rubber Washer | | 1 |
| 80 | JDP17-080R | Quill Assembly (#81 thru #87) | | 1 |
| 81 | JDP17-081R | Spindle | | 3 |
| 82 | JDP17-082R | Quill | | 1 |
| 83 | JDP17-083R | Washer | | 1 |
| 84 | JDP17-084R | Locking Nut | | 1 |
| 85 | JDP17-085R | Spindle Nut | | 1 |
| 86 | BB-6203ZZ | Ball Bearing | 6203ZZ | 1 |
| 87 | BB-6205ZZ | Ball Bearing | 6205ZZ | 1 |
| 88 | JDP17-088R | Motor Pulley | | 1 |
| 89 | TS-1524011 | Socket Set Screw | M8 x 8 | 1 |
| 90 | JDP17-206 | Center Pulley Assembly (#91 thru #94) | | 1 |
| 91 | JDP17-047 | Center Pulley Shaft | | 1 |
| 92 | JDP17-048 | Center Pulley | | 1 |
| 93 | BB-6202ZZ | Ball Bearing | 6202ZZ | 1 |
| 94 | JDP17-067R | C-Ring | A-15 | 1 |
| 95 | JDP17-008 | Rack | | 1 |
| 96 | JDP17-130 | Table Wood Insert | | 1 |
| 97 | JDP17-097R | Chuck Key Holder | | 1 |
| 98 | JDP17-098R | Base | | 1 |
| 99 | JDP17-007 | Rack Collar | | 1 |
| 100 | JDP17-100R | Column Assembly (#101 thru #103) | | 1 |
| 101 | JDP17-005 | Column | | 1 |
| 102 | JDP17-102R | Column Support | | 1 |
| 103 | TS-1525031 | Socket Set Screw | M10 x 16 | 1 |
| 104 | JDP17-203R | Table Assembly (#105 thru #117) | | 1 |
| 105 | JDP17-018 | Helical Gear | | 1 |
| 106 | JDP17-014 | Gear Pin | | 1 |
| 107 | JDP17-024 | Worm Shaft | | 1 |
| 108 | JDP17-108R | Table Support | | 1 |
| 109 | JDP17-109R | Table | | 1 |
| 110 | JDP17-016 | Taper Pin | | 1 |
| 111 | JDP17-021 | Scale Indicator | | 1 |
| 112 | JDP17-020 | Tilt Scale | | 1 |
| 113 | TS-155010 | Flat Washer | M16 | 1 |
| 114 | TS-0071031 | Hex Cap Screw | 5/8-11 x 2 | 1 |
| 115 | JDP17-025 | Pan Head Rivet | Dia.2.3 x 3.5 | 2 |
| 116 | JDP17-025 | Pan Head Rivet | Dia.2.3 x 3.5 | 2 |

| Index No | Part No | Description | Size | Qty |
|----------|------------|---|---------------|-----|
| 117 | TS-1540061 | Hex Nut | M8 | 1 |
| 118 | JDP17-011 | Lock Handle | | 1 |
| 119 | JDP17-118 | Special Bolt | | 4 |
| 120 | JDP17-202 | Crank Arm Handle Assembly (#121 and #122) | | 1 |
| 121 | JDP17-012 | Crank Arm Shaft | | 1 |
| 122 | JDP17-013 | Crank Arm Handle Grip | | 1 |
| 123 | TS-1523031 | Socket Set Screw | M6 x 10 | 1 |
| 124 | TS-1524011 | Socket Set Screw | M8 x 8 | 1 |
| 125 | TS-1504101 | Socket HD Cap Screw | M8 x 50 | 4 |
| 126 | TS-1534042 | Pan Head Machine Screw | M6 x 12 | 1 |
| 127 | JDP17-090 | Pan HD Tapping Screw | M4 x 20 | 2 |
| 128 | JDP17-117 | Wing Nut | M6 | 4 |
| 129 | JDP17-129R | Cable Tie | A-120S | 1 |
| 130 | F002097 | External Tooth Lock Washer | M5 | 2 |
| 131 | 5712561 | Pan Head Machine Screw | M5 x 8 | 2 |
| 132 | JDP17-132R | Grounding Label | | 1 |
| 133 | JDP17-128 | Arbor | MT2/JT3 | 1 |
| 134 | JDP17-125 | Warning Label | | 1 |
| 135 | JDP17-119 | Speed Label | | 1 |
| 136 | JDP17-124 | Motor Label | | 1 |
| 137 | JDP17-123 | Laser Caution Label | | 1 |
| 138 | JDP17-120 | Serial Plate | | 1 |
| 139 | JDP17-121 | Control Label | | 1 |
| 140 | JET-92 | JET Logo | 92 x 38 mm | 1 |
| 141 | JDP17-141R | Coil Spring Assembly (#142 thru #144) | | 1 |
| 142 | JDP17-142R | Coil Spring | | 1 |
| 143 | JDP17-143R | Spring Housing | | 1 |
| 144 | JDP17-144R | Spring Retainer | | 1 |
| 145 | JDP17-145R | Headstock | | 1 |
| 146 | JDP17-146R | Plate Cover | | 1 |
| 147 | JDP17-147R | Spindle Scale | | 1 |
| 148 | JDP17-148R | Pinion Shaft Assembly (#149 thru #152) | | 1 |
| 149 | JDP17-149R | Pinion Shaft | | 1 |
| 150 | JDP17-150R | Hub | | 1 |
| 151 | JDP17-151R | Taper Axis | | 1 |
| 152 | JDP17-065 | Pin | 6-45 | 1 |
| 153 | JDP17-070 | Grip | | 3 |
| 154 | JDP17-069 | Handle | | 3 |
| 155 | JDP17-155R | Spring Housing Cap | | 1 |
| 156 | JDP17-045 | Depth Stop Indicator | | 1 |
| 157 | JDP17-157R | Front Cover | | 1 |
| 158 | JDP17-158R | Ring | | 1 |
| 159 | JDP17-072 | Lock Handle | | 1 |
| 160 | JDP17-062 | Magnet | | 1 |
| 161 | JDP17-161R | Pin | | 3 |
| 162 | JDP17-094 | Stop Screw | | 1 |
| 163 | JDP17-163R | O-Ring | 60 x 1.5 NBR | 1 |
| 164 | F010431 | Socket Set Screw | M10 x 8 | 2 |
| 165 | 6286927 | CR RE Count HD Screw | M4 x 10 | 1 |
| 166 | TS-1533042 | Pan Head Machine Screw | M5 x 12 | 1 |
| 167 | TS-1533032 | Pan Head Machine Screw | M5 x 10 | 8 |
| 168 | JDP17-168R | Hex Nut | 1/2-20 x T10 | 1 |
| 169 | JDP17-169R | Hex Nut | 1/2-20 x T6.5 | 1 |
| 170 | JDP17-170R | Pulley Cover | | 1 |
| 171 | JDP17-051 | Plate | | 1 |
| 172 | JDP17-055 | Hinge | | 2 |
| 173 | JDP17-056 | Pressing Plate | | 2 |
| 174 | TS-1550021 | Flat Washer | M4 | 1 |
| 175 | TS-1501061 | Socket HD Cap Screw | M4 x 20 | 1 |
| 176 | JDP17-176R | Follower Plate | | 1 |
| 177 | TS-1533032 | Pan Head Machine Screw | M5 x 10 | 4 |
| 178 | JDP20-111 | Pan Head Machine Screw | M5 x 6 | 4 |

| Index No | Part No | Description | Size | Qty |
|----------|------------|---|---------|-----|
| 179 | JDP17-211 | Chuck Assembly (#180 and #181) | | 1 |
| 180 | JDP17-091 | Chuck Key | T4 | 1 |
| 181 | JDP17-092 | Chuck | RJ-16L | 1 |
| 182 | TS-1533032 | Pan Head Machine Screw | M5 x 10 | 2 |
| 183 | JDP17-090 | Pan HD Tapping Screw | M4 x 16 | 1 |
| 184 | JDP20-111 | Pan Head Machine Screw | M5 x 6 | 2 |
| 185 | TS-1533032 | Pan Head Machine Screw | M5 x 10 | 1 |
| | JDP17-HP2 | Hardware Package (see sect. 6.2 for included items) | | 1 |

Some parts are shown for reference only, and may not be available individually.

Non-proprietary parts, such as fasteners, can usually be found at local hardware stores, or may be ordered from JET.



427 New Sanford Road
LaVergne, Tennessee 37086
Phone: 800-274-6848
www.jettools.com