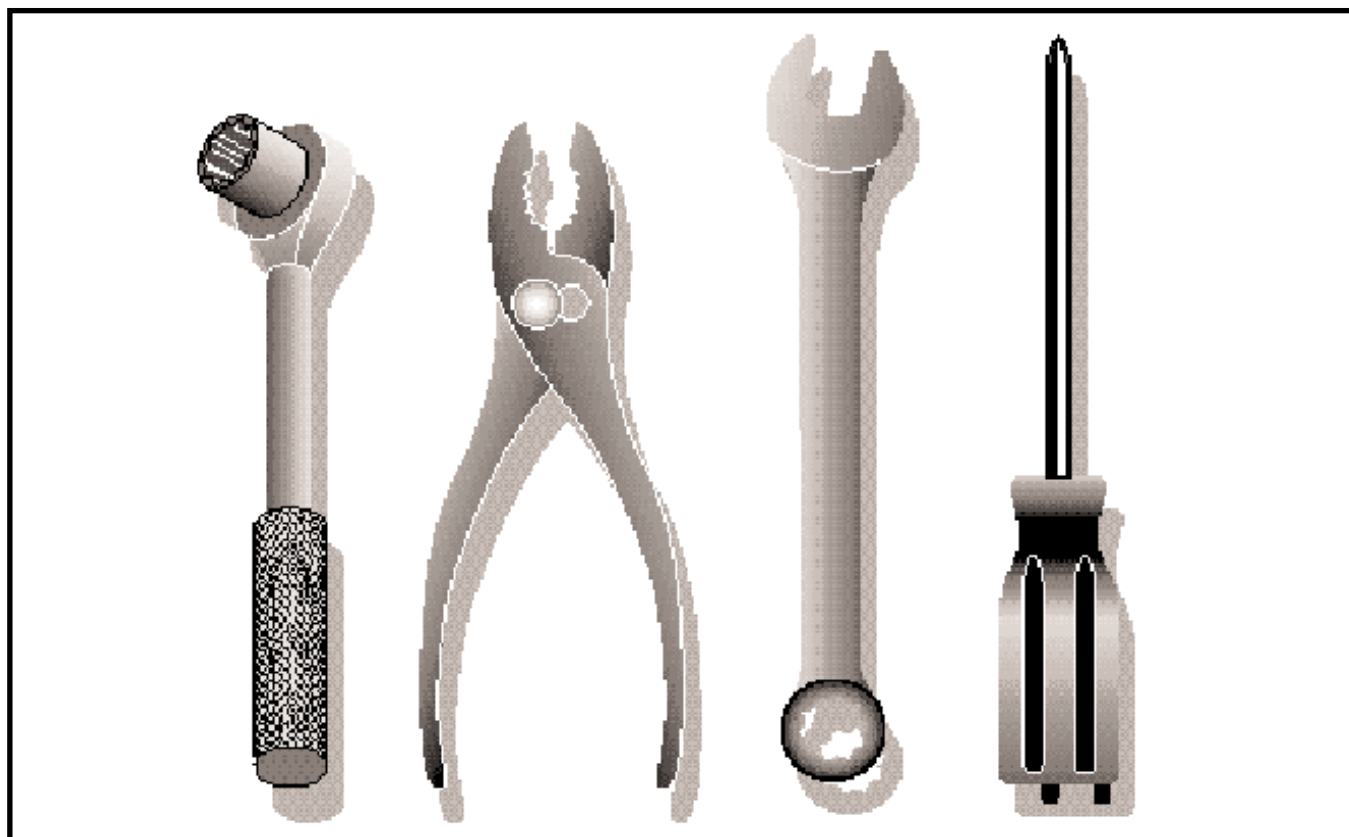


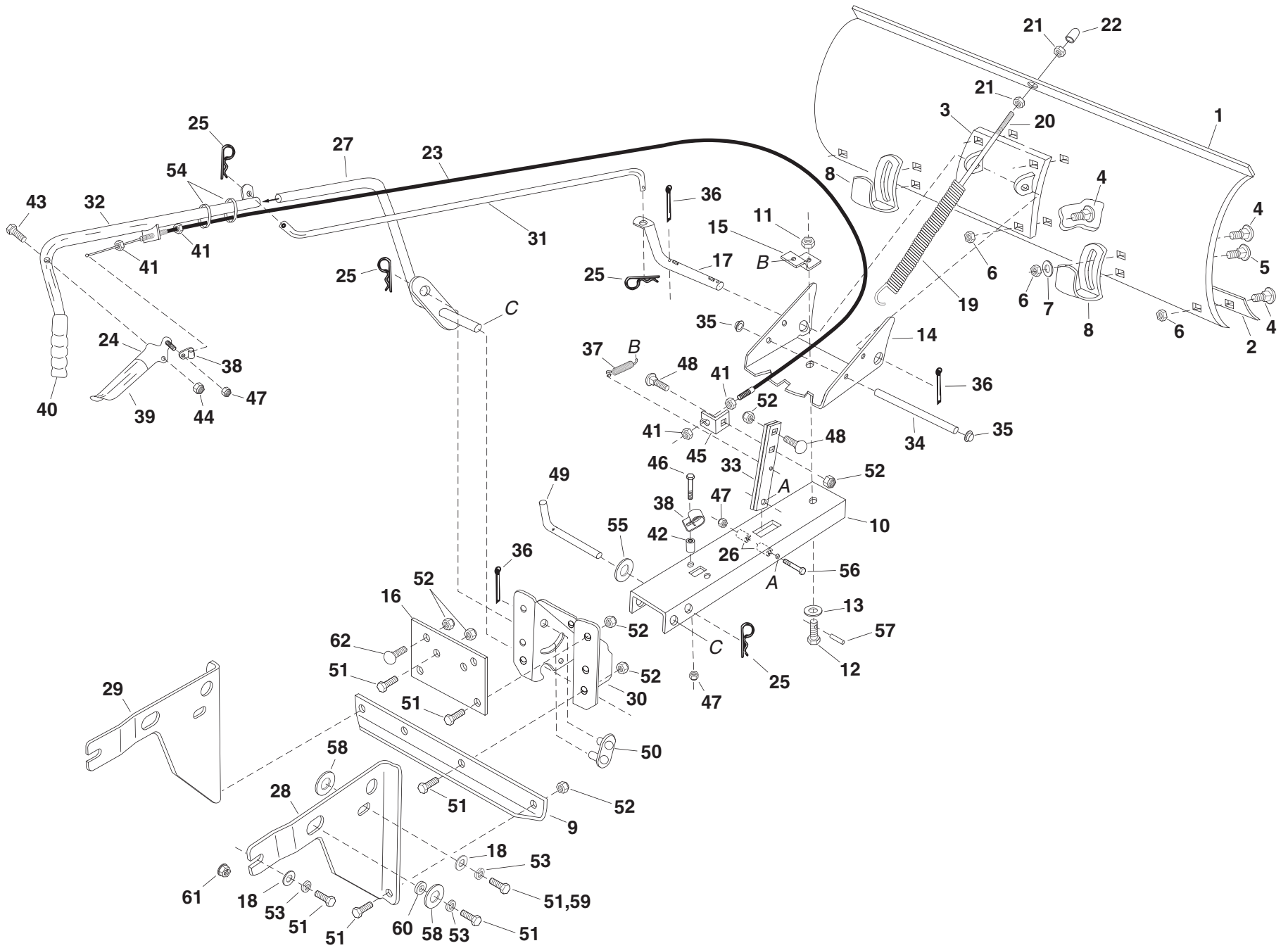
Snow Blade

LBD48

(490-900-0030)



REPAIR PARTS FOR MODEL 490-900-0030 - 48" SNOW BLADE



REPAIR PARTS FOR MODEL 490-900-0030 - 48" SNOW BLADE

| REF. NO. | PART NO. | QTY. | DESCRIPTION | REF. NO. | PART NO. | QTY. | DESCRIPTION |
|----------|----------|------|-------------------------------|----------|-----------|------|------------------------------------|
| 1 | 23955 | 1 | Blade 48" | 32 | 62972 | 1 | Lift Handle Tube Assembly |
| 2 | 23956 | 1 | Wear Plate 48" | 33 | 23151 | 2 | Angle Lock Bar |
| 3 | 62980 | 1 | Reinforcement Plate Assembly | 34 | 23856 | 1 | Spring Mount Rod |
| 4 | 43080 | 8 | Bolt, Carriage 5/16-18 x 3/4" | 35 | 44917 | 2 | Palnut, 3/8" |
| 5 | 43079 | 2 | Bolt, Carriage 5/16-18 x 1" | 36 | 43010 | 3 | Cotter Pin 1/8" x 1-1/4" |
| 6 | 43064 | 10 | Hex Lock Nut, 5/16-18 Thread | 37 | 43348 | 1 | Angle Lock Spring |
| 7 | 43081 | 4 | Washer, 5/16" | 38 | 746-0260 | 2 | Cable End Fitting |
| 8 | 24690 | 2 | Skid Shoe | 39 | 731-0869 | 1 | Grip, Plastic |
| 9 | 24346 | 1 | Bracket, Cross Tie | 40 | 46471 | 1 | Handle, Grip |
| 10 | 24347 | 1 | Push Channel | 41 | 712-0256 | 4 | Hex Jam Nut, 5/16-24 Thread |
| 11 | 43262 | 1 | Hex Lock Nut, 1/2-13 Thread | 42 | 23658 | 1 | Spacer |
| 12 | 23131 | 1 | Bolt, Special Pivot | 43 | 43085 | 1 | Hex Bolt, 5/16-18 x 1-1/2" |
| 13 | 1540-118 | 1 | Washer, Flat 1/2" | 44 | 47810 | 1 | Hex Nut, Nylock 5/16-18 Thread |
| 14 | 23958 | 1 | Plate, Pivot 7 Ga. | 45 | 05762 | 1 | Cable Mount Bracket |
| 15 | 23130 | 1 | Bracket, Spring Mt. | 46 | 43648 | 1 | Hex Bolt 1/4-20 x 1-1/2" |
| 16 | 25452 | 1 | Bracket, Pivot Plate | 47 | 47189 | 3 | Hex Nut, Nylock 1/4-20 Thread |
| 17 | 46066 | 1 | Shaft, Blade Pivot | 48 | 710-0305 | 2 | Carriage Bolt, 3/8-16 x 1-1/4" |
| 18 | 43070 | 4 | Washer, 3/8" STD. | 49 | 46065 | 1 | Channel Pivot Pin |
| 19 | 9466R | 1 | Spring, Blade Adjust | 50 | 63034 | 1 | Lift Link Assembly |
| 20 | 44071 | 1 | Hex Bolt, 3/8-16 x 3-1/2" | 51 | 43001 | 12 | Hex Bolt, 3/8-16 x 1" |
| 21 | 43015 | 2 | Hex Nut, 3/8-16 Thread | 52 | HA21362 | 12 | Hex Nut, Nylock 3/8-16 Thread |
| 22 | 44074 | 1 | Plastic Cap | 53 | 43003 | 4 | Lock Washer 3/8" |
| 23 | 746-0366 | 1 | Control Cable Assembly | 54 | 726-0178 | 2 | Plastic Tie |
| 24 | 62561 | 1 | Release Grip Assembly | 55 | R19171616 | 1 | Washer |
| 25 | 43055 | 4 | Pin, Hairpin Small 3/32" | 56 | 46071 | 1 | Hex Bolt, 1/4-20 x 3-1/4" Lg. Gr 5 |
| 26 | 46053 | 2 | Spacer, .28 ID x 1" | 57 | 43349 | 1 | 1/4" x 1" Spring Pin |
| 27 | 63033 | 1 | Lift Handle Rod Assembly | 58 | R19172410 | 2 | Washer, 1/2" (Large) |
| 28 | 24652 | 1 | Hanger Bracket, R.H. | 59 | 47631 | 2 | Hex Bolt, 3/8" x 1" (Thd. Forming) |
| 29 | 24651 | 1 | Hanger Bracket, L.H. | 60 | 750-0437 | 2 | Spacer |
| 30 | 24023 | 1 | Pivot Support Bracket | 61 | 46584 | 1 | Flanged Nut, 5/16-18 (Whizlock) |
| 31 | 46049 | 1 | Rod, Blade Pivot | 62 | 43350 | 2 | Carraige Bolt, 3/8-16 x 1" |
| | | | | | 49531 | 1 | Owners Manual |