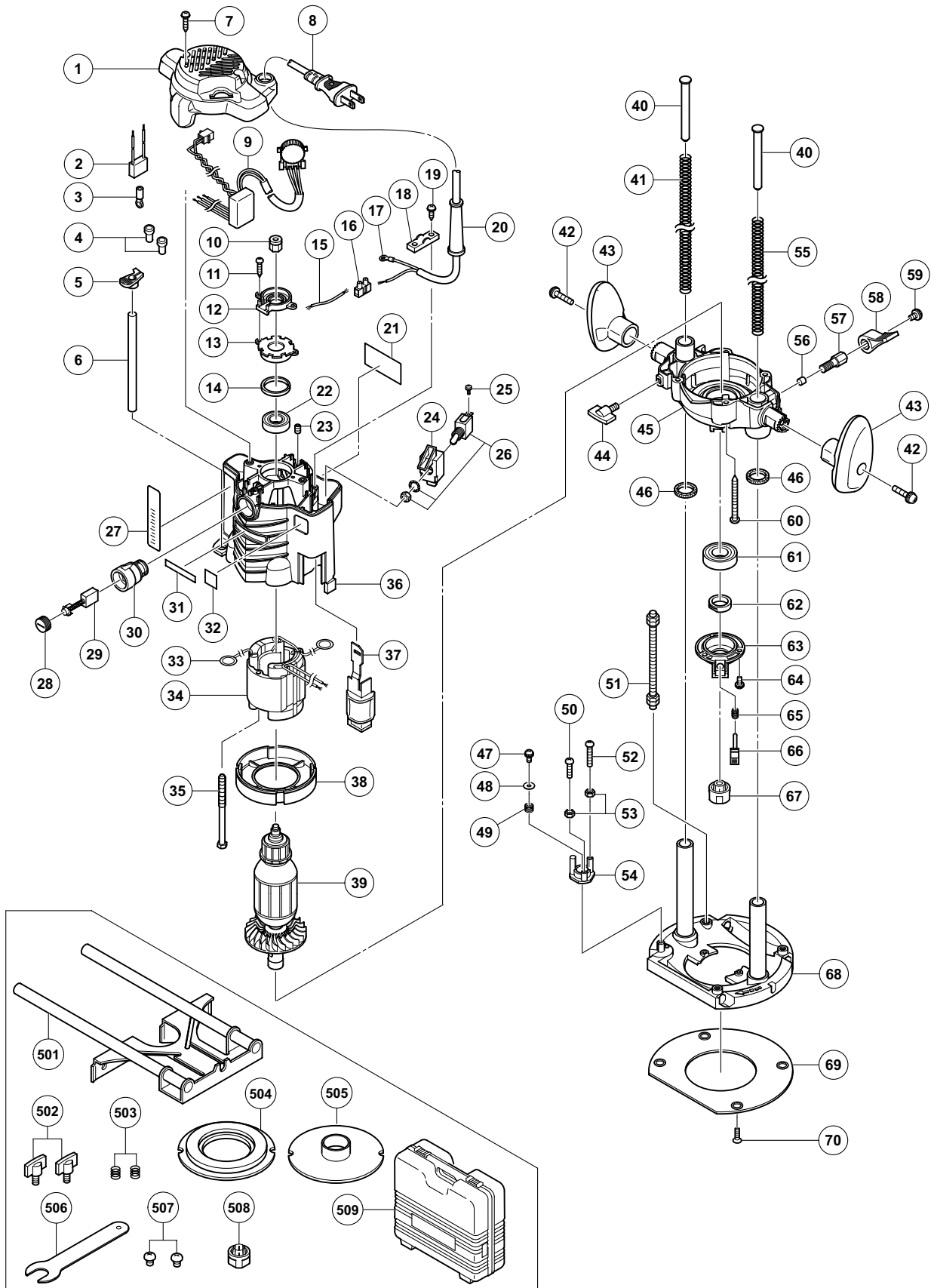


ELECTRIC TOOL PARTS LIST

ROUTER

2009·10·21

Model M 12VE**(E1)**

PARTS

M 12VE

ITEM NO.	CODE NO.	DESCRIPTION	NO. USED	REMARKS
1	331-809	TOP COVER	1	
* 2	930-039	NOISE SUPPRESSOR	1	FOR EUROPE, AUT, GBR, FIN, DEN, SWE, NOR, SUI, AUS, NZL, ISR, CHN, SAF
3	930-804	TERMINAL M4.0 (10 PCS.)	1	
4	959-141	CONNECTOR 50092 (10 PCS.)	2	
5	331-823	MARKER	1	
6	325-196	STOPPER POLE (A)	1	
7	301-653	TAPPING SCREW (W/FLANGE) D4 X 20 (BLACK)	2	
* 8	500-234Z	CORD	1	(CORD ARMOR D8.8)
* 8	500-247Z	CORD	1	(CORD ARMOR D8.8) FOR AUT, FIN, DEN, SWE, NOR
* 8	500-463Z	CORD	1	(CORD ARMOR D8.8) FOR GBR (110V)
* 8	500-435Z	CORD	1	(CORD ARMOR 8.8) FOR GBR (230V)
* 8	500-248Z	CORD	1	(CORD ARMOR 8.8) FOR SUI
* 8	500-242Z	CORD	1	(CORD ARMOR D10.1) FOR USA, CAN, MEX, PAN
* 8	500-237Z	CORD	1	(CORD ARMOR D8.8) FOR BRA
* 8	500-439Z	CORD	1	(CORD ARMOR D8.8) FOR AUS, NZL
* 8	500-455Z	CORD	1	(CORD ARMOR D8.8) FOR CHN, THA, PHI
* 8	500-423Z	CORD	1	(CORD ARMOR D8.8) FOR SIN, MAL
* 8	500-234Z	CORD	1	(CORD ARMOR D8.8) FOR KOR
* 8	500-474Z	CORD	1	(CORD ARMOR D10.1) FOR TPE
* 9	331-810	CONTROLLER 100V-120V	1	
* 9	331-811	CONTROLLER ASS'Y 220V-240V	1	
10	325-475	MAGNET	1	
11	954-004	TAPPING SCREW D4 X 16	2	
12	331-822	MP HOLDER	1	
13	325-169	BEARING BUSHING	1	
14	325-184	RUBBER RING	1	
* 15	331-989	INTERNAL WIRE (BLUE)	1	
* 15	331-979	INTERNAL WIRE (WHITE)	1	FOR USA, CAN, MEX, PAN (120V)
16	938-307	PILLAR TERMINAL	1	
17	980-063	TERMINAL	1	
18	937-631	CORD CLIP	1	
19	984-750	TAPPING SCREW (W/FLANGE) D4 X 16	2	
* 20	953-327	CORD ARMOR D8.8	1	
* 20	938-051	CORD ARMOR D10.1	1	
21		NAME PLATE	1	
22	620-0VV	BALL BEARING 6200VVCMP2L	1	
23	938-477	HEX. SOCKET SET SCREW M5 X 8	2	
24	331-813	SWITCH HOLDER	1	
25	307-887	MACHINE SCREW (W/WASHER) M3.5 X 6	2	
* 26	331-812	SWITCH (1P SCREW TYPE)	1	
* 26	331-986	SWITCH (1P SCREW TYPE)	1	FOR GBR (110V), USA, CAN, PAN (120V)
* 27	331-820	SCALE	1	
* 27	331-821	SCALE	1	FOR GBR, USA, CAN, BRL, PAN, MEX, AUS, NZL, SAF, MAL, VIE, INA
28	945-161	BRUSH CAP	2	
29	999-038	CARBON BRUSH (1 PAIR)	2	
30	938-241	BRUSH HOLDER	2	
31		HITACHI LABEL	1	
32	331-825	LABEL	1	

PARTS

M 12VE

ITEM NO.	CODE NO.	DESCRIPTION	NO. USED	REMARKS	
	33	937-623	BRUSH TERMINAL	2	
*	34	340-659D	STATOR ASS'Y 110V-120V	1	INCLUD. 33
*	34	340-659L	STATOR ASS'Y 220V-230V	1	INCLUD. 33
*	34	340-659J	STATOR ASS'Y 220V-230V	1	INCLUD. 33 FOR BRA, PAN (220V), ISR, UAE, IND, INA, KOR, SIN, THA, PHI
*	34	340-659M	STATOR ASS'Y 240V	1	INCLUD. 33
*	34	340-659K	STATOR ASS'Y 240V	1	INCLUD. 33 FOR MAL
	35	961-400	HEX. HD. TAPPING SCREW D5 X 70	2	
	36	331-814	HOUSING ASS'Y	1	INCLUD. 23, 30
	37	325-960	LEVER	1	
	38	331-980	FAN GUIDE	1	
*	39	360-886U	ARMATURE ASS'Y 110V-120V	1	INCLUD. 21, 60
*	39	360-886E	ARMATURE 220V-240V	1	
	40	325-180	SPRING GUIDE	2	
	41	303-316	SPRING	1	
	42	307-443	MACHINE SCREW (W/WASHERS) M6 X 30 (BLACK)	2	
	43	331-819	HANDLE (A). (B) SET	2	
	44	301-806	WING BOLT M6 X 15	1	
	45	331-817	END BRACKET	1	
	46	323-426	FELT	2	
	47	317-200	MACHINE SCREW (W/WASHERS) M4 X 8 (BLACK)	1	
	48	962-569	WASHER (B)	1	
	49	971-858	SPRING (A)	1	
	50	302-196	MACHINE SCREW M5 X 20 (BLACK)	1	
	51	331-824	SCREW M8	1	
	52	302-197	MACHINE SCREW M5 X 35 (BLACK)	1	
	53	302-012	NUT M5 (BLACK)	2	
	54	331-826	STOPPER BLOCK	1	
	55	303-317	SPRING	1	
	56	971-848	LOCK PIECE	1	
	57	325-187	LOCK SCREW M10	1	
	58	323-923	LEVER (A)	1	
	59	997-314	MACHINE SCREW (W/WASHERS) M6 X 10	1	
	60	307-100	TAPPING SCREW D5 X 50	4	
	61	600-4VV	BALL BEARING 6004VVCMP2L	1	
	62	325-186	THRUST NUT	1	
	63	325-185	BEARING COVER	1	
	64	935-196	MACHINE SCREW (W/WASHERS) M4 X 12 (BLACK)	3	
	65	325-183	LOCK SPRING (A)	1	
	66	325-182	PUSHING BUTTON	1	
*	67	325-199	COLLET CHUCK 12MM	1	
*	67	323-421	COLLET CHUCK 1/2"	1	FOR GBR, USA, CAN, BRA, MEX, PAN, AUS, NZL, SAF, MAL, THA, INA
	68	331-818	BASE	1	
	69	301-810	SUB BASE	1	
	70	992-013	SEAL LOCK FLAT HD. SCREW M5 X 14	4	

STANDARD ACCESSORIES

M 12VE

ITEM NO.	CODE NO.	DESCRIPTION	NO. USED	REMARKS	
501	331-816	PARALLEL GUIDE	1		
502	301-806	WING BOLT M6 X 15	2		
503	947-859	LOCK SPRING	2		
* 504	956-756	TEMPLATE GUIDE ADAPTER	1	FOR USA, CAN, BRA, PAN, MEX	
505	956-790	TEMPLATE GUIDE D18	1		
506	323-295	WRENCH 23MM	1		
507	949-234	MACHINE SCREW M5 X 6 (10 PCS.)	2		
* 508	325-199	COLLET CHUCK 12MM	1	FOR GBR, USA, CAN,	
* 509	331-815	CASE	1	FOR USA, CAN	

OPTIONAL ACCESSORIES

ITEM NO.	CODE NO.	DESCRIPTION	NO. USED	REMARKS	
* 601	307-801	COLLET CHUCK 1/2"	1	EXCEPT FOR GBR, USA, CAN, BRA, PAN, MEX, AUS, NZL, VIE, SAF, MAL, THA	
* 602	323-293	COLLET CHUCK 1/4"	1	EXCEPT FOR GBR, USA, CAN, BRA, PAN, MEX, AUS, NZL, VIE, SAF, MAL, THA	
603	997-466	DUST COLLECTION ADAPTER SET	1		
604	956-794	TRIMMER GUIDE	1		
* 605	331-815	CASE	1	EXCEPT FOR USA, CAN	