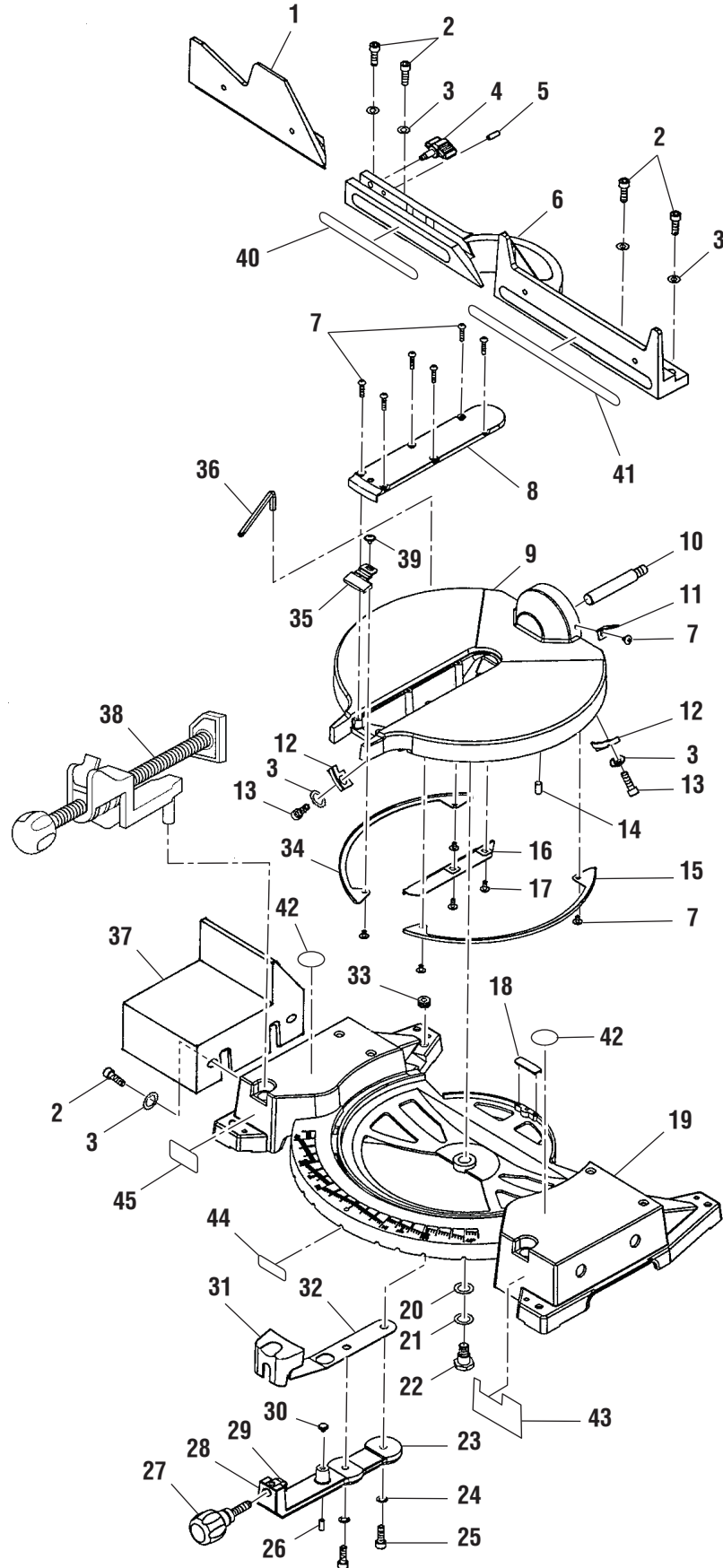


FIGURE A





The model number will be found on a plate attached to the motor housing. Always mention the model number in all correspondence regarding your **MITER SAW** or when ordering repair parts.

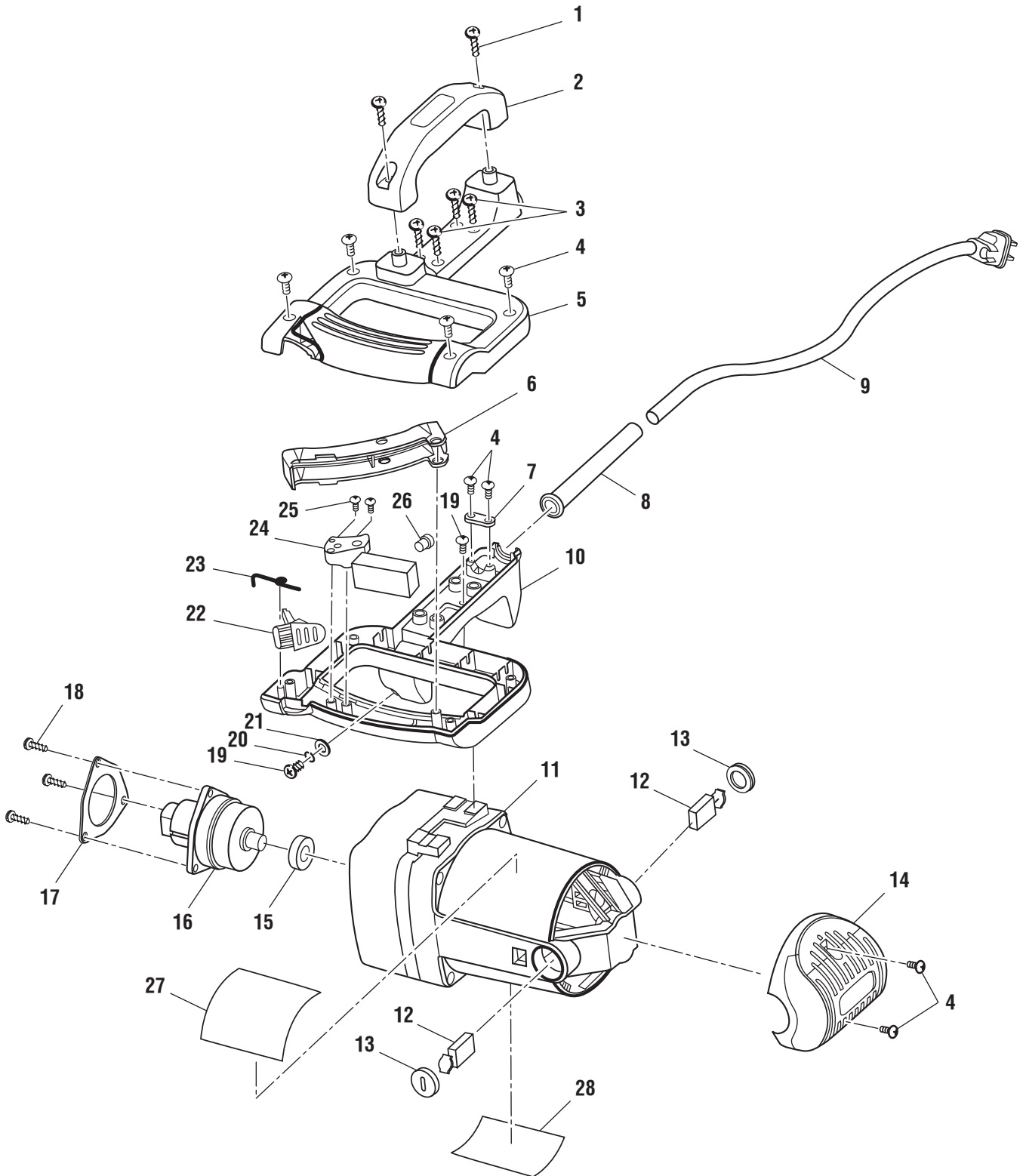
# MS1250LZA

## PARTS LIST FOR FIGURE A

Key No.	Part Number	Description	Qty.
1	828102	SLIDING FENCE.....	1
2	141594-17	SCREW (5/16-18 x 1 in. CAP SOC HD) .....	1
3	821063-6	WASHER .....	8
4	827439	FENCE KNOB .....	1
5	820244-6	SCREW M6 x 1.0 x 18 mm PAN HD) .....	1
6	828103	STATIONARY FENCE .....	1
7	816755-10	SCREW (M5 x 0.8-8 mm PAN HD).....	6
8	826886	THROAT PLATE.....	1
9	828104	TABLE.....	1
10	827434	BEVEL PIVOT SHAFT.....	1
11	827438	BEVEL INDICATOR .....	1
12	826882	BEVEL INDEX STOP .....	2
13	9421621	SCREW (5/16-18 x 5/8 in. SOC) .....	2
14	827449	SCREW (M8 x 1.25-16 mm SET SOC HD).....	1
15	823331	SHOE (LEFT) .....	1
16	827879	GUARD PLATE .....	1
17	827886	SCREW (M5-10 mm).....	1
18	823361	REAR BASE SHOE.....	1
19	828105	BASE .....	1
20	828116	SPRING WASHER.....	1
21	60047	WASHER .....	1
22	823355	TABLE PIVOT BOLT .....	1
23	828106	MITER ARM .....	1
24	140785-6	LOCKWASHER (5/16 in. INTERNAL TOOTH) .....	2
25	9421622	SCREW (5/16-18 x 3/4 in. CAP SOC HD) .....	2
26	828040-1	SCREW (M6 x 1.0-16 mm SET LOCK).....	2
27	828032	MITER KNOB .....	1
28	828031	MITER PLATE CLAMP.....	1
29	827886-1	SCREW (PAN LOCK WASHER).....	1
30	823356	FRONT BASE SHOE .....	1
31	828128	MITER INDEX GRIP.....	1
32	828029	MITER INDEX SPRING.....	1
33	823335	GROMMET .....	1
34	823332	SHOE (RIGHT).....	1
35	826885	MITER INDICATOR.....	1
36	823492	HEX KEY (1/4 in. x 120 mm).....	1
37	828109	EXTENSION TABLE .....	1
38	828048	CLAMP .....	1
39	828119-1	SCREW (M5-12 mm).....	1
40	867216001	FENCE LABEL (LEFT) .....	1
41	867216002	FENCE LABEL (RIGHT) .....	1
42	867227001	NO HANDS WARNING LABEL.....	2
43	867216029	CROWN MOLDING LABEL (RIGHT) .....	1
44	089100206900	DATA LABEL.....	1
45	867216031	CROWN MOLDING LABEL (LEFT).....	1
46	828050	HARDWARE BAG (NOT SHOWN)	

\* Standard Hardware Item – May Be Purchased Locally

FIGURE B



**⚠ WARNING:** The assembly shown represents an important part of the Double Insulated System. To avoid the possibility of alteration or damage to the System, service should be performed by your nearest authorized service center.



The model number will be found on a plate attached to the motor housing. Always mention the model number in all correspondence regarding your **MITER SAW** or when ordering repair parts.

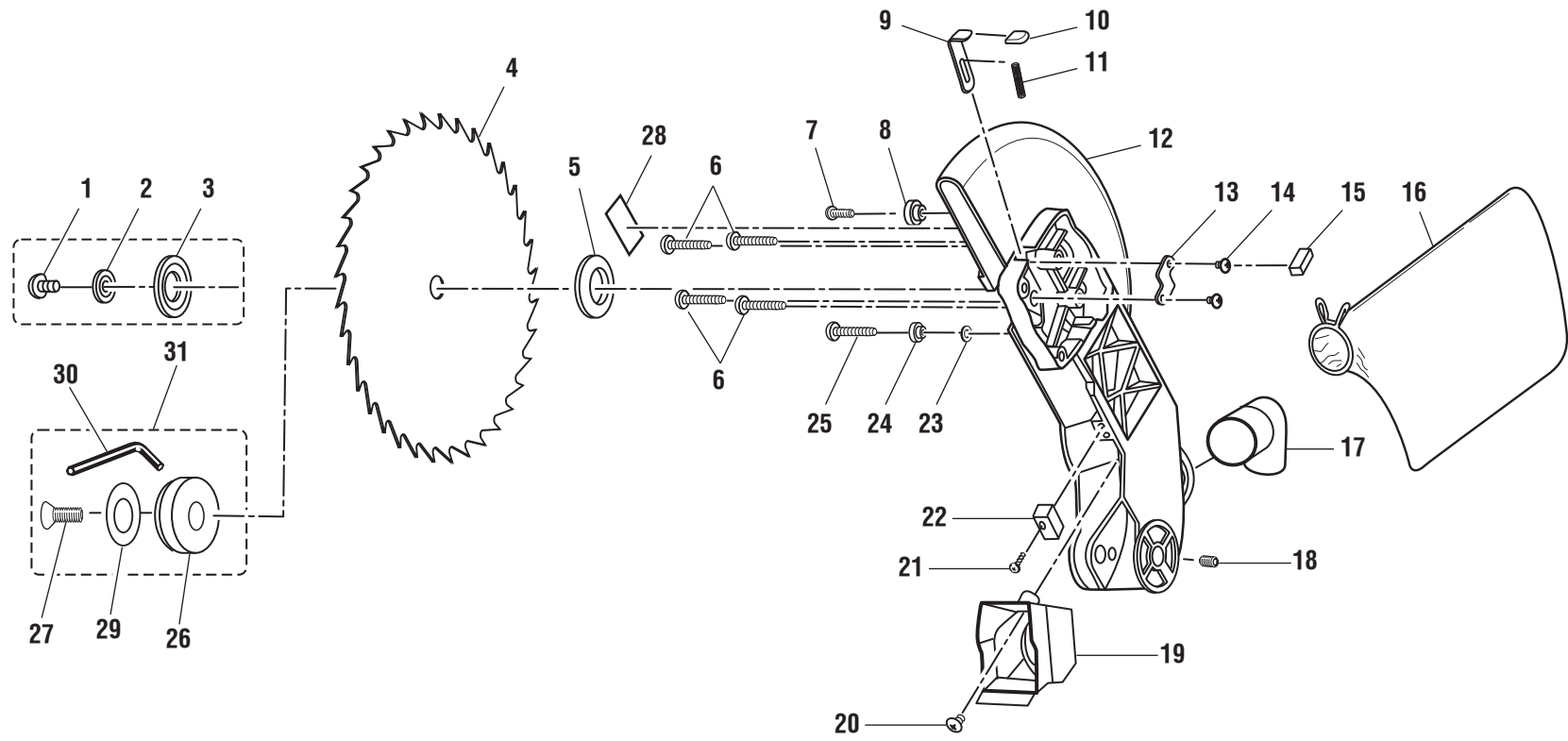
# MS1250LZA

## PARTS LIST FOR FIGURE B

Key No.	Part Number	Description	Qty.
1	828123	SCREW (M5 x 30 mm PAN HD).....	2
2	828063	CARRY HANDLE .....	1
3	820376-5	SCREW (M4 x 0.7-22 mm PAN HD) .....	4
4	828122	SCREW (M4 x 14 mm PAN HD).....	4
5	828062	HANDLE ASSEMBLY (INC. UPPER AND LOWER HANDLE) .....	1
6	828059	SWITCH ACTUATOR.....	1
7	816725	CORD CLAMP.....	1
8	821122-1	BEND RELIEF .....	1
9	828057	POWER CORD .....	1
10	828056	LOWER HANDLE.....	1
11	828125	MOTOR ASSEMBLY.....	1
12	816768	BRUSH ASSEMBLY.....	2
13	816770	BRUSH COVER.....	2
14	828064	REAR MOTOR COVER.....	1
15	816781	NEEDLE BEARING .....	1
16	089100206005	ARBOR ASSEMBLY.....	1
17	823271	BEARING RETAINER PLATE .....	1
18	816755-2	SCREW (M5 x 15 mm PAN HD).....	3
19	820376-4	SCREW (M4 x 0.7-10 mm PAN HD) .....	1
20	813303-4	LOCK WASHER (M4).....	1
21	821102	WASHER .....	1
22	828060	LOCK BUTTON .....	1
23	828061	TORSION SPRING .....	1
24	823493	SWITCH.....	1
25	828122-1	SCREW (M4 x 10 mm PAN HD).....	2
26	803709-1	WIRE CONNECTOR (#12-#18).....	2
27	867216028	WARNING LABEL (ENGLISH/SPANISH) .....	1
28	867216030	WARNING LABEL (FRENCH) .....	1

\* Standard Hardware Item – May Be Purchased Locally

FIGURE C





## MS1250LZA

The model number will be found on a plate attached to the motor housing. Always mention the model number in all correspondence regarding your **MITER SAW** or when ordering repair parts.

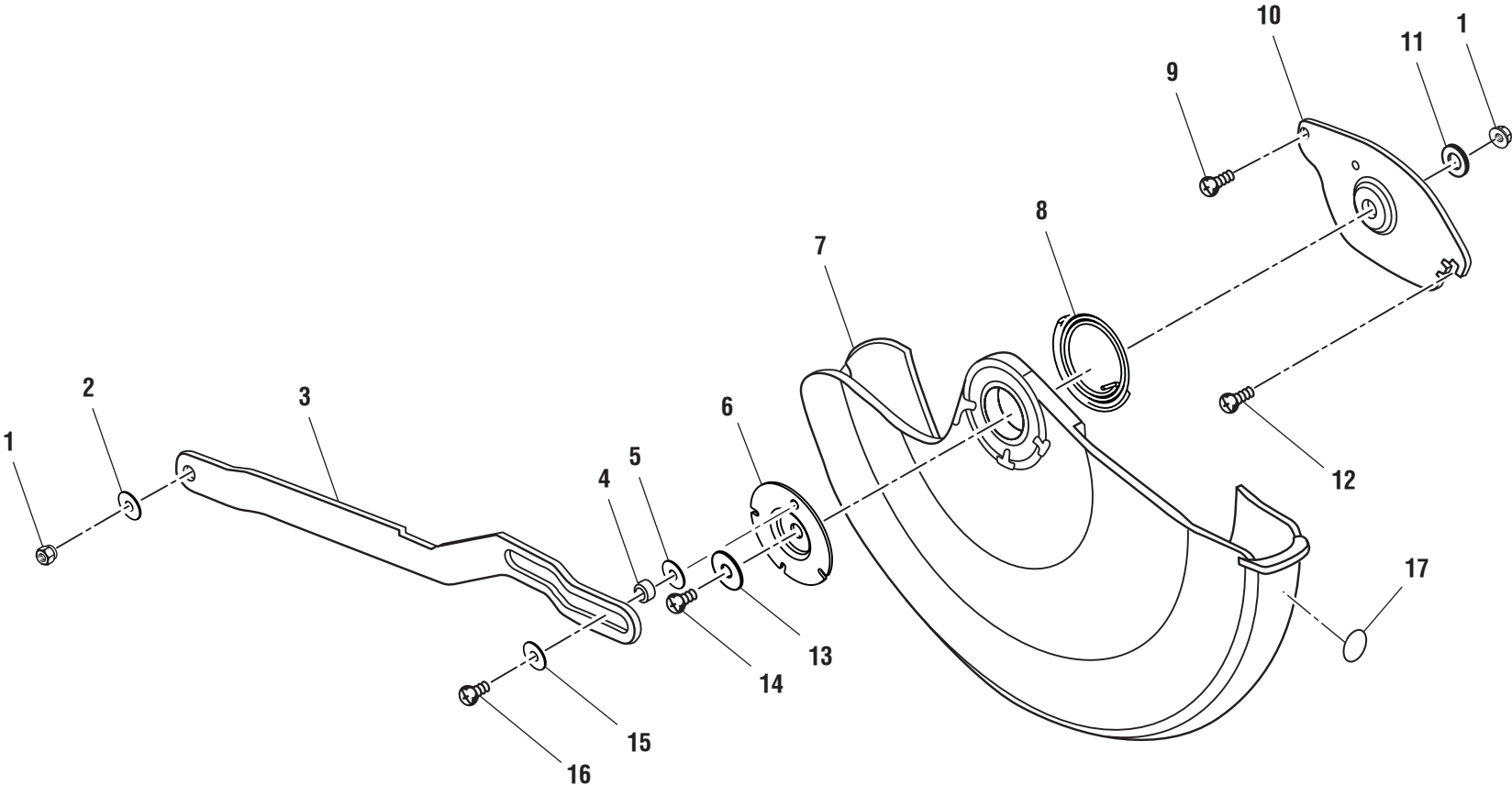
### PARTS LIST FOR FIGURE C

Key No.	Part Number	Description	Qty.
1	089100206003	BLADE SCREW (M10 x 28.5 mm) .....	1
2	830523	BLADE WASHER .....	1
3	089100300052	BLADE COLLAR (OUTER) .....	1
4	828042	BLADE .....	1
5	830526	BLADE COLLAR (INNER) .....	1
6	827886-2	SCREW W/ WASHER (M8-35, PAN HD).....	4
7	821878	SCREW (10-32 x 7/8 in., SHOULDER) .....	1
8	827498	RUBBER SLEEVE .....	1
9	827512	ARBOR LOCK.....	1
10	827516	GRIP CAP .....	1
11	823402	SPRING .....	1
12	830531	UPPER ARM GUARD .....	1
13	823353	ARBOR LOCK PLATE .....	1
14	823404	SCREW (M5 x 0.8-8 mm) .....	2
15	823359	ARBOR LOCK GROMMET .....	1
16	828045	DUST BAG.....	1
17	828038	ELBOW .....	1
18	828040-1	SCREW (M6 x 1.0-16 mm, SET LOCK) .....	1
19	827543	SAWDUST CHUTE .....	1
20	828119	SCREW (M5 x 0.8-25 mm) .....	1
21	816755-6	SCREW (M5 x 0.8-16 mm, PAN HD) .....	1
22	823360	LOWER GUARD BUMPER .....	1
23	820238-2	WASHER.....	1
24	821862	BEARING GUIDE .....	1
25	821875-1	SCREW (M6 x 14 mm SHOULDER) .....	1
26	089100300724	LASER .....	1
27	089100206004	ADJUSTABLE LASER BOLT (M10 x 35.5 mm).....	1
28	867216027	WARNING LABEL (UPPER GUARD) .....	1
29	089100300727	WARNING LABEL.....	1
30	089100300726	1/16 in. HEX KEY.....	1
31	089100303002	ADJUSTABLE LASER KIT (INC. KEY NOS. 26-27 AND 29-30).....	1

**RIDGID**

**MS1250LZA**

**FIGURE D**





## MS1250LZA

The model number will be found on a plate attached to the motor housing. Always mention the model number in all correspondence regarding your **MITER SAW** or when ordering repair parts.

### PARTS LIST FOR FIGURE D

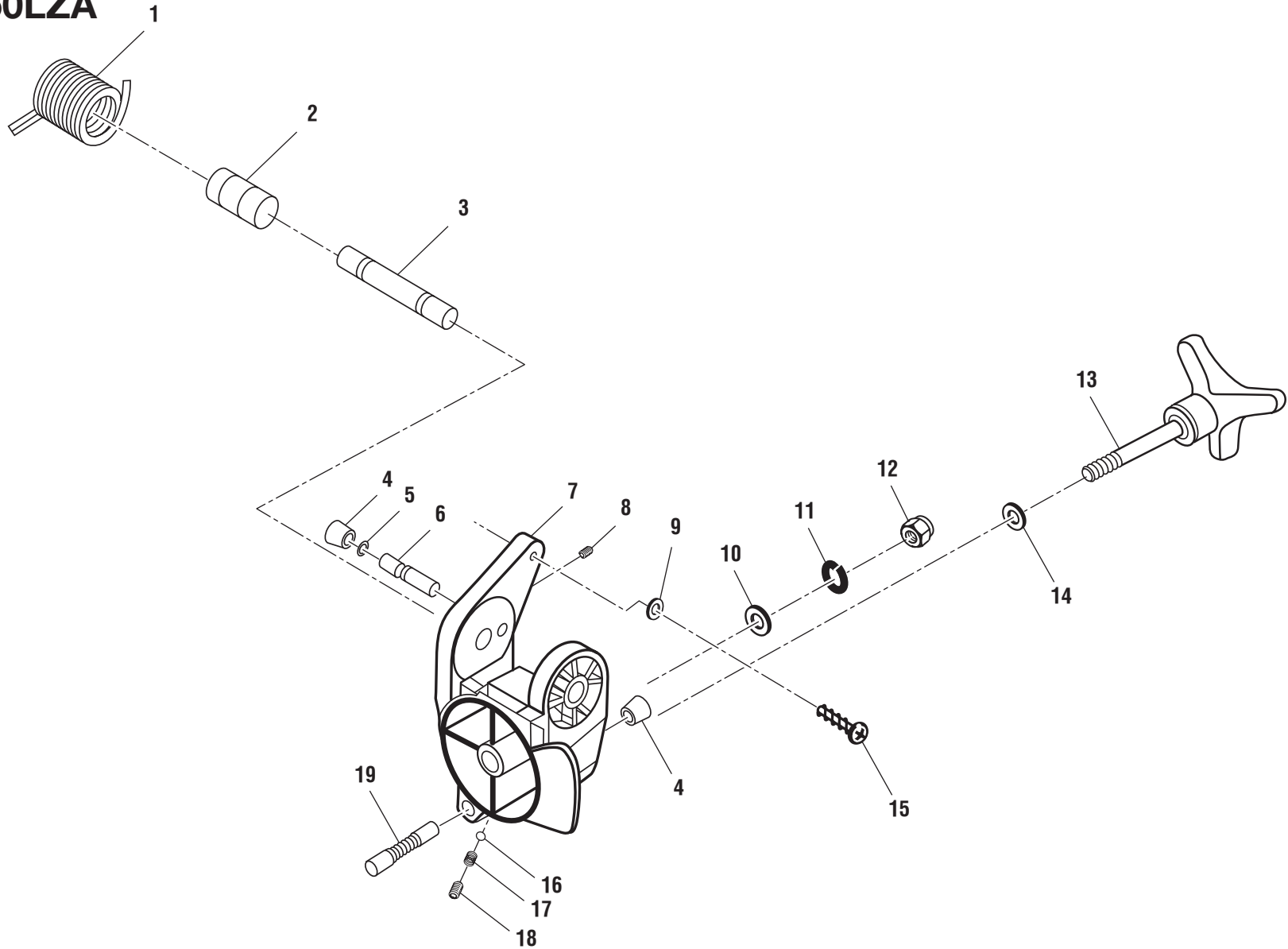
Key No.	Part Number	Description	Qty.
1	817449-1	LOCK NUT (M6 x 1.0 mm).....	2
2	820238-5	WASHER.....	1
3	823340-1	ACTUATOR LINK.....	1
4	820725-01	SPACER (7 x 10 x 4).....	1
5	820732-2	WASHER.....	1
6	826879	GUARD RETAINER.....	1
7	830530	LOWER GUARD.....	1
8	816677	GUARD SPRING.....	1
9	821873	SCREW (10-32 x .50, SHOULDER).....	1
10	830529	LOWER GUARD PIVOT.....	1
11	828141	WASHER.....	1
12	020123008	SCREW (10-32 x 1/2 in., PAN HD).....	1
13	827409	BEARING RETAINER.....	1
14	828142	SCREW (M6 x 1.0-13 mm, FLAT HD).....	1
15	820732-1	WASHER.....	1
16	820724-01	SCREW (M5 x 0.8-16 mm, SHOULDER).....	1
17	867227001	NO HANDS WARNING LABEL.....	1



# RIDGID<sup>®</sup>

## MS1250LZA

### FIGURE E





## MS1250LZA

The model number will be found on a plate attached to the motor housing. Always mention the model number in all correspondence regarding your **MITER SAW** or when ordering repair parts.

### PARTS LIST FOR FIGURE E

Key No.	Part Number	Description	Qty.
1	828066	TORSION SPRING .....	1
2	823320	TORSION SPRING SPACER .....	1
3	823344	PIVOT SHAFT ARM .....	1
4	828034	RUBBER CAP .....	1
5	821421-2	O-RING .....	1
6	828035	LOCKING PIN .....	1
7	828107-1	PIVOT .....	1
8	828120	SCREW (M4 x 0.7-5 mm, SET LOCK) .....	1
9	821063-1	WASHER .....	1
10	828117	WASHER .....	1
11	819179	WASHER SPRING .....	1
12	818656	LOCK NUT (M12) .....	1
13	827488	BEVEL KNOB .....	1
14	828170	WASHER .....	1
15	821875-4	SHOULDER SCREW (M6 x 23 mm) .....	1
16	823742-2	BALL (5 mm) .....	1
17	828039	SPRING .....	1
18	828040	SCREW (M6 x 1.0-10 mm, SET LOCK) .....	1
19	828041-1	BEVEL INDEX PIN .....	1
20	089100300728	INSTRUCTION SHEET (NOT SHOWN) .....	1
21	089100300729	CARD (NOT SHOWN) .....	1
	987000016	OPERATOR'S MANUAL	
	6-22-09		
	(REV:03)		